

Shape GP

FEATURES

- Ergonomically contoured
- High-density base foam
- Four-way stretch cover overlaps back pan
- Streamlined, two-point mounting hardware
- Quick-release locking hardware
- Accommodates an array of headrests and accessories

SPECIFICATIONS

Weight Capacity: 136 kg (300 lbs.)

Widths: 35.5 cm, 41 cm, 46 cm, 51 cm and 56 cm (14", 16", 18", 20" and 22")

Height: 48 cm (19")

BENEFITS

- Helps promote good posture
- Offers conforming comfort without allowing bottom out
- Prevents back cushion from shifting position
- Allows for fast installation and easy depth and angle adjustment, even while occupied
- Allows the client to maintain an independent, active lifestyle
- Able to meet the needs of a wide range of clients

Adjustability: Angle adjustment of 10° to -10°

5 cm (2") of width adjustment

5 cm (2") of depth adjustment

Height adjustable

Shape

FEATURES

- Ergonomically contoured
- High-density base foam with a soft viscoelastic upper layer
- Four-way stretch cover overlaps back pan
- Streamlined, two-point mounting hardware
- Quick-release levers
- Four-point, bolt-on hardware for use with TRU-Balance® Power Positioning or Synergy® Seat Frame Systems
- Available in standard, low and tall back heights
- Accommodates an array of headrests and accessories

SPECIFICATIONS

Weight Capacity: 136 kg (300 lbs.)

Widths: 35.5 cm, 41 cm, 46 cm, 51 cm and 56 cm (14", 16", 18", 20" and 22")

Height: 41 cm, 48 cm and 58 cm (16", 19" and 23")

BENEFITS

- Helps promote good posture
- Offers conforming comfort without allowing bottom out
- Prevents back cushion from shifting position
- Allows for fast installation and easy depth and angle adjustment, even while occupied
- Allows the client to maintain an independent, active lifestyle
- Provides easy, solid attachment to back canes
- Provides support for a wide range of body types
- Able to meet the needs of a wide range of clients

Adjustability: Angle adjustment of 10° to -10°

5 cm (2") of width adjustment

5 cm (2") of depth adjustment

Height adjustable

Shape Deep Contour

FEATURES

- Ergonomically contoured
- High-density base foam with a soft viscoelastic upper layer
- Four-way stretch cover overlaps back pan
- Fully adjustable, 18 cm (7") (height) x 15 cm (6") (depth), gel-covered thoracic lateral supports
- Streamlined, two-point mounting hardware
- Quick-release levers
- Four-point, bolt-on hardware for use with TRU-Balance® Power Positioning or Synergy® Seat Frame Systems
- Available in standard and tall back heights
- Accommodates an array of headrests and accessories

SPECIFICATIONS

Weight Capacity: 136 kg (300 lbs.)

Widths: 35.5 cm, 41 cm, 46 cm, 51 cm and 56 cm (14", 16", 18", 20" and 22")

Heights: 38 cm (15") (only on 35.5 cm (14") width), 48 cm (19") and 58 cm (23")

BENEFITS

- Helps promote good posture
- Offers conforming comfort without allowing bottom out
- Prevents back cushion from shifting position
- Provides exceptional lateral support and comfort
- Allows for fast installation and easy depth and angle adjustment, even while occupied
- Allows the client to maintain an independent, active lifestyle
- Provides easy, solid attachment to back canes
- Provides support for a wide range of body types
- Able to meet the needs of a wide range of clients

Adjustability: Angle adjustment of 57° to -33°

5 cm (2") of width adjustment

5 cm (2") of depth adjustment

Height adjustable



SYNERGY

cushions and backs

economically sound • patient first

QUANTUM
LIFE BEYOND LIMITS™

20-24 Apollo Drive Hallam, Victoria 3803
ACN 088 609 661 ABN 66 088 609 661
(Tel) 03 8770 9600 • (Fax) 03 9703 2720
www.pridemobility.com.au

Quality System
Quality Endorsed Company
ISO 9001 OEC20029
SAI Global

www.quantumrehab.com.au

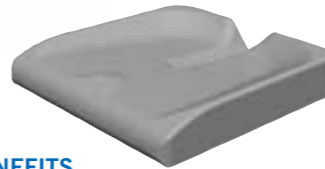
SYNERGY

cushions and backs

The Most Complete Selection of Solutions for the Broadest Range of Needs

Synergy® Cushions and Backs from Quantum Rehab® offer an excellent selection of pressure management and positioning solutions available in a range of sizes that accommodate paediatric to bariatric patients. Each Synergy cushion uses unique components to deliver specialised pressure management and maximise comfort.

Simplicity®



FEATURES

- Deep contoured, high-density moulded foam base
- Coccyx and sacral relief
- Moisture wicking four-way stretch incontinence cover

BENEFITS

- Provides lateral support for clients in need of mild positioning
- Designed for clients who have mild skin protection needs
- Reduces moisture build-up



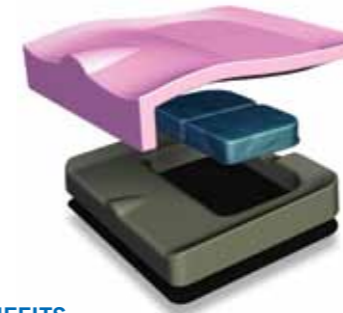
SPECIFICATIONS

Weight Capacity: 159 kg (350 lbs.)

Sizes: 41 cm x 41 cm - 61 cm x 61 cm (16" x 16" - 24" x 24") *

Overall Height: 5 cm (2")

Spectrum® Gel



FEATURES

- Lateral and pre-ischial shelf contoured into high-density moulded foam base
- Twin-cell, lightweight fluid insert under at-risk bony areas
- Moisture wicking four-way stretch cover
- Inner liner for incontinence and to reduce shear
- Viscoelastic total top layer
- Solid seat insert included

BENEFITS

- Provides lateral and anti-thrust support for clients in need of moderate positioning
- Provides excellent stability
- Designed for clients who need moderate to high skin protection
- Reduces shear and moisture build-up
- Promotes better circulation

AVAILABLE IN PAEDIATRIC SIZES



SPECIFICATIONS

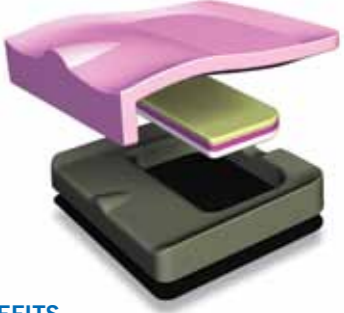
Weight Capacity: 159 kg (350 lbs.)

Sizes:

Paediatric: 30.5 cm x 25 cm - 35.5 cm x 35.5 cm (12" x 10" - 14" x 14") *
Standard: 35.5 cm x 41 cm - 61 cm x 61 cm (14" x 16" - 24" x 24") *

Overall Height: 7.6 cm (3")

Spectrum® Foam



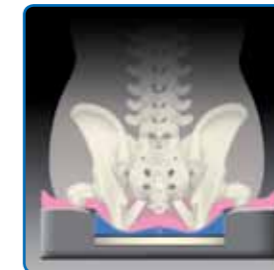
FEATURES

- Lateral and pre-ischial shelf contoured into high-density moulded foam base
- Multi-layer, viscoelastic foam insert under at-risk bony areas
- Moisture wicking four-way stretch cover
- Inner liner for incontinence and to reduce shear
- Viscoelastic total top layer
- Solid seat insert included

BENEFITS

- Provides lateral and anti-thrust support for clients in need of moderate positioning
- Provides excellent stability
- Designed for clients who need moderate to high skin protection
- Reduces shear and moisture build-up
- Promotes better circulation

AVAILABLE IN PAEDIATRIC AND BARIATRIC SIZES



SPECIFICATIONS

Weight Capacity: 295 kg (650 lbs.)

Sizes:

Paediatric: 25 cm x 25 cm - 35.5 cm x 35.5 cm (10" x 10" - 14" x 14") *
Standard: 35.5 cm x 41 cm - 61 cm x 61 cm (14" x 16" - 24" x 24") *
Bariatric: 66 cm x 46 cm - 81 cm x 71 cm (26" x 18" - 32" x 28") *

Overall Height: 7.6 cm (3")

Solution®



FEATURES

- Lateral and pre-ischial shelf contoured into high-density moulded foam base
- Twin-cell, aqueous gel insert under at-risk bony areas
- Moisture wicking four-way stretch cover
- Inner liner for incontinence and to reduce shear
- Viscoelastic total top layer

BENEFITS

- Provides lateral and anti-thrust support for clients in need of moderate positioning
- Designed for clients who need mild to moderate skin protection
- Reduces shear and moisture build-up
- Promotes better circulation

AVAILABLE IN PAEDIATRIC SIZES



SPECIFICATIONS

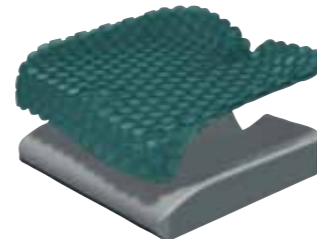
Weight Capacity: 159 kg (350 lbs.)

Sizes:

Paediatric: 25 cm x 25 cm - 35.5 cm x 35.5 cm (10" x 10" - 14" x 14") *
Standard: 35.5 cm x 41 cm - 61 cm x 61 cm (14" x 16" - 24" x 24") *

Overall Height: 9 cm (3.5")

Solution® 1



FEATURES

- Deep contoured, high-density moulded foam base
- Coccyx and sacral relief
- Silicone soft gel top layer with airflow design
- Moisture wicking four-way stretch incontinence cover

BENEFITS

- Provides lateral support for clients in need of moderate positioning
- Designed for clients who need mild to moderate skin protection
- Reduces shear, moisture build-up and heat build-up
- Promotes better circulation



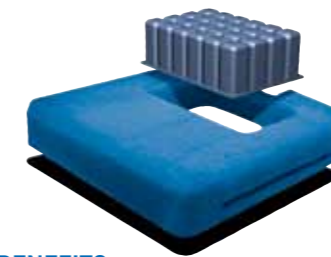
SPECIFICATIONS

Weight Capacity: 159 kg (350 lbs.)

Sizes: 35.5 cm x 35.5 cm - 61 cm x 61 cm (14" x 14" - 24" x 24") *

Overall Height: 6.35 cm (2.5")

Spectrum® Air



FEATURES

- Multi-cell air bladder
- Unique airflow properties of the Sil-Air silicone foam base helps keep skin cool and dry
- Pre-ischial shelf contoured into Sil-Air silicone foam base
- Waterproof, antibacterial Sil-Air base
- Precision air volume adjustment
- Compact hand pump fits in integrated carrying pouch
- Solid seat insert included

BENEFITS

- Provides excellent stability and support
- Designed for clients who need moderate to high skin protection
- Provides anti-thrust support for clients in need of mild to moderate positioning
- Greatly reduces bacteria and odour
- Prevents bottom out or high pressure from overinflation
- Convenient on-the-go air pressure adjustment



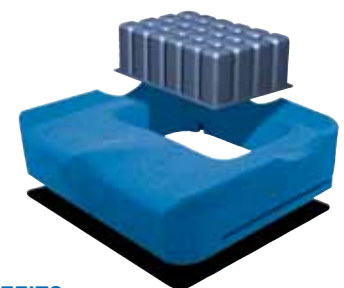
SPECIFICATIONS

Weight Capacity: 159 kg (350 lbs.)

Sizes: 35.5 cm x 30.5 cm - 61 cm x 61 cm (14" x 12" - 24" x 24") *

Overall Height: 9 cm (3.5")

Spectrum® Air [Contour]



FEATURES

- Multi-cell air bladder
- Unique airflow properties of the Sil-Air silicone foam base helps keep skin cool and dry
- Lateral and pre-ischial shelf contoured into Sil-Air silicone foam base
- Waterproof, antibacterial Sil-Air base
- Precision air volume adjustment
- Compact hand pump fits in integrated carrying pouch
- Solid seat insert included

BENEFITS

- Provides excellent stability and support
- Designed for clients who need moderate to high skin protection
- Provides lateral and anti-thrust support for clients in need of moderate positioning
- Greatly reduces bacteria and odour
- Prevents bottom out or high pressure from overinflation
- Convenient on-the-go air pressure adjustment



SPECIFICATIONS

Weight Capacity: 159 kg (350 lbs.)

Sizes: 35.5 cm x 30.5 cm - 61 cm x 61 cm (14" x 12" - 24" x 24") *

Overall Height: 9 cm (3.5")

* Custom sizes available