

Q-Controls™ Management Software

USER MANUAL

ACN# 088 609 661



QUANTUM
REHAB
MOVING AT THE SPEED OF LIFE™

www.quantumrehab.com
www.prideservice.com
www.pridemobility.com
www.prideprovider.com

I. INTRODUCTION 4
 About Q-Controls Management Software 4
 System Requirements 4

II. GETTING STARTED 5
 Installing the Software 5
 Running the Software 5
 Upgrading to a Newer Version 5

III. BASIC PROGRAMMING 5
 Creating a New Customer Account 5
 Locating a Customer Account 6
 Editing a Customer Account 6
 Deleting a Customer Account 6
 Setting Up the Main Menu 7
 Uploading the Configuration 9
 Exporting/Importing Customer Data 10

IV. INTERMEDIATE PROGRAMMING 10
 Editing Screen Layouts 10
 Changing Devices 11
 Using Macros 11

V. ADVANCED PROGRAMMING 12
 Deleting Screens 12
 Creating a User Phone Book 13
 Editing a User Phone Book 13
 Customizing Switch Settings/Scan Speeds 13
 Synchronizing Files Across a Network 14
 Editing IR Codes 15
 Changing Screen and Icon Parameters 16

VI. APPENDIX A — Screen List 17

VII. APPENDIX B — Available Icons 18

VIII. APPENDIX C — Upload Menu Commands 19

IX. APPENDIX D — Other Settings 20

X. APPENDIX E — Method Lists 21

I. INTRODUCTION

About Q-Controls Management Software

The Q-Controls Management Software, when used with the Q-Controls environmental control system, uses SRS technology to allow you to customize and program the Q-Controls unit to suit the user's unique environment, equipment, and physical abilities. With the Q-Controls Management Software, you can:

- Create and edit customer information
- Customize the Q-Controls unit's main menu screen with icons to:
 - Operate Q-Controls Link Modules
 - Control home entertainment devices
 - Link to other menu screens
- Customize the speed of the Q-Controls' response to user input
- Create an electronic phone book for the user
- Test the Q-Controls' configuration
- Upload information to the Q-Controls unit

To enable you to operate the Q-Controls Management Software with ease, the software is set up like a Windows application. Nearly every action produces pop-up windows with **Yes** or **No** buttons to confirm your selection. These pop-ups **will not** be referenced in the instructional steps. Always choose **Yes** on a pop-up window unless otherwise instructed or if you think you made a mistake in your selection.

Information can be saved from the **File** menu or occasionally by **Save** buttons on the page. *Always save your changes before moving on to the next application.* If you have any questions about the software, this manual, or Q-Controls, please call Q-Controls Technical Service at 800-893-7230.

Figure 1 will familiarize you with general computer terminology and the Q-Controls Management Software features.

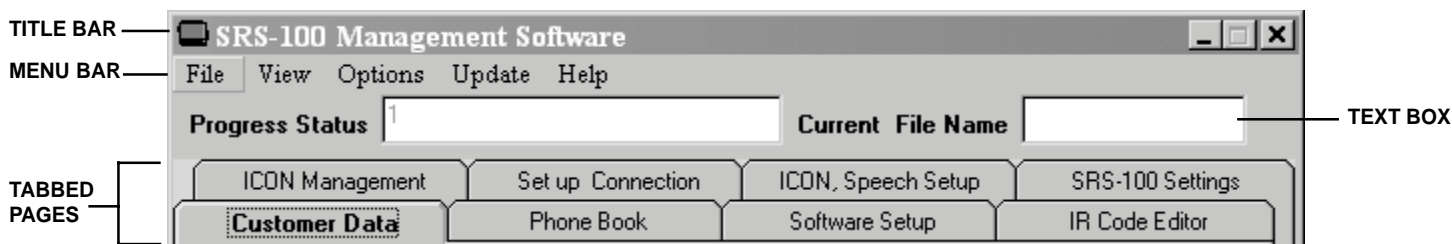


Figure 1. Management Software Features

System Requirements

Before installing the Q-Controls Management Software to your computer, please note the minimum requirements for properly running the software:

- Minimum processor speed: 133MHz
- Operating systems: Windows 95, 98, Me, NT, 2000, or XP
- A multi-read CD ROM drive (minimum 4x speed)
- An available serial COM port, preferably COM1
- At least 64Mb available RAM
- At least 40Mb of free hard drive space
- At least 800x600 display with minimum 256 colors

II. GETTING STARTED

Installing the Software

1. Place the Q-Controls Management Software CD into your CD-ROM drive.
2. If the CD does not automatically run, click on the Windows Start button and select Run. Browse to your CD-ROM drive and select Setup.exe. Click on the OK button.
3. Follow the on-screen instructions as directed by the installation Wizard.

Running the Software

- Double click on the SRS-100 Management Software icon on your desktop,
OR
- Click on the Windows Start button and select Programs, then SRS-100 Management Software.

Upgrading to a Newer Version

If you are upgrading to a newer version of the Q-Controls Management Software, make sure that your customer database is secure by performing the following:

1. Locate your customer database file in the folder C:\Program Files\SRS\SRS100\Customer Data.mdb.
2. Rename the file Old Customer Data.mdb.
3. Install the new software as explained above in “Installing the Software.”
4. Delete the new Customer Data.mdb file that installation created.
5. Change the name of your previous customer database file back to Customer Data.mdb.
6. Run the software as usual. The new features will be available without having disrupted your previous customer files.

III. BASIC PROGRAMMING

This section will explain how to perform the most common tasks with the Q-Controls Management Software including:

- Creating, locating, editing, and deleting customer accounts
- Setting up the Main Menu and adding screens to the Q-Controls configuration
- Uploading data to a Q-Controls unit
- Exporting/Importing Customer Data

Creating a New Customer Account

1. From the Customer Data page, click on the Add New Customer button. See figure 2.
2. Enter the user's information in the text boxes, using the Tab key or mouse to move between boxes. The Reference box must contain the serial number of the user's Q-Controls unit exactly as it appears on the unit. The Fax/Robox text box must read **570-300-4022**.
3. In the menu bar, click File then Save.
4. Click on the ICON Management tab.
5. Export the data to Q-Controls. See “Exporting/Importing Customer Data.”

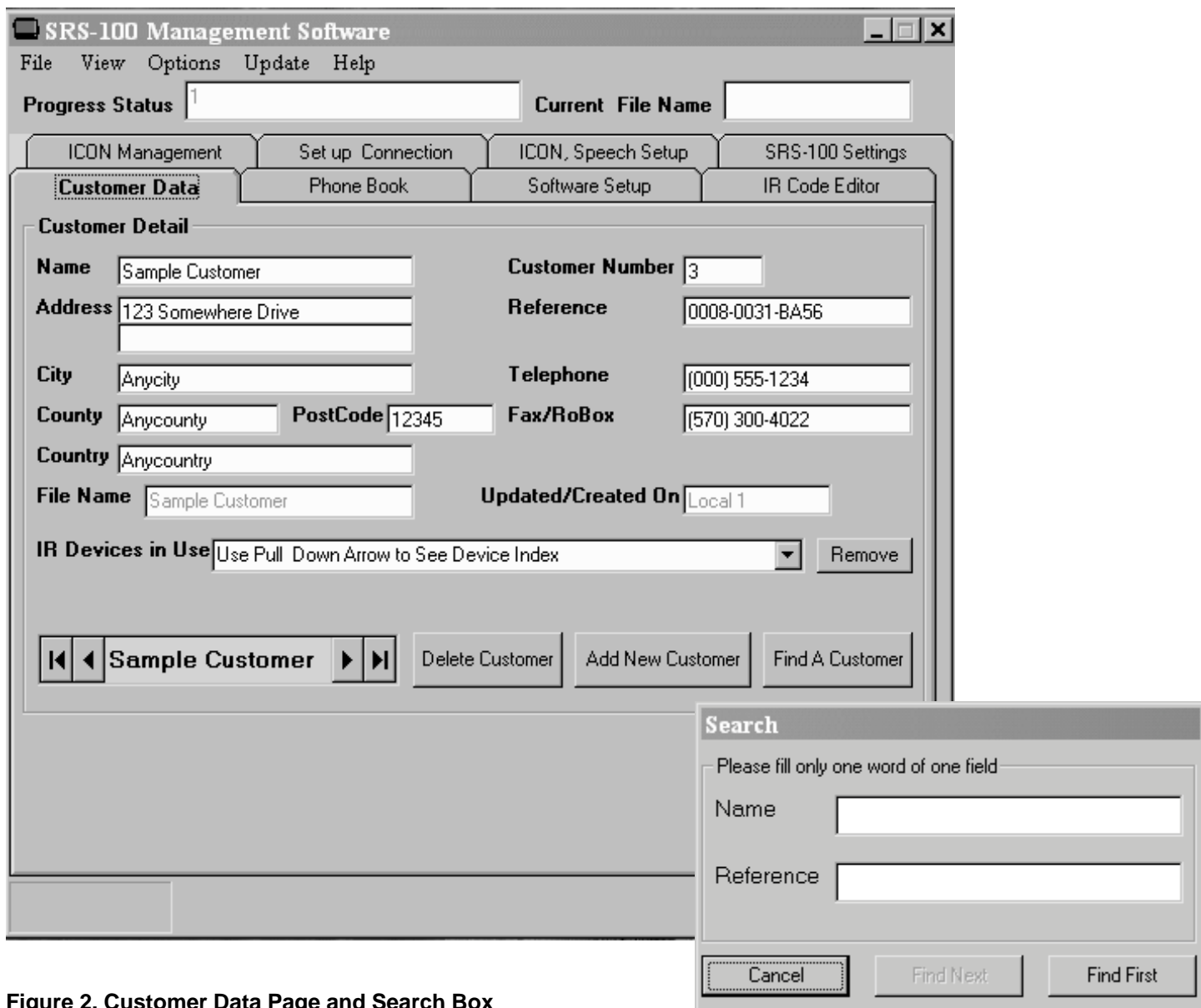


Figure 2. Customer Data Page and Search Box

Locating a Customer Account

- From the Customer Data page, click on the arrows next to the orange box to scroll through the user database
OR
- Click on the Find A Customer button. The Search window is displayed. See figure 2. Enter the first few letters of a customer's name or reference number in the appropriate text box. Click on the Find First button. Click on the Cancel button to work on the displayed customer or click on the Find Next button to view more related search results.

Editing a Customer Account

1. Locate the customer account.
2. Edit the information in the text boxes as desired.
3. Save changes.

Deleting a Customer Account

1. Locate the customer account as described above in "Locating a Customer Account."
2. Click on the Delete Customer button.

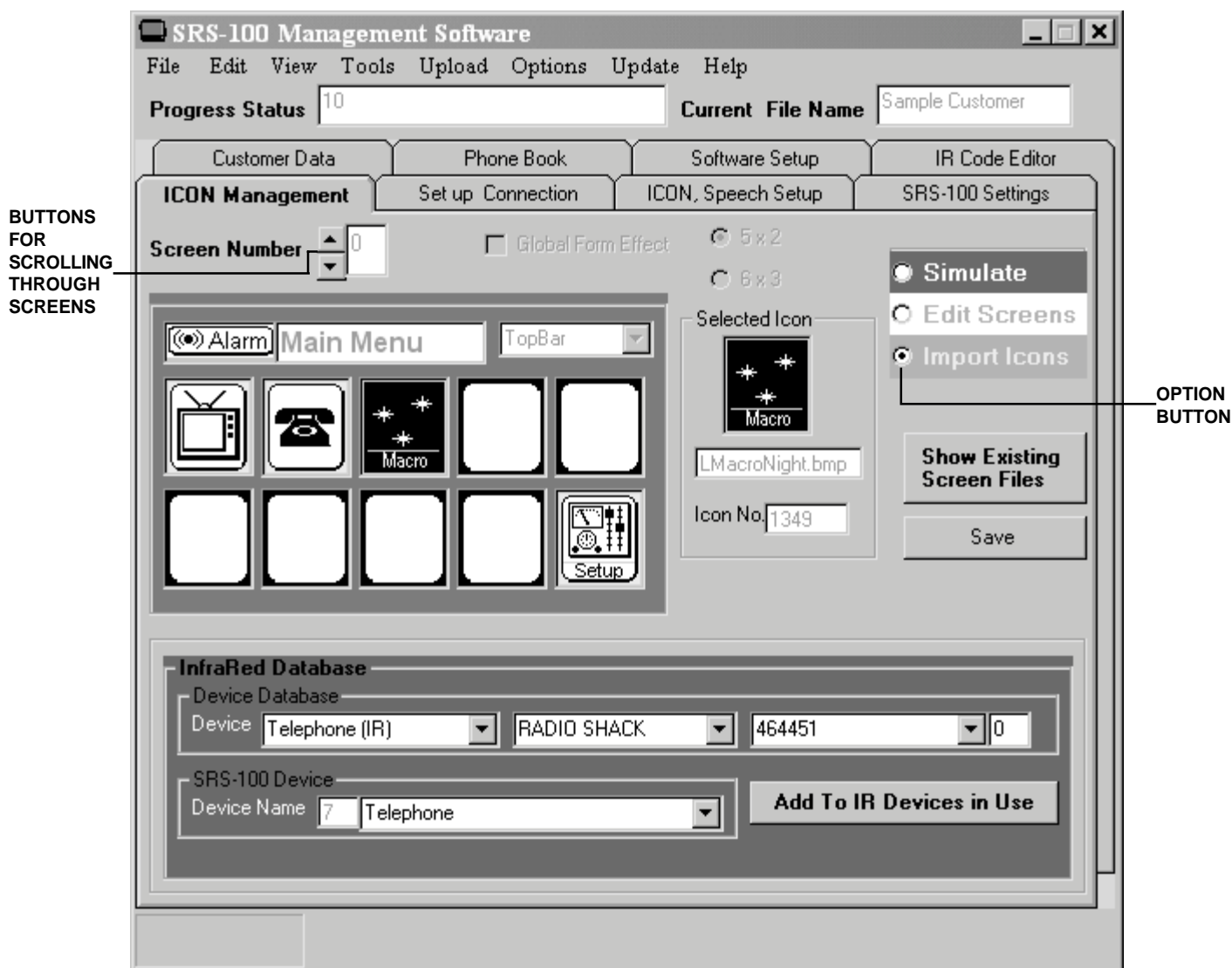


Figure 3. ICON Management Page with InfraRed Database Box

Setting Up the Main Menu

When you add a new customer, the management software sets up a default configuration for the user's Q-Controls. Each screen is numbered and contains blank icons for the most common functions. See Appendix A for a list of screens. The Main Menu, however, will need to be customized by you. See figure 3.

To set up the main menu:

1. From the ICON Management page, click on the Import Icons option button. The Available Icons window is displayed. See figure 4.
2. Click on View in the menu bar and choose which group of icons you wish to pick from. See Appendix B for a list.

The Main Menu can be populated with:

- Icons for the user's infrared (IR)-controlled devices (such as TV, VCR, etc.)
- Icons for the user's radio frequency (RF)-controlled devices (such as Q-Controls Link Modules)
- Icons that link to other screens (for more options)

3. Test the screen linkages and icon functions by selecting the Simulate option button on the ICON Management page and clicking on the icon from the Main Menu that you wish to test. If it is functioning properly, this action will either take you to an additional menu screen or transmission information will appear in a Simulation Information box on the bottom of the page.
4. Save your changes.

Adding Icons for an IR Device

1. Click on the desired icon (usually found in the Link to Icons list).
2. Click on the blank screen block where you want the icon to go.
3. Select from the following choices as prompted in the InfraRed Database box:
 - **Device** Check that the displayed device type is correct.
 - **Manufacturer** Choose from the database's list of manufacturers.
 - **Model Number** Choose from the models available from the chosen manufacturer. If your target device is not shown in the lists, contact Q-Controls for an updated list.
4. Repeat as necessary until all the desired icons are placed.

Adding Icons for an RF Device

1. Click on the desired icon (usually found in the SRS Devices list)



Note: Icons in the Toggle/On/Off list enable you to switch the RF device on and off using the same icon. If you choose an icon from the Normal Operation list to switch on an RF Device, you will need to add another icon from the list to turn the device off.

2. Click on the blank screen block where you want the icon to go. The management software will automatically load the information required to operate the device.
3. Repeat as necessary until all the desired icons are in place.

Extending Screens

The default configuration contains three blank screens—Custom 1, Custom 2, and Custom 3—that you can use to extend existing screens, compose screens for different rooms, or create macros. If you still need more screens, you can create them in the section named “Inserting Screens.”

1. From the ICON Management page, click the Simulate option button.
2. Using the arrow buttons, navigate through the screens to the one that you wish to extend.
3. Select the Import Icons option button. The Available Icons window is displayed.
4. In the menu bar, choose View then Link To Icons then Other Screens.
5. Click on the More>> icon.
6. Click on a blank space on the screen graphic. You will be prompted to select a target screen in the lower half of the ICON Management page.
7. Choose the destination screen for the link, for example, Custom1.
8. Test the screen (see step 3 under “Setting up the Main Menu”).



Figure 4. Available Icons Window

Inserting Screens

1. From the ICON Management page, select **Tools** then **Screens** then **Insert Screen**. See figure 5.
2. Click on **Yes** for a 6x3 format (medium icons) or **No** for the standard, 5x2 format (large icons). The management software adds the new screen to the end of the customer's screens file.

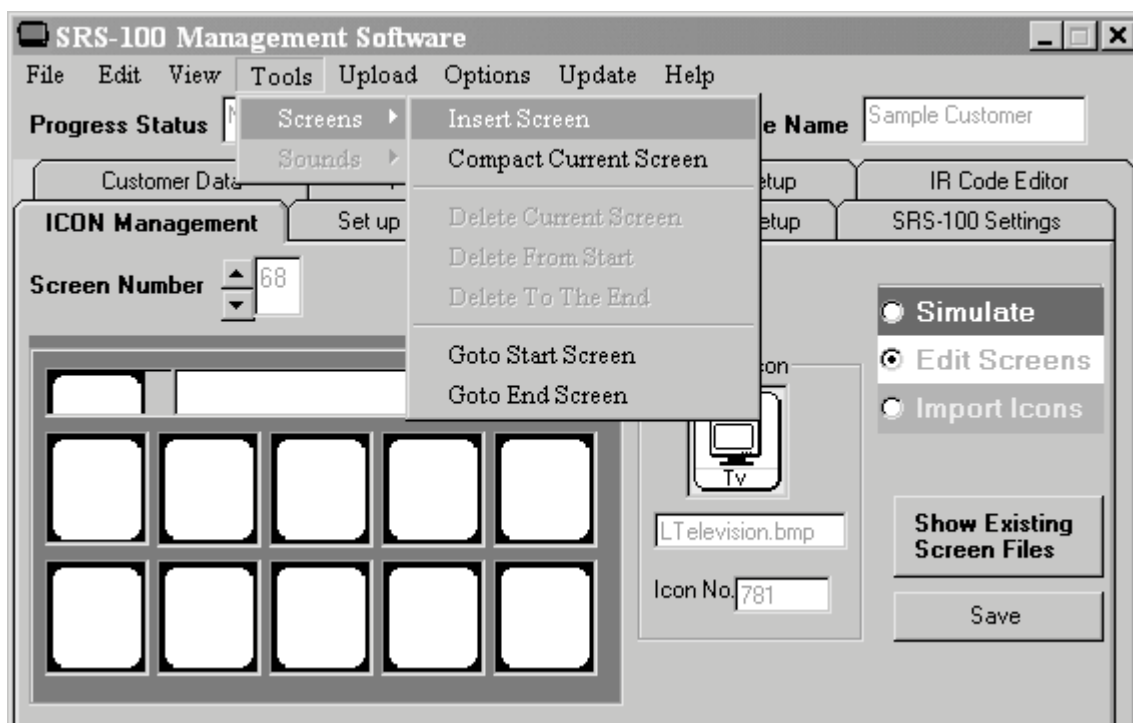


Figure 5. Inserting Blank Screens

Changing Screen Links

1. On the ICON Management page, click on the Edit Screens options button.
2. Navigate through the screens and click on the icon you want to edit. The selected icon is displayed in the Selected Icon window and its current link is shown in the second Action box.
3. Click on the arrow next to the second Action box for a list of available screens.
4. Choose the destination screen for the link.
5. Test the new screen (see step 3 of “Setting up the Main Menu”).

Uploading the Configuration

Configuration changes to a Q-Controls unit can be uploaded at any time via two methods:

- Directly, using a serial uplink cable

OR

- Remotely, at Q-Controls.



NOTE: During uploading, an icon may be excluded from the controller configuration if the infrared function behind it is not supported by the device.

Direct Uploading

1. Connect the serial link cable to the Q-Controls unit.



NOTE: It is important that the process is completed without any interruptions. Ensure that the Q-Controls unit is not in sleep mode when starting upload.

2. From the ICON Management page, click on Upload in the menu bar.
3. Choose the most suitable command for your uploading process (see Appendix C for explanation of options). A dialog box is displayed showing the progress of the procedure. The full process may take several minutes.

Remote Uploading

1. Export the customer data to Q-Controls (see “Exporting/Importing Customer Data”).
2. Inform the user that an upload is available. The user must then select the Upgrade icon on their Q-Controls unit.



NOTE: If an Upgrade icon has not been programmed into the Q-Controls unit, simultaneously pressing the left, right, and up buttons on the unit will start the upload. Ensure that the next upload includes the upgrade function and icon for the Q-Controls unit

Exporting/Importing Customer Data

Every time you create a new customer account, you must export the data to Q-Controls for their records. You must also export customer data if you want Q-Controls to perform any complex editing or remote uploading for you. Occasionally, you will need to import customer data from Q-Controls, which will be sent to you as an e-mail attachment.

To export customer data:

1. From the Customer Data page, click on File and Export in the menu bar.
2. When prompted, save the file on your computer to a location of your choosing.
3. Send an email to qcontrols@pridemobility.com with the file folder as an attachment.

To import customer data:

1. Save the file folder attached in the email from Q-Controls on your computer to a location of your choosing. (If it is a zip file, be sure to unzip it before importing to the Management Software.)
2. From the Customer Data page, click on File and Import in the menu bar.
3. When prompted, find the saved folder and double-click on the file labeled *.FSI.

IV. INTERMEDIATE PROGRAMMING

This section will explain how to perform the more advanced tasks with the management software including:

- Editing screen layouts
- Changing devices
- Using macros

Editing Screen Layouts

Changing the Screen Title

1. From the ICON Management page, select the Edit Screens option button.
2. Scroll through the screens until you find the one you want to change.
3. Type the new name in the Title text box on the screen graphic.

Compacting a Screen

When you have edited a screen, some blank spaces may be present. To tidy the appearance, choose Tools then Screens then Compact Current Screen.

Copying, Moving, and Deleting Icons

From the **ICON Management** page, select the **Edit Screens** option button and click on the icon to be edited. The selected icon is displayed in the **Selected Icon** window. To copy, move, or delete the icon, right click on it. A context menu is displayed with the following options:

- **Copy Cell** Copies the selected cell to the Windows clipboard.
- **Cut Cell** Cuts (moves) the selected cell to the Windows clipboard. The cell is now blank.
- **Clear Cell** Deletes any icon in the selected cell.
- **Paste** Copies a previously cut or copied icon from the clipboard into the selected cell.
- **Swap Cells** To swap the positions of two icons, use the **Copy Cells** command to copy one of the cells to the clipboard as described above. Select the icon in the second cell. Right click on that icon. Choose the **Swap Cells** command.

Changing Devices

If you want to change the device associated with a particular icon, you must first delete the original device from the configuration:

Deleting an IR Device

1. From the **Customer Data** page, click on the down arrow next to the text in the **IR Devices in Use** box.
2. Select the device you want to remove and click on the **Remove** button.

Adding a New IR Device to Existing Icons

1. From the **ICON Management** page, locate the main icon for the device.
2. Click on the **Import Icons** option button.
3. Select the device using the three list boxes in the **Device Database** section of the **InfraRed Database** group box. See figure 6.
4. Select the device name from the **Device Name** list box.
5. Click on the **Add To IR Devices in Use** button.
6. Upload the configuration to the Q-Controls unit.

Using Macros

You can associate a sequence of events or functions to a single macro icon. For example, a **Day-Time** icon could be programmed to run a series of events to open all curtains, turn off all lights, and turn the radio on. A **Night-Time** icon could then reverse this. The time interval between each event can be set with the management software.

Creating a Macro

1. On the **ICON Management** page, navigate to the screen where you want to place the macro icon.
2. Select the **Import Icons** option button.
3. In the **Available Icons** window, select **View** then **Link To Icons** then **Macros**. The page of macro icons is displayed.
4. Click on the desired icon in the **Available Icons** window. The icon is displayed in the **Chosen Icon** box.
5. Click on the screen position where you want the icon. You will be prompted to select a target screen in the lower half of the **ICON Management** page. From the list provided, choose the screen where you want to store the icons for the macro (example: **Custom 2**).
6. Test the new screen (see step 3 in the “Setting up the Main Menu” section of this manual).
7. Select the **Simulate** option button.
8. Navigate to the new screen that you have linked the macro icon to (example: **Custom 2**).

9. Select the Import Icons option button. The Available Icons window is displayed again.
10. Select the icons to be run in the macro and add them to the new screen in the required sequence. Note that the screen is never displayed to the user. When the user selects the macro icon, the Q-Controls unit runs through the icons and functions you have selected.

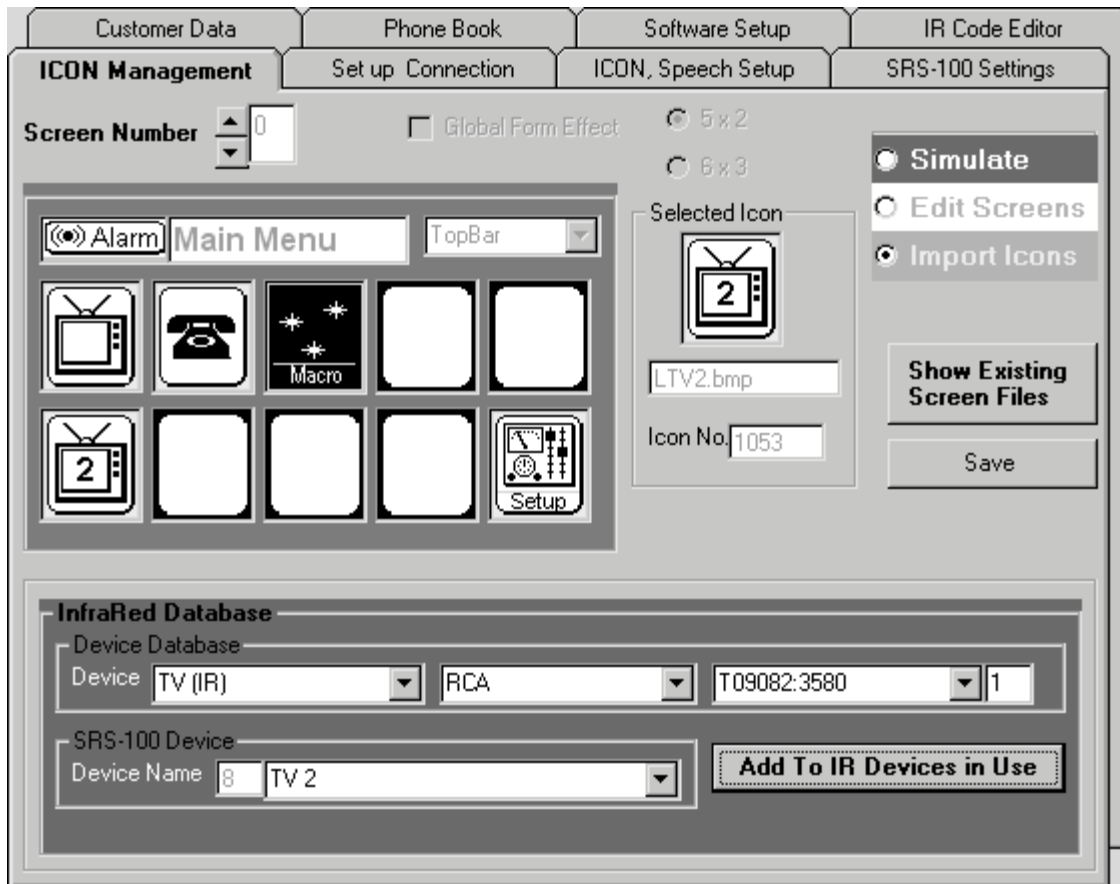


Figure 6. IR Devices

V. ADVANCED PROGRAMMING

This section will explain how to perform tasks with the Q-Controls Management Software that sometimes require Advanced User status and a password. These can be obtained from Q-Controls. Advanced programming includes:

- Deleting Screens
- Creating and editing a user phone book
- Customizing switch settings/scan speeds
- Synchronizing files across a network
- Editing IR codes
- Changing screen icon parameters

Deleting Screens



Note: When you delete a screen, you also delete the linkages between it and other screens. This may render the configuration unusable. We recommend that you only use this feature to remove new screens that you have created. Ensure that all links to the screen have been removed or re-routed before it is deleted.

1. On the menu bar, select Options then Advanced User.
2. Type your password into the Password Entry dialog box and then click on the OK button.
3. Click on the ICON Management tab.
4. Click on the Simulate options button.
5. Navigate to the screen you wish to delete.
6. On the menu bar, select Tools then Screens then Delete Current Screen.

Creating a User Phone Book



Note: It is not possible to download a phone book from a user's Q-Controls unit to the Management Software.

1. Click on the Phone Book tab.
2. Click the options button for the section (ABC, DEF, etc.) in which you want to store the new phone number. See figure 7.
3. Click on the New Entry button.
4. Type the information into the text boxes.
5. Click on the Save Entry button.
6. Repeat steps 1-5 as desired.
7. Click on the Save Phone Book button.
8. Upload the phone book to the Q-Controls unit.

Editing a User Phone Book

The user can edit their own phone book from the Q-Controls unit, but the information they have changed cannot be uploaded to the management software and will have to be done manually. See figure 7.

To edit a phone book:

1. Select the section (ABC, DEF, etc.) where the number is stored.
2. Locate the number using either the Name or Number list boxes.
3. Edit the information as desired and click on the Save Edited Entry button, or click on the Remove Entry button to delete the entry entirely.
4. Repeat steps 1-3 as desired.
5. Click on the Save Phone Book button.

Customizing Switch Settings/Scan Speeds

This function allows you to define the rate at which the Q-Controls unit defines scan speeds for highlighting icons (Scan Delay), the default input device, and the characteristics of scan cycles and clicks. See figure 8.

To change Scan Delay values:

1. On the SRS-100 Settings page, drag the sliding tab until the desired delay setting is shown in the adjacent text box.
2. Click on the setting to be changed (i.e., Lowest, Lo-Med, etc.)



NOTE: You can restore the default values at any time by clicking on the Reset All Values to Default button at the bottom of the page.

The SRS-100 Settings page also allows you to modify the parameters listed in Appendix D by clicking on the down arrows next to each box.

Figure 7. Phone Book Page

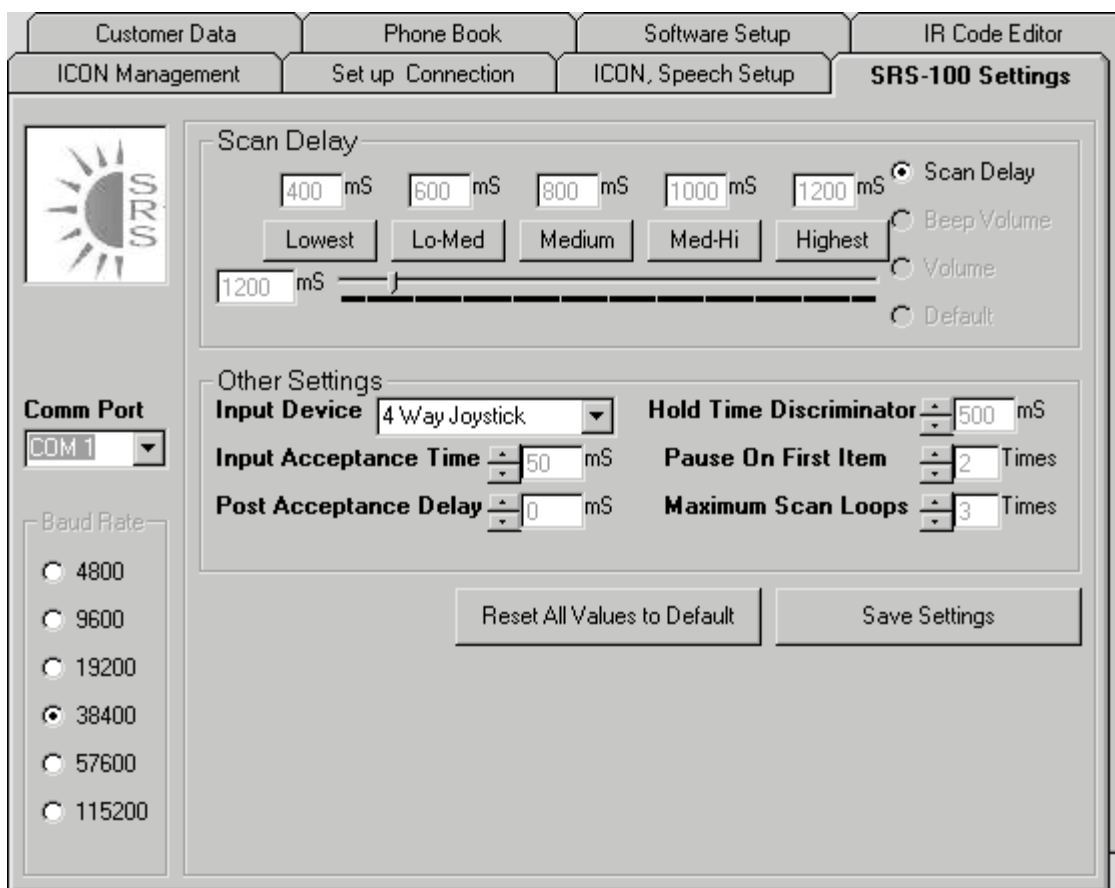


Figure 8. SRS-100 Settings Page

Synchronizing Files Across a Network

In a large Q-Controls management department, it may be advantageous for a number of people to use the same customer database and screen files. The management software allows you to synchronize the same database of client files on multiple computers across a network. To use the management software's file synchronization features you must identify each computer in your network. See figure 9.

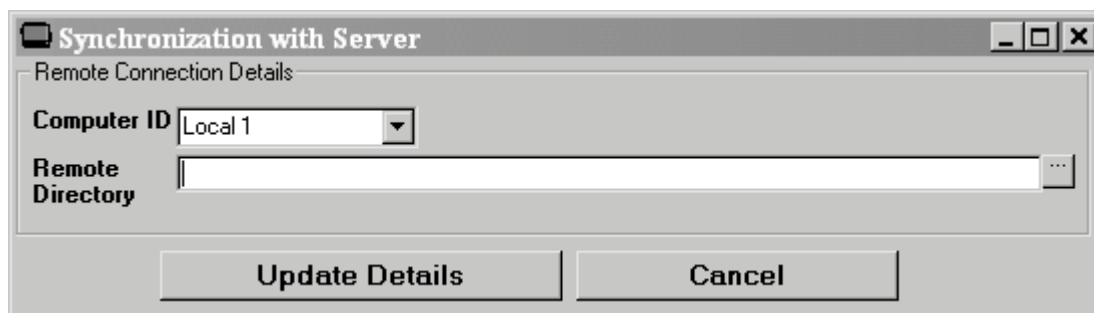


Figure 9. Synchronization Window

To synchronize files:

1. From the menu bar, choose Update then Server Details. The Synchronization With Server dialog box is shown. See figure 9.
2. Select the ID for your computer using the Computer ID list box. If the computer you are working with is to be the source of customer data for the network, choose Server. In other cases, select a node (for example, Local 1) as agreed with your network administrator.
3. If the computer you are working with is not the server, use the Remote Directory text box to identify the folder where the centralized Customer Data file (*.mdb) is stored. Click on the button next to the Remote Directory text box to locate the directory or type the path directly into the text box.
4. Click on the Update Details button to complete the procedure.
5. Repeat this procedure for each computer on the network.

The Update menu also contains commands for maintaining file synchronization:

- **Set Tag** Designates a Customer Data file to be synchronized with the central files.
- **Clear Tag** Prevents a Customer Data file from being synchronized with the central files.
- **Update Server** Transfers files from the local computer to the server computer, updating the central files with any new information from tagged records.
- **Update Local** Transfers the Customer Data files from the server computer to update the local computer with any new customer information provided by other computers in the network.
- **Full Synchronize** Updates all files on both the server computer and the local computer(s).

Editing IR Codes

This allows you to program icons for non-standard devices or to provide customers with a device function not supported by the default configuration file. You can obtain IR codes from Quantum Rehab. Any IR code changes that you make are stored in the customer's configuration only and will not change the default settings used by the management software. See figure 10.

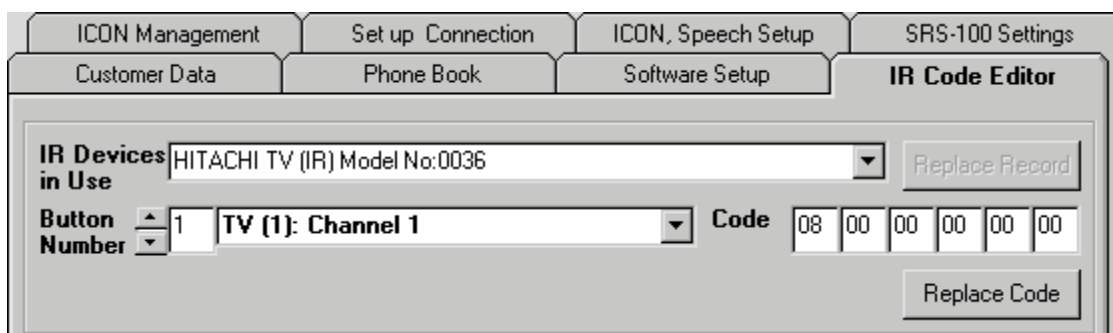


Figure 10. IR Code Editor Page

To Edit IR codes:

1. On the menu bar, select Options then Advanced User.
2. Type your password into the Password Entry dialog box and then click on the OK button.
3. Click on the IR Code Editor tab.
4. Select the device from the IR Devices in Use list box.
5. Select the function using the Button Number controls.
6. Enter the new code in the six Code text boxes.
7. Click on the Replace Code button.

Changing Screen and Icon Parameters

The way a screen and/or icon is initialized, displayed, highlighted, and selected can be customized for the user. Appendix E describes the codes used by the applications to define the screen and icon characteristics. See figure 11.

To view a screen's/icon's parameters:

1. On the menu bar, select Options then Advanced User.
2. Type your password into the Password Entry dialog box and then click on the OK button.
3. Click on the ICON Management tab.
4. Click on the Edit Screens options button.
5. Select the desired screen and/or click on the desired icon. Its parameters are then displayed on the bottom of the screen. See figure 11 for explanation of choices.
6. Change the parameters from the pulldown menus as desired.
7. Repeat steps 5 and 6 as desired.

REF#	NAME	DESCRIPTION
A	Device Location	Physical location of the associated device
B	Object	Type of device in icon ("Form" refers to a screen link)
C	Action	Type of action for a single click, the destination or function, and the screen or function number
D	Double Action	Type of action for a double click, the destination or function, and the screen or function number
E	Display Type	Method for icon display when the icon is not selected (See Appendix E.1)
F	Highlight Method	Method used to differentiate a selected icon (See Appendix E.2)
G	Press Action	Action when an icon is clicked (See Appendix E.3)
H	Release Action	Action when a click is released (See Appendix E.3)
I	Sound Action	Sound associated with an icon when highlighted or selected (See Appendix E.4)

Figure 11. Icon Parameters

VI. APPENDIX A — Screen List

SCREEN#	NAME	DESCRIPTION
0	Main Menu	Contains Alarm and Setup icons that are linked to the Alarm (11) and Setup (4) screens
1 to 3	Custom 1-3	Three blank screens for setting up new screens or macros
4 to 9	Setup	Main setup screen (4) providing further links to the Screen (5), Input Device (6), Scan Speed (7), Beep (8), and Speaker (9) screens
10	MouseAcc	Linked to the Mouse (33) screen and mouse acceleration profiles
11	ALARM	Linked from/to the Main Menu for cancelling the alarm function
12	SIREN	Linked back to the Main Menu for cancelling the siren function
13 to 15	TV	General TV functions
16 to 17	Main Video	General video functions
18 to 20	TV2	Additional TV functions
21 to 22	Video 2	Additional video functions
23	Sw Mouse	Functions for a single switch or 3-way joystick mouse control
24	Bed 2.5	Powered bed functions
25	AnalogSat	Satellite TV functions (other than SKY)
26	TV2 Text	Extra icons for operating Teletext (UK only)
27	TV3 Text	Extra icons for operating Teletext (UK only)
28 to 30	DVD	Three linked screens for operating DVD players
31 to 32	Combi	Two linked screens for operating combination hi-fi stereo systems
33	Mouse	Functions for a joystick or 4-way switch mouse control
34 to 35	Combi 2	Two additional linked screens for operating combination hi-fi stereo systems
36	Amplifier	Reduced function set for operating hi-fi stereo systems
37 to 38	CD Player	Two linked screens for operating CD players
39	Tape	For operating tape players
40	Tuner	For operating a radio tuner
41	Phone	For operating telephones with links to the Phone Book
42	Dialling	For dialling telephones, includes volume controls
43	Intercom	For operating an intercom
44 to 46	TV3	Contains more general TV and Teletext controls
47 to 48	Video 3	Contains more general video operating controls
49	TV1 TEXT	Contains extra icons for operating Teletext (UK only)
50 to 54	SKY	For operating SKY (UK only) including links to Sky Favs (51), TV Guide (52), Numbers (53), and Cursor (54) screens
55 to 57	On Digital	Three linked screens for operating On Digital functions (UK only)
58 to 62	Telewest	Five linked screens for operating Telewest functions (UK only)
63	Chair	Recline/lift chair functions
64	Easy TV	Big and Bold, text-free icons for TV functions
65	Easy VCR	Big and Bold, text-free icons for VCR functions
66	Easy DVD	Big and Bold, text-free icons for DVD player functions
67	Easy CD	Big and Bold, text-free icons for CD player functions

VII. APPENDIX B — Available Icons

CATEGORY	SUB-GROUPS	DESCRIPTION
Link To Icons	Devices, Other Screens, Macros, System	Provide a link to another screen
Radio Frequency Icons	Radio Toggle On/Off, Radio Normal Operation, Radio Link Devices, Radio Bed and Chair, IR Intercom 106/108, IR Intercom 280	For operating RF controlled devices
Household IR Icons.	Main TV, Second TV, Main VCR, Second VCR, Combi HiFi, Satellite, DVD Player, Cable/On Digital, IRDA Digi Cable	For operating individual functions on TVs, VCRs, HiFi Stereos, etc.
Household IR Icons..	Amp, Cassette, CD Player, Tuner	For operating individual functions on TVs, VCRs, HiFi Stereos, etc.
Easy Icons	TV, VCR, DVD, CD	Larger and easier to read than the standard icons
Third Party Devices	Gewa Telephone, Intercom, Gewa Relay Box, Possum Sockets, Intercom/ Telephone, Mobile Phone	For operating various third party devices
Other IR Icons	Misc, Toys, Mouse Icons, Large Icons., Large Icons., Medium Icons., Medium Icons..	Miscellaneous
X10 Icons	Toggle Action, Normal Action, Commands, Dimming	For operating X10 devices

VIII. APPENDIX C — Upload Menu Commands

COMMAND	ACTION
All	Uploads and overwrites the entire Q-Controls configuration, including the software version, except for the phone book
Changes	Uploads the Q-Controls configuration, except for the phone book and software version, with any information that has changed during your current management software session
System Program	Uploads and overwrites the Q-Controls system program with the latest software version available
Icons	Uploads and overwrites the icons held in the Q-Controls unit with the corresponding icons used in the management software (useful for updating the graphics without changing the operation of the Q-Controls unit)
System Settings	Uploads system settings (such as scan speed)
Screens	Uploads and overwrites the Q-Controls screens
Infrared Data	Uploads and overwrites the infrared data held in the Q-Controls unit
Phone Book	Uploads and overwrites the Q-Controls' phone book information
Queue for Remote Upload	Readies one or more configuration files for automatic upload using RoBoX
Make Connection to	Not yet applicable
Terminate Connection	Not yet applicable

IX. APPENDIX D — Other Settings

SETTING	DESCRIPTION	DEFAULT SETTING
Comm Port	The serial port used to connect the uplink cable to the Q-Controls unit	COM 1
Hold Time Discriminator	The maximum length of time allowed before two clicks are treated as separate clicks rather than a double click	500mS
Input Acceptance Time	The minimum length of time that a key/button must be pressed for the Q-Controls unit to recognize the action as a click	50mS
Input Device	The device used to provide input to the Q-Controls unit. May be changed at any time from the Input screen.	4 way Joystick
Maximum Scan Loops	The maximum number of scan cycles that the Q-Controls unit completes before stopping	3 Times
Pause On First Item	The number of scan cycles that the Q-Controls unit pauses on the top left icon on each screen. This provides additional time for a user to select a Menu or Alarm function	2 Times
Post Acceptance Delay	The delay between a key/button press and the initiation of the action related to that key	0mS

IX. APPENDIX E — Method Lists

E.1 Display Type

METHOD LIST	DESCRIPTION
None	Hide icon
Normal	Display same icon for on and off states
With Status	Display on/off versions of icons

E.2 Hilight Method

METHOD LIST	DESCRIPTION
Block Cursor (default)	Invert colors in the icon image (black to white, white to black)
Icon	Display icon with no highlighting
IconN	Display same icon for on and off states
IconS	Display on/off versions of icons
Null	Hide icon
Outline Cursor	Highlight icon with bold outline

E.3 Press and Release Action

METHOD LIST	DESCRIPTION	USE
2 Digit Add	Adds two digits to the Action box before sending information	Two-digit TV channels and multi-CD players
2 Digit Send	Sends two digits specified in the Action box to the device named in the Device Location box	On Digital Favourites (UK only)
3 Digit Add	Adds three digits to the Action box before sending information	Teletext and SKY channels (UK only)
3 Digit Send	Sends three digits specified in Action and Double Action boxes to the device named in the Location box	SKY Favourites, Teletext (UK only)
3Digit Add TeleWest	Adds three digits to dial\$ before sending information to Telewest, avoiding timeouts (UK only)	Telewest
3Digit Send TeleWest	Sends three digits specified in the Action and Double Action boxes to Telewest (UK only)	Telewest
4 Digit Add	Adds four digits to the Action box before sending information	Satellite TV channels
4 Digit Send	Sends four digits specified in the Action and Double Action boxes to the device named in the Device Location box	Satellite TV channels
Add Digit to Dial String	Adds the digit specified in the Action box to the Dial string	Phone screen
Add Names	Adds the ASCII value specified in the Action box to the Name string	Phone Book keyboard screen
Alarm	Activates the Q-Control's alarm socket	Alarms
Alarm Initialisation	Starts alarm sequence	Alarm screen
Back to Prev Menu	N/A	N/A
Bleep	Sounds long tone used to indicate selection	
Blip	Sounds medium tone used for other icons on a screen	
Blop	Sounds low tone used for first icon on a screen	
Clear Dial String	Clears the Dial string	Phone screen
Contdown	Commences descending count	
Contup	Commences ascending count	
Copy Dial String from Memory	N/A	N/A
Dial Infra Red	Sends Dial string from Phone screen via IR	Phone screen
Dial Radio Wave	Sends Dial string from Phone screen via RF	Phone screen
Display System Var	Displays time	Time icon on Setup screen

Q-Controls Management Software User Manual

Hold&New Form**	N/A	N/A
Icon	Displays icon with no highlighting	
IconN	Displays icon with information from list	Phone Book applications
IconNS	N/A	N/A
IconS	Displays on/off versions of icon depending on state	RF Devices and toggle codes
IR Send	Transmits IR code associated with icon while the icon is pressed and stop transmission when icon is released	Most IR icons
IR Send 3 Times	Sends IR code three times on key press	For a short pulse of IR
IR Send 3 Times on Release	Sends IR code three times on key release	For a short pulse of IR
IR Send Once	Sends IR code once only on key press	Dimmer switches to stop them from providing on/off control only
IR Send Once on Release	Sends IR code once on key release (use with Sticky Send as a press action)	Channel scanners
IR Send Toggle	Sends on and off IR codes alternatingly	IR controlled windows or curtains from IconS-type icons
Macro	Executes the macro screen identified in the Action box	Macros
Macro Delay (Value)	Delays progress of value in Action box by 50mS	First icon on a macro screen to set delay for processing icons
Macro Loop	Repeats the macro screen identified in the Action box three times	Macros
Mobile	N/A	N/A
Mouse	Commands to operate an IR mouse	IR mouse
New Form	Goes to the screen identified by the Action box	
New Form2	Goes to the screen identified by the Double Action box	Use as release action if needed
None*	Produces no action when icon is clicked	To deactivate icons
Ocursor*	N/A	N/A
Phone*	Runs remote switch software for phones	Phone screen
Phonelnit	Displays icons used to clear dial and name strings on the Phone screen	Phone screen
Recall	Recalls the Dial and Name strings from phone memory	When used with Release Action "Dial IR Code," the phone number will dial automatically
Relative Form	N/A	N/A
Relative Form2	N/A	N/A
Remote Init**	N/A	N/A
Remove Digit from Dial String	Removes the last digit from the Dial string	Phone screen
RF Send	Transmits RF code associated with icon (single radio action)	Link modules
RF Send Timed	Sends RF command and time to Device Location and Object and operates for a set time	Beds and chairs
RF Send Timed Sticky	Performs the same as RF Send Timed, but in a single scan mode, the cursor will "stick" over the icon for a time of command (specified in Double Action) plus 3 seconds	Beds and chairs
RF Send Toggle	Sends alternating on and off codes via RF	IntelliSocket function from IconS-type icons

Q-Controls Management Software User Manual

RF Send Toggle	Sends alternating on and off codes via RF	IntelliSocket function from IconS-type icons
Set N	Sets the variable N to the value identified in the Action box	Storing phone number in Phone Book
SetSys	Sets system variable	Input device, scan speed
Siren Initialisation	Starts siren sequence	Siren screen
SocketP	N/A	N/A
Speech Serial*	N/A	N/A
StickSendScan	Sends IR code when key is pressed until the the key is pressed again to stop it (speed of repeat is 2x the scan delay)	TV channels
Sticky Send	Sends IR code when key is pressed until the the key is pressed again to stop it (speed of repeat is dependent upon the scan delay)	Volume controls
Store	Stores the Dial and Name strings in phone memory	Phone Book screens
TeleWest Send	Sends Telewest IR (UK only)	Telewest
TeleWest Send3	Sends Telewest IR contained in Action box and repeats 3 times (UK only)	Telewest
TeleWest2DigitAdd*	Adds two digits to dial\$ before sending information to TeleWest, avoiding timeouts (UK only)	Telewest
TeleWest2DigitSend*	Sends two digits specified in the Action box to TeleWest (UK only)	Telewest
Top Bar	Displays icons and top bar as normal (default)	
Undo Names	Removes the last character from the Dial string	Phone Book keyboard screen
Visual Macro*	N/A	N/A
X10	Sends X10 IR code to the command center	Dimmer switches, all on, all off
X10Bright	Brightens device. The command is sent repeatedly as long as the icon is selected	Lamp or dimmer switch modules
X10Dim	Dims device. The command is sent repeatedly as long as the icon is selected	Lamp or dimmer switch modules
X10Level	Dims device. The command turns the device off and then sends the dimming command to achieve the set level.	Lamp or dimmer switch modules
X10Off	Turns a device off. The device selector and the off command are sent to the command center.	Appliance modules, lamp modules
X10On	Turns a device on. The device selector and the on command are sent to the command center.	Appliance modules, lamp modules

* Press Action only

** Release Action only

E.4 Sound Action

METHOD LIST	DESCRIPTION
1AH:Blorp	Low tone used for first icon on a screen
1BH:Blip	Medium tone used for other icons on a screen
1CH:Bleep	Longer tone used to indicate selection
1DH:Reserve3	N/A
1EH:Reserve2	N/A
1FH:Reserve1	N/A

Pride

USER SETUP GUIDE

www.quantumrehab.com
www.pridemobility.com
www.prideservice.com
www.prideprovider.com

Pride Mobility Products Corporation
182 Susquehanna Avenue
Exeter, PA 18643
USA

Pride Mobility Products Company
380 Vansickle Road Unit 350
St. Catharines, Ontario L2R 6P7
Canada

Pride Mobility Products Ltd.
Unit 106, Heyford Park Camp Road
Upper Heyford, Oxfordshire OX25 5HA

**Pride Mobility Products Australia Pty.
Ltd.**
21 Healey Road
Dandenong, 3175
Victoria, Australia

Pride Mobility Products Italia S.r.l.
Via del Progresso - ang. Via del Lavoro
Loc. Prato della Corte
00065 - Fiano Romano (RM)

Pride Mobility Products Europe B.V.
Tijnmuiden 28
1046 AL Amsterdam
The Netherlands

QUANTUM REHAB

MOVING AT THE SPEED OF LIFE™