

LIFTS & RAMPS CATALOG



Pride® Lifts & Ramps

MOBILITY MADE EASY.



Whats Inside?

- ▶ Exterior Lifts
 - Outlander Series Pages 3-4
 - Full Platform Page 3
 - XL..... Page 3
 - Dual Entry Page 3
 - Travel Mobility Page 3
 - Commander 450 Page 4
- ▶ Interior Lifts
 - Backpacker Series Page 5
 - AVP 2.0 Page 5
 - Plus..... Page 5
 - Commander 200 Page 6
- ▶ Ramps
 - Rubber Threshold Ramps..... Page 7
- ▶ Accessories Page 7
- ▶ Lift Finder..... Page 8
- ▶ Specs Pages 9-10



Whether you're taking your scooter or power chair on the road, looking for a vehicle transfer solution or want to improve the transition areas in and around your home, *Pride® Lifts and Ramps* has adaptive solutions to meet all of your accessibility needs.

Choosing the right Pride Mobility Lift

When choosing the perfect Pride Mobility Lift to meet your specific needs, consider the following:

► Interior Lifts

- Provides your mobility device with protection and enclosure from weather conditions- great options for vans, SUVs and crossover vehicles (CUVs)

► Exterior Lifts

- Hitch-mounted lift systems are the easiest to install and provide the most vehicle and mobility device applications. Boom-style lifts provide increased lifting capacities and are ideal for pickup trucks



Outlander Series

The **Outlander Exterior Lift Series** is designed to provide a durable, easy-to-use system to take your power chair or scooter with you. This simple, hitched-based installation requires little-to-no modification to the vehicle or mobility device and is a great lift option for sedans, SUVs, minivans, full-size vans and pickup trucks. Standard features include integrated license plate bracket, LED puddle light for ease of use at night, LED on/off indicator light, on/off key switch, drive on/off platform, manual override with tool kit, hardwire kit and phosphate undercoating for weather resistance.



Outlander Full Platform

FEATURES AND BENEFITS

- 350 lb. lifting capacity
- Compatible with Class II, III, or IV hitches
- Adjustable wheel chocks (tire stops that can be adjusted to wheelbase of PMD)
- Ideal for mobility scooters and power wheel chairs
- Standard hardwire kit



Outlander XL

FEATURES AND BENEFITS

- 350 lb. lifting capacity
- Integrated scooter lock-down arm
- Compatible with Class III or IV hitches
- Ideal for larger scooters
- Standard hardwire kit



Outlander DE Dual Entry

FEATURES AND BENEFITS

- 350 lb. lifting capacity
- Integrated scooter lockdown arm
- Compatible with Class II, III, or IV hitches
- Ideal for small to mid-size 3 and 4-wheel mobility scooters
- Standard hardwire kit



Outlander TM Travel Mobility

The **Outlander TM Exterior Lift** was specifically designed with travel mobility scooters in mind for an easy-to-use power operated lift to take your travel mobility scooter with you. The open platform reduces the overall weight of the lift system to increase compatibility with Class II hitches. The lift features an integrated automatic scooter lockdown arm designed to provide a secure self-locking mechanism for compatible mobility scooters. Simple, hitch-based installation requires little to no modification of your vehicle and allows for easy removal.

FEATURES AND BENEFITS

- 150 lb. lifting capacity
- Compatible with Class II, III, and IV hitches
- LED puddle light for ease of use at night
- Ideal for 3 and 4-wheel travel mobility scooters
- Standard hardwire kit

Commander 450

The **Commander 450** exterior powered boom-style lift is the perfect user-friendly lift option for pickup trucks that provides fast loading and unloading of your mobility device. It is standard with a 450 lb. lifting capacity for heavier power chairs and scooters and is available in 2 and 3-axis. This lift delivers maximum durability with the ability to lift and lower your mobility device to the ground over the truck's tailgate or back into the truck bed with ease.



Commander 450



FEATURES AND BENEFITS

- 450 lb. lifting capacity
- 2-axis design: Powered up/down and powered in/out
- 3-axis design: Powered up/down, powered in/out, powered adjustable telescoping boom
- Standard single seat post or 4-point seat post carabiner kit
- Coastal community powder coated
- Telescoping mounting brackets
- Complete weather-proof design
- Waterproof push-button hand control
- Compatible with Pride and most Quantum power chairs and scooters

INTERIOR LIFTS

Backpacker® Series

Backpacker® Interior Lifts are specifically engineered for scooter and power chair transportation, while providing concealment and weather protection for your mobility product. The low-profile, one-piece design allows for easy loading and unloading of your mobility product – simply drive on and off the all-steel constructed platform. Features include a durable 12-volt motor with easy-to-use two button hand control for simple and reliable operation. Most applications do not require drilling or vehicle modification and include a quick install kit for easy installation.

NEW!

MADE IN
USA

Backpacker® AVP 2.0



- **NEW** standard dual remote provides safe, easy hardwire and wireless operation
- **NEW** rear hatch safety sensor disables lift when rear hatch is closed
- **NEW** redesigned hardwire routing provides easy installation with no fears of pinching or damaging power harness during operation
- **NEW** puddle light for platform illumination in low-light settings

MADE IN
USA

Backpacker® PLUS



- Engineered for the transportation of scooter and power chairs in minivans and full size vans
- Large 43" usable platform length and 27" product width to accommodate larger mobility devices
- Most applications do not require the removal of the 2nd row seating

Commander 200

Quickly load and unload your mobility device with ease using the **Commander 200**. This interior lift is the perfect user-friendly lift option for various vehicles. This lift delivers maximum maneuverability by powering up and down to load and unload your mobility device. With a 200-lb. weight capacity, this lift can be used for travel mobility, power chairs, manual wheelchairs and most foldable scooters and power chairs.

NEW!

MADE IN
USA

Commander 200



Shown with trunk mount

FEATURES AND BENEFITS

- Telescoping boom allows up to 12" of manual adjustment
- Standard single seat post docking kit or 4-point seat post carabiner kit
- Trunk mount or hitch mount available*
- Mobility seats must be removed prior to loading and unloading
- Easy assembly and disassembly in under 30 seconds
- Assemble - insert column into the base and attach the boom arm on the column
- Disassemble - remove boom arm on the column and remove column from the base
- Compatible with power chairs, scooters, manual wheelchairs, most foldable power chairs and scooters

* **Note:** When using the trunk application, the column and boom arm will need to be removed from the mount to close the trunk of the vehicle.

When using the hitch application, the column and boom arm must be removed from the hitch before the vehicle is in motion.

This is not an exterior lift and the hitch mount is only intended to load and unload the mobility device into the trunk of the vehicle.

RAMPS

Rubber Threshold Ramps

Rubber Threshold Ramps provide a durable, safe means of navigating uneven surfaces including small steps and doorways. A hidden dovetail locking system allows for easy installation and incremental ramp height adjustment of up to 4 inches. Modular design makes Pride® Rubber Threshold Ramps a practical and affordable accessibility solution for indoor and outdoor use.



FEATURES AND BENEFITS

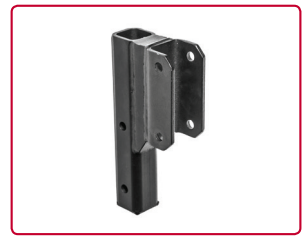
- 850 lb. weight capacity
- Meets ADA slope requirements
- Constructed of high-impact recycled rubber for durability and long life
- Seven total pieces
 - ½ increments starting from 1" to 4" height capability
 - 36" of usable space
 - Can be trimmed, cut or notched for a custom fit
- Slip resistant
- Easy to install
- Maintenance-free

ACCESSORY OPTIONS

These great accessories for Pride® Lifts will enhance the convenience and performance of your scooter or power chair lift. The swing-away adaptor for the Outlander Exterior Lift offers increased pivot power for easier access to cargo spaces, trunks or tailgates. The battery pack serves as an additional power source, eliminating the need for wires running between your vehicle's battery and your wheelchair lift. Unleash your vehicle lift's full potential with these mobility lift accessories from Pride.



Swing-away adaptor



Hitch tube riser



Battery pack



Ratcheting straps



Weather cover

LIFT FINDER



Use the Pride Mobility Products Lift Finder to find a compatible lift for your mobility product.

1) Select your vehicle year, make and model

Select Your Vehicle:

2017 ▼

Honda ▼

Odyssey w/Stow n Go ▼

2) Select your mobility product

Select Your Power Chair or Scooter:

Pride Mobility ▼

Go-Go Elite Traveller 4w ▼

3) Select your lift

(A list of compatible lifts will appear after you select your mobility product in step 2, so step 3 is optional.)

Select a Pride Lift: (Optional)

Outlander Full Platform ▼

pridemobility.com/lift-finder

SPECIFICATIONS

NEW!

NEW!

	Backpacker® AVP 2.0 Interior Lift	Backpacker® Plus Interior Lift	Commander 200 Interior Lift Hitch & Trunk	Outlander Full Platform Exterior Lift
BASE WEIGHT ⁵	193 lbs.	155 lbs.	Trunk Mount – 43 lbs. Hitch Mount – 49 lbs.	82 lbs.
MAX. WEIGHT CAPACITY	350 lbs.	350 lbs.	200 lbs.	350 lbs.
MAX. PRODUCT WIDTH	27"	27"	N/A	28"
OVERALL PLATFORM LENGTH	42" - 34" (41" - 33" usable surface)	44" (43" usable surface)	N/A	43" (42" usable surface)
MAX. TRAVEL DISTANCE FROM THE GROUND	37"	26"	70"	21"
MOTOR	Sealed 12 Volt DC	Sealed 12 Volt DC	12 Volt DC	Sealed 12 Volt DC
WARRANTY	3-Year Transferable	3-Year Transferable	3-Year Transferable	3-Year Transferable
HITCH CLASS ^{4,6}	N/A	N/A	Class II, III & IV	Class II, III & IV
ACCESSORY OPTIONS	<ul style="list-style-type: none">• Battery pack w/ charger• Seat belt style restraint used	<ul style="list-style-type: none">• Battery pack w/ charger• Seat belt style restraint used	Go Chair® docking kit	<ul style="list-style-type: none">• Battery pack w/ charger• Swing-away adaptor®• Scooter hold-down arm• Power chair hold-down bar• Strap kit
VEHICLE PLATFORM	Full-size Van, Minivan, SUV and Crossover	Minivan, Full-size Van ³	Sedan, Full-size Van, Minivan, Crossover & Hatch Back	Full-size Van, Minivan, Truck, Sedan, SUV and Crossover
COMPATIBLE PRODUCTS ^{1,2}	All Pride® Scooters & Pride®/Quantum® PWCs (including Jazzy Air®) with contoured, Specialty & Synergy® seating, And equivalent competitor products Except: Pursuit®, Pursuit® XL, Raptor	All Pride® Scooters & Pride®/Quantum® PWCs with contoured, Specialty & Synergy® seating, And equivalent competitor products Except: Pursuit®, Pursuit® XL, Raptor	Go-Go® Travel Mobility Scooters, Jazzy® Elite ES Portable, Jazzy® Passport & Jazzy® Select Series Compatible with manual wheelchairs, most foldable power chairs and scooters.	All Pride® Scooters & Pride®/Quantum® PWCs with contoured, Specialty & Synergy® seating And equivalent competitor products Except: Pursuit®, Pursuit® XL, Maxima 3W & 4W, Raptor, Victory® and Celebrity® Scooter Lines
INTERIOR LIFTS				

FOOTNOTES

- 1) Lifting weight does not include accessories or certain upgraded seating. Please contact Customer Service for greater detail.
- 2) Vehicle dependent.
- 3) May require vehicle modification.
- 4) Hitch weight carrying capacity varies by vehicle. Call for details.

- 5) May not include some accessories..
- 6) Class II, III and IV only.

Pride® Lifts & Ramps

Outlander DE Exterior Lift	Outlander XL Exterior Lift	Outlander TM Exterior Lift	Commander 450 Exterior Lift 2 & 3 Axis
84 lbs.	94 lbs.	79 lbs.	109 lbs.
350 lbs.	350 lbs.	150 lbs.	450 lbs.
27"	27"	24"	N/A
51" (42" usable surface)	56.75" (49" usable surface)	39" (37" max. product length)	N/A
21"	21"	21"	70"
Sealed 12 Volt DC	Sealed 12 Volt DC	Sealed 12 Volt DC	12 Volt DC
3-Year Transferable	3-Year Transferable	3-Year Transferable	3-Year Transferable
Class II, III & IV	Class II, III & IV	Class II, III & IV	N/A
<ul style="list-style-type: none"> • Battery pack w/ charger • Swing-away adaptor[®] • Strap kit • Scooter hold-down arm 	<ul style="list-style-type: none"> • Battery pack w/ charger • Swing-away adaptor[®] • Strap kit 	<ul style="list-style-type: none"> • Battery pack w/ charger • Swing-away adaptor[®] 	N/A
Full-size Van, Minivan, Truck, Sedan, SUV and Crossover	Full-size Van, Minivan, Truck, Sedan, SUV and Crossover	Full-size Van, Minivan, Truck, Sedan, SUV and Crossover	Full-size Van, Truck, SUV and Crossover
Victory [®] Twin, Victory [®] 10 3W & 4W, Victory [®] 10 LX w/CTS & Maxima 3W & 4W And equivalent competitor products Except: Pursuit [®] , Pursuit [®] XL, Raptor	Victory [®] 10 LX w/CTS, Pursuit [®] & Maxima 4W And equivalent competitor products Except: Pursuit [®] XL, Raptor	All Go-Go [®] Travel Mobility Products And equivalent competitor products Except: Go-Go [®] Folding Scooter	All Pride [®] Scooters, Power Chairs and some Quantum [®] units And equivalent competitor products Except: Pursuit [®] XL, Raptor

EXTERIOR LIFTS

Pride[®]

Lifts & Ramps

MOBILITY MADE EASY.



AUTHORIZED PRIDE[®] PROVIDER

Dealer Sticker



pridemobility.com |    