

SPECS

		Front Tires	Rear Tires	Maximum Speed ²	Ground Clearance ^{4,11,14}	3-W Turning Radius ⁴	4-W Turning Radius ⁴	3-W Length /Width ^{4,10}	4-W Length /Width ^{4,10}	Seat-to-Ground Height Range	(3/4-wheel) Weight ^{3,4,12}
TRAVEL MOBILITY	Jazzy® Zero Turn	2"x 7" SOLID	2.5"x9" SOLID	UP TO 4 MPH	1.4" at motor	N/A	38.25"	N/A	45.75"/20"	21.5"-23.5"	120 LBS.
	Revo™ 2.0	3" x 8" SOLID (3W) 3" x 9" SOLID (4W)	3" x 9" SOLID	UP TO 5 MPH	3W: 3.25" 4W: 3.5" at mid-frame	40"	52"	46"/20.75"	47"/20.75"	21-23.5"	120 LBS./132 LBS.
	Jazzy® Passport	8" SOLID	12" PNEUMATIC	UP TO 3.6 MPH	3" at motor	N/A	24.25"	N/A	40"/23.5"	19"	54 LBS. with seat
	Go Chair®	3" x 6" SOLID	3" x 9" SOLID	UP TO 3.7 MPH	1.8" at motor 1.7" at anti-tip 2.7" at footplate	N/A	25.5" with foot platform	N/A	28.5" without footplate 33"/23.5"	22"-23"	67 LBS.
	Go-Go® Ultra X	2" x 8" SOLID (3W) 2" x 7" SOLID (4W)	2.5" x 8" SOLID	UP TO 4 MPH	1.3" at transaxle	33"	44"	37"/19.5"	39.5"/19.5"	18.25"-20.25"	76 LBS./80 LBS.
	Go-Go Elite Traveller®	2" x 8" SOLID (3W) 2" x 7" SOLID (4W)	2.5" x 8" SOLID	UP TO 4 MPH	1.38" 0.75" at anti-tip 2.25" at mid-frame	33"	44"	37"/19.5"	39.5"/19.5"	18.25"-20.25"	76 LBS./80 LBS.
	Go-Go® Sport	3" x 8" SOLID (3W) 3" x 9" SOLID (4W)	3" x 9" SOLID	UP TO 4.7 MPH	1.5" at motor	36"	50.5"	42"/21.25"	43"/21.25"	20.5"-22"	93 LBS./99 LBS.
VALUE SERIES	Go-Go® LX with CTS Suspension	2" x 8" SOLID (3W) 2" x 7" SOLID (4W)	2.5" x 8" SOLID	UP TO 4.4 MPH	UP TO 11.4 MPH @ 200 LBS. UP TO 11 MPH @ 350 LBS.	33"	44.75"	39.75"/20.5"	41"/20.5"	20.75"-22.25"	85LBS./87 LBS.
	Go-Go® Folding Scooter	1.5" x 7" SOLID	2" x 8" SOLID	UP TO 4 MPH	2.3"	32"	N/A	37"/19"	N/A	20.5"	51 LBS.
MID-SIZE LUXURY	Victory® 10.2	3.5" x 10" SOLID	3.5" x 10" SOLID	UP TO 5.2 MPH	2.4" at transaxle 2.1" at anti-tip 3.0" at side deck	42"	52.25"	45.25"/22.25"	47"/22.25"	22"-24"	130.25 LBS./139 LBS.
	Victory® Twin	DUAL 3" x 9" SOLID	3.5" x 10" SOLID	UP TO 5.25 MPH	3" at mid-frame	N/A	42"	N/A	46"/26"	23"-24.5"	N/A/150 LBS.
HEAVY-DUTY	Victory® LX Sport ¹³	3.5" x 10" SOLID (PNEUMATIC OPTIONAL)	3.5" x 10" SOLID (PNEUMATIC OPTIONAL)	UP TO 8 MPH	2.2" at motor 3.15" at mid-frame	N/A	61.25"	N/A	47"/25.62"	23.5"-25"	160 LBS
	Victory® 10 LX with CTS Suspension ¹³	3.5" x 10" SOLID (PNEUMATIC OPTIONAL)	3.5" x 10" SOLID (PNEUMATIC OPTIONAL)	UP TO 5.6 MPH	2.4" at transaxle	N/A	60"	N/A	47"/22.25"	23.5"-25.5"	179 LBS
FULL-SIZE LUXURY	Maxima	3" X 10" SOLID	4" x 10" SOLID	UP TO 5.3 MPH	4.25" 3W 3.25" 4W	50.5"	54"	46"/25.5"	47"/25.5"	22.5"-24.5"	171 LBS./176 LBS.
	Pursuit® ES ¹³	3" X 13" PNEUMATIC	13" PNEUMATIC	UP TO 6.25 MPH HD: UP TO 9.5 MPH	3.5"	N/A	68.5"	N/A	53.25"/25"	24.75"-26.25"	161 LBS.
	Wrangler™	14.5" TUBELESS PNEUMATIC	14.5" TUBELESS PNEUMATIC	UP TO 11.4 MPH @ 200 LBS. UP TO 11 MPH @ 350 LBS.	5.5" at motor	N/A	94.75"	N/A	61.25"/32.5"	30"-31.5"	274 LBS.
	Pursuit® XL ¹³	13" PNEUMATIC	13" PNEUMATIC	UP TO 7.5 MPH	5.25" at mid-frame	N/A	82.5"	N/A	56"/27.25"	26.25"-27.75"	259.9 LBS.
	Raptor ¹³	3" X 16" PNEUMATIC	3" X 16" PNEUMATIC	UP TO 14 MPH	3.5" at mid-frame	60"	N/A	59"/24.75"	N/A	28"	208 LBS.

1. All shroud panels included.

2. Varies with user weight, terrain type, battery amp-hour (AH), battery charge, battery condition and tire condition.

This specification can be subject to a variance of (+ or -) 10%.

3. Battery weight not included.

4. Due to manufacturing tolerances and continual product improvement, this specification can be subject to variance of + or - 3%.

5. Battery pack is 18 lbs. with 12AH batteries.

6. Deep cycle (AGM or gel cell type recommended).

7. 18 AH battery pack weighs 29.5 lbs.

8. Tested in accordance with ANSI/RESNA, WC Vol 2, Section 4 and ISO 7176-4 standards. Results derived from theoretical calculations based on battery specifications and drive system performance.

Test conducted at maximum weight capacity.

9. Battery weight may vary based on manufacturer.

10. Width of base (not including seat).

11. Does not account for anti-tip clearance.

12. Includes standard seat weight.

13. Light package.

14. At midframe.

Seat Type (Standard)	Seat-to-Deck Height Range	Battery Weight ⁹	Battery Requirements ⁶	Per Charge Range (Max.) ^{3,8}	Battery Charger	Maximum Weight Capacity	Suspension	Weight of Heaviest Piece ⁴
COMPLACT FOLDABLE, MOLDED PLASTIC (17" X 17")	16"-18"	13.5 LBS. EA.	(2) 22AH (INCLUDED)	UP TO 13.4 MILES (200 LBS.) UP TO 11.6 MILES (325 LBS.)	OFF-BOARD, 3.5A	325 LBS.	FRONT AND REAR	48 LBS. (REAR SECTION)
FOLDABLE, MOLDED PLASTIC (20" X 18")	15"-18"	25 LBS. EA.	(2) U-1 (INCLUDED)	3W: UP TO 17.4 MILES (200 LBS.) UP TO 13.2 MILES (375 LBS.) 4W: UP TO 17.8 MILES (200 LBS.) UP TO 12.4 MILES (375 LBS.)	OFF-BOARD, 3.5A	375 LBS.	FRONT AND REAR	48 LBS. (3-WHEEL) (REAR SECTION) 57 LBS. (4-WHEEL) (FRONT SECTION)
GRAY FOAM (17.5" X 16.5")	14.5" (NO ADJUSTMENT)	7 LBS.	(1)18AH (LITHIUM ION) (INCLUDED)	UP TO 11 MILES @ 200 LBS. (STANDARD) UP TO 6.3 MILES @ 200 LBS. (OPTIONAL TRAVEL BATTERY) UP TO 9.6 MILES @ 250 LBS (STANDARD) UP TO 5.7 MILES @ 200 LBS. (OPTIONAL TRAVEL BATTERY)	OFF-BOARD, 2A	250 LBS.	LIMITED	N/A
COMPACT, FOLDABLE (18" X 17")	N/A	14 LBS. EA.	(2)18AH (INCLUDED)	UP TO 8.7 MILES (300 LBS.) UP TO 13.2 MILES (200 LBS.) (10.9 MILES WITH EXTENDED RANGE BATTERIES)	OFF-BOARD, 2A	300 LBS.	LIMITED	36 LBS. (REAR SECTION)
COMPACT, FOLDABLE (17" X 17")	15.75"-17.25"	9.3 LBS. EA. ⁵	(2) 12AH INTERCEPTOR (INCLUDED)	3W: UP TO 6.9 MILES 4W: UP TO 7.2 MILES	OFF-BOARD, 2A	260 LBS.	N/A	29 LBS. (3-WHEEL) (FRONT SECTION) 34 LBS. (4-WHEEL) (FRONT SECTION)
COMPACT, FOLDABLE (17" X 17")	15.75"-17.25"	13.3 LBS. EA. ⁷	(2) 22AH INTERCEPTOR (INCLUDED)	3W: UP TO 14.6 MILES (22AH) 4W: UP TO 13.9 MILES (22AH) ¹¹	OFF-BOARD, 2A	300 LBS.	N/A	29 LBS. (3-WHEEL) (FRONT SECTION) 34 LBS. (4-WHEEL) (FRONT SECTION)
COMPACT, FOLDABLE (17" X 17")	17"-18"	13.3 LBS. EA. ⁷	(2) 22AH INTERCEPTOR (INCLUDED)	3W: UP TO 16 MILES 4W: UP TO 16.2 MILES	OFF-BOARD, 3.5A	325 LBS.	N/A	35 LBS. (3-WHEEL) (FRONT SECTION) 44 LBS. (4-WHEEL) (FRONT SECTION)
COMPACT, FOLDABLE (17" X 17")	16.25"-17.25"	13.3 LBS. EA. ⁷	(2) 22AH INTERCEPTOR (INCLUDED)	3W: UP TO 11.7 MILES 4W: UP TO 14.6 MILES	OFF-BOARD, 2A	300 LBS.	FRONT AND REAR	34 LBS. (3-WHEEL) (FRONT SECTION) 37 LBS. (4-WHEEL) (FRONT SECTION)
COMPACT, FOLDABLE (16" X 13")	13"	9 LBS. EA. (SEALED LEAD ACID) / 5 LBS. EA. (LITHIUM ION)	(2) 12AH BATTERIES INCLUDED OR (1) OPTIONAL 12AH (LITHIUM ION) BATTERY	UP TO 13 MILES (LITHIUM ION) UP TO 9.3 MILES (SEALED LEAD ACID)	OFF-BOARD, 2A (SEALED LEAD ACID) OFF-BOARD, 2.5A (LITHIUM ION)	250 LBS.	N/A	51 LBS. (UNIT DOES NOT DISASSEMBLE- UNIT WEIGHT WITHOUT BATTERY PACK)
FOLDABLE, MOLDED PLASTIC (18" X 17")	15.25" – 17.25"	24 LBS. EA./ 32 LBS. EA.	(2) U-1 (INCLUDED) OR (2) 40AH (OPTIONAL)	3W/4W: UP TO 11 MILES (U-1) 3W: UP TO 13 MILES (40AH) 4W: UP TO 13.5 MILES (40 AH)	OFF-BOARD, 3.5A (U-1) OFF-BOARD, 5A (40 AH)	400 LBS.	N/A	56.5 LBS. (3-WHEEL) (FRONT SECTION) 64.5 LBS. (4-WHEEL) (FRONT SECTION)
FOLDABLE, MOLDED PLASTIC (18" X 17")	17.5"-19"	24 LBS. EA./ 32 LBS. EA.	(2) U-1 (INCLUDED) OR (2) 40AH (OPTIONAL)	UP TO 11.1 MILES (WITH U-1 BATTERIES)	OFF-BOARD, 3A (U-1) OFF-BOARD, 5A (40 AH)	350 LBS.	N/A	55 LBS. (FRONT SECTION)
HIGH-BACK RECLINER WITH SEAT SLIDE, SWIVEL, ADJUSTABLE ARMS AND HEIGHT-ADJUSTABLE HEADREST (18" X 18")	16.5"-18.5"	30.2 LBS. EA	(2) 40AH	UP TO 19.7 MILES (200 LBS.) UP TO 13 MILES (400 LBS.)	OFF-BOARD, 5A (40AH)	400 LBS.	FRONT AND REAR	77 LBS. (4-WHEEL) (FRONT SECTION)
HIGH-BACK RECLINER WITH SEAT SLIDE, SWIVEL, ADJUSTABLE ARMS AND HEIGHT-ADJUSTABLE HEADREST (18" X 18")	16.5"-18.5"	24 LBS. EA./ 32 LBS. EA.	(2) U-1 (INCLUDED) OR (2) 40AH (OPTIONAL)	UP TO 16 MILES	OFF-BOARD, 5A (40AH)	400 LBS.	FRONT AND REAR	77.6 LBS. (4-WHEEL) (FRONT SECTION)
DELUXE CONTOURED MEDIUM-BACK (22"X18")	3W: 16"-18" 4W: 16"-18"	38 LBS. EA. (NF-22 OR 55AH) 24 LBS. EA. (U-1)	(2) NF-22 INTERCEPTOR (INCLUDED) OR (2) U-1 (POWER ELEVATING SEAT)	3W: UP TO 18 MILES, U-1 (POWER ELEVATING SEAT) UP TO 9.6 MILES 4W: UP TO 16 MILES	OFF-BOARD, 5A	500 LBS.	N/A	76 LBS. (3-WHEEL) (REAR SECTION) 76 LBS. (4-WHEEL) (REAR SECTION)
HIGH-BACK RECLINER WITH SEAT SLIDE, SWIVEL, ADJUSTABLE ARMS AND HEIGHT-ADJUSTABLE HEADREST (18" X 18")	17"-18.75"	53 LBS. EA. (75AH)	(2) GROUP 24	GROUP 24: UP TO 33.6 MILES HD: UP TO 22 MILES	OFF-BOARD, 5A (NF-22) OFF-BOARD, 8A (GROUP 24)	350 LBS.	FRONT AND REAR	118 LBS. (MAIN FRAME)
LIMITED RECLINING H/B PILLOW TOP (18"X16.5")	18.75"-20.25"	48 LBS. EA. (75 AH) 60 LBS. EA. (100 AH)	(2) 75AH (STANDARD) (2) 100 AH (OPTIONAL)	UP TO 18.6 MILES @ 350 LBS. (75AH) UP TO 24.2 MILES AT 350 LBS. (100AH) UP TO 22.6 MILES @ 200 LBS. (75AH) UP TO 29.4 MILES @ 200 LBS. (100AH)	OFF-BOARD, 8A	350 LBS.	FRONT & REAR	219 LBS. (UNIT DOES NOT DISASSEMBLE)
HIGH-BACK RECLINER WITH SEAT SLIDE, SWIVEL, ADJUSTABLE ARMS AND HEIGHT-ADJUSTABLE HEADREST (18" X 18")	21"-22.5"	53 LBS. EA. (75AH) 60 LBS. EA. (100AH)	(2) GROUP 27 OR (2) GROUP 24	GROUP 27: UP TO 30 MILES GROUP 24: UP TO 22 MILES	OFF-BOARD, 8A	400 LBS.	FRONT AND REAR	205 LBS. (MAIN FRAME)
HIGH-BACK (20" X 18") (100" LIMITED RECLINE)	19"	53 LBS. EA.	(2) 75AH (INCLUDED)	19 MILES (UP TO 400 LBS.) 31 MILES (UP TO 220 LBS. AND AT LOW SPEED)	OFF-BOARD, 8A	400 LBS.	FRONT AND REAR	N/A (UNIT DOES NOT DISASSEMBLE)



Get Out There!

Beamsville, Ontario • 888-570-1113

pridemobility.ca |



TRAVEL MOBILITY

GOCHAIR®



Feather-touch disassembly

Color Choices INTERCHANGEABLE SHROUDS¹

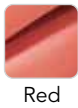


GOOGO®
ULTRA^X



ALSO AVAILABLE
IN 3-WHEEL

Included Color⁶

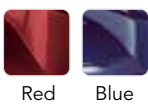


GOOGO®
ELITE TRAVELLER®



ALSO AVAILABLE
IN 4-WHEEL

Included Colors INTERCHANGEABLE SHROUDS¹

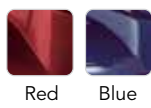


GOOGO®
SPORT



ALSO AVAILABLE
IN 3-WHEEL

Included Colors INTERCHANGEABLE SHROUDS¹

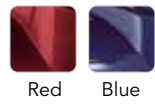


GOOGO®
LX WITH CTS SUSPENSION



ALSO AVAILABLE
IN 3-WHEEL

Included Colors



Optional Colors INTERCHANGEABLE SHROUDS¹



GOOGO®
FOLDING SCOOTER



Color Choice



Jazzy®
ZERO TURN

4-WHEEL SCOOTER



Patent-pending, intelligent turning
iTURN™
TECHNOLOGY

Color Choices



INTERCHANGEABLE SHROUDS¹

REVO™ 2.0

ALSO AVAILABLE IN 3-WHEEL



Color Choices



Jazzy®
PASSPORT

FOLDING POWER CHAIR



Color Choice



MID-SIZE LUXURY

VICTORY® LX^{SPORT}

4-WHEEL SCOOTER



VICTORY® 10^{LX} WITH CTS SUSPENSION

4-WHEEL SCOOTER



CTS SUSPENSION

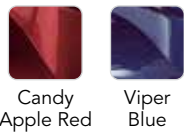


Front Suspension



Rear Suspension

Color Choices



FULL-SIZE LUXURY

PRIDE®
RAPTOR

3-WHEEL SCOOTER



Color Choice



VALUE SERIES

VICTORY® 10.2

ALSO AVAILABLE IN 3-WHEEL



Color Choices



VICTORY® Turn



Color Choices



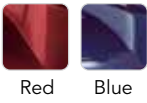
HEAVY-DUTY

MAXIMA

ALSO AVAILABLE IN 4-WHEEL



Included Colors



PURSUIT

ALSO AVAILABLE IN
HD VERSION



Included Colors



PURSUIT^{XL}



Color Choices



WRANGLER



Color Choices

