

Model	Maxima ¹
Part Number	3W: SC900 4W: SC940
Weight Capacity	500 lbs.
Maximum Speed²	Up to 5.3 mph
Ground Clearance⁴	2.5" at motor 2" at anti-tip (3W) 4.5" at side deck (3W) 1.5" at anti-tip (4W)
Turning Radius⁴	3W: 50.5"; 4W: 54"
Overall Length⁴	3W: 46"; 4W: 47"
Overall Width⁴	25.5" (not including seat)
Seat-to-Ground Height	22.5"-24.5"
Seat-to-Deck Height	16"-18"
Front Tires	3" x 10" solid
Rear Tires	4" x 10" solid
Suspension	N/A
Range Per Charge^{2,3}	4W: Up to 16 miles 3W: Up to 18 miles (9.6 miles with power elevating seat)
Total Weight Without Batteries⁶	3W: 171 lbs.; 4W: 176 lbs.
Heaviest Piece When Disassembled⁴	76 lbs. (rear section)
Standard Seating	Type: Deluxe contoured medium-back Weight: 40 lbs. Material: Black Vinyl Dimensions: 22" width, 18" depth
Drive System	Sealed transaxle, 24-volt DC motor
Dual Braking System	Regenerative and electromechanical
Battery Requirements^{5,7}	Size: (2) NF-22 or (2) U-1 (power elevating seat) Weight: 38 lbs. ea (NF-22); 25.4 lbs. ea (U-1)
Battery Charger	Off-board, 5-amp
Warranty	Frame: lifetime limited Drivetrain: 2-year limited Electronics: 2-year limited Battery: 6-months

3W: HCPC Code: K0802 (Group 1, Very Heavy Duty)

4W: HCPC Code: K0808 (Group 2, Very Heavy Duty)

- 1 Pride® FDA Class II Medical Devices are designed to aid individuals with mobility impairments.
- 2 Varies with user weight, terrain type, battery amp-hour (AH), battery charge, battery condition and tire condition. These specifications can be subject to a variance of (+/- 10%).
- 3 Due to manufacturing tolerances and continual product improvement, this specification can be subject to a variance of (+ or - 3%).
- 4 AGM or gel cell type required.
- 5 Tested in accordance with ANSI/RESNA, WC Vol2, section 4 & ISO 7176-4 standards. Results derived from theoretical calculations based on battery specifications and drive system performance. Test conducted at maximum weight capacity.
- 6 Battery weight may vary based on manufacturer.
- 7 Includes standard seat weight.



(US) 800-800-8586 • (Canada) 888-570-1113

pridemobility.com |    

HCPCS codes provided should not be considered as legal advice and do not guarantee reimbursement. DME providers are responsible for determining appropriate billing codes when submitting for insurance reimbursement.

The information contained herein is correct at time of publication; we reserve the right to alter specifications without prior notice.

NOTE: All specifications subject to change without notice. The information contained herein is correct at the time of publication; we reserve the right to alter specifications without prior notice. Speed and range vary with user weight, terrain type, battery charge, battery condition and tire pressure. Due to manufacturing tolerances and continual product improvement, length, width, turning radius and ground clearance can be subject to variance of + or - 3%. Special order seats or non-standard dimensions will not be fold-flat and depth-adjustable.

MAXIMA_090920

MAXIMA¹

ULTRA HEAVY-DUTY FOR MAXIMUM PERFORMANCE



FDA Class II Medical Device¹

LIVE YOUR BEST[®]

pridemobility.com |    

HEAVY-DUTY PERFORMANCE



Front headlight on tiller



Easily adjustable tiller

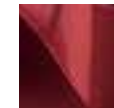
The **Maxima** scooter features an ultra heavy duty drivetrain and a large, deep seat to deliver maximum performance at an exceptional value. Engineered with the bariatric market in mind, the Maxima features a weight capacity of 500 lbs., a max speed up to 5.3 mph, adjustable tiller and an ergonomically enhanced design.

- Durable and stylish rear bumper
- Easily accessible tie down points (for transport of unoccupied scooter)
- Easily adjustable tiller
- Full lighting package with headlight and directional signals
- Pride's exclusive black, flat-free, non-scuffing tires
- Seat designed for extreme comfort
- Standard front basket
- Ultra heavy-duty drivetrain with 120-amp controller
- User-friendly console

Available Colors



Viper Blue



Candy Apple Red

Optional Seating and Accessories

- Deluxe contour high-back seat
18" x 18", 22" x 18"

Required Options

- Cane/crutch holder (single, double)
- Oxygen tank holder
- Power elevating seat*
- Rear basket
- Safety flag

*Available on the 3-wheel Maxima only. Actuator will raise a total of 5" from top to bottom. At 1" of elevation, the speed is reduced to 50% and is lowered to zero (0) when fully elevated.