

Euro Seat

Installation Instructions



TABLE OF CONTENTS

SECTION I.

Power Recline Installation	4
----------------------------------	---

SECTION II.

Power Tilt Installation	6
-------------------------------	---

SECTION III.

Power ELR Installation	8
------------------------------	---

SECTION IV.

Comfort Cushion Installation	9
------------------------------------	---

SECTION V.

Swing-away Joystick Installation	11
--	----

SECTION VI.

Accessory Bracket Installation	12
--------------------------------------	----

SECTION VII.

Headrest Installation	14
-----------------------------	----

I. POWER RECLINE INSTALLATION

POWER RECLINE INSTALLATION

Required Tools:

- Wire cutters
- 3/16-in. hex key
- 1/2-in. open-end wrench

Manual Recline Actuator Removal

1. Cut the wire ties securing the brake cable to the seat using the wire cutters.
2. Remove the shoulder bolt, nylon spacers, and the Nylock nut from the top of the manual recline actuator using the hex key and the open-end wrench. See figure 1.
3. Remove the shoulder bolt and Nylock nut from the bottom of the manual recline actuator.
4. Remove the entire manual recline actuator assembly from the seat.



NOTE: Save all hardware as it will be used to mount the power recline actuator.

Brake Lever Removal

1. Remove the button head screws that hold the figure 8 clamp assembly and the brake lever to the armrest. See figure 1.
2. Remove the clamp assembly, the manual actuator lever mount bar, and the brake lever from the armrest.

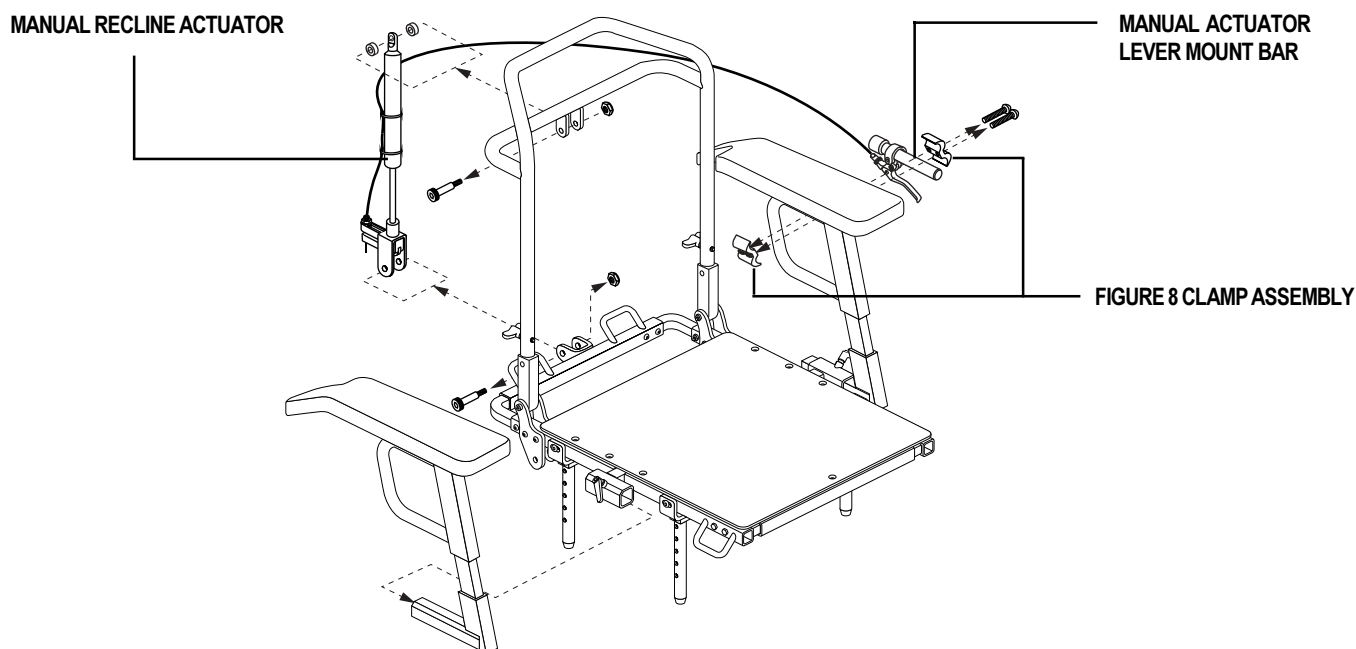


Figure 1. Manual Recline Actuator/Brake Lever Removal

I. POWER RECLINE INSTALLATION

Power Recline Actuator Installation

1. Install the power recline actuator with the motor on top and facing to the right as shown in figure 2.
2. Insert one of the original shoulder bolts through the mounting clevis at the base of the chair and through the long neck of the power recline actuator. Secure the bolt with a Nylock nut.
3. Position the top of the power recline actuator between the mounting clevis at the top of the seatback. Insert the other shoulder bolt through the mounting clevis. Secure the bolt with the remaining Nylock nut.

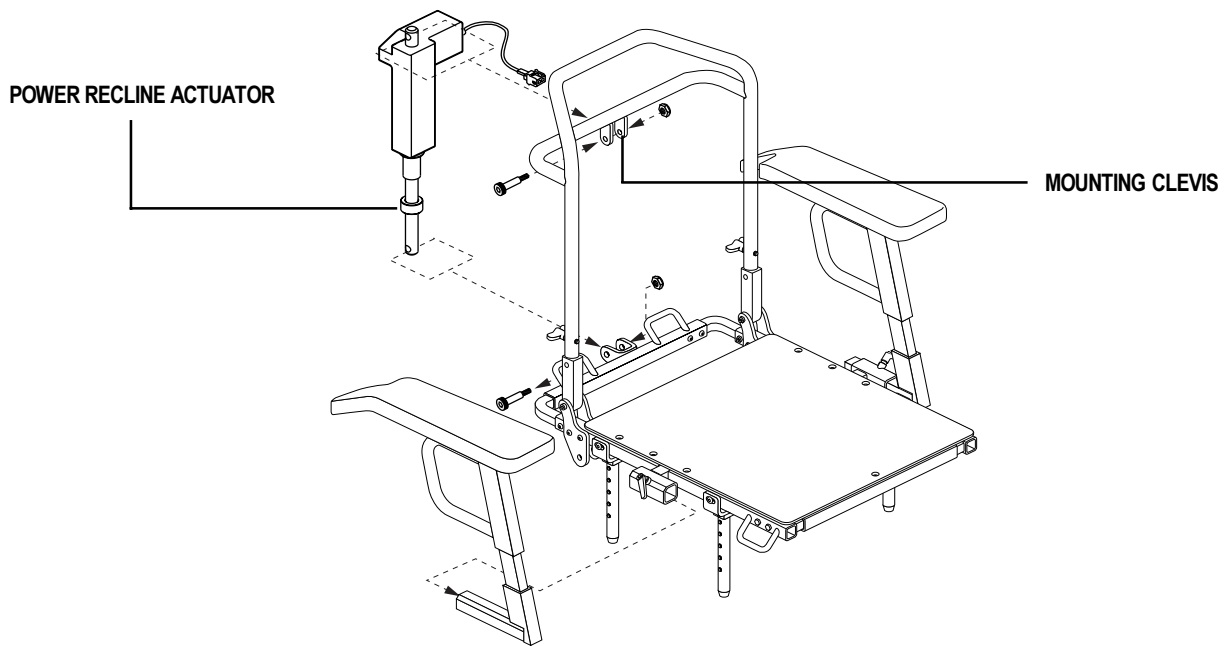


Figure 2. Power Recline Actuator Installation

II. POWER TILT INSTALLATION

POWER TILT INSTALLATION

Required Tools:

- 3/16-in. hex key
- 1/2-in. open-end wrench

Additional Hardware:

- 5/16-in. x 3/4-in. socket flat head screw (4)
- 5/16-in. Nylock jam nut (4)
- 5/16-in. x 1 1/2-in. shoulder bolt (4)
- 5/16-in. Nylock nut (4)

1. Remove the ball detent pins that secure the seat post towers to the power base. See figure 3.
2. Remove the seat from the power base by lifting it straight up. The seat post towers will slide free of the seat mount connectors on the power base. See figure 3.
3. Using the hex key and the open-end wrench, remove the button head screws and the Nylock nuts that secure the L-brackets to the seat base. Remove the L-brackets and towers from the seat base. See figure 4.
4. Using the hex key, remove each of the button head screws that secure the L-brackets to the towers. Remove the L-brackets from the towers. See figure 4.

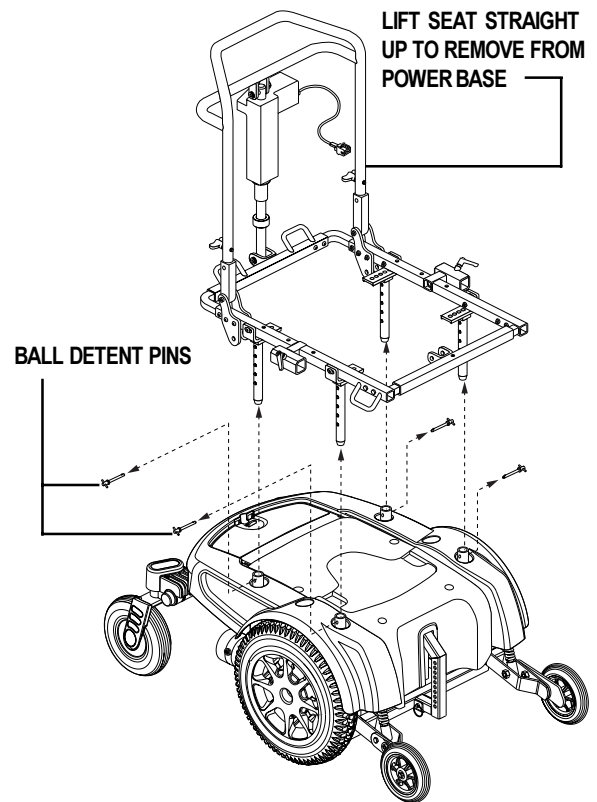


Figure 3. Seat Removal

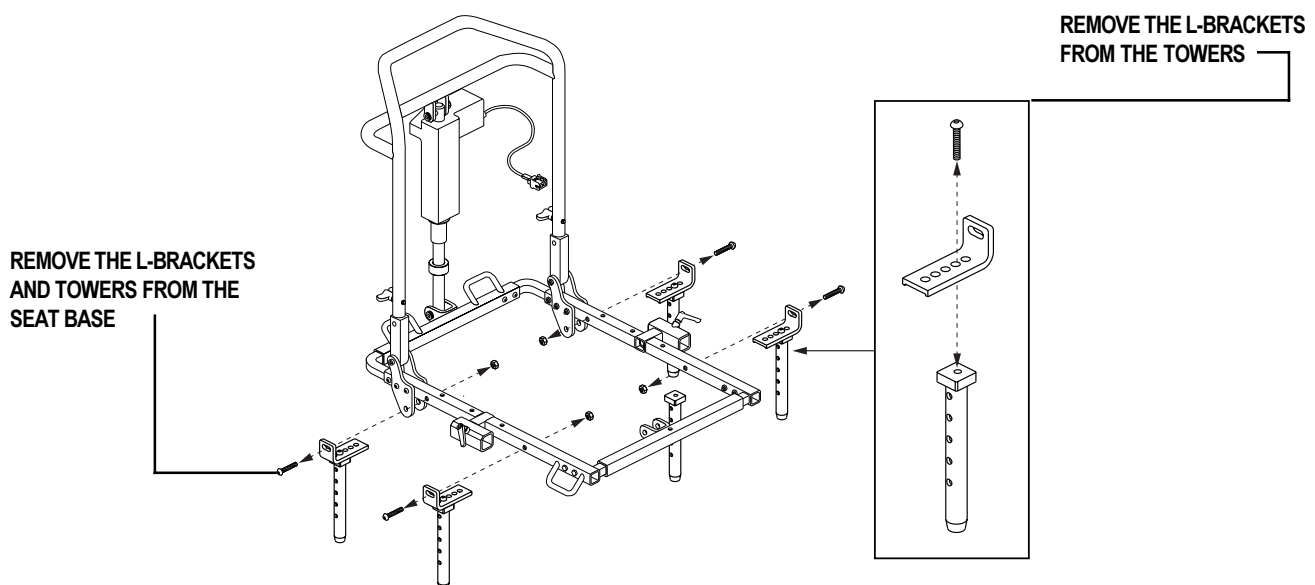


Figure 4. L-bracket/Tower Removal

II. POWER TILT INSTALLATION

5. Mount the two tilt pivot lugs to the tilt base using the four (4) socket flat head screws and the four (4) Nylock jam nuts. Tighten the hardware using the hex key and the open-end wrench. See figure 5.



NOTE: The thick, rounded end of each tiller pivot lug gets mounted toward the outside of the tilt base.

6. Mount the seat post towers to the outside holes of the tilt base using the original hardware (four button head screws). The L-brackets should not be secured to the towers. See figure 5.
7. Place the seat frame over the tilt base. The pivot brackets located at the rear of the seat frame slide over the thick, rounded ends of the tilt pivot lugs. See figure 5.
8. Secure the seat frame to the tilt base using two (2) of the 5/16-in. x 1 1/2-in. shoulder bolts and Nylock nuts; one for each side of the seat. Insert the shoulder bolts through the pivot brackets and tilt pivot lugs and secure with the Nylock nuts. See figure 5.
9. Mount the power tilt actuator with the cylindrical motor facing forward and to the right. Secure both ends of the actuator with the remaining 5/16-in. x 1 1/2-in. shoulder bolts and Nylock nuts. The long neck of the actuator mounts to the clips located on the tilt base actuator tube. The base of the actuator mounts to the mounting clevis located on the front rail weldment. See figure 5.
10. Connect the tilt base to the power base by sliding the seat post towers straight down into the seat mount connectors and securing the towers with the ball detent pins.

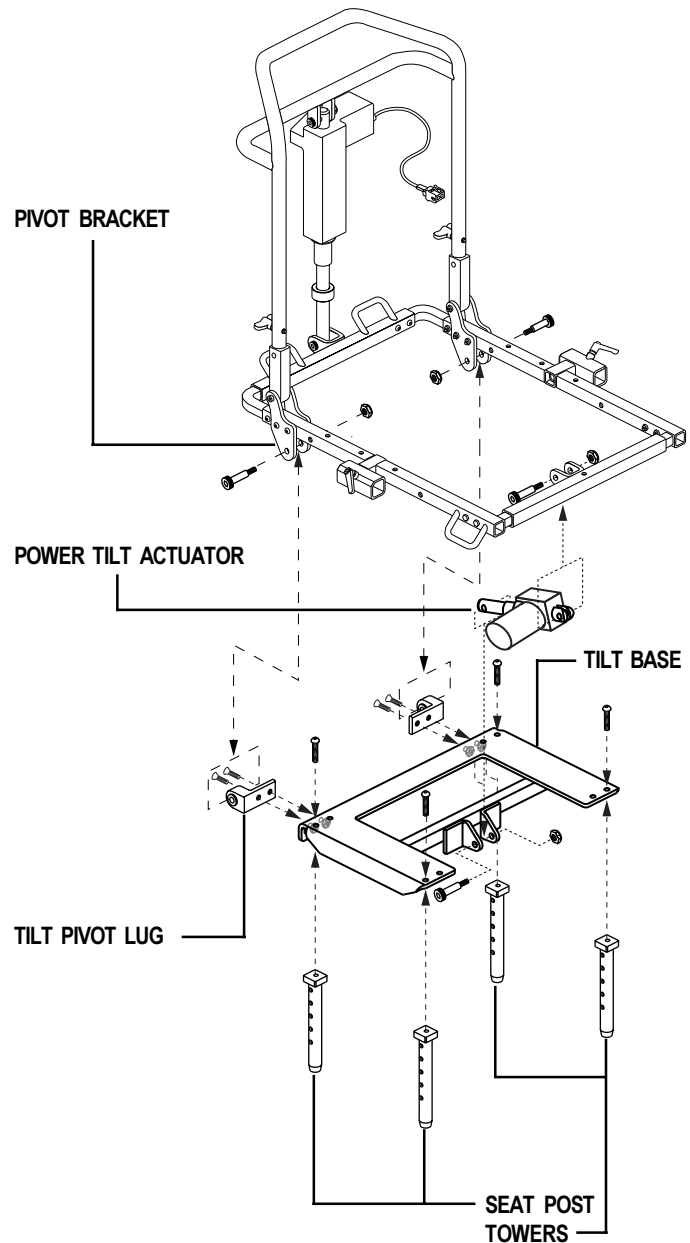


Figure 5. Power Tilt Installation

III. POWER ELR INSTALLATION

POWER ELR INSTALLATION

Required Tools:

- 3/16-in. hex key
- 1/8-in. hex key
- 1/2-in. open-end wrench

Additional Hardware:

- 5/16-in. x 1 1/2-in. button head screw (4)
- 5/16-in. Nylock nut (4)

1. Loosen the setscrew located underneath the side rail weldment on either side of the chair using the 1/8-in. hex key. See figure 6.
2. Slide one heavy duty hanger into each side rail weldment to the appropriate length.
3. Install the four (4) button head screws and four (4) Nylock nuts that secure the hangers to the side rail weldments using the 3/16-in. hex key and 1/2-in. open-end wrench.
4. Tighten the setscrew on either side of the chair.
5. Slide the power ELR into the heavy duty hanger.



NOTE: For seats already equipped with heavy duty hangers, simply slide the power ELR into the hanger to install.

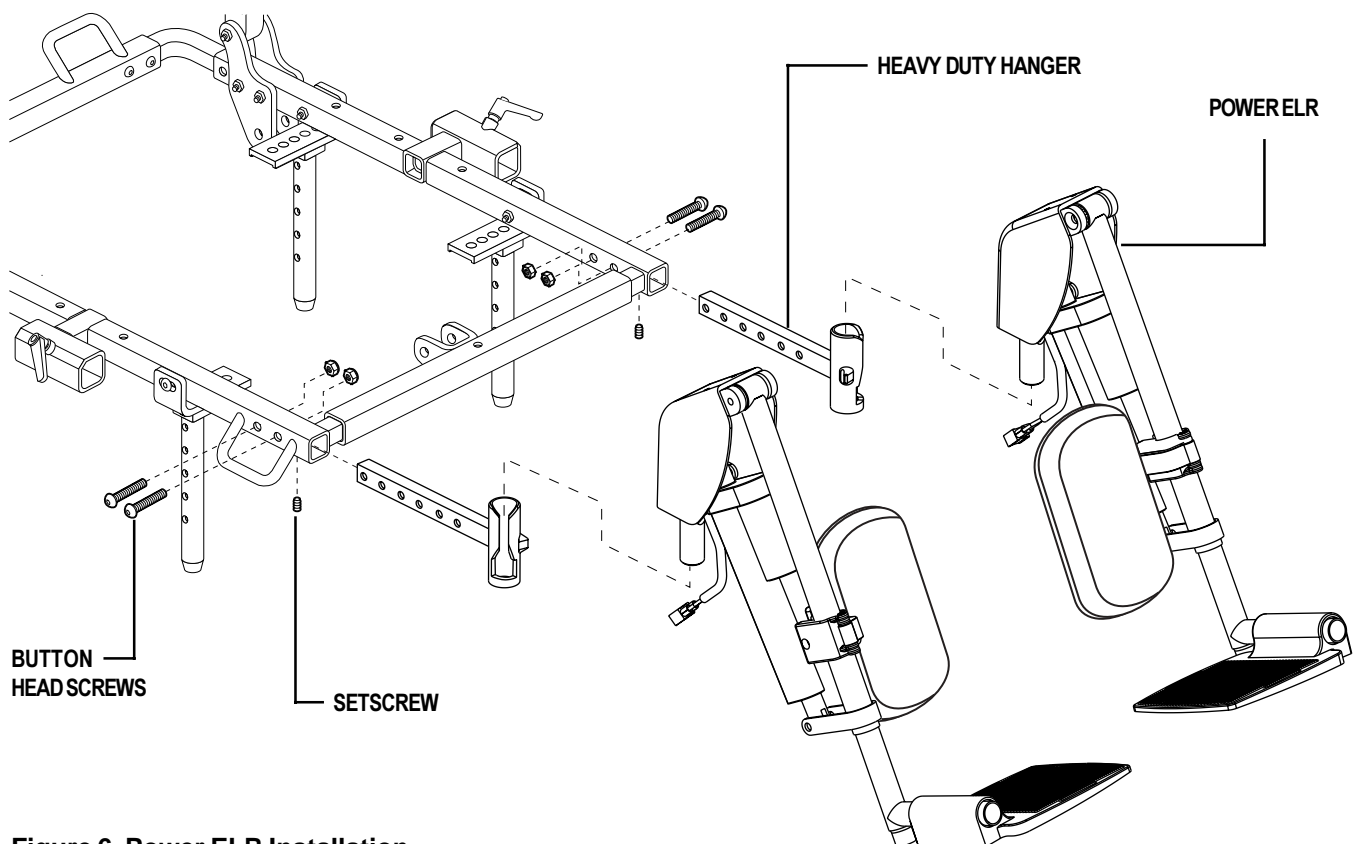


Figure 6. Power ELR Installation

IV. COMFORT CUSHION INSTALLATION

COMFORT CUSHION INSTALLATION

Required Tools:

- 5/32-in. hex key
- 7/16-in. open-end wrench
- Phillips screwdriver

Additional Hardware:

- 1/4-20 x 2-in. button head screw (3)

Seat Base Installation

1. Remove the three (3) socket flat head screws and three (3) Nylock nuts that secure the plastic seat pan to the side rail weldments using the 5/32-in. hex key and 7/16-in. open-end wrench. See figure 7.
2. Remove the plastic seat pan from the seat.
3. Lean the seat back so that you can access the bottom of the seat.
4. Install the comfort cushion seat base with the three (3) button head screws using the 5/32-in. hex key. One screw mounts through each side rail weldment, and the third screw mounts through the front rail weldment. See figure 8.

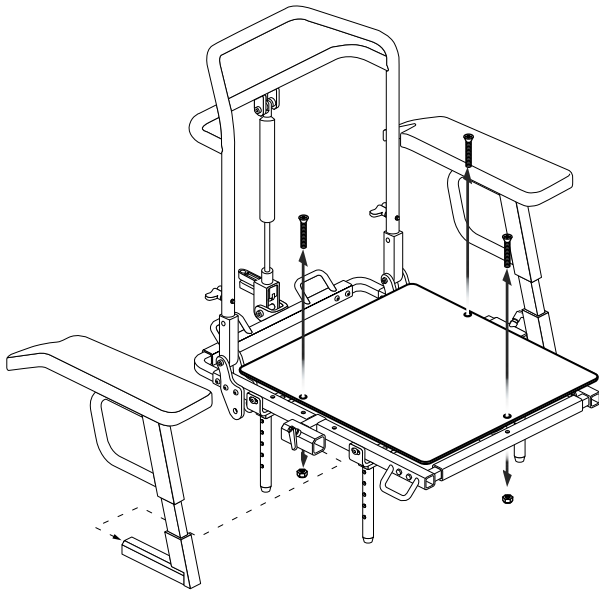


Figure 7. Remove the Plastic Seat Pan

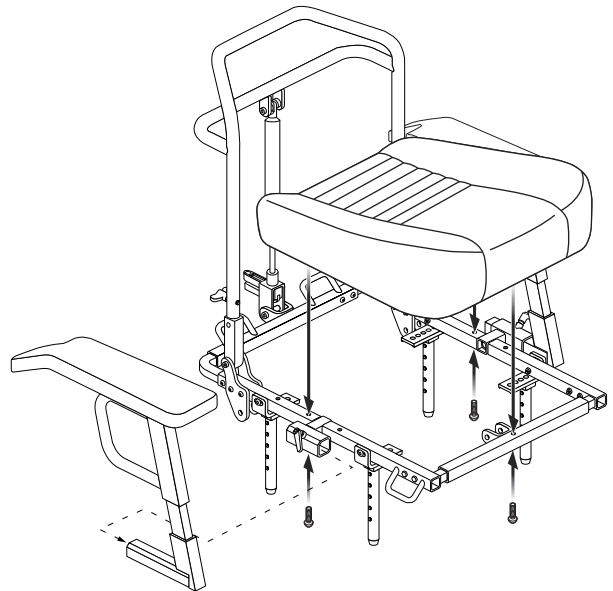


Figure 8. Install the Comfort Cushion Seat Base

IV. COMFORT CUSHION INSTALLATION

Slingback Removal

1. Loosen the wing nuts located on each back cane.
2. Remove the Phillips pan head screws that secure the slingback to the back canes. See figure 9.
3. Remove the shoulder bolt, nylon spacers, and Nylock nut from the top of the actuator. See figure 9.
4. Slide the entire seatback up and off of the seat. See figure 9a.
5. Slide the slingback off of the back canes.
6. Reinstall the seatback using the Phillips pan head screws and wing nuts.
7. Tighten the wing nuts.
8. Reinstall the shoulder bolt, nylon spacers, and Nylock nut to the top of the actuator.

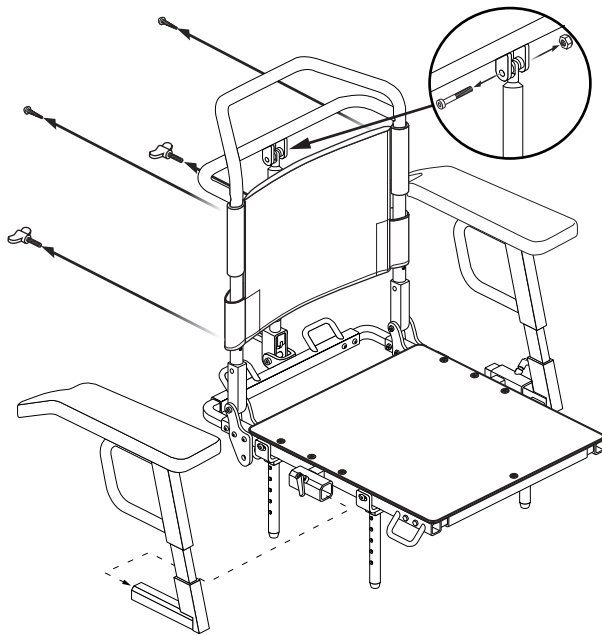


Figure 9. Slingback Removal

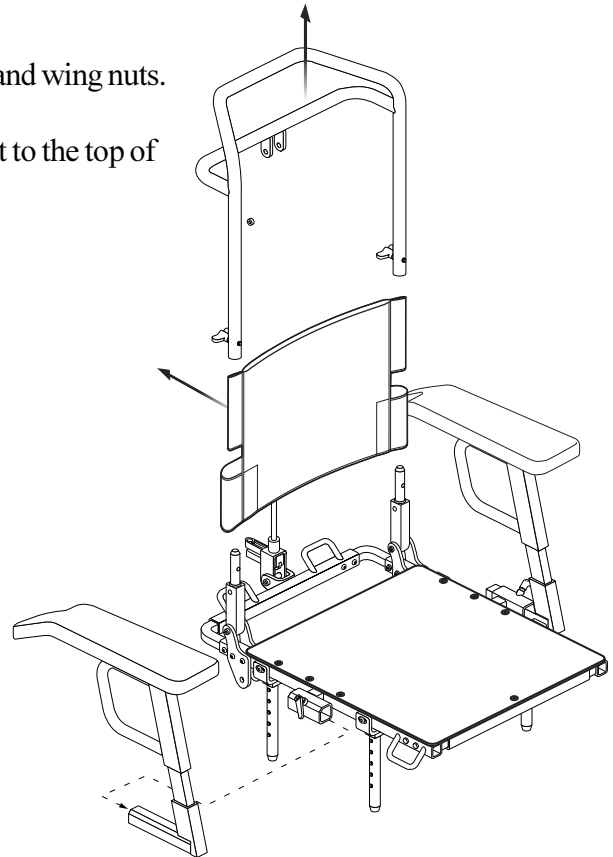


Figure 9a. Slingback Removal

Seatback Installation

The comfort cushion seatback comes equipped with four (4) clips that simply snap on to the back canes. See figure 10.

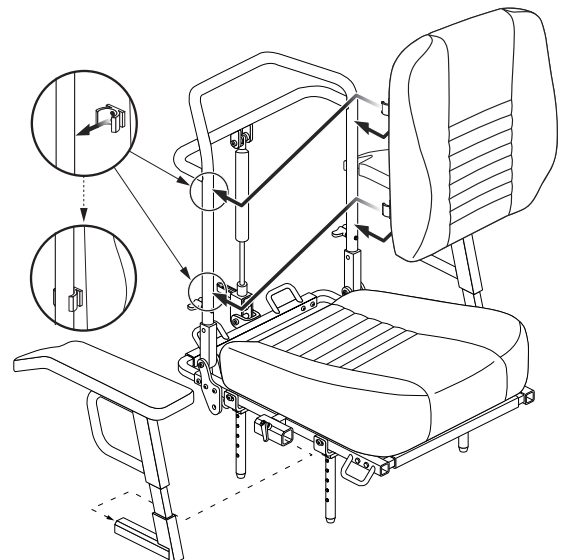


Figure 10. Install Comfort Cushion Seatback

V. SWING-AWAY JOYSTICK INSTALLATION

SWING-AWAY JOYSTICK INSTALLATION

Required Tools:

- 5/32-in. hex key

1. Loosen the two (2) button head screws on the figure 8 clamp assembly located on the armrest.
2. Slide the joystick free of the loosened clamp assembly. See figure 11.
3. Slide the swing-away joystick mount into the clamp assembly. See figure 11a.
4. Tighten the button head screws to secure the swing-away joystick mount to the armrest. See figure 11b.

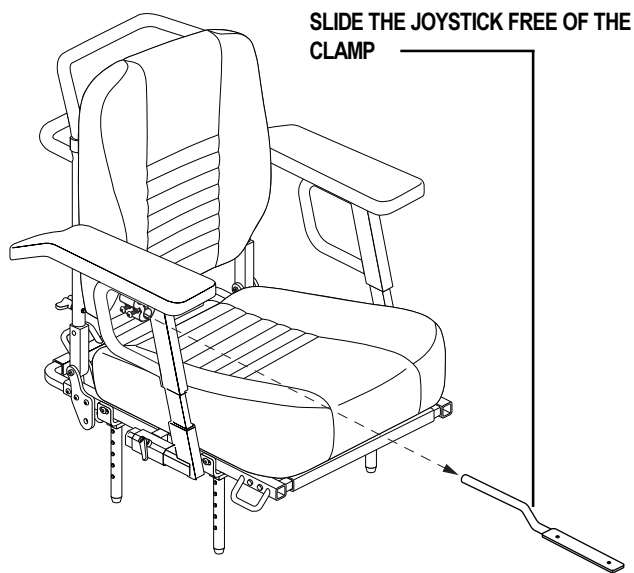


Figure 11. Joystick Removal

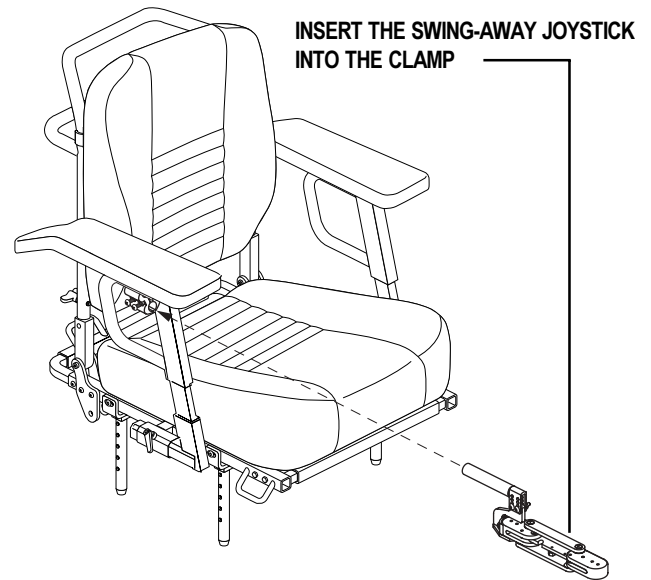


Figure 11a. Swing-away Joystick Installation

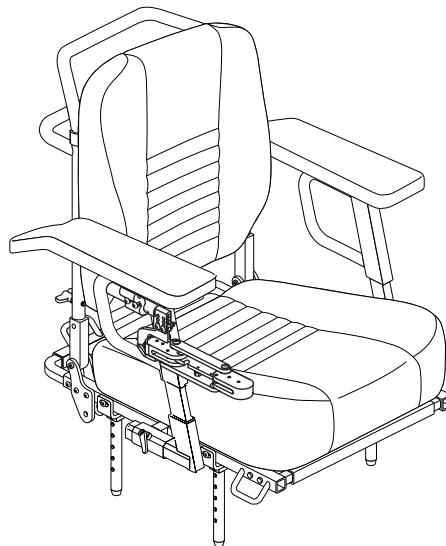


Figure 11b. Mounted Swing-away Joystick

VI. ACCESSORY BRACKET INSTALLATION

ACCESSORY BRACKET INSTALLATION

Required Tools:

- 3/16-in. hex key
- 1/2-in. open-end wrench

Additional Hardware:

- 5/16-in. x 2-in. button head screw (1)
- Black nylon spacer (2)
- 5/16-in. Nylock jam nut (1)

1. Remove the button head screw and Nylock jam nut from the rearmost part of the pivot bracket at the base of the seatback cane. See figure 12.
2. Mount the accessory bracket from the underside of the seat frame and slide the mounting plates of the bracket over the pivot bracket. See figure 12a.
3. Reinstall the button head screw and Nylock jam nut to secure the accessory bracket to the pivot bracket and the seat. See figure 12a.

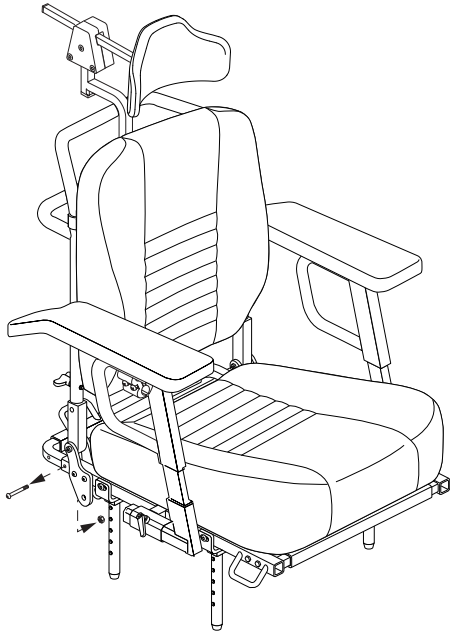


Figure 12. Hardware Removal

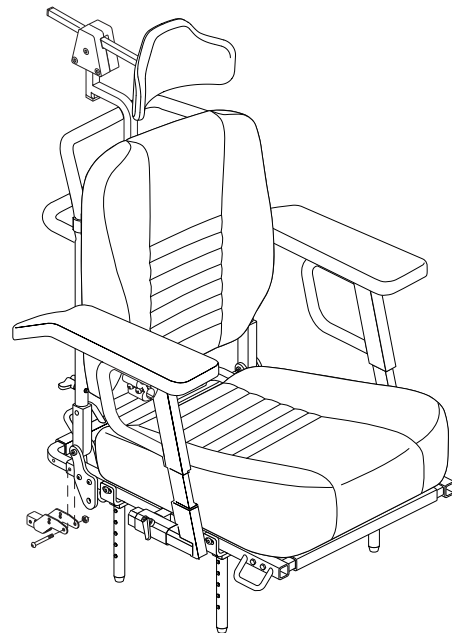


Figure 12a. Mount the Accessory Bracket

VI. ACCESSORY BRACKET INSTALLATION

4. Line up the holes in the accessory bracket with those in the side rail weldment.
5. Insert the two (2) black nylon spacers between the bracket and the side rail on either side of the side rail, then install the additional button head screw. Secure the screw with the Nylock jam nut. See figure 12b.

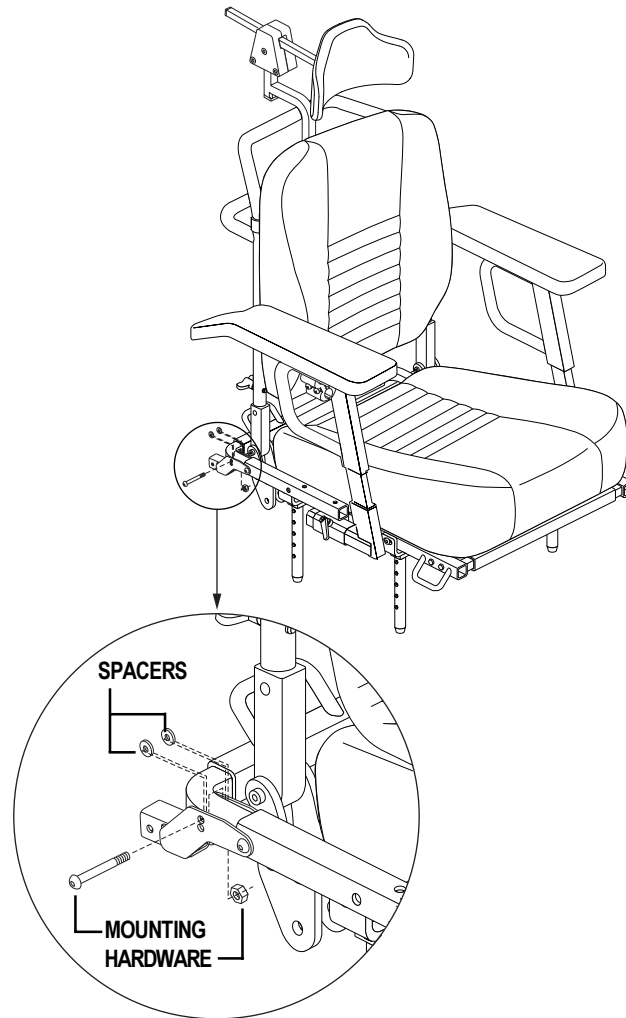


Figure 12b. Securing the Accessory Bracket

VII. HEADREST INSTALLATION

HEADREST INSTALLATION

Required Tools:

- 5/32-in. hex key
- 1/8-in. hex key
- 3/16-in. hex key

Additional Hardware:

- 1/4-20 x 3/4-in. button head screw (2)
- 1/4-20 x 1/2-in. button head screw (2)
- 1/4-20 x 1/4-in. setscrew (2)

1. Mount the headrest bracket to the adjustment bar on the seatback. The curved plate snaps onto the bar from the inside with the smaller side of the plate on top. See figure 13.
2. Align the flat bracket plate to the curved plate. The four holes on the flat bracket plate should be mounted up.
3. Install the 1/4-20 x 1/2-in. button head screws to the top row of holes in the headrest bracket. Tighten using the 5/32-in. hex key.
4. Install the 1/4-20 x 1/4-in. setscrews to the middle row of holes in the headrest bracket. Tighten using the 1/8-in. hex key.
5. Align the headrest adjustment lever bracket to the headrest bracket. Secure the adjustment lever bracket to the headrest bracket by inserting the 1/4-20 x 3/4-in. button head screws through the adjustment lever bracket and into the bottom row of holes in the headrest bracket. See figure 13.

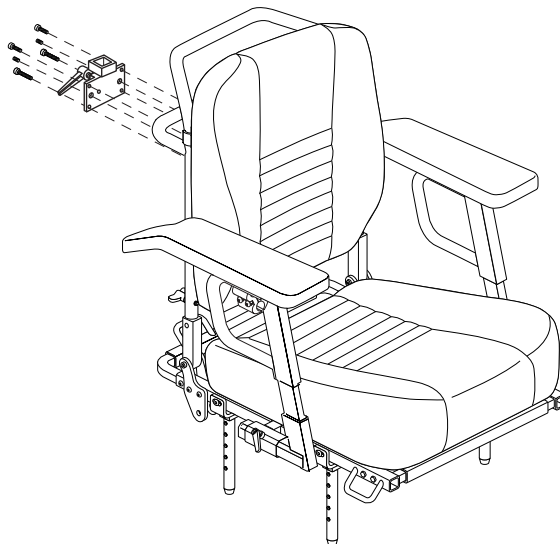


Figure 13. Mounting the Headrest Bracket

VII. HEADREST INSTALLATION

6. Slide the headrest receiver rod through the assembled headrest bracket and tighten the lever to secure the rod at the appropriate height. See figure 13a.
7. Loosen the three (3) socket head cap screws in the triangle block at the top of the headrest receiver rod using the 3/16-in. hex key. See figure 13b.
8. Slide the headrest mounting rod through the loosened triangle block to the appropriate length, and then retighten the socket head cap screws. See figure 13b.

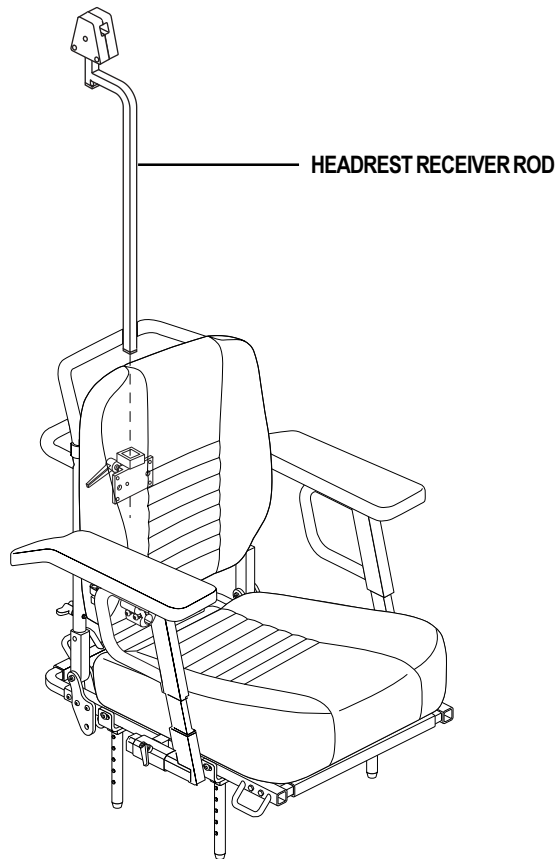


Figure 13a. Mounting the Headrest Receiver Rod

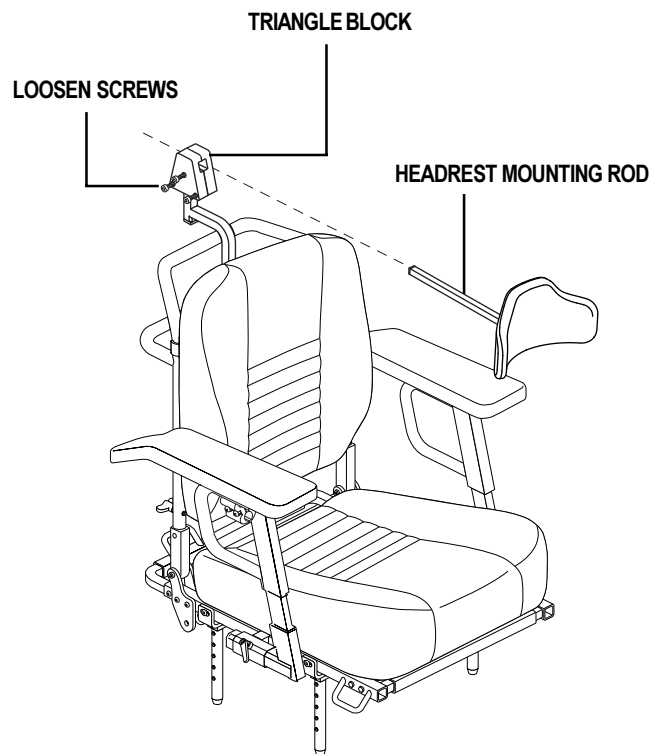


Figure 13b. Mounting the Headrest



Pride Mobility Products Corporation
182 Susquehanna Avenue
Exeter, PA 18643
USA

Pride Mobility Products Company
380 Vansickle Road Unit 350
St. Catharines, Ontario L2R 6P7
Canada

Pride Mobility Products Ltd.
Unit 106, Heyford Park Camp Road
Upper Heyford, Oxfordshire OX25 5HA

Pride Mobility Products Australia Pty. Ltd.
21 Healey Road
Dandenong, 3175
Victoria, Australia

Pride Mobility Products Italia s.r.l.
Via della Tecnica, 14
Prato della Corte
00065 Fiano Romano
Roma - Italia

Pride Mobility Products Europe B.V.
Tijmuiden 28
1046 AL Amsterdam
The Netherlands