



Quick Reference



2 Point PRO Mounting Hardware

For Aluminum & Carbon Series Back Supports

Stealth Products strives for 100% customer satisfaction. Your complete satisfaction is important. Please contact us with feedback or suggested changes that will help improve the quality and usability of these products. You may reach us at:

104 John Kelly Drive, Burnet, TX 78611

Phone: (512) 715-9995 Toll Free: 1 (800) 965-9229

Fax: (512) 715-9954 Toll Free: 1 (800) 806-1225

info@stealthproducts.com www.stealthproducts.com

General

Read and understand all instructions prior to the use of the product. Failure to adhere to instructions and warnings in this document may result in property damage, injury, or death. Product misuse due to failure of the following instructions will void the warranty.

Immediately discontinue use if any function is compromised, parts are missing, loose, or shows signs of excessive wear. Consult with you supplier for repair, adjustment, or replacement.

If this document contains information you do not understand, or there are concerns about safety or operation, contact your supplier.

Important Information!

All persons responsible for fitting, adjustment, and daily use of the devices discussed in these instructions must be familiar with and understand all safety aspects of the devices mentioned. In order for our products to be used successfully, you must:

- Read and understand all instructions and warnings.
- Maintain our products according to our instructions on care and maintenance.
- Devices should be installed and adjusted by a trained technician.

Ordering Documentation

You can download additional copies of this User & Installation Manual on the Stealth website: www.stealthproducts.com

REF

P116D237R1

Document #237 Revision 1

Monday, November 23, 2015

Copyright ©2015 Stealth Products, LLC

All rights reserved.

Published by Stealth Products, LLC

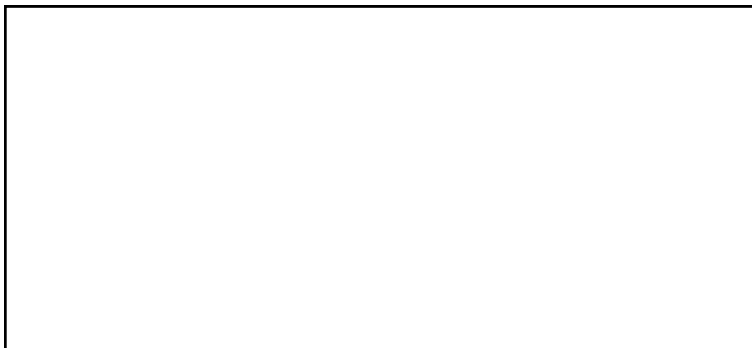
Installation Date: _____

Dealer: _____

Dealer Stamp:



Serial Number:



For UK warranty claims, please contact:



MDSS GmbH
Schiffgraben 41
30175 Hannover, Germany



The ADI Backs are designed and produced to the highest of standards. Our ADI Back is guaranteed to be free of defects in material and workmanship for a period of 24 months. If any defect in material or workmanship is found, Stealth Products will repair or replace, at our discretion, the ADI Back. This warranty does not apply to backs abused or misused by the user and deemed such by Stealth Products, LLC.

Claims and repairs should be processed through the nearest Stealth Products Provider.

4.1 Warranty Exclusions

This warranty does not extend to those items which may require replacement due to normal wear and tear:

- Outer covers
- Inner covers
- Circumstances beyond the control of Stealth
- Labor, service calls, shipping, and other charges incurred for repair of the product, unless specifically authorized, IN ADVANCE, by Stealth Products, LLC.
- Repairs and/or modifications made to any part without specific consent from Stealth.

Exclusions also include components with damage caused by:

- Exposure to moisture




NOTICE

Any substitutions of supplied hardware void the warranty. Misuse of items and "acts of nature" (ex. Flood, tornado, etc.) are not covered by the warranty.

1.0 Customer Satisfaction.....	i
2.0 Important Information.....	ii
3.0 Introduction.....	iii
4.0 Warranty.....	iv
4.1 Warranty Exclusions.....	iv
5.0 Table of Contents.....	v
6.0 Warning Labels.....	vi
6.1 Warning Labels.....	vi
6.2 Limited Liability.....	vi
6.3 Testing.....	vi
7.0 Parts and Accessories.....	vii
7.1 Tools Required for Installation & Adjustment.....	vii
7.2 Parts Required.....	vii
7.3 2-Point PRO Mounting Hardware Assembly.....	vii
7.4 2-Point PRO Torque Specification.....	viii
8.0 Installation Instructions.....	1
8.1 Hardware Installation.....	1
8.2 Angle Adjustment.....	3
8.3 Depth Adjustment.....	3
8.4 Width Adjustment.....	3
9.0 First Time Use.....	4
9.1 Dealer Assistance.....	4
9.2 User Testing.....	4
9.3 Conditions of Use.....	4
10.0 Maintenance.....	5
10.1 Cleaning.....	5
10.2 Disinfection.....	5

6.1 Warning Labels

Warnings are included for the safety of the user, client, operator and property. Please read and understand what the signal words **SAFETY**, **NOTICE**, **CAUTION**, **WARNING** and **DANGER** mean, how they could affect the user, those around the user, and property.

 DANGER	Identifies an imminent situation which (if not avoided) will result in severe injury, death, and property damage .
 WARNING	Identifies a potential situation which (if not avoided) will result in severe injury, death, and property damage .
 CAUTION	Identifies a potential situation which (if not avoided) will result in minor to moderate injury, and property damage .
NOTICE	Identifies important information not related to injury, but possible property damage .
SAFETY	Indicates steps or instructions for safe practices, reminders of safe procedures, or important safety equipment that may be necessary.

6.2 Limited Liability

Stealth Products, LLC accepts no liability for personal injury or damage to property that may arise from the failure of the user or other persons to follow the recommendations, warnings, and instructions in this manual.

6.3 Testing

Initial setup and driving should be done in an open area free of obstacles until the user is fully capable of driving safely.

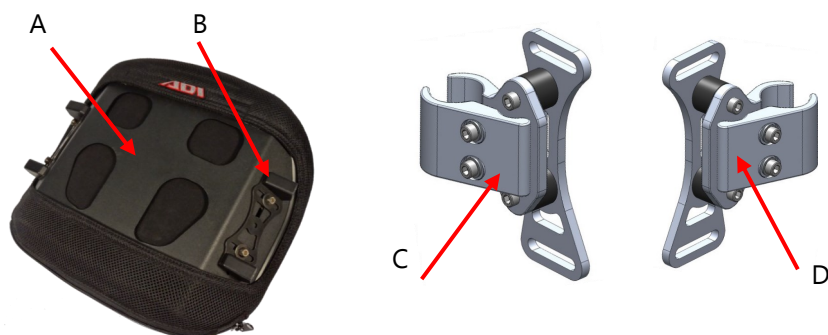
The product should always be tested without any person sitting in the wheelchair until every alteration of the physical installation or adjustment is complete.

7.1 Tools Required for Installation & Adjustment

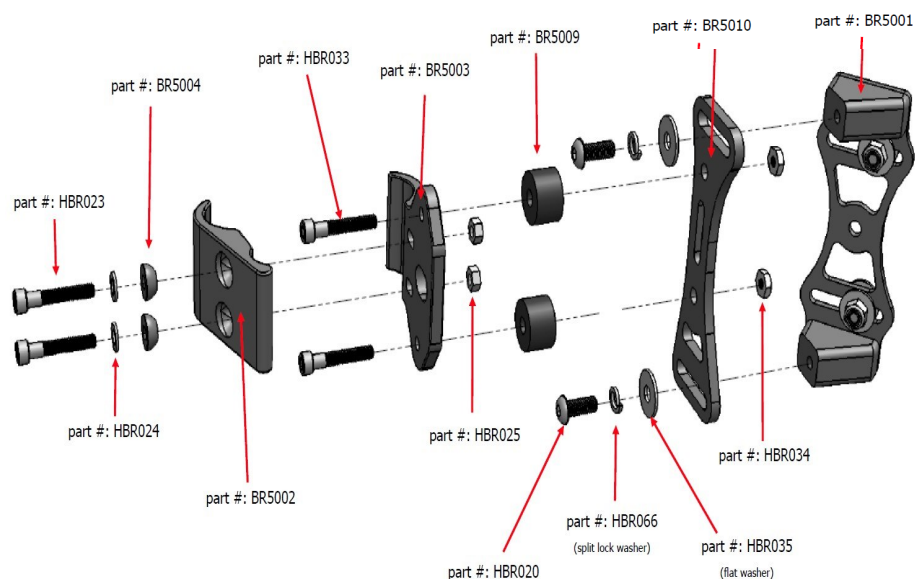
- 4mm allen wrench
- 10mm wrench

7.2 Parts Required

- Back Support Shell, 1 each (A)
- U-Block Assembly, 2 each (BR1104 attached to back) (B)
- Left Side 2 Point PRO Clamp Assembly, 1 each (BR1103L) (C)
- Right Side 2 Point PRO Clamp Assembly, 1 each (BR1103R) (D)



7.3 2 Point PRO Mounting Hardware Assembly



7.4 2 Point PRO Torque Specification

Part Number: HBR020

M6 x 20mm Button Head SS

Use: 4mm Drive allen wrench

Torque Spec: 77.0 in-lbs/ 8.7N-m

Part Number: HBR033

M6 x 30mm Low Socket Cap Screw 18-8S/S

Use: 4mm Drive allen wrench

Torque Spec: 31.7 in-lbs/3.6N-m



Part Number: HBR022 (for 3/4" or 7/8" tubing)

M5 -.8 x 22mm, Socket C/S

Use: 4mm Drive allen wrench

Torque Specs: 45.1 in-lbs/5.1 N-m



Part Number: HBR023 (for 7/8" & 1" tubing)

M5 -.8 x 25mm, Socket C/S

Use: 4mm Drive allen wrench

Torque Specs: 45.1 in-lbs/5.1N-m

AL & CF Series Backs

Part Number: BR5001

Stud Plate

Use: 10mm hex socket or wrench

Torque Spec: 117 in-lbs/ 13.2 N-m

NOTICE

Only use the hardware supplied with the ADI back on the ADI back. Do not substitute any other screws, brackets, or clamps. Use of alternative hardware or mounting brackets void all warranties.

8.1 Hardware Installation

1. Remove the existing wheelchair back according to the original manufacturer's instructions.
2. Visually determine the desired height of the back support.
3. Mark on the wheelchair back posts the desired location of mounting hardware.
4. Attach mounting hardware to the left and right side of the wheelchair back post tubing.

Step 2



Step 3



Step 4



5. Attach the 2 Point PRO mounting hardware to the wheelchair back posts. Mounting hardware should be equal heights on the left and right sides, and parallel to the seat frame.
 - Loosen the clamp screws with a 4mm hex wrench.
 - Attach and align mounting hardware to the wheelchair back post.
 - Tighten clamp screws, but allow for movement so you can adjust when attaching to U-Blocks.



NOTICE

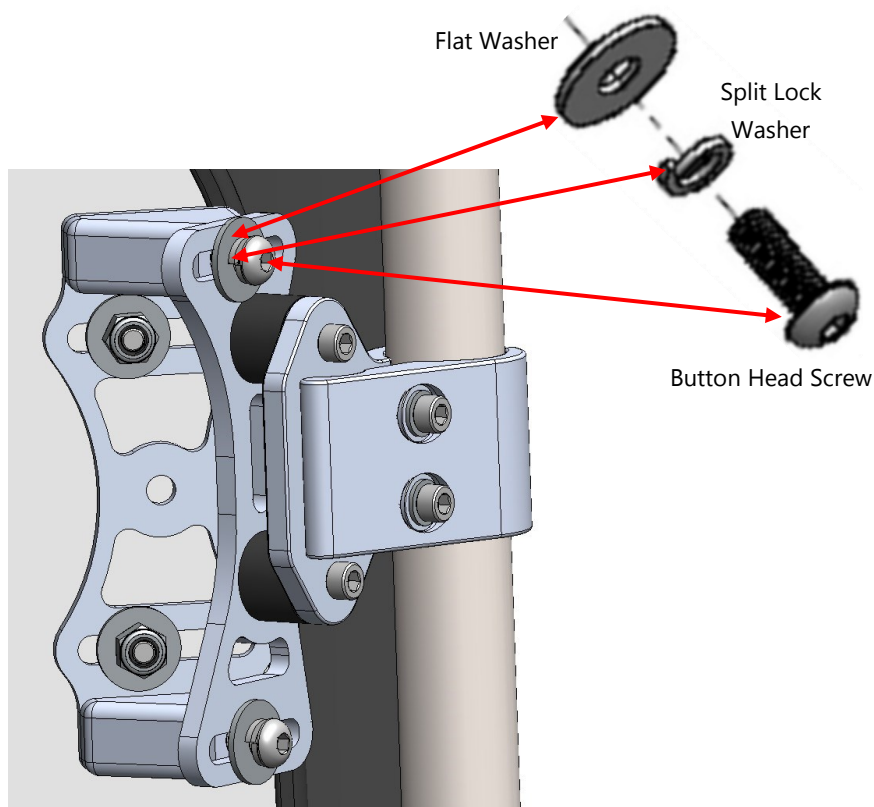
Clamp assembly should be rotated out slightly. Do not tighten completely at this stage.

6. Attach each side mounting hardware to left and right side U-Block with the 4 m6 screws with flat washers and split lock washer as shown.

NOTICE

It is essential that the included split lock washers (HBR066/4 each) and flat washers (HBR035/4 each) be used at all four attachment points to maintain desired angle and depth adjustment of back.

7. Adjust angle and depth to desired user preferences.
8. After final adjustment is complete, tighten all screws to the proper torque specification. This will ensure secure placement and safe operation.

**⚠ CAUTION**

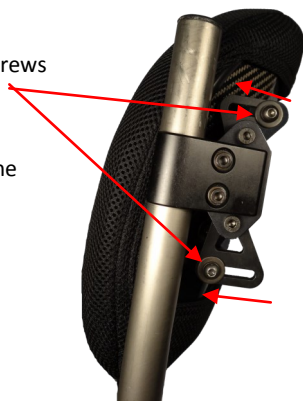
If you are able to fold the back canes, the back should be in the folded position when transporting the wheelchair, especially before loading for air travel.

8.2 Angle Adjustment

1. On each side of the hardware, loosen the top and bottom screws with a 4mm allen wrench.
2. Adjust back support to achieve desired user angle.
3. After final adjustments are complete, tighten all screws to the proper torque specification.

⚠ WARNING

Protect all backs from blunt forces that may cause damage and/or breakage.



8.3 Depth Adjustment

1. On each side of the hardware, loosen the top and bottom screws with a 4mm allen wrench.
2. Slide back support forward or aft to achieve desired users depth.
3. After final adjustments are complete, tighten all screws to the proper torque specification.

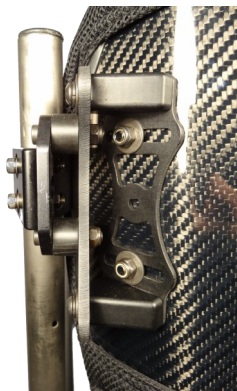


8.4 Width Adjustment

1. Remove fabric cover from back support.
2. On each side of the hardware, loosen the top and bottom screws using a 4mm allen wrench and a 10mm wrench.
3. Adjust hardware inward or outward to achieve required mounting hardware width.
4. After final adjustments are complete, tighten all screws to the proper torque specification.

⚠ CAUTION

When positioning an ADI back, the interior portion of the back support should be positioned to make a contact at the PSIS to provide optimal pelvic support and trunk control.



Dealer Assistance

9.1

During first time use by the client, it is advised that the dealer or service technician assists and explains the set-up to the customer (the user and/or the attendant). If needed, the dealer can make final adjustments.

CAUTION

ADI backs may not fit every chair. Please consult your clinician or supplier providing your equipment.

CAUTION

Do not attach the ADI backs with the user in the chair.

User Testing

9.2

It is important that the customer is fully aware of the installation, how to use it, and what can be adjusted in order to gain as much mobility as possible. As a dealer, proceed as follows:

- Explain and show the customer how you have executed the installation, and explain the function of the hardware.
- If needed, adjust the hardware to the proper position.
- Explain to the customer possible problems and how to address them.

CAUTION

Do not use ADI backs during vehicle transportation.

Conditions of Use

9.3

The ADI hardware is intended for use as installed by the dealer, in accordance to the installation instructions in this manual.

- The foreseen conditions of use are communicated by the dealer or service technician to the user and/or attendant during the first time use.
- If the usage conditions change significantly, please contact your dealer or a qualified service technician to avoid excessive wear and tear or unintended damage.

10.1 Cleaning

Use a soft cloth to clean the back shell.

- Hand wash the foam pad cover with mild, soapy water or detergent and let dry.
- Foam pad should NOT get wet.

⚠ WARNING Do NOT hand wash in water temperatures above 160°F (70°C).

⚠ CAUTION

Institution **MUST** clean and disinfect product between multiple patient uses.

⚠ WARNING Do NOT wash or machine dry.

10.2 Disinfection

- Wipe gently with a cloth dampened with a household disinfectant.
- Allow foam to air dry thoroughly.

⚠ WARNING Do NOT immerse the foam in water.

SAFETY

Always check all mounting hardware, making sure each fastener is properly tightened before using the back support.

⚠ WARNING 250lbs. (113.40 kg) user weight limit.

NOTICE

Altering an ADI back in any way and/or improper installation will void the warranty.

This image shows a full page of blank white paper with horizontal ruling lines. The lines are evenly spaced and run across the width of the page, providing a template for writing or drawing. There are no margins, text, or other markings on the paper.



Stealth Products, LLC. • info@stealthproducts.com • www.stealthproducts.com
+1(800) 965-9229 | +1(512) 715-9995 | 104 John Kelly Drive, Burnet TX 78611

Revision Date 2015-12-23