



Thoracic Support

Chest Straps

Intended Use

The **Stealth Positioning™** line of pelvic belts, vests, chest straps and foot positioners are intended to help wheelchair users attain proper alignment of the torso, pelvis and feet. Comfort, stability and improved clinical posture are achieved through the use of breathable material and structured support.

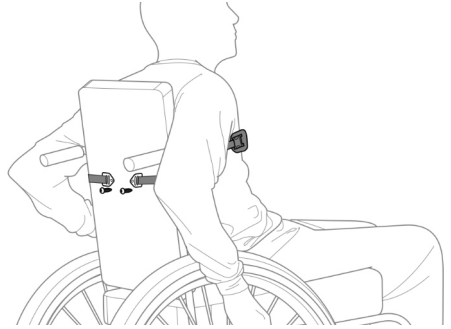
Thoracic positioning impacts proper posture and safety. Thoracic trunk supports are placed in front of the user's torso and are designed to keep the trunk aligned with the back of the seating system. A properly positioned trunk allows for

- Improved respiratory capacity;
- Good visual field;
- Proper head positioning and neck alignment;
- Improved overall pressure distribution;
- The reduction of negative postural tendencies that can lead to orthopedic deformities and other secondary medical complications; and,
- A balance between support and function.

Installation and Use

Stealth Positioning™ chest straps are a form of anterior thoracic (frontal upper body) support designed to help users with minimal positioning requirements maintain trunk stability and proper upright alignment. Using a chest strap provides support across the chest without crossing the shoulders and does not prevent flexion above the strap, providing more functional reach than a harness or shoulder straps. The dynamic material also provides some assistance with returning to an upright position.

Fasten tri-ends to the seat back with included fasteners and attach the belt to the tri-end. This will allow proper adjustment of the tension straps.



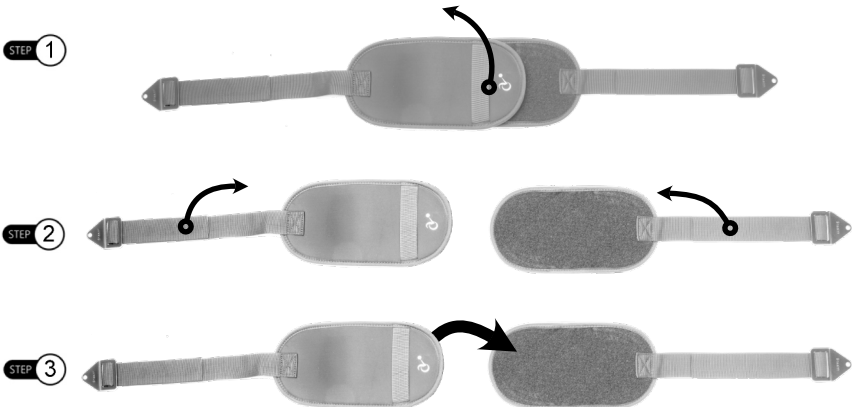
Hook and Loop

The Hook-and-Loop attachment system is available for **Stealth Positioning™** Chest Belts.

Step 1: To release the belt, grasp the webbing strap on the top pad and peel it forward, away from your chest and the bottom pad.

Step 2: To adjust the fit of the belt, shorten or lengthen the straps using the tri-end on the back of your chair. Make sure the pads overlap by at least half of the length of the pad when fitted to the user.

Step 3: To reattach the belt, press the pad with the hooks firmly on top of the pad with the loops in the center of the user's chest and level with the mount points on the chair back.



Side-Release Buckle

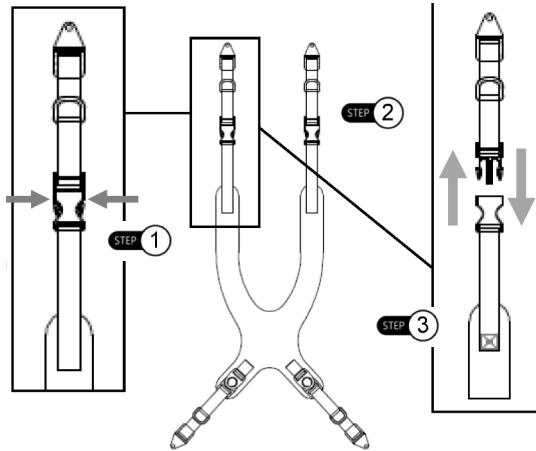
The Side-Release Buckle is used on these **Stealth Positioning™** products:

Pelvic Belts	Backpack Straps	Y-Straps
Shoe Holders	Positioning Systems	
Chest Straps	Foot Positioners	

Step 1: To remove the side-release buckle from the belt, pinch the buttons on the sides of the buckle. This will disengage the locking mechanism.

Step 2: Slide the male portion of the buckle from the housing. Make any adjustments necessary.

Step 3: To reattach the side-release buckle, slide the male portion of the buckle into the housing. A audible 'click' should occur, indicating that the belt is secure. *If the buckle does not latch and hold, immediately refrain from using the product.*



Care and Cleaning

We recommend that all products be examined on a regular basis for wear and function. Check the stitching on the webbing for stress or damage. If loose, frayed or broken parts are discovered, discontinue use and contact your provider. Repairs should only be performed by a wheelchair service professional and with genuine **Stealth Products** parts, fasteners or items appropriate for the service required.

Surfaces may be cleaned with a damp cloth and a mild, non-abrasive cleaner. Ensure all cleaners are approved for finished steel, aluminum, plastic and upholstered surfaces. Vests and straps that are removable and **DO NOT** contain metal components may be machine washed warm (40°C), permanent press cycle, mild process.

DO NOT bleach. DO NOT tumble dry. Dry flat. DO NOT iron.

Important

Never use a chest harness without a positioning belt. Positioning belts and supports should only be used to help support the user's posture. The belts, posture supports and straps must be snug, but must not interfere with the user's breathing. Check to make sure the user cannot slide down in the seating system, as they may suffer chest compression and may suffocate due to pressure from the belts or harnesses. A seat with angle or built-in contours may help prevent the user from sliding in the seat. Due to the possibility of a user sliding while in-chair, unsupervised use of anterior thoracic support devices could pose a serious choking hazard. Continually ensure that the user is sitting upright and that the thoracic support device does not obstruct the user's breathing in any way.

These devices do not conform to ANSI/RESNA WC20 or SAE J2249 and are not designed or approved to provide restraint or protection in the event of a crash. Wheelchair users should transfer to a vehicle seat and use the vehicle seat belt system or a child safety seat that complies with federal safety standards. The wheelchair should then be stored and secured in the vehicle. Children weighing less than 48 lbs. must always transfer to an approved child safety seat.

Before you install or begin using any product from **Stealth Products' Stealth Positioning™** line, it is important that you read and understand the content of these installation and operating instructions. Product misuse due to failure to adhere to instructions and warnings in this document will void your warranty and may result in property damage, injury or death. Always keep the operating instructions in a safe place so they may be referenced as necessary. If this document contains information you do not understand or if there are concerns about safety or operation, contact your provider.

All information, pictures, illustrations and specifications are based on the product information available at the time of printing, and are representative examples. They are not intended to be exact descriptions of the various parts of the product. Instructions are written with the expressed intent of use with standard configurations. They also contain important safety and maintenance information. For assistance with advanced configurations or options, contact your provider or **Stealth Products** at (512) 715-9995 or toll free at (800) 965-9229.

Immediately discontinue use if any function is compromised, if parts are missing or loose or if any component shows signs of excessive wear. Consult with your provider for repair, adjustment or replacement. You can download additional copies of this manual by visiting <https://stlpro.site/stealth-docs/> and searching for "Stealth Positioning" in the document manager.

Warranty

Our products are designed, manufactured, and produced to the highest of standards. If any defect in material or workmanship is found, **Stealth Products** will repair or replace the product at our discretion. Any implied warranty, including the implied warranties of merchantability and fitness for a particular purpose, shall not extend beyond the duration of this warranty. **Stealth Products, LLC** does not warrant damage due to, but not limited to, misuse, abuse, or misapplication of products and modification of product without written approval from **Stealth Products, LLC**.

Any alteration or lack of serial number, where applicable, will automatically void this warranty. **Stealth Products, LLC** is liable for replacement parts only. **Stealth Products, LLC** is not liable for any incurred labor costs. No person is authorized to alter, extend, or waive the warranties of **Stealth Products, LLC**.

To learn more about our warranty and returns policy, please visit <https://stlpro.site/returns-n-warranty>.

About Us

Stealth Products is committed to 100% customer satisfaction. Your complete satisfaction is important to us. Please contact us with suggestions or feedback to help us improve the quality and usability of our products.

You may reach us at:



Distributed by:
Pride Mobility Products Co.
5096 South Service Rd.
Beamsville, Ontario L0R 1B3
<https://www.pridemobility.ca/stealthproducts.com>



MDSS GmbH
Schiffgraben 41
30175 Hannover, Germany

