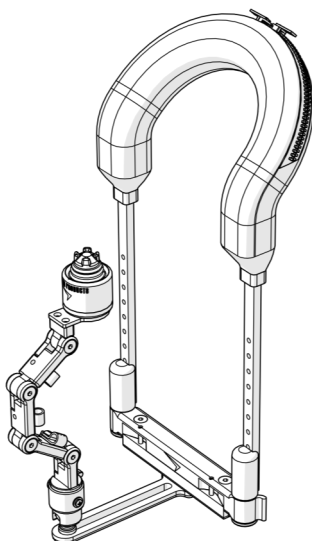




Quick Install

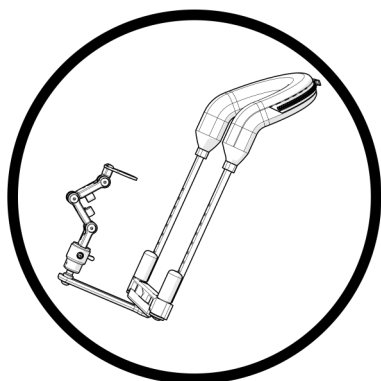
Stealth Products

Alternative Drive Mounting Hardware



IDCH

I-Drive Control Harness



INSTALLATION INSTRUCTIONS FOR
Stealth Products: IDCH-(P, S, M, L)

Compatible with

Stealth's: IDPMP-1, IDPMP-9

mo-Vis': IDM-MICRO-9, IDM-MULTI-9

Stealth Commitment

1.1

Stealth Products strives for 100% customer satisfaction. Your complete satisfaction is important. Please contact us with feedback or suggested changes that will help improve the quality and usability of our swing away hardware. You may reach us at:



Stealth Products, LLC

104 John Kelly Drive, Burnet, TX 78611

Phone: (512) 715-9995

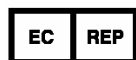
Toll Free: 1(800) 965-9229

Fax: (512) 715-9954

Toll Free: 1(800) 806-1225

info@stealthproducts.com

www.stealthproducts.com



MDSS GmbH

Schiffgraben 41

30175 Hannover, Germany



Installation Date :

Dealer :




Dealer Stamp :

Serial Number :

Warning Labels

2.1

Warnings are included for the safety of the user, client, operator and property. Please read and understand what the signal words **SAFETY, NOTICE, CAUTION, WARNING** and **DANGER** mean, how they could affect the user, those around the user, and property.

 DANGER	Identifies an imminent situation which (if not avoided) will result in severe injury, death, and property damage.
 WARNING	Identifies a potential situation which (if not avoided) will result in severe injury, death, and property damage.
 CAUTION	Identifies a potential situation which (if not avoided) will result in minor to moderate injury, and property damage.
NOTICE	Identifies important information not related to injury, but possible property damage.
SAFETY	Indicates steps or instructions for safe practices, reminders of safe procedures, or important safety equipment that may be necessary.

Limited Liability

2.2

Stealth Products, LLC accepts no liability for personal injury or damage to property that may arise from the failure of the user or other persons to follow the recommendations, warnings, and instructions in this manual.

Testing

2.3

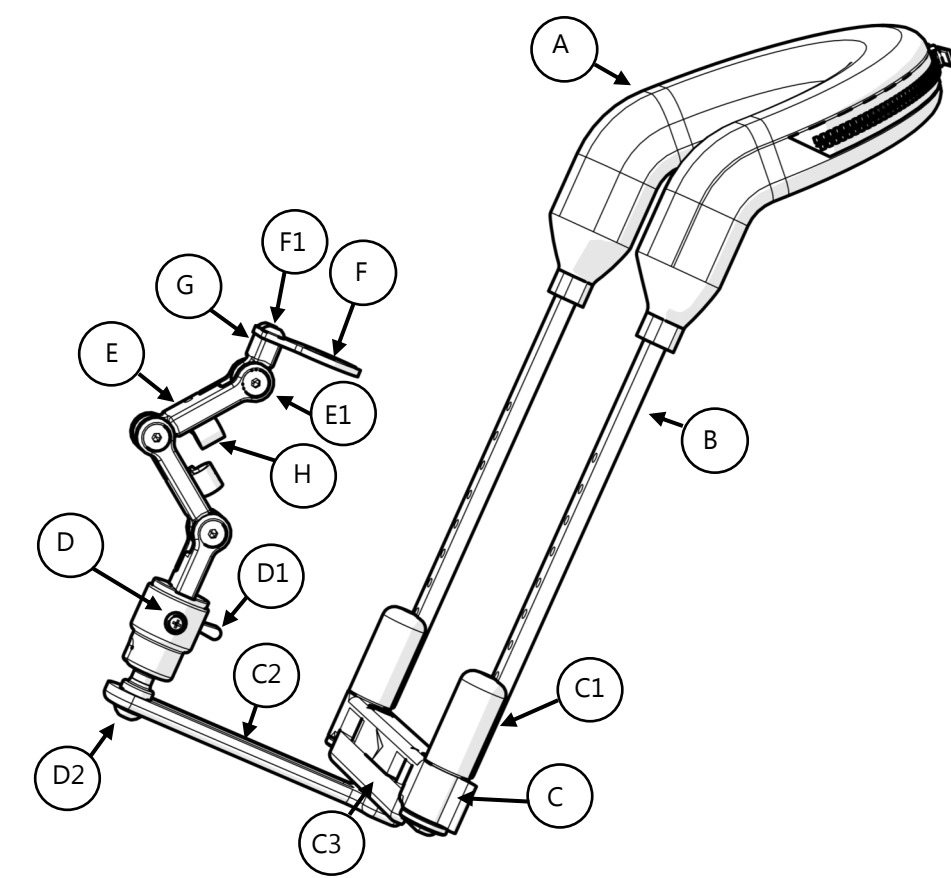
Initial setup and driving should be done in an open area free of obstacles until the user is fully capable of driving safely.

The i-Drive Control Harness and joystick should be tested by the care givers and end user and adjusted specifically to their needs.

1.0 Customer Satisfaction	i
1.1 Stealth Commitment.....	i
2.0 Warnings	ii
2.1 Warning Labels	ii
2.2 Limited Liability	ii
2.3 Testing	ii
3.0 Table of Contents.....	iii
4.0 Parts and Accessories	1
4.1 Mounting Hardware Parts	1
4.2 Mounting Hardware Tools	2
5.0 Installation Instructions	3
5.1 Installing The Multi/IDPMP Joystick	3
5.2 Installing The Micro Joystick.....	4
6.0 Functioning	6
6.1 Addition/Removal Of Link	6
6.2 Height Adjustment	7
6.3 Swivel Link Adjustment	8
6.4 Joystick Mount Adjustment	9
6.5 Lateral Adjustment.....	10
6.6 Depth Adjustment.....	10
6.7 Replacing The IDCH Belt	11
6.8 Removing The Collar.....	13
7.0 Warranty	14
7.1 In Case Of Product Failure.....	14
8.0 Notes	a

Mounting Hardware Parts

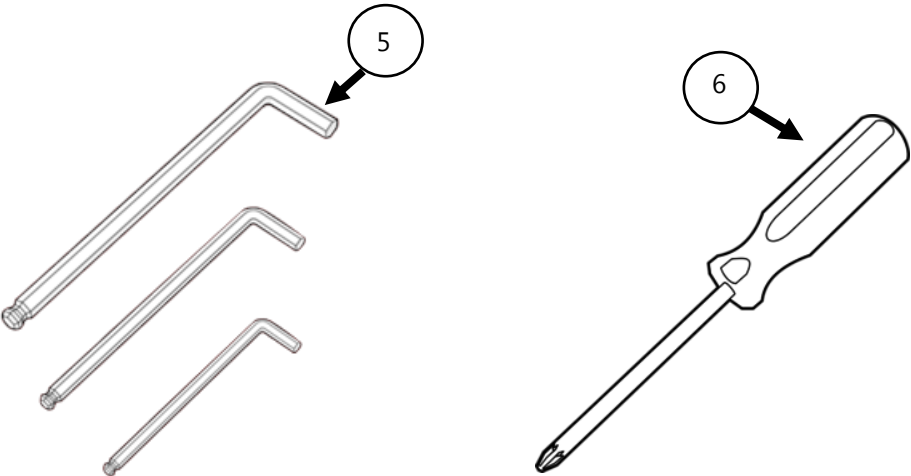
4.1



		Description	
A	Collar		
B	IDCH ARM		
C	Latch for the IDCH	C1	Height Adjustment Latch
		C2	Depth Adjustable Track
		C3	Lateral Adjustment Track
D	Swivel Link for IDCH	D1	Swivel Adjustment Handle
		D2	M6 Screw
E	Niño Link for IDCH	E1	M5X.8X20 MM FHS (3)
F	Joystick Mount	F1	M5X.8X6 MM BHS (2)
G	Niño Link For Mount		
H	1/4" Wire Clamp		

Mounting Hardware Tools

4.2

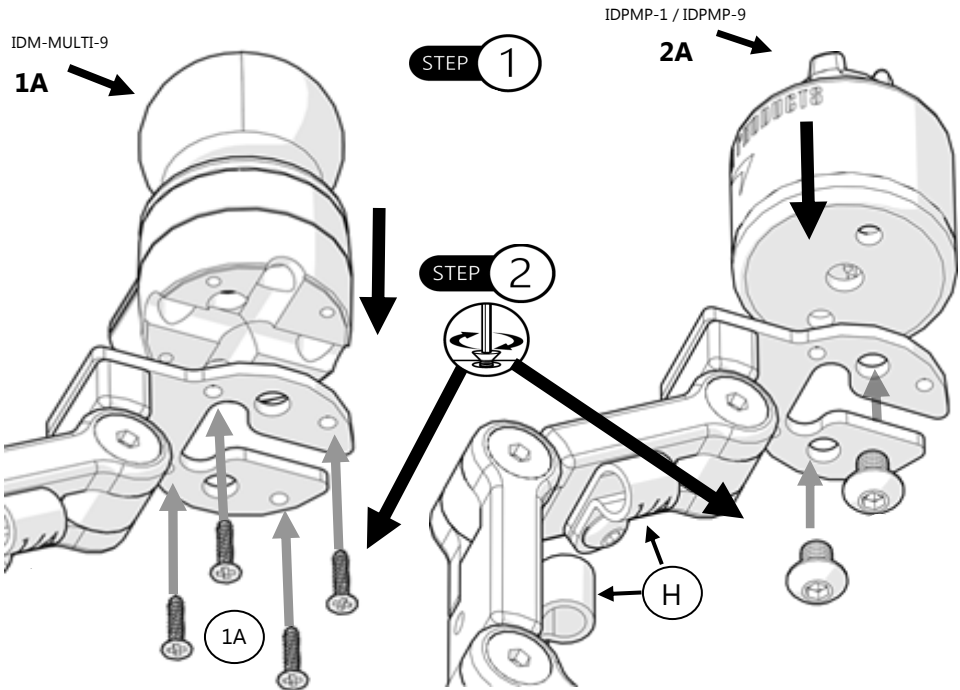


Tools		Description	
5	T-Handle ¹	2mm T-Handle	
		3mm T-Handle	
		4mm T-Handle	
6	Phillips Screwdriver		Small

1. T-Handles not included

Installing The Multi/IDPMP Joystick

5.1



* USB ports to client's right side for forward direction.
Standard Configuration.

* Orient dimple on top of housing, furthest from client for forward direction.

1A	Multi- Mounting	M4 x .7x10mm PHS (included in IDM-Muti-9 accessory pack).	2A	IDPMP-1 / IDPMP-9 Mounting	10-32 x 1/4 BHS (2)
	Phillips Screwdriver	Small		T-Handle ¹	2mm T-Handle

Step 1: Place Multi or IDPMP joystick atop the joystick mount. Match the holes on the base of the joystick to the holes on the mount.

Step 2: Secure joystick to mount by inserting provided screws through the matching holes.

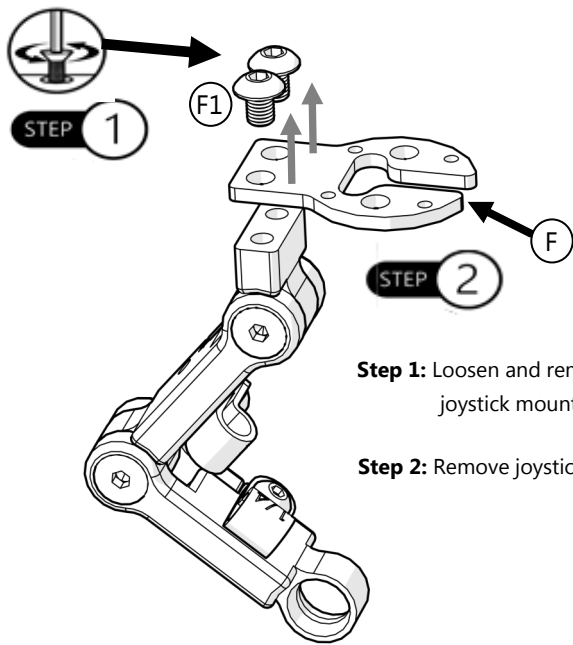
Step 3: Secure Power Cord via 1/4" clips (H).

⚠ WARNING

Ensure joystick power cord is fed thru joystick mount cutout, without splicing or kinking.

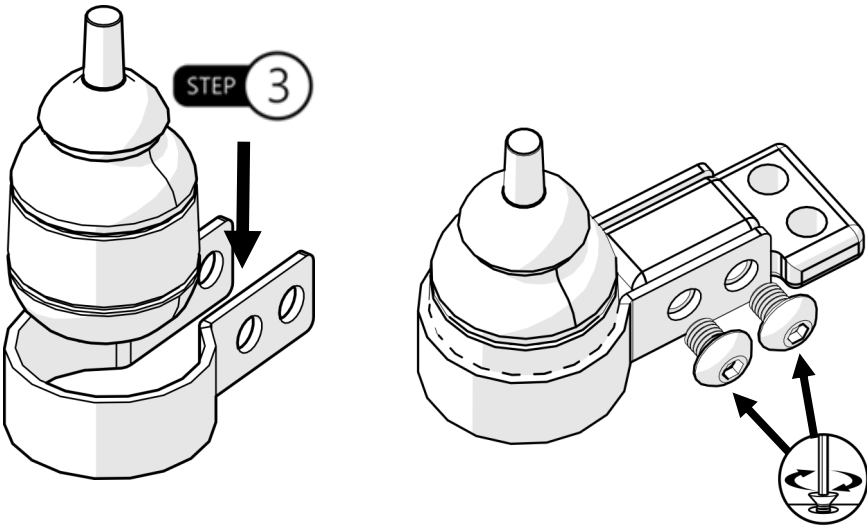
Installing The Micro Joystick

5.2



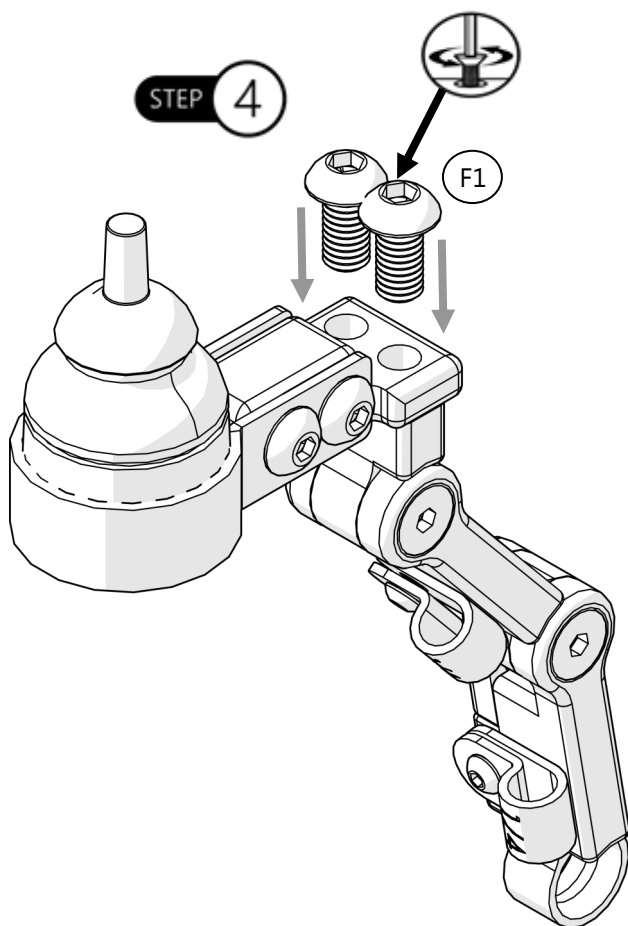
Step 1: Loosen and remove screws (F1) from joystick mount.

Step 2: Remove joystick mount from niño link.



Step 3: Slightly loosen M5 x .8 x 6mm BHS and slide Micro joystick through the strap. Tighten screws with 3mm T-Handle.

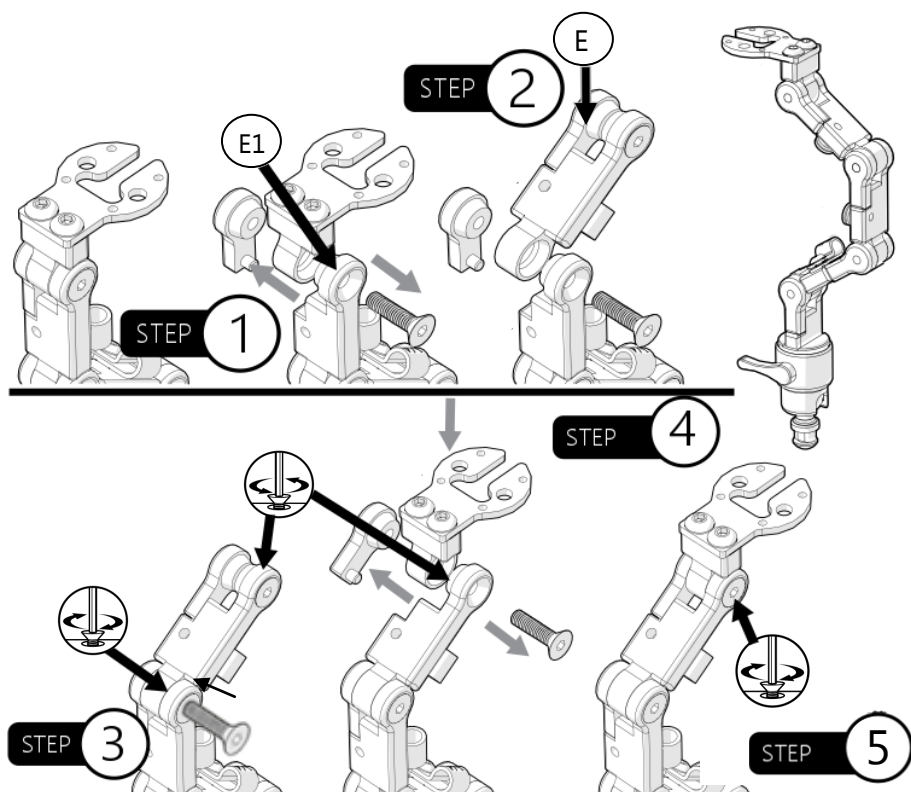
***Orient the arrow, on the underside of the joystick, pointing away from the client for standard configuration.**



Step 4: Attach joystick strap mount to niño link with screws (F1) and tighten with 3mm T-Handle.

Addition/Removal Of Link

6.1



If additional height is required:

Step 1: Locate the link screw (E1) on the top link. Remove the M5x.8x20mm FHS from the link, detaching the joystick mount and link nut.

Step 2: Line up holes on link and add the IDCH-Link (E) to open end.

Step 3: Insert link screw (E1) and tighten with a 3mm T-Handle.

Step 4: Remove screw at the top of the new link.

Step 5: Add joystick mount and link nut, lining up all the holes. Insert screw and tighten.

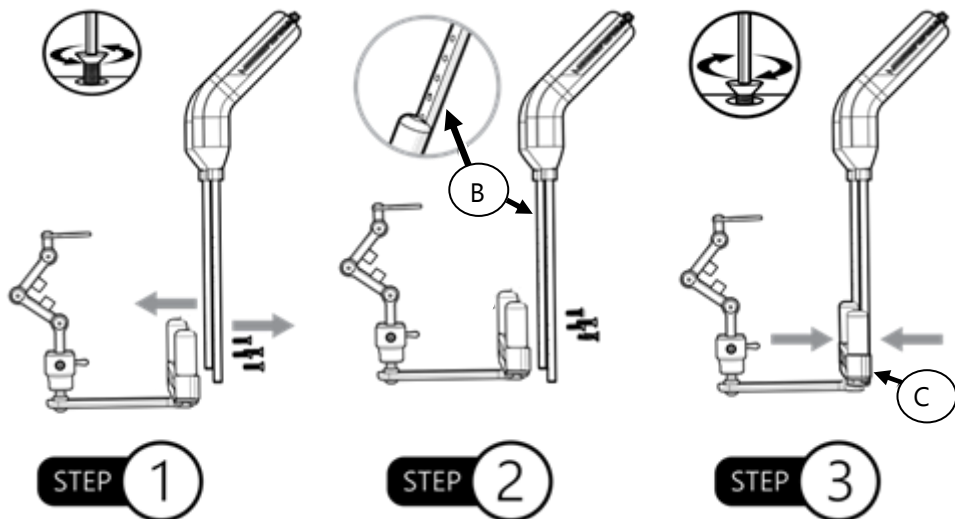
CAUTION

DO NOT OVER TIGHTEN SCREWS. This could cause wearing of screws or joystick threads, causing the client to lose efficient control.

Height Adjustment

6.2

Add links to adjust height before determining if the arms should be cut. If there are no other options follow the steps below.



Step 1: Loosen and remove the M3 x .5 x 12mm FHS with the 2mm T-Handle to remove the collar. Determine the correct height of the mount that is needed for the user.

Step 2: Once the desired height has been determined, make cuts on the arms (B). Adjustments to the height of the arms should only be made in 1/2" increments.

Step 3: Snap the arms back into the latch (C). Using the 2mm T-Handle, tighten the M3 x .5 x 12mm FHS back into place.

SAFETY

Always have adjustments performed by a trained service technician.

NOTICE

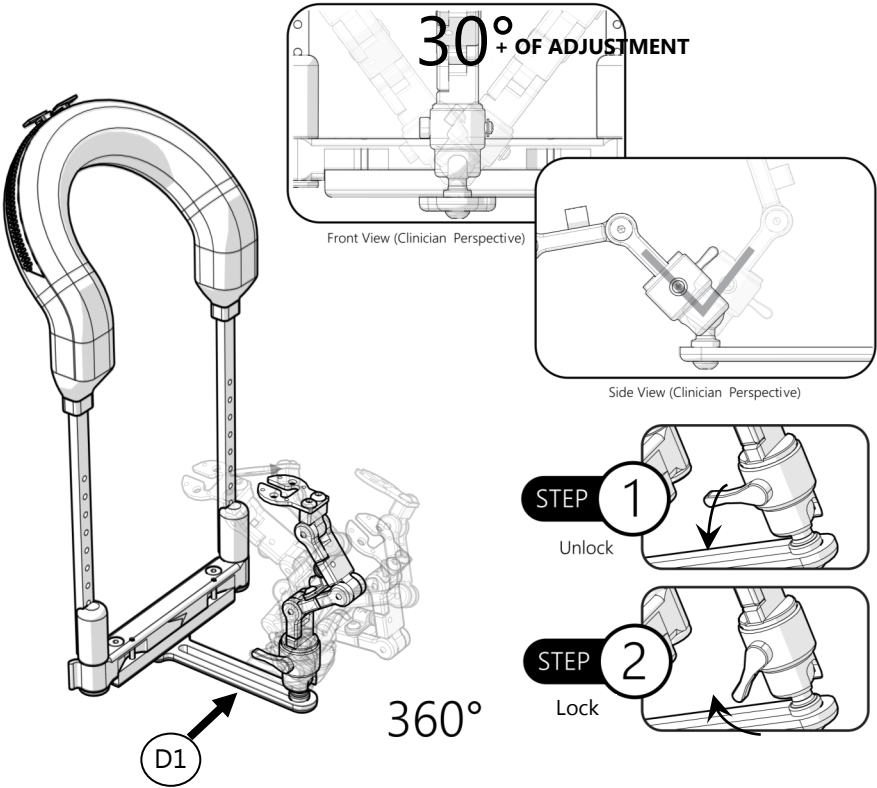
Cutting the arms should be done only as a last resort. Cuts on the arms need to be made on the hole below the desired mount location. Ensure cut is made through the middle of the hole.

⚠ CAUTION

After cutting adjustments for the arms, smooth all sharp edges.

Swivel Link Adjustment

6.3



Step 1: Turn the handle (D1) in a downward direction to unlock and adjust.

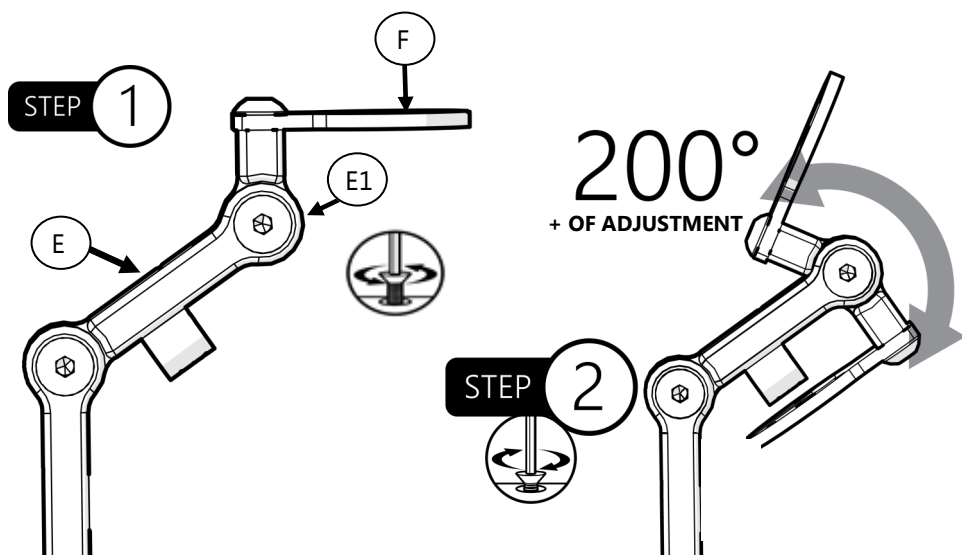
Step 2: Orient to desired angle of client's needs.

Step 3: Turn handle (D1) in an upward direction to lock into place.

Joystick Mount Adjustment

6.4

To adjust the angle of the Multi or IDPMP joystick mount:



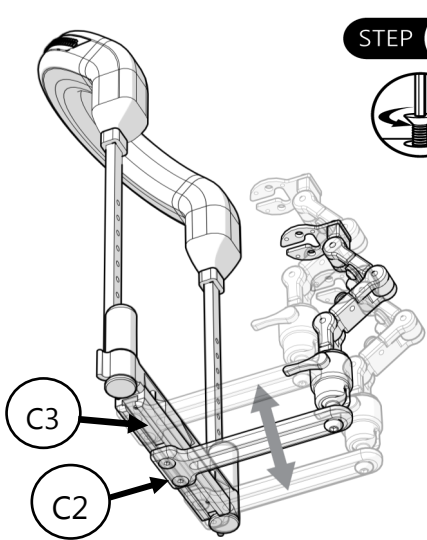
Step 1: Loosen screw (E1) on niño link nut (E).

Step 2: Adjust Joystick mount (F) to desired angle and tighten screw (E1) with 3mm T-Handle.

CAUTION Do not over tighten.

Lateral Adjustment

6.5



STEP 1

Step 1: Loosen M5x.8x12mm FHS on track and position lateral track to desired location on horizontal track (C3). Range of adjustment depends on size of control harness.

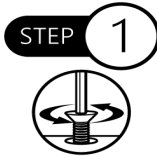
STEP 2

Step 2: Tighten screws when track is in the correct location using the 3mm T-Handle.

Minimum 3 in. to max 6 in. adjustment depending on collar size

Depth Adjustment

6.6



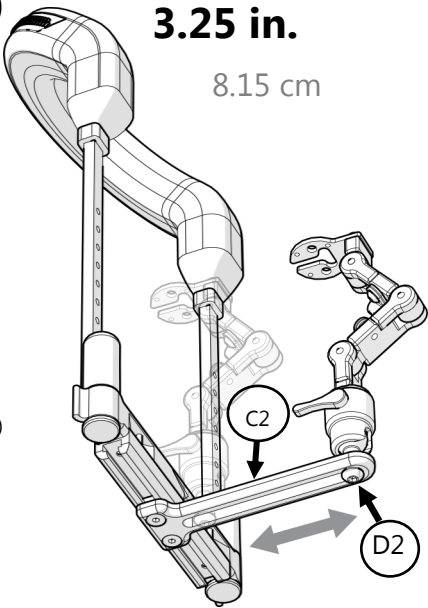
STEP 1

Step 1: Loosen screw (D2). Move the swivel mount to the desired location along the track (C2).



STEP 2

Step 2: When the mount is in the desired location along the track, tighten the screw (D2) using the 4mm T-Handle.



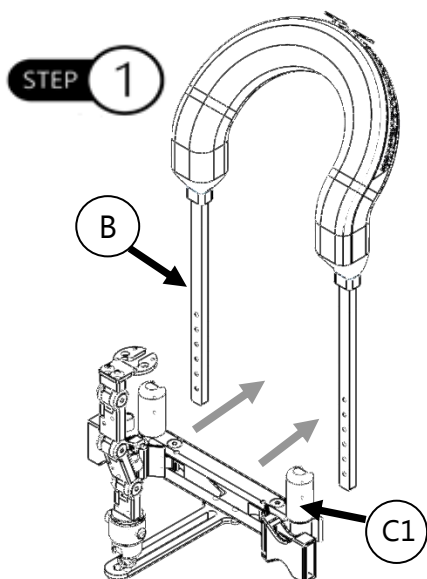
3.25 in.

8.15 cm

** Depth adjustment does not vary per size.*

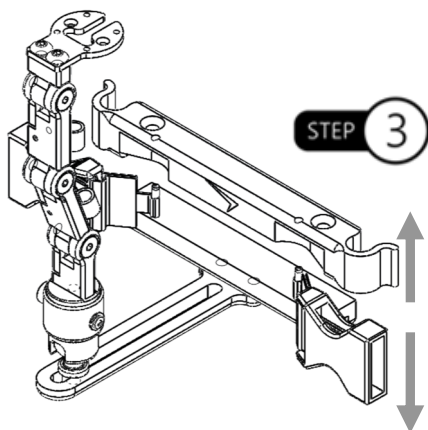
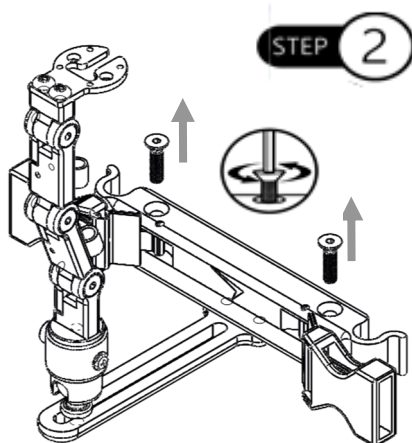
Replacing The IDCH Belt

6.7

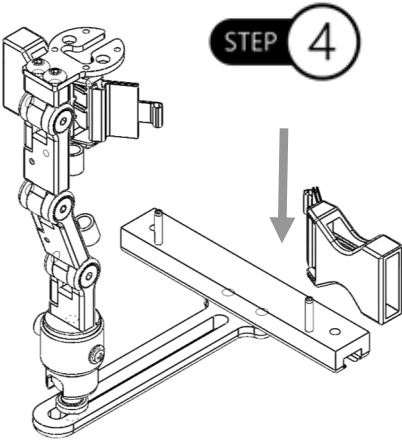


Step 1: Unscrew and remove M3 x .5 x 12mm FHS with the 2mm T-Handle. Separate arms (B) from latch (C1).

Step 2: Loosen and remove the M5 x .8 x 20mm FHS (2) from the i-Drive latch (top).

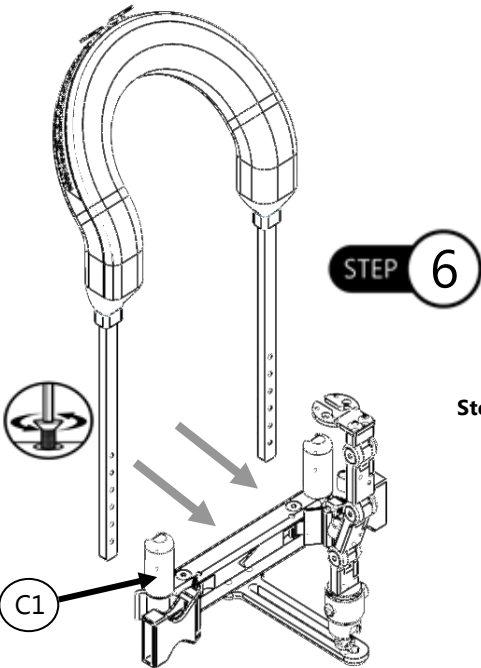
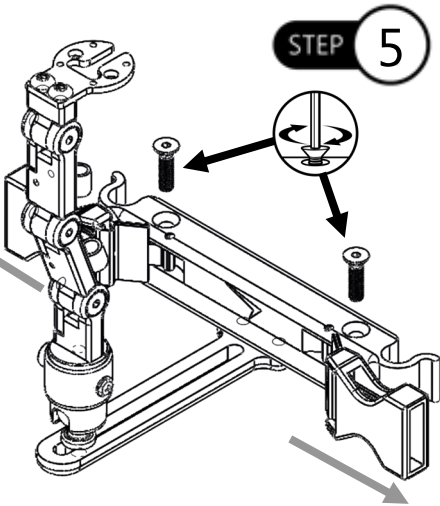


Step 3: Separate the latch from the track. Pull straight upward.



Step 4: Remove buckles off of pins. Replace new buckles by sliding 3/8" webbing onto pins. Match holes of the track to the holes of the latch, and snap back together.

Step 5: Give a slight tug to female buckle to ensure webbing is hooked onto slotted spring pin. Insert M5 X 0.8 X 20mm FHS (2) and tighten.



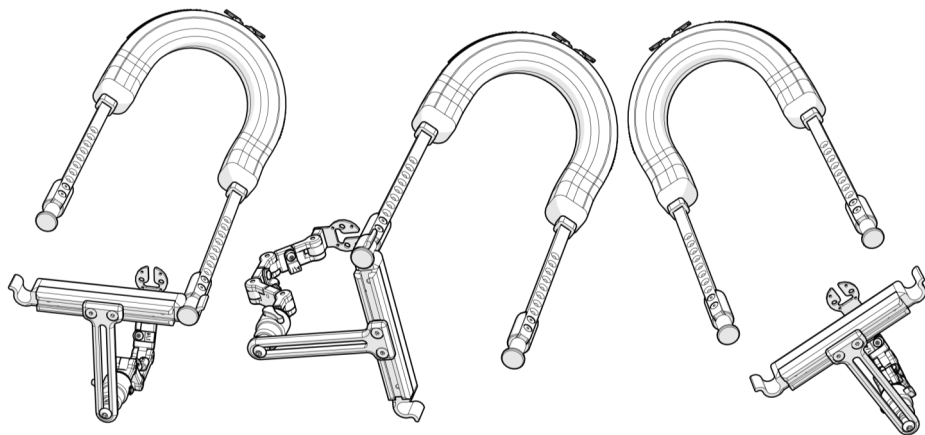
Step 6: Snap the arms back into the latch (C1). Using the 2mm T-Handle, tighten the M3- .5 x 12mm FHS screws back into place.

Removing The Collar

6.8

The track can be released from the collar (Client's perspective).

Three (3) different options are available to remove the arms from the latch; left, right, or a full release.



Left Release
(Swing to client's right side)

Right Release
(Swing to client's left side)

Full Release

Step 1: For your safety, unbuckle the belt from collar.

Step 2: Chose the direction to release the arms from the latch.

Step 3: Place a firm hold on the latch and arm.

Step 4: Pull latch away from client.

Step 5: Secure and turn latch.

Step 6: Remove from around the neck.

The pads/covers are designed and produced to the highest of standards. Our pads/covers are guaranteed to be free of defects in material and workmanship for a period of 24 months. If any defect in the material or workmanship is found, Stealth Products will repair or replace, at our discretion, the pad/cover of the product. This warranty does not apply to pads/covers abused or misused by the user and deemed such by Stealth Products, LLC.

Claims and repairs should be processed through the nearest Stealth Products provider.

No person is authorized to alter, extend, or waive the warranties of Stealth Products, LLC. Stealth Products warrants against failure due to defective materials or workmanship:

Hardware: 5 years

Electronics: 3 years

Limitations

This warranty does not extend to those items which may require replacement due to normal wear and tear:

- Outer covers
- Inner covers
- Circumstances beyond the control of Stealth
- Labor, service calls, shipping, and other charges incurred for repair of the product, unless specifically authorized, IN ADVANCE, by Stealth Products, LLC
- Repairs and/or modifications made to any part without specific consent from Stealth.

Exclusions also include components with damage caused by:

- Exposure to moisture

In Case of Product Failure

In the event of product failure covered by our warranty, please follow the procedures outlined below:

1. Call Stealth at +1 (512) 715-9995 or toll free +1-800-965-9229.
2. Request the Returns Department or obtain an RA from the Returns Department and follow department or documentation instructions.

This image shows a single page of white paper with horizontal blue or grey ruling lines. The lines are evenly spaced and run across the width of the page, leaving small margins at the top and bottom. There are no vertical margin lines, text, or other markings on the page.



Stealth Products, LLC. • info@stealthproducts.com • www.stealthproducts.com
+1(800) 965-9229 | +1(512) 715-9995 | 104 John Kelly Drive, Burnet TX 78611