

# LCD Control Panel



## Safety Guidelines

---



**WARNING!** An authorized Pride Provider or a qualified technician must perform the initial setup of this product and must perform all of the instructions in this manual.

The symbols below are used throughout this owner's manual and on the product to identify warnings and important information. It is very important for you to read them and understand them completely.



**WARNING!** Indicates a potentially hazardous condition/situation. Failure to follow designated procedures can cause either personal injury, component damage, or malfunction. On the product, this icon is represented as a black symbol on a yellow triangle with a black border.



**MANDATORY!** These actions should be performed as specified. Failure to perform mandatory actions can cause personal injury and/or equipment damage. On the product, this icon is represented as a white symbol on a blue dot with a white border.



**PROHIBITED!** These actions are prohibited. These actions should not be performed at any time or in any circumstances. Performing a prohibited action can cause personal injury and/or equipment damage. On the product, this icon is represented as a black symbol with a red circle and a red slash.

**NOTE:** These instructions are compiled from the latest specifications and product information available at the time of publication. We reserve the right to make changes as they become necessary. Any changes to our products may cause slight variations between the illustrations and explanations in this manual and the product you have purchased. The latest/current version of this manual is available on our website.

**NOTE:** This product is compliant with WEEE, RoHS, and REACH directives and requirements.

**NOTE:** This product meets IPX4 classification (IEC 60529).

**NOTE:** This product and its components are not made with natural rubber latex. Consult with the manufacturer regarding any after-market accessories.



## Table of Contents

3

---

Label Information .....	4
Introduction .....	5
EMI/RFI .....	6
The LCD Control Panel .....	7
LCD Screen and Control Panel Settings .....	9
Diagnostic Fault Codes.....	12
Care and Maintenance .....	13
Warranty .....	13

**Product Safety Symbols**

The symbols below are used on the product to identify warnings, mandatory actions, and prohibited actions. It is very important for you to read and understand them completely.

***NOTE: There are more warnings identified and explained in the Consumer Safety Guide that is included with your scooter. Please become familiar with all the warnings and safety information found in the Consumer Safety Guide.***



Read and follow the information in the owner's manual.



Avoid exposure to rain, snow, ice, salt, or standing water whenever possible. Maintain and store in a clean and dry condition.



EMI/RFI - This product has been tested and passed at an immunity level of 20 V/m.



Disposal and recycling - Contact your authorized Pride Provider for information on proper disposal and recycling of your Pride product and its packaging.

WELCOME to Pride Mobility Products (Pride). The product you have purchased combines state-of-the-art components with **safety**, comfort, and styling in mind. We are confident that the design features will provide you with the conveniences you expect during your daily activities. Understanding how to **safely** operate and care for this product should bring you years of trouble-free operations and service.

**Read and follow** all instructions, warnings, and notes in this manual before attempting to operate your product for the first time. You must also read all instructions, warnings, and notes contained in any supplemental instructional booklets that accompanied your scooter before initial operation. Your **safety** depends upon you, as well as your provider, caretaker, or healthcare professional in using good judgement.

This manual is to be used in addition to the product owner's manual that came with your scooter. If there is any information in this manual which you do not understand, or if you require additional assistance for setup or operation, please contact your authorized Pride Provider. **Failure to follow the instructions, warnings, and notes in this manual and those located on your Pride product can result in personal injury and/or product damage and will void Pride's product warranty.**

### **Purchaser's Agreement**

By accepting delivery of this product, you promise that you will not change, alter, or modify this product or remove or render inoperable or unsafe any guards, shields, or other safety features of this product; fail, refuse, or neglect to install any retrofit kits from time to time provided by Pride to enhance or preserve the safe use of this product.

***NOTE: If you ever lose or misplace your copy of this manual, contact us and we will be glad to send you a new one immediately.***

## Electromagnetic and Radio Frequency Interference (EMI/RFI)



**WARNING!** Laboratory tests have shown that electromagnetic and radio frequency waves can have an adverse effect on the performance of electrically-powered mobility vehicles.

Electromagnetic and Radio Frequency Interference can come from sources such as cellular phones, mobile two-way radios (such as walkie-talkies), radio stations, TV stations, amateur radio (HAM) transmitters, wireless computer links, microwave signals, paging transmitters, and medium-range mobile transceivers used by emergency vehicles. In some cases, these waves can cause unintended movement or damage to the control system. Every electrically-powered mobility vehicle has an immunity (or resistance) to EMI. The higher the immunity level, the greater the protection against EMI. This product has been tested and has passed at an immunity level of 20 V/m.



**WARNING!** Be aware that cell phones, two-way radios, laptops, electricity generators or high power sources and other types of radio transmitters may cause unintended movement of your electrically powered mobility vehicle due to EMI. Do not turn ON hand-held personal communication devices, such as citizens band (CB) radios and cellular phones, while the scooter is turned on. Be aware of nearby transmitters, such as radio or TV stations, and avoid coming into close proximity to them.

**WARNING!** The addition of accessories or components to the electrically-powered mobility vehicle can increase the susceptibility of the vehicle to EMI. Do not modify your scooter in any way not authorized by Pride.



**WARNING!** The electrically-powered mobility vehicle itself can disturb the performance of other electrical devices located nearby, such as alarm systems.

**NOTE:** For further information on EMI/RFI, go to the Resource Center on [www.pridemobility.com](http://www.pridemobility.com). If unintended motion or brake release occurs, turn your scooter off as soon as it is safe to do so. Contact Pride or your authorized Pride Provider to report the incident.

## LCD Control Panel

The LCD control panel houses all of the controls and indicators needed to drive your scooter, including speed adjustment, trip information, lighting buttons, horn buttons, battery condition status, and scooter system status.



**PROHIBITED!** Do not expose the control panel to moisture. In the event that the control panel does become exposed to moisture, do not attempt to operate your scooter until the control panel has dried thoroughly.

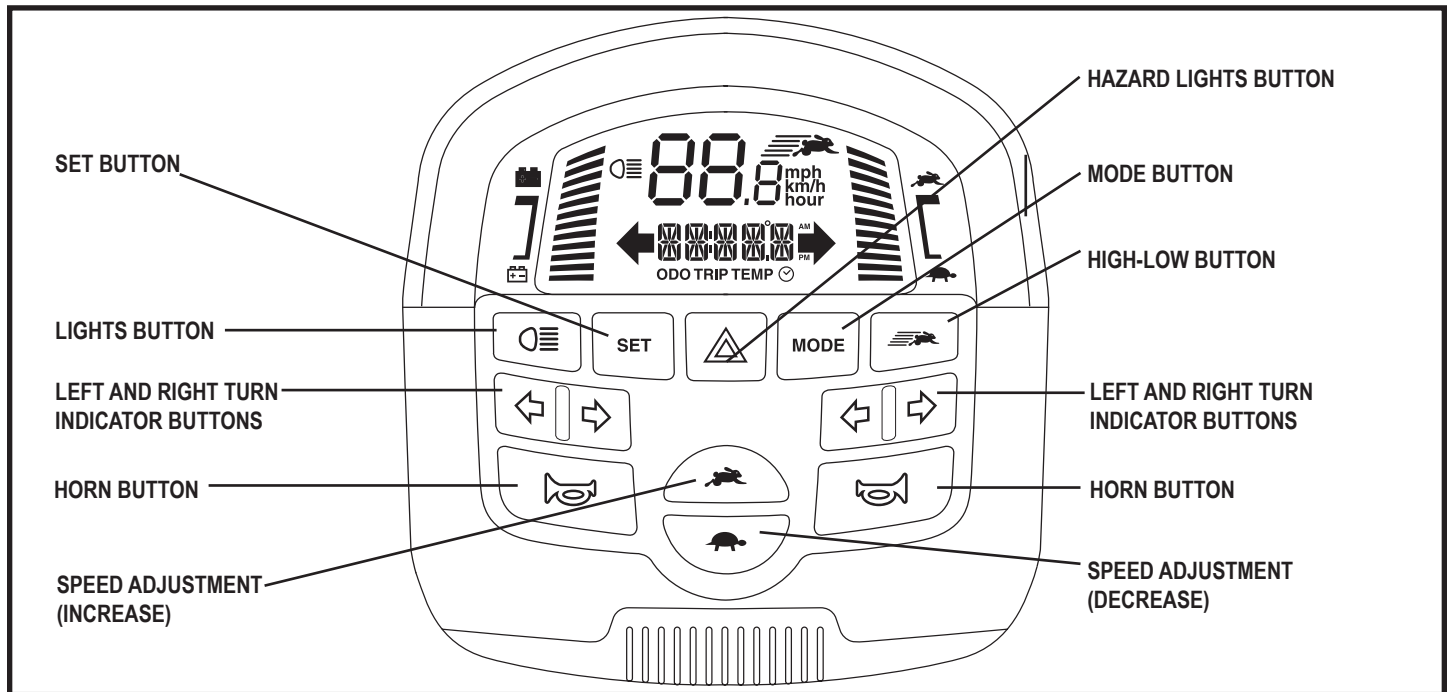


Figure 1. LCD Control Panel

### Lights Button

- Press the lights button once to activate the lighting system. The light symbol will be shown on the LCD screen.
- Press the lights button again to turn the lighting system off.



**WARNING!** Scooter users are required to use their lights when visibility is restricted—day or night.

### Turn Indicator Buttons

- Press the appropriate turn indicator button once to activate it. The turn indicator will flash on the LCD screen.
- Press the same indicator button to turn it off.

**NOTE:** The turn indicators are timed to shut off after 15 seconds. A warning beep will sound as long as the turn indicator is on. See figure 8 for volume control.

## Hazard Lights Button

This button activates the 4-way yellow flashers on your scooter.

- Press the button once to turn on the flashers.
- Press the button again to turn off the flashers.

**NOTE:** *The 4-way flashers will flash and a warning beep will sound as long as the hazard lights are on. See figure 8 for volume control.*

## Horn Buttons

These buttons activate a warning horn. Your scooter must be powered up for the horn to be operational. Do not hesitate to use the warning horn when doing so may prevent accident or injury.

## High-Low Button

This button toggles the scooter's speed between HIGH and LOW.

- Press the **High-Low** button once to set the speed adjustment to high. The High-Low indicator will display on the LCD screen. **See figure 2.** Using this setting in conjunction with the speed adjustment buttons will allow the scooter to achieve speeds up to the maximum preprogrammed speed for the scooter.
- Press the **High-Low** button again to set the speed adjustment to Low. The High-Low indicator will not display on the LCD screen. Using this setting in conjunction with the speed adjustment buttons will allow the scooter to achieve speeds up to the half the maximum preprogrammed speed for the scooter.

## Speed Adjustment Buttons

These adjustment buttons enable you to pre-select and limit your scooter's speed. This is indicated by the maximum speed indicator on the LCD screen. **See figure 2.**

- Press the image of the **tortoise** to decrease the speed of the scooter.
- Press the image of the **rabbit** to increase the speed of the scooter.

**NOTE:** *The more bars shown on the maximum speed indicator, the faster your pre-selected maximum speed will be. See figure 2.*

## Mode Button

Use the mode button to scroll between the odometer, tripometer, temperature, and clock.



## LCD Screen and control panel settings

The LCD control panel offers easily intuited feedback information via the LCD screen. **See figure 2.** The LCD screen is also used during the set-up (activation) of the various control panel settings.

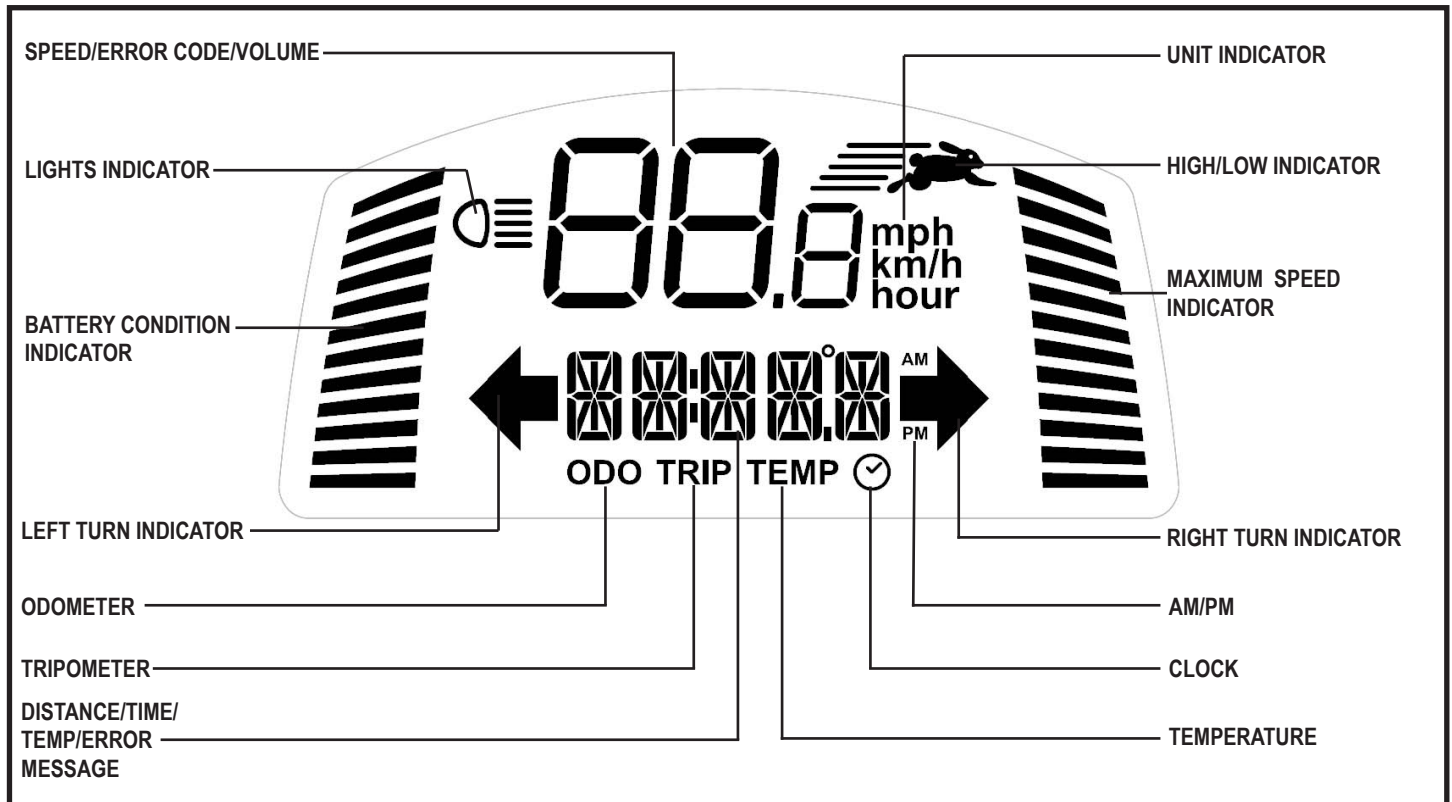


Figure 2. LCD Screen

### Odometer Mode (ODO)

The odometer displays the total distance traveled over the life of the scooter and cannot be reset. **See figure 3.**

#### Choose between:

- mph = miles per hour
- km/h = kilometers per hour
- hour = hours of use

#### To set the odometer:

1. Press the **MODE** button until **ODO** appears on the LCD screen.
2. Press and hold the **SET** button, then simultaneously press the **MODE** button until the setting options flash.
3. Scroll through the options by pressing the **SET** button.
4. When the desired option flashes, press any button except **SET** to exit.

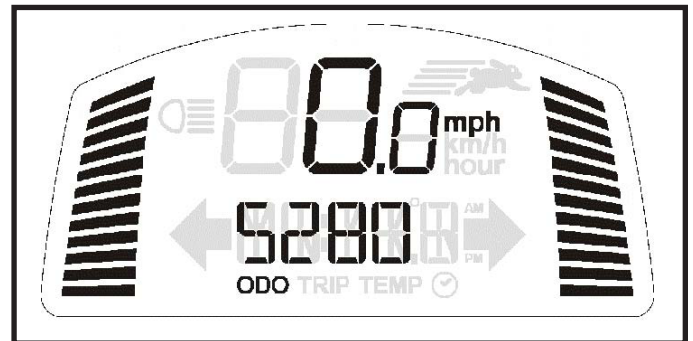


Figure 3. Odometer Mode

### Tripometer Mode (TRIP)

The tripometer displays trip distance traveled. The tripometer can be reset back to (0) at any time. See figure 4.

#### To reset the tripometer:

1. Press the **MODE** button until **TRIP** appears on the LCD screen
2. Press and hold the **SET** button, then simultaneously press the **MODE** button for 2 seconds and release.
3. Press the **SET** button until the tripometer resets to 0.0.
4. Press any button except **SET** to exit.

### Temperature Mode (TEMP)

This mode will display the current temperature in either °F or °C. See figure 5.

#### To set the temperature:

1. Press the **MODE** button until **TEMP** appears on the LCD screen.
2. Press and hold the **SET** button, then simultaneously press the **MODE** button until the settings options flash.
3. Scroll through the options (°F or °C) by pressing the **SET** button.
4. When your choice is flashing, press any button except **SET** to exit.

### Clock Mode (🕒)

Clock mode can be viewed in either the standard 12-hour or a 24-hour display. See figure 6.

#### To set the clock:

1. Press the **MODE** button until the clock symbol appears on the LCD screen.
2. Press and hold the **SET** button, then simultaneously press the **MODE** button until the hour digit flashes.
3. Use the **SET** button to increase the hour to the correct number.
4. Continue to use the **MODE** and **SET** buttons to program the minutes and AM/PM setting.
5. Press any button except **MODE** or **SET** to exit.

**NOTE: If AM or PM is not selected, the clock will revert to 24 hour mode.**



Figure 4. Tripometer Mode

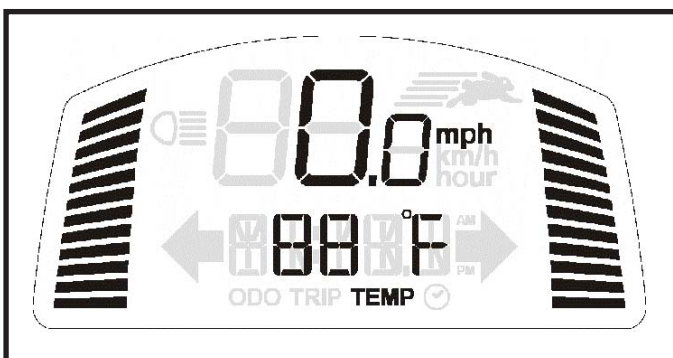


Figure 5. Temperature Mode

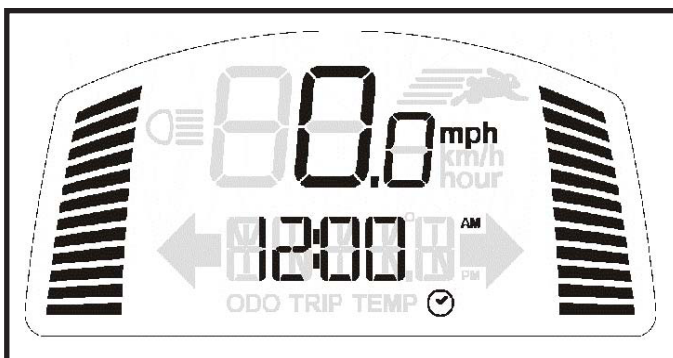


Figure 6. Clock Mode

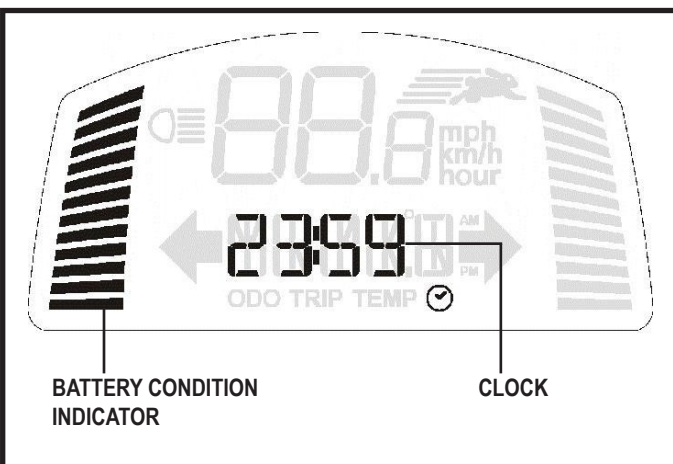


Figure 7. Battery Charging Mode

## Battery Charging Mode

During battery charging, the console will display the clock and the battery condition indicator. **See figure 7.**

## Battery Condition Indicator

When the key is turned to the “on” position, this LED indicator gives an approximate reading of battery strength. **See figure 7.**

When the scooter’s battery voltage reaches a low enough level, a warning beep will sound once, indicating the batteries need charging. The warning beep will not sound again until the scooter is restarted or the throttle control lever is pressed.

## Maximum Speed Indicator LED

The maximum speed indicator displays the maximum speed selected with the speed adjustment buttons. The more bars that are lit, the faster the speed. The maximum scooter speed will be determined by the HIGH-LOW setting, which limits the maximum speed to half when set to LOW. The actual travel speed will be shown in the speed display on the LCD screen. **See figure 2.**

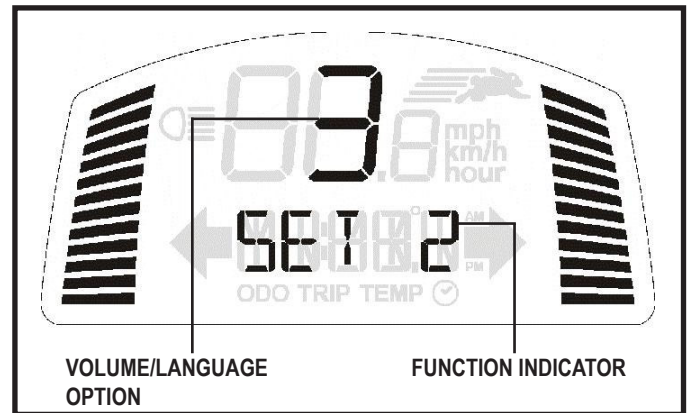
## Volume Control

The volume of the hazard lights, horn, low voltage, turn signals, and error message beeps can be increased, decreased, or turned off separately. **See figure 8.**

### To set the volume:

1. Ensure the key is in the “off” position.
2. Press the appropriate two buttons simultaneously (see the table), and turn the key to the “on” position.
3. Once the volume control screen appears, release the buttons.
4. Press the rabbit button to increase the volume and the tortoise button to decrease the volume of the beep (0 indicates off and 4 indicates the loudest volume).
5. To exit, press any button except the **rabbit** or **tortoise**.

**NOTE:** The error message language option is set the same way as the volume.



**Figure 8. Volume Control Display**

FUNCTION	BUTTONS	FUNCTION INDICATOR
Hazard Lights	SET + HAZARD LIGHTS	SET 1
Horn	SET + HORN	SET 2
Low Voltage	SET + LEFT TURN INDICATOR	SET 3
Turn Signals	SET + RIGHT TURN INDICATOR	SET 4
Error Message Language Option	SET + LIGHTS	SET 5 6 - Spanish 5 - Italian 4 - French 3 - German 2 - Dutch 1 - English 0 - Close

### Diagnostic Fault Codes

The diagnostic fault codes for your scooter are designed to help you perform basic troubleshooting quickly and easily. A diagnostic fault code and error message will be displayed (**see figure 9**) in the event one of the conditions listed develops.

**NOTE: Your scooter will not run unless the fault code condition is resolved and the scooter has been turned off, then turned back on.**

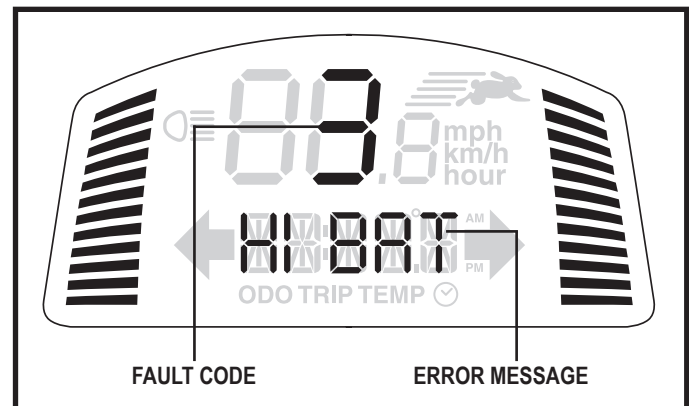


Figure 9. Fault Code Display

FAULT CODE	CONDITION	SOLUTION	ERROR MESSAGE
1	Batteries need charging	Charge batteries as soon as possible.	N/A
2	Low voltage, batteries need charge immediately	Charge batteries as soon as possible.	Lo BAT
3	Over Voltage	Unplug charger and/or turn scooter off, then back on.	HI BAT
4	Over Current	Turn scooter off for a few minutes, then turn scooter back on.	HI CUR
5	Park brake fault	Remove the key from the key switch, then push the manual freewheel lever to the drive position and restart your scooter. Refer to the scooter owner's manual.	BRAKE
6	Throttle control lever not centered at start up	Return the throttle control lever to center position, turn scooter off, then back on.	T POT
7	Throttle control lever broken or faulted	Contact your authorized Pride Provider.	T POT
8	Motor fault	Contact your authorized Pride Provider.	MOTOR
9	Other fault	Contact your authorized Pride Provider.	OTHER

### Care and Maintenance

Refer to your scooter's owner's manual for proper cleaning and disposal instructions.

### Warranty

Refer to your scooter owner's manual for specific information on the product warranty.





## **USA**

401 York Avenue  
Duryea, PA 18642

## **Canada**

5096 South Service Road  
Beamsville, Ontario L0R 1B3

## **Australia**

20-24 Apollo Drive  
Hallam, Victoria 3803  
***[www.pridemobility.com.au](http://www.pridemobility.com.au)***

## **New Zealand**

38 Lansford Crescent  
Avondale  
Auckland, New Zealand 0600  
***[www.pridemobility.co.nz](http://www.pridemobility.co.nz)***

## **UK**

32 Wedgwood Road  
Bicester, Oxfordshire OX26 4UL  
***[www.pride-mobility.co.uk](http://www.pride-mobility.co.uk)***

## **B.V.**

(Authorised EU Representative)  
De Zwaan 3  
1601 MS Enkhuizen  
The Netherlands  
***[www.pride-mobility.nl](http://www.pride-mobility.nl)***

## **Italy**

Via del Progresso, ang. Via del Lavoro  
Loc. Prato della Corte  
00065 Fiano Romano (RM)  
***[www.pride-italia.it](http://www.pride-italia.it)***

## **France**

26 rue Monseigneur Ancel  
69800 Saint-Priest  
***[www.pridemobility.fr](http://www.pridemobility.fr)***

## **Spain**

Calle Las Minas Número 67  
Polígono Industrial Urtinsa II, de Alcorcón  
28923-Madrid  
***[www.pridemobility.com](http://www.pridemobility.com)***

