

CONTENTS

I. INTRODUCTION	4
II. SAFETY	6
III. SPECIFICATIONS	9
IV. DESCRIPTION	11
V. BATTERIES AND CHARGING	16
VI. OPERATION	21
VII. COMFORT ADJUSTMENTS	23
VIII. DISASSEMBLY AND ASSEMBLY	27
IX. TROUBLESHOOTING	31
X. CARE AND MAINTENANCE	32
XI. WARRANTY	33

I . I N T R O D U C T I O N

Welcome to Pride Mobility Products, Ltd. (Pride). Congratulations on the purchase of your new Pride Scooter. Your Scooter design combines the most advanced state-of-the-art components with modern, attractive styling. We are certain that the design features and trouble-free operation will add convenience to your daily living and ensure complete satisfaction.

At Pride, your safety is important to us. **Please read and follow all of the instructions in this manual before you attempt to operate your Scooter for the first time.** These instructions were produced for your benefit. Your understanding of these instructions is essential for the safe operation of your new Pride Scooter.

Pride is not liable for damage to property or personal injury arising out of the unsafe use of a Pride Scooter. Pride is also not liable for any property damage or personal injury arising out of the failure of any person and or/user to following the instructions and recommendations set forth in this manual or any other instructions or recommendations contained in other Scooter related literature issued by Pride or contained on the Pride Scooter itself.

This owner's manual is compiled from the latest specifications and product information available at the time of publication. We reserve the right to make changes as they become necessary. Any changes to our products may cause slight variations between the illustrations and explanations in this manual and the product you have purchased.

If you experience any problems with your Scooter that you are unable to solve, or if you do not feel capable of safely following any of the instructions and/or recommendations contained in this manual, please contact your authorised Pride provider for assistance.

Once you understand how to operate and take care of your Scooter, we are certain that it will give you years of trouble-free service and enjoyment.

Information Exchange

We want to hear your questions, comments, and suggestions regarding this manual. We would also like to hear about the safety and reliability of your new Pride Scooter and the service you received from your authorised Pride provider.

Please notify us of any change of address so we can keep you apprised of important information regarding safety, new products, and new options that can increase your ability to use and enjoy your Pride Scooter. Please feel free to write us at the address below:

Pride Mobility Products, Ltd.
Unit 106
Heyford Park Camp Road
Upper Heyford, Oxfordshire, OX25 5HA

I . I N T R O D U C T I O N

Pride Owners Club

As a Pride product owner, you are invited to register your product's warranty and enroll in the Pride Owners Club. You may do so by filling out and returning your enclosed registration card or by visiting Pride's web site at www.pridemobility.com. As a registered member, each time you visit our site you will have access to the most interactive and honest educational venue available today for people with mobility needs, their families, and friends.

From our home page, click on the button that reads "Owners Club" to enter a page dedicated to current and potential Pride product owners. You will gain access to interviews, stories, recreation ideas, daily living tips, product and funding information, and interactive message boards. Message boards invite you to speak with other Pride customers as well as Pride representatives who are available to assist you with any questions or concerns you may have. You will receive a free gift simply for registering with the Pride Owners Club.

My Authorised Pride Provider Is:

Name: _____

Address: _____

Quick Reference Information:

Scooter Model: _____

Serial Number: _____

Purchase Date: _____

NOTE: If you ever lose or misplace your warranty card or owner's manual, write to us and we will be glad to send you a new one immediately.

II. SAFETY

It is imperative that you read this entire manual and understand all of the safety precautions before you attempt to operate your new Celebrity for the first time.

SAFETY PRECAUTIONS

- Do not leave the key in the switch when your Celebrity is unattended.
- Make certain that the seat is locked into place and that the key is removed from the key switch before getting on or off of your Celebrity, and make certain that the seat is in a locked position when you are operating your Scooter.
- Reduce your Celebrity's speed when you are operating it on uneven terrain, soft surfaces, and around a corner.
- Proceed with extreme caution as you approach the downgrade of a ramp or incline and when driving near a raised surface or unprotected ledges and drop offs (kerbs, porches, stairs, etc.).
- Use extreme caution when operating your Celebrity on busy streets and in parking lots or shopping malls.
- Keep your hands on the tiller and your feet on the floorboard when you are operating your Celebrity.
- Make certain that the tyres are properly inflated (30 psi).
- Make certain that your Celebrity's batteries are properly secured when you are transporting your Scooter in another vehicle.
- Disconnect your Celebrity's batteries if you will not be using your Scooter for more than 48 hours.
- Battery posts, terminals and related accessories contain lead and lead compounds. Wash hands after handling.

WARNING! Do not expose the electronics to any type of moisture (rain, snow, mist, or wash) at any time. Such exposure can damage the electronics.

Never attempt to ride a Scooter that has been exposed to moisture until it has dried thoroughly.



Do not operate or store your Scooter where it may be exposed to inclement weather conditions such as rain, snow, mist, and below-freezing temperatures (such as storage on an outside car/van lift). Attempting to operate your Scooter in such conditions can damage the electronics and potentially result in loss of control.

Do not operate your Scooter in icy or slippery conditions or on salted surfaces (i.e., walks or roads). Such use may result in an accident, personal injury, or adversely affect the performance and/or safety of your Scooter.

Always protect batteries from freezing temperatures and never charge a frozen battery. This will damage the battery and may cause personal injury. Charging a battery in freezing conditions does not prevent the battery from freezing.

II. SAFETY

As you begin to use your Celebrity during your daily activities, you will encounter situations that may require some practice. Simply take your time as you operate your Scooter and you will soon be in full and confident control as you maneuver through doorways, on and off of elevators, up and down ramps, and over moderate terrain.

DOORS

- Determine if the door opens toward or away from you.
- Use your hand to turn the knob or push the handle or push-bar.
- Drive your Celebrity slowly forward to push the door open; or drive your Scooter slowly backwards to pull the door open.

ELEVATORS

Modern elevators have a door-edge safety mechanism that, when pushed, reopens the elevator door(s).

- If you are in the doorway of an elevator when the door(s) begin to close, push on the rubber door edge or allow the rubber door edge to contact your Scooter to reopen the door.
- Use care that pocketbooks, packages, or Celebrity accessories do not become caught in the elevator doors.

RAMPS AND OTHER INCLINES

More and more buildings have ramps with specified degrees of inclination, designed for easy and safe scooter access. Some ramps may have turning switchbacks that require you to have good cornering skills on your Celebrity.

- Take wide swings with your Scooter's front wheel(s) around any tight corners. If you do that, the rear wheels will follow a wide arc and will not cut the corner short, bump into, or get hung up on any railing corners.
- When driving down a ramp, keep your Celebrity's speed adjustment dial (see IV. "Description") set to the tortoise (slowest speed setting) to ensure a safely controlled descent.
- Avoid sudden stops and starts.

Other inclines may be natural or, if man-made, not designed specifically for scooters. Figures 1 and 2 illustrate your Celebrity's stability and its ability to climb grades under various weight loads and under controlled testing conditions.

Controlled incline testing was conducted with the Celebrity's seat in the highest position, adjusted backward on the seat base to the farthest rearward position. These tests show that your Celebrity's ability to travel up inclines is affected by your weight, your Scooter's speed, your angle of approach to the incline, and your Scooter setup.

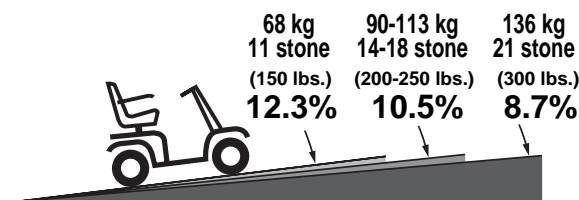


Figure 1. Maximum Recommended Incline Angle 3 Wheel

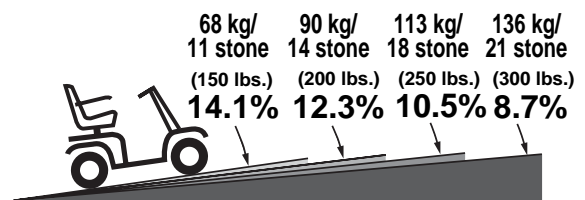


Figure 2. Maximum Recommended Incline Angle 4 Wheel

II. SAFETY

When you approach an incline, it is best to lean forward. See figures 3 and 4. This shifts the center of gravity of you and your Celebrity toward the front of the Scooter for improved stability.



CAUTION! Do not exceed the incline guidelines or any other specifications presented in this manual.



Figure 3. Normal Driving Position



Figure 4. Increased Stability Driving Position

DRIVING SURFACES

Your Celebrity was designed to provide optimum stability under normal driving conditions — dry, level surfaces composed of concrete or asphalt. However, Pride recognizes that there will be times when you will operate your Scooter on surfaces other than concrete or asphalt. For that reason, we also designed your Celebrity to perform admirably on packed soil, grass, and gravel.

- Feel free to use your Celebrity safely on lawns and in park areas.
- Avoid tall grass that can entangle the running gear.
- Packed soil, gravel, driveways, or roads will not present a problem for your Celebrity.
- Avoid loosely packed gravel and sand.
- If you feel unsure about a driving surface, avoid that surface.

III. SPECIFICATIONS

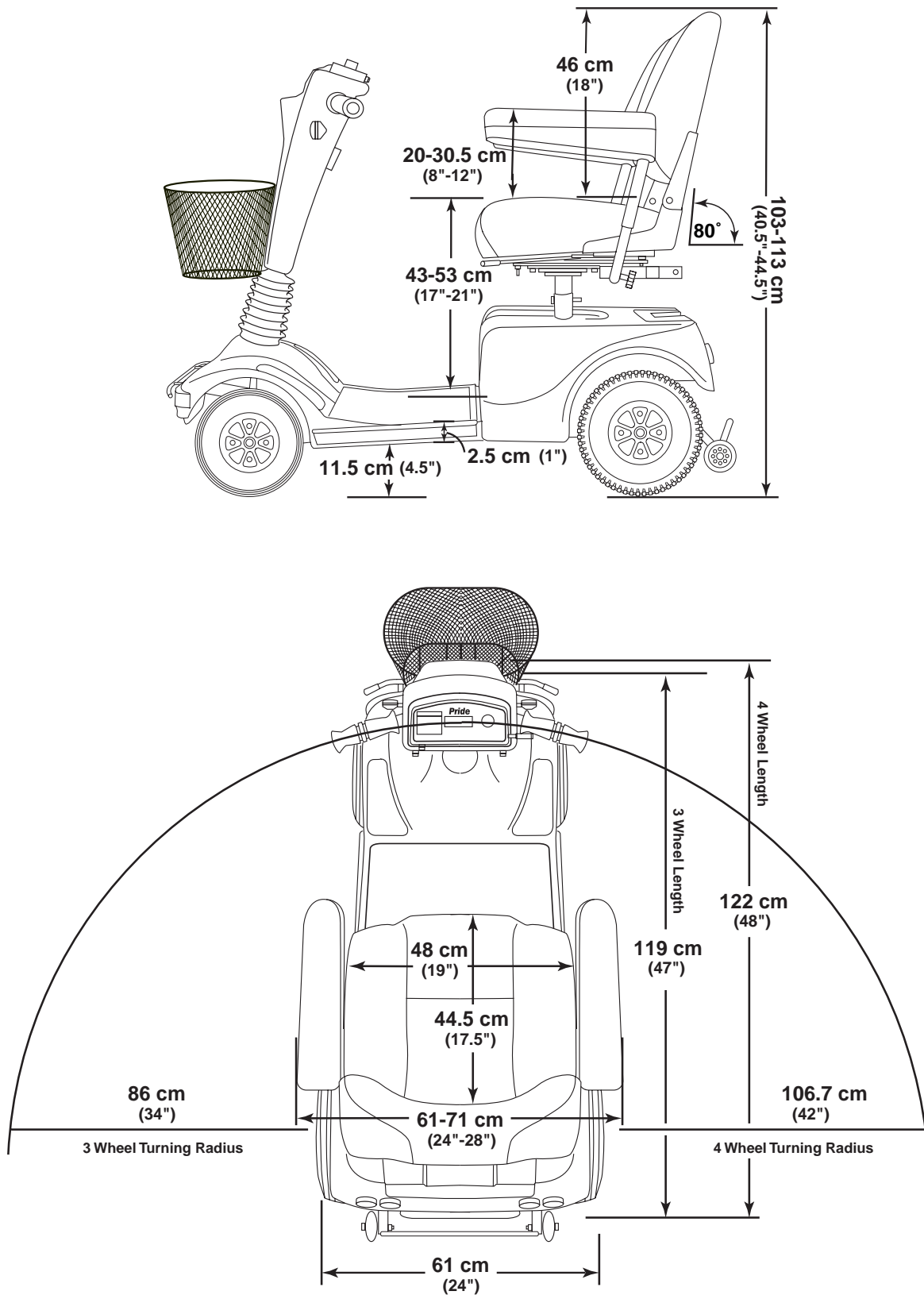


Figure 5. Celebrity Specifications

Specifications	
Length:	3 wheel: 119 cm (47 in) 4 wheel: 122 cm (48 in)
Width:	61 cm (24 in)
Tires:	Type: Pneumatic Front: 10 cm x 23 cm (4 in x 9 in) Rear: 10 cm x 25 cm (4 in x 10 in)
Weight Capacity:	136 kg/21 stone (300 lbs.) maximum
Battery Type (not included):	Two 12V, 32 amp hours (AH), U-1 type, sealed lead-acid (SLA) or gel cell
Horsepower:	1.4 HP (Peak)
Charger:	Onboard 5 amp charger
Speed (Max):	Variable up to 6.4 km/hr (4 mph) (60% reverse)
Maximum Grade:	Please refer to figures 1 and 2.
Range:	32 - 40 km (20 - 25 miles) per charge with 32 AH batteries
Turning Radius:	3 wheel: 86 cm (34 in), 4 wheel: 107 cm (42 in)
Body Colors:	Candy Apple Red, Forest Green, or Viper Blue
Seating:	Style: medium back with sliders Dimensions: 47 cm (18.5 in) width (usable) x 48 cm (19 in) height usable) x 48 cm (19 in) depth Seat Cover Material: Gray or beige vinyl Armrests: Match seat cover material User adjustable seat height from ground: 57 cm - 67 cm (22.5 in - 26.5 in) User adjustable seat height from scooter deck: 43 cm - 53 cm (17 in - 21 in)
Included Features:	Dynamic rear suspension system, adjustable seat height and positioning, height adjustable armrest, sliding seat, energy-saving auto shutoff feature, front basket, rear bumper, full light package 4 Wheel Only: Front bumper included
Brakes:	Electronic regenerative braking and electromechanical disc brake
Rear Wheel Drive:	Sealed transaxle, 24 VDC motor
Wheels:	Pride Micro-Mag aluminum alloy wheels in black, red, or gold
Tiller Type:	Infinitely adjustable
Freewheel Mechanism:	Freewheel release lever located on transaxle
Scooter Weight:	Total weight with batteries: 3 wheel: 76 kg (168 lbs) 4 wheel: 79 kg (174 lbs) Total weight without batteries: 3 wheel: 53,5 kg (118 lbs) 4 wheel: 56 kg (124 lbs) Component Breakdown: Front Section: 3 wheel: 16 kg (35 lbs) 4 wheel: 20 kg (45 lbs) Rear Section (without utility tray): 3 wheel and 4 wheel: 20.5 kg (45 lbs) Utility Tray: 3.9 kg (8.5 lbs) Rear Plastic Shroud: 1.5 kg (3.5 lbs) Seat: 16 kg (35 lbs) Batteries: 11 kg (25 lbs) each (12 volt, 32AH)
Front-to-rear Lockup:	Lock pin and cam lever system
Ground Clearance:	11.5 cm (4.5 in)
Optional Accessories:	Cane/crutch holder, walker holder, rearview mirror, cup holder, power seat, oxygen bottle holder, rear basket, canopy

IV. DESCRIPTION

Your Celebrity is an indoor/outdoor motorized electric scooter designed to enhance your personal mobility. It was designed to travel primarily on smooth surfaces such as sidewalks, roads, parking lots, floors, and driveways. For easy transportation or storage, you can disassemble your Celebrity into seven components. See figure 6. To decrease the rear section weight or to charge your batteries while your Scooter is disassembled, you can also remove the utility tray and its subcomponents from the rear section. For further information on disassembly, see VIII. “Disassembly and Assembly.” For further information on charging your batteries while your scooter is disassembled, see V. “Batteries and Charging.”

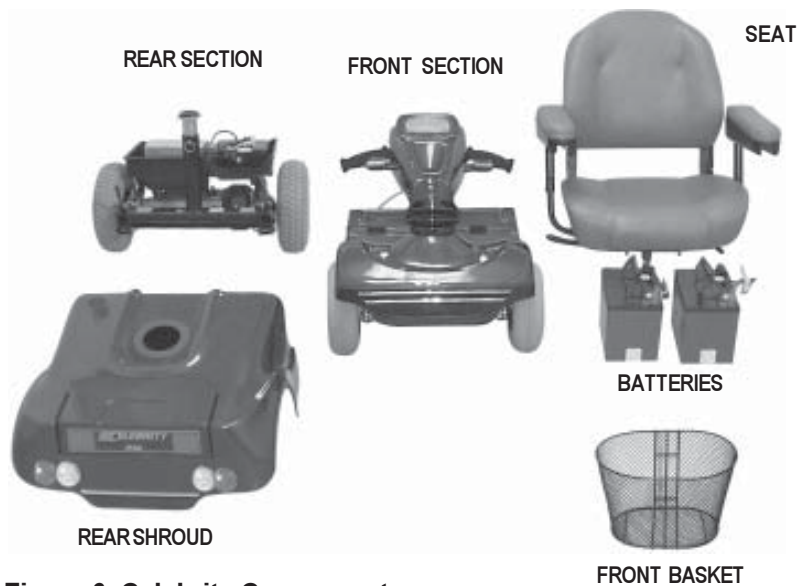


Figure 6. Celebrity Components

CONTROL CONSOLE ASSEMBLY

The control console assembly located on the front section houses all of the controls you need to operate your Celebrity. See figure 7.



CAUTION! Do not expose the control console assembly to moisture. In the event it does become exposed to moisture, do not attempt to operate your Celebrity until it has thoroughly dried.

Tiller Adjustment Lever

This lever allows you to adjust the tiller between the forward stop and the scooter deck. For tiller adjustment instructions, see VII. “Comfort Adjustments.”

Power Seat Switch (Optional)

If your Celebrity is equipped with a power seat, this switch enables you to raise and lower the seat. For power seat adjustment directions, see VII. “Comfort Adjustments.”



WARNING! Strict adherence to the following safety rules is vital:

- Do not attempt to raise or lower the seat while the Celebrity is in motion!
- Adjust the power seat only when your Celebrity is level and stationary!
- Drive the vehicle only with the seat in the lowest position!
- Do not operate your Scooter with the power seat elevated!

IV. DESCRIPTION

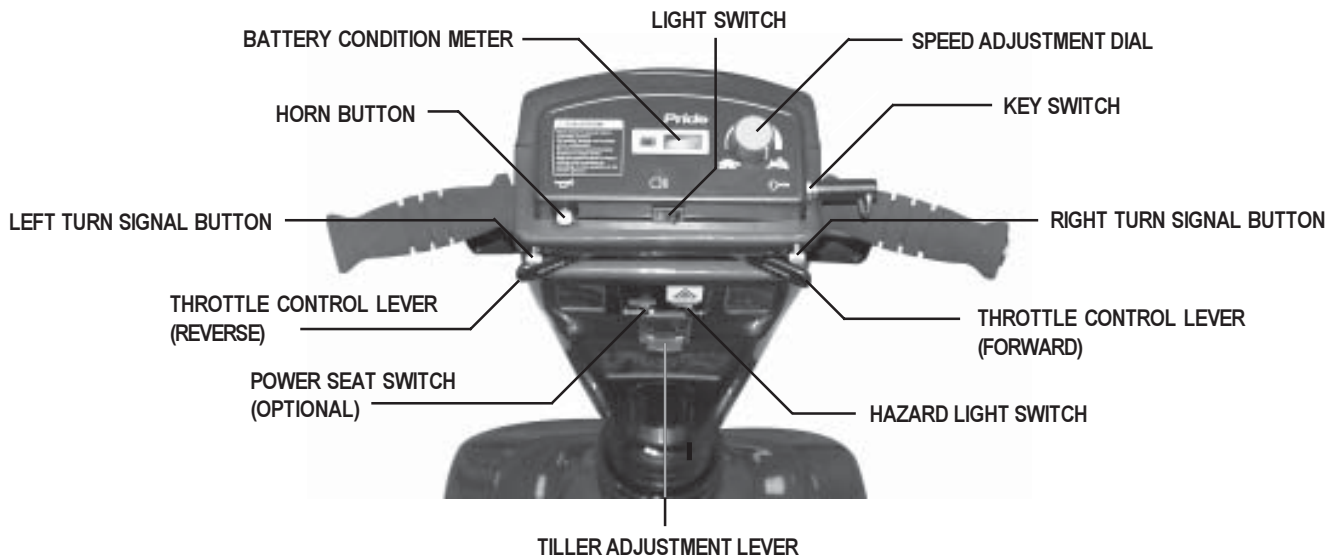


Figure 7. Control Console Assembly

Speed Adjustment Dial

This dial allows you to preselect and limit your Celebrity's top speed.

- Set the speed between the slowest (image of the tortoise) and the fastest (image of the hare) speed settings.

Key Switch

This switch enables you to power up and power down your Celebrity Scooter.

- Fully insert the key into the key switch to power up your Celebrity.
- Pull the key out to power down your Celebrity.

Left and Right Turn Signal Buttons

Use these buttons to turn on the left and right turn signal (amber) lights.

- Push the appropriate turn signal button once to illuminate the signal light prior to turning your Celebrity. Your Celebrity's turn signals are timed to shut off automatically.

Throttle Control Levers

These levers allow you to control the forward and the reverse speed up to the maximum speed you preset on the speed adjustment dial. For instructions on how to operate your Celebrity's throttle control, see VI. Operation."

Horn Button

This button activates a warning horn.

- Ensure the key is fully inserted into the key switch and push the horn button to sound the horn.

Hazard Light Switch

This switch enables you to control your Celebrity's front and rear (amber) hazard lights.

- Toggle this switch to turn the hazard lights on and off.

Light Switch

This switch enables you to control your Celebrity's headlight and running (rear red) lights.

- Toggle this switch to turn your headlight and running lights on and off.

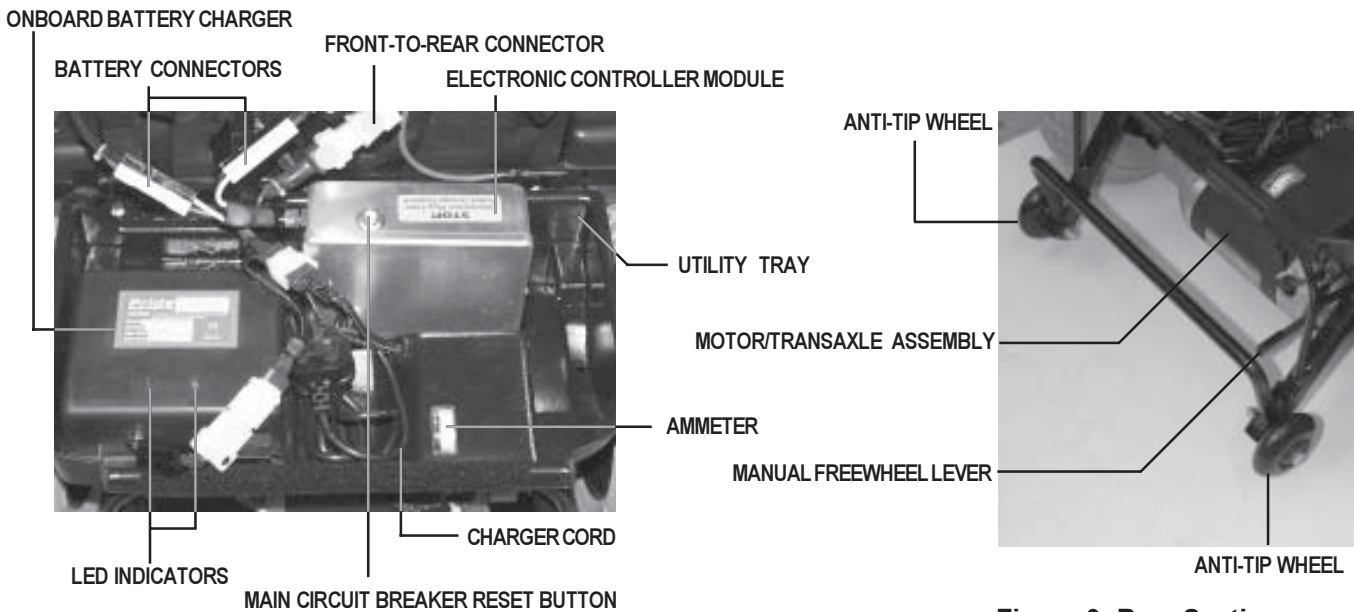
IV. DESCRIPTION

Battery Condition Meter

When your Celebrity's key is fully inserted to power on your scooter, this meter indicates the approximate battery voltage strength. For further information on battery charging, see V. "Batteries and Charging."

REAR SECTION

The onboard battery charger, charger cord, electronic controller module, main circuit breaker reset button, manual freewheel lever, and the motor/transaxle assembly are located on the rear section of your Celebrity. The anti-tip wheels are at the rearmost part of your Celebrity. See figures 8 and 9. Refer to VIII. "Disassembly and Assembly" for instructions on removing the rear shroud.



Motor/Transaxle Assembly

The motor/transaxle assembly is the electromechanical unit that converts the electrical energy of your Celebrity's batteries into the controlled mechanical energy that drives the Scooter's wheels.

Electronic Controller Module

The electronic controller module is located behind the batteries and at the forward right corner of your Celebrity's rear section. The module receives electrical signals from the console controls and sends power to the motor, the brakes, and the lighting system.



CAUTION! Do not expose the electronic controller module to moisture. If it does become exposed to moisture, do not attempt to operate your Celebrity until it has thoroughly dried.

Batteries

The batteries store the electrical energy that powers your Celebrity. For directions on charging your batteries, see V. "Batteries and Charging."

IV. DESCRIPTION

NOTE: For your convenience, you may remove the utility tray and its components and charge the batteries independently from your Scooter. See VIII. “Disassembly and Assembly” for instructions on removing the utility tray.

Onboard Battery Charger

The onboard battery charger converts household current (AC) to direct current (DC) and charges your Celebrity’s batteries. See V. “Batteries and Charging.”

- The charger is located on the utility tray.
- The charger is a black-colored box with a green and red Light Emitting Diode (LED) indicator on the exterior of the case.

NOTE: For your safety, use only the supplied onboard battery charger.

Main Circuit Breaker

When the voltage in your Celebrity’s batteries becomes low or your Scooter is heavily strained because of excessive loads, the main circuit breaker may trip to protect your Celebrity’s motor and electronics from damage.

- The main circuit breaker reset button is mounted on the electronic controller module cover. See figure 8.
- The main circuit breaker reset button pops out when the breaker trips.
- When the breaker trips, the entire electrical system of your Celebrity is shut down.
- Allow a minute or so for your Celebrity’s electronics to “rest.”
- Push in the reset button to reset the breaker.
- If the breaker trips frequently, you may need to charge your batteries more often or have your Pride provider perform a 50-amp load test on your Celebrity’s batteries.
- If the main circuit breaker trips repeatedly, see your authorized Pride provider for service.

Manual Freewheel Lever

Whenever you want to push your Celebrity for short distances, you can put it in manual freewheel mode.

WARNING! It is important to remember that when your Celebrity is in freewheel mode, the braking system is disengaged. Even though the motor of your Celebrity is disengaged from the drive system when your Scooter is put in manual freewheel mode, the motor can still run if the throttle lever is pushed.



Follow these safety rules when using the freewheel mode:

- **Do not disengage the drive motors when your Celebrity is on an incline; your Scooter could roll down on its own and cause injury!**
- **Before placing your Celebrity in or taking it out of freewheel mode, ensure the key is removed from the key switch.**
- **Never sit on your Scooter when it is in freewheel mode.**
- **When you have finished pushing your Scooter, always return it to the drive mode to lock the brakes.**

- The manual freewheel lever is located on the end of the motor/transaxle assembly at the right rear of the Celebrity.
- Pull up on the manual freewheel lever to disable the drive system and the brake system; you will then be able to push your Celebrity.

IV. DESCRIPTION

- Push down on the manual freewheel lever to reengage the drive system and the brake system and take your Celebrity out of freewheel mode.

Anti-tip Wheels

The anti-tip wheels are an integral and important safety feature of your Celebrity.



WARNING! Do not remove your Scooter's anti-tip wheels or modify your Scooter in any way that is not authorized by Pride .

OPTIONAL ACCESSORIES

For information concerning these optional accessories, see your authorized Pride provider.



WALKERHOLDER



REARBASKET



ARM MOUNT CANE/CRUTCH HOLDER



SINGLE CRUTCH HOLDER



OXYGEN BOTTLE HOLDER

V. BATTERIES AND CHARGING

Your Celebrity requires two long-lasting, 12V, deep-cycle batteries that are sealed and maintenance free. You can recharge the batteries with the convenient onboard 5-amp charging system. See figure 8.

Two important points to remember are:

- Charge your Celebrity's batteries with the supplied onboard battery charger prior to using it for the first time.
- Keep your batteries fully charged to keep your Celebrity running smoothly.

NOTE: Use only the onboard battery charger supplied with your Celebrity.

READING YOUR BATTERY VOLTAGE

The battery condition meter on the control console assembly indicates the approximate strength of your batteries. (The meter reads 24V when your batteries are fully charged.) To check the charge, you must first unplug the battery charger and then insert the key into the key switch.

You can also use the ammeter to check your batteries' charge. The ammeter is located on the utility tray under the rear shroud. See figure 8. (The amperage reading should be at or near zero (0) when the batteries are fully charged.) The battery charger must be plugged into a wall outlet to obtain an ammeter reading.

CHARGING YOUR BATTERIES

You can charge your Celebrity's batteries with the Scooter completely assembled or with the Scooter disassembled, as described in VIII. "Disassembly and Assembly." We strongly recommend you charge your batteries while your Scooter is fully assembled. However, if you are traveling and you disassemble your Scooter to transport it, you may find it necessary to charge your batteries. In such instances, it is easier to take out the utility tray and batteries to perform the charging. See figure 10.

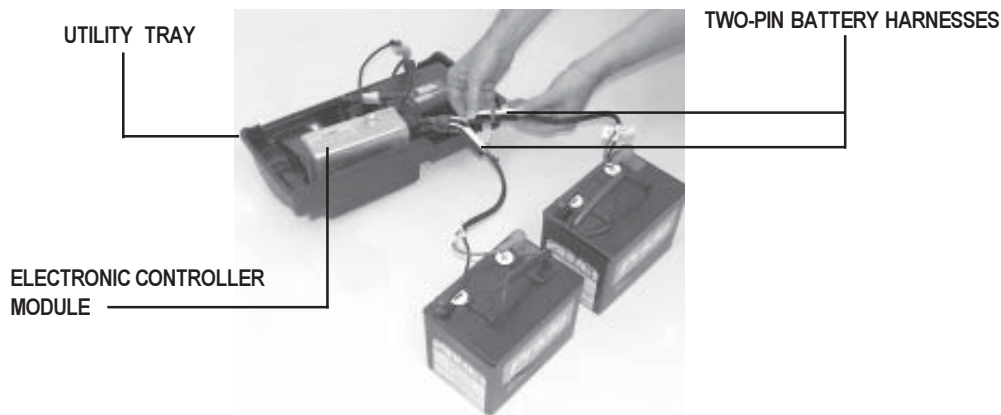


Figure 10. Utility Tray and Batteries

Follow these steps to safely charge your batteries while your Scooter is fully assembled.

1. Position your Scooter close to a standard wall outlet.
2. Remove the key from the control console assembly.
3. Extend the charger power cord and plug it into the wall outlet. We recommend you charge the batteries for 8 to 14 hours.
4. When the batteries are fully charged, unplug the charger power cord from the wall outlet, recoil the cord, and place it neatly inside the utility tray.

V. BATTERIES AND CHARGING

NOTE: There is a charger inhibit on your Celebrity. Your Scooter does not run and the battery condition meter does not operate while the batteries are charging.

Follow these steps to safely charge your batteries with the utility tray and batteries removed.

1. Disassemble your Scooter, as described in VIII. “Disassembly and Assembly.”
2. Place your utility tray and batteries close to a standard wall outlet.
3. Plug both the two-pin battery harnesses into the adjoining harnesses extending from the electronic controller module on the utility tray. See figure 10.
4. Extend the charger power cord and plug it into the wall outlet. We recommend you charge your Celebrity’s batteries for 8 to 14 hours.
5. When the batteries are fully charged, unplug the charger power cord from the wall outlet, recoil the cord, and place it neatly inside the utility tray.
6. Unplug both battery harnesses.
7. Reassemble your Scooter as described in VIII. “Disassembly and Assembly.”

FREQUENTLY ASKED QUESTIONS (FAQs)

How does the charger work?

When your Celebrity’s battery voltage is low, the charger works harder and sends more electrical current to the batteries to bring up their charge. As the voltage of the batteries approaches a full charge, the charger sends less electrical current to the batteries. When the batteries are fully charged, the current sent to them from the charger is at nearly zero amperage. Therefore, when the charger is plugged in, it maintains the charge on your Celebrity’s batteries but does not overcharge them. We do not recommend that you charge your Celebrity’s batteries for more than 24 consecutive hours.

What does the LED on the charger indicate?

The onboard battery charger is equipped with two LEDs that indicate the charging status of your Scooter’s batteries. The red LED lights up to indicate the battery charging is in progress. The green LED flashes when your Scooter’s batteries reach full charge.

Can I use a different charger?

For the safest, most efficient, and balanced charging of your Celebrity’s batteries, you should simultaneously charge both batteries using only the manufacturer supplied onboard battery charger.

How often must I charge the batteries?

Two major factors must be considered when deciding how often to charge your Celebrity’s batteries: all day Scooter use on a daily basis and infrequent Scooter use.

With these considerations in mind, you can determine just how often and for how long you should charge your Celebrity’s batteries. We designed the onboard charger so that it does not overcharge your Scooter’s batteries; however, you may encounter some problems if you do not charge your batteries often enough and if you do not charge them on a regular basis. Following the five guidelines below provides safe and reliable battery operation and charging.

BATTERIES AND CHARGING

- If you use your Celebrity daily, charge its batteries as soon as you finish using it for the day. Your Scooter will be ready each morning to give you a “full day” of service. We recommend you charge your Celebrity’s batteries for 8 to 14 hours after daily use.
- If you use your Celebrity once a week or less, charge its batteries at least once a week for 12 to 14 hours at a time.
- Keep your Celebrity’s batteries fully charged.
- Avoid deeply discharging your Celebrity’s batteries.
- Do not charge your Celebrity’s batteries for more than 24 consecutive hours.

How can I get maximum range or distance per charge?

Rarely will you have ideal driving conditions — smooth, flat, hard driving surfaces with no wind or curves. You will often face hills, sidewalk cracks, uneven and loosely packed surfaces, curves, and wind. All of these driving conditions affect the distance or running time per battery charge. The following are a few suggestions for obtaining the maximum range per battery charge.

- Always fully charge your Celebrity’s batteries prior to your daily use.
- Maintain 30 psi (pounds per square inch) in all of your Celebrity’s tyres.
- Plan your route ahead to avoid as many hills, cracked, broken, or soft surfaces as possible.
- Limit your baggage weight to essential items.
- Try to maintain an even speed while your Celebrity is in motion.
- Avoid stop-and-go driving.

What type and size of battery should I use?

We recommend deep-cycle batteries that are sealed and maintenance free. Both sealed lead-acid (SLA) and gel cell are deep-cycle batteries that are similar in performance in your Celebrity. Do not use wet-cell batteries, which have removable caps.



CAUTION! Do not remove the caps from sealed batteries. Water cannot be added to sealed batteries. Cap removal voids the battery warranty and may cause damage to the batteries and to your Celebrity.

Use these specifications to reorder deep-cycle batteries.

Type: Deep-cycle (SLA or gel cell)
Size: U-1
Voltage: 12 volts each
Amperage: 32 AH (amp hours)

To change a battery in your Celebrity:

1. Remove the seat and the rear shroud. See VIII. “Disassembly and Assembly.”
2. Disconnect the battery cables from the electronic controller module.
3. Disconnect the battery cables from the battery terminals.
4. Remove the old battery.
5. Place a new battery in the battery well.
6. Connect the red battery cable to the positive (+) battery terminal.
7. Connect the black battery cable to the negative (-) battery terminal.

V. BATTERIES AND CHARGING

8. Reconnect the battery cables to the electronic controller module.
9. Reinstall the rear shroud and the seat.



WARNING! Battery posts, terminals and related accessories contain lead and lead compounds. Wash hands after handling.

Why do my new batteries seem weak?

Deep-cycle batteries employ a different chemical technology than that used in car batteries, nickel-cadmium batteries (nicads), or in other common battery types. Deep-cycle batteries are specifically designed to provide power, drain down their charge, and then accept a relatively quick recharge.

We work closely with our battery manufacturer to provide batteries that best suit your Celebrity's specific electrical demands. Fresh batteries arrive daily at Pride and are shipped fully charged to our customers. During shipping, the batteries may encounter temperature extremes that may influence their initial performance. Heat diminishes the charge on the battery; cold slows the available power and extends the time needed to recharge the battery.

It may take a few days for the temperature of your Celebrity's batteries to stabilize and adjust to their new room or ambient temperature.

More importantly, it takes a few charging cycles (a partial drain followed by a full recharge) to establish the critical chemical balance that is essential to a deep-cycle battery's peak performance and long life.

Please follow these steps to properly break in your Celebrity's new batteries for maximum efficiency and service life.

1. Fully recharge any new battery prior to its initial use. This initial charging cycle brings the batteries up to about 88% of their peak performance level.
2. Operate your new Celebrity in familiar and safe areas. Drive slowly at first, and do not travel too far from your home or familiar surroundings until you have become accustomed to your Celebrity's controls and have properly broken in your Scooter's batteries.
3. Fully recharge the batteries. This recharge should bring the batteries up to about 90% of their peak performance level.
4. Operate your Celebrity again.
5. Fully recharge the batteries again.
6. After four or five charging cycles, the batteries are able to receive a charge of 100% of their peak performance level and are able to last for an extended period of time.

How can I ensure maximum battery life?

Fully charged deep-cycle batteries provide reliable performance and extended battery service life. Keep your Celebrity's batteries fully charged whenever possible. Batteries that are deeply discharged, infrequently charged, or stored without a full charge may be permanently damaged and cause unreliable performance and limited service life.

V. BATTERIES AND CHARGING

How should I store my Celebrity and its batteries?

If you plan on not using your Celebrity for an extended period of time, it is best to:

- Fully charge its batteries prior to storage.
- Disconnect the battery harnesses from the electronic controller module.
- Store your Celebrity in a warm, dry environment.
- Avoid storing your Celebrity where it will be exposed to temperature extremes.



CAUTION! If your Celebrity's batteries do become frozen, do not attempt to charge them. Cold or frozen batteries should be allowed to warm up for several days prior to recharging.

For prolonged storage, you may wish to place several boards under the frame of your Celebrity to raise your Scooter off the ground and take the weight off the tyres. This reduces the possibility of flat spots developing on the areas of the tyres contacting the ground.

VI. OPERATION

Familiarize yourself with the following checklist before you get on your Celebrity. Some of the checks must be performed prior to getting on your Scooter.

PRE-RIDE ADJUSTMENTS AND CHECKS

- Have you fully charged the batteries? See V. “Batteries and Charging.”
- Is the manual freewheel lever in the drive (down) position? See IV. “Description.” Never leave the manual freewheel lever pulled up unless you are manually pushing your Celebrity.
- Is your proposed path clear of people, pets, and obstacles?
- Have you planned your route to avoid adverse terrain and as many inclines as possible?
- Are you positioned comfortably in the seat? See “Getting On Your Scooter,” below.
- Is the seat at the proper height? See VII. “Comfort Adjustments.”
- Is the seat locked securely in place? See VII. “Comfort Adjustments.”
- Is the tiller handle at a comfortable setting and locked securely in place? See VII. “Comfort Adjustments.”
- Is the key fully inserted into the key switch? See IV. “Description.”
- Is the speed adjustment dial set to a slow setting? See IV. “Description.”
- Are you grasping the handgrips with a thumb resting on each side of the throttle lever? See IV. “Description.”
- Does your Celebrity’s horn work properly?

GETTING ON YOUR SCOOTER

1. Make certain that the key is removed from the key switch.
2. Stand at the side of your Scooter.
3. Push down on the seat lock lever and rotate the seat until it faces you.
4. Make certain that the seat is locked securely in position.
5. Position yourself comfortably and securely in the seat.
6. Push down on the seat lock lever and rotate the seat until you face forward.
7. Make certain that the seat is locked securely in position.
8. Make certain that your feet are safely on the floorboard.

OPERATING YOUR SCOOTER

After planning your route:

1. Set the speed adjustment dial to your desired speed.
2. Insert the key into the key switch.
3. With your hands on the handgrips, use your thumb to push the right throttle control lever to disengage your Celebrity’s brakes and move forward; the electric brake automatically disengages and your Scooter accelerates smoothly to the speed you set with the speed adjustment dial.
4. Pull on the left handgrip to steer your Scooter to the left.
5. Pull on the right handgrip to steer your Scooter to the right.
6. Move the tiller to the center position to drive straight ahead.
7. Release the throttle lever to decelerate and come to a complete stop. The electric brake automatically engages when your Scooter comes to a stop.
8. To move in reverse, use your thumb to push the left throttle control lever to disengage your Celebrity’s brakes and move rearward.

V I . O P E R A T I O N

GETTING OFF OF YOUR SCOOTER

1. Bring your Scooter to a complete stop.
2. Make certain that the key is removed from the key switch.
3. Push down on the seat lock lever and rotate the seat until you are facing toward the side of your Scooter.
4. Make certain that the seat is locked securely in position.
5. Carefully get out of the seat and stand to the side of your Scooter.
6. You may, if you wish, leave the seat facing to the side to facilitate boarding your Scooter the next time you are going to operate it.

VII. COMFORT ADJUSTMENTS

TILLER ANGLE ADJUSTMENT

You can adjust the tiller infinitely between the forward stop and the scooter deck.



WARNING! Remove the key before adjusting the tiller. Never attempt to adjust the tiller while the Scooter is in motion.

1. Pull up on the tiller adjustment lever. See figure 11.
2. Move the tiller to a comfortable position.
3. Release the tiller adjustment lever. The tiller will remain in that position.

NOTE: In order to lower the tiller to the scooter deck, you must first remove the seat and both batteries. See VIII. "Disassembly and Assembly."

SEAT HEIGHT ADJUSTMENT

The seat can be repositioned to one of five different heights. See figure 12.

1. Remove the seat from your Celebrity. See VIII. "Disassembly and Assembly."
2. Use the attached ring to pull and remove the ball detent pin from the seat post tower.
3. Raise or lower the seat post to the desired seat height.
4. Hold the seat post at that height and match up the holes in the seat post with the seat post tower.
5. Fully insert the ball detent pin.
6. Replace the seat.

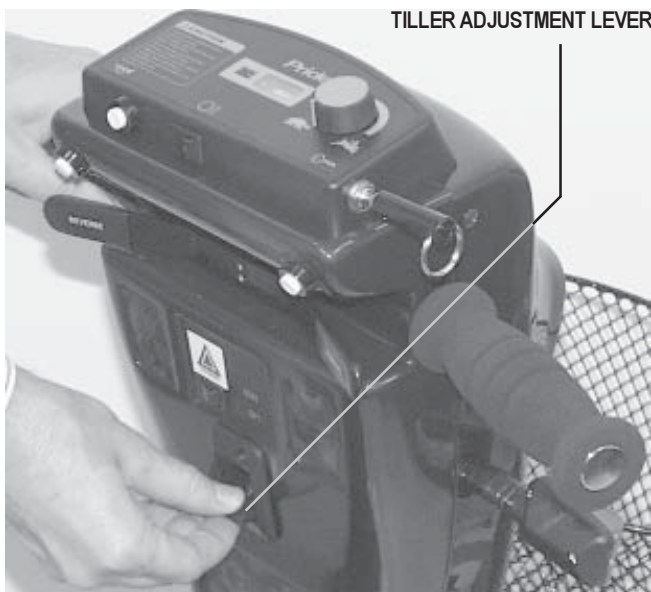


Figure 11. Tiller Adjustment

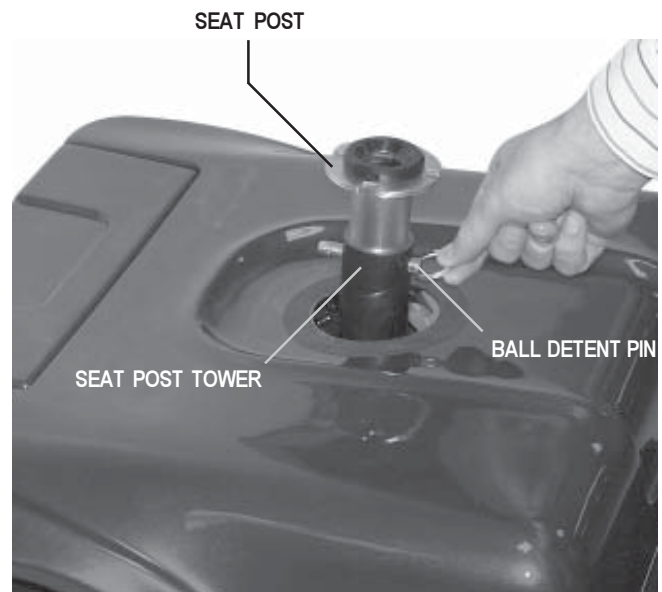


Figure 12. Seat Height Adjustment

VII. COMFORT ADJUSTMENTS

FRONT-TO-BACK SEAT ADJUSTMENT

The Celebrity is equipped with a sliding seat that is operated like an automobile seat. You can reposition the Celebrity's seat forward or rearward.

1. Pull out the front-to-back seat release lever. See figure 13.
2. Move the seat forward or rearward.
3. Release the front-to-back seat release lever.
4. Ensure the seat is in a locked position before proceeding. If the seat is not locked into position, gently rock the seat back and forth until you hear the lever click.

SEAT ROTATION

The seat lock lever locks the seat in one of four positions.

1. Push down on the seat lock lever to unlock the seat. See figure 13.
2. Rotate the seat to the desired position.
3. Release the seat lock lever to lock the seat securely in place.

ARMREST WIDTH ADJUSTMENT

The armrest width of your Celebrity can be adjusted inward or outward. See figure 13.

1. Turn the armrest adjustment knobs at the back of the seat frame counterclockwise to loosen.
2. Slide the armrests in or out to the desired width.
3. Tighten the armrest adjustment knobs.

NOTE: The armrests also pivot upward to make getting on and off of your Celebrity easier.

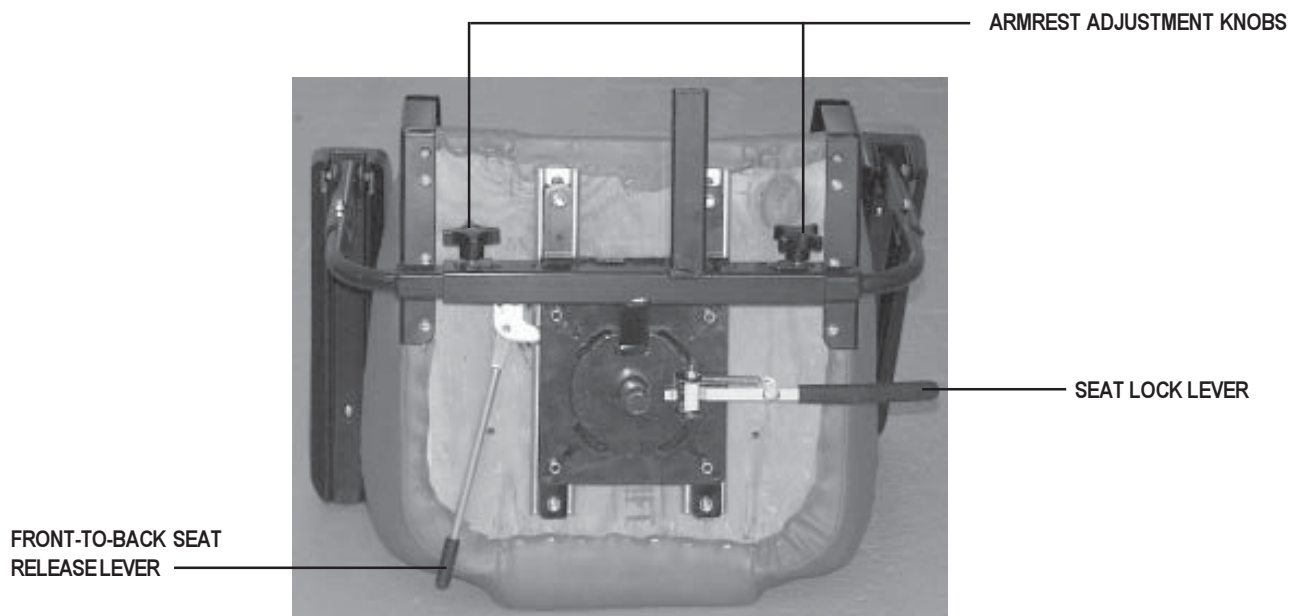


Figure 13. Seat Adjustments

VII. COMFORT ADJUSTMENTS

ARMREST HEIGHT ADJUSTMENT

You will need the following tools to adjust the height of the armrests:

- 5/32" hex key
- 1/8" hex key
- 7/16" wrench

1. Loosen the setscrew on the side of the height adjustment tube with the 1/8" hex key. See figure 14.
2. Loosen and remove the acorn nut and screw holding the height adjustment tube in place.
3. Raise or lower the height adjustment tube to the desired height.
4. Align the holes in the adjustment tube with the holes in the armrest upright.
5. Insert the screw through the holes in both the height adjustment tube and the armrest upright.
6. Install and tighten the acorn nut.
7. Tighten the setscrew on the side of the height adjustment tube.
8. Repeat for the other armrest.

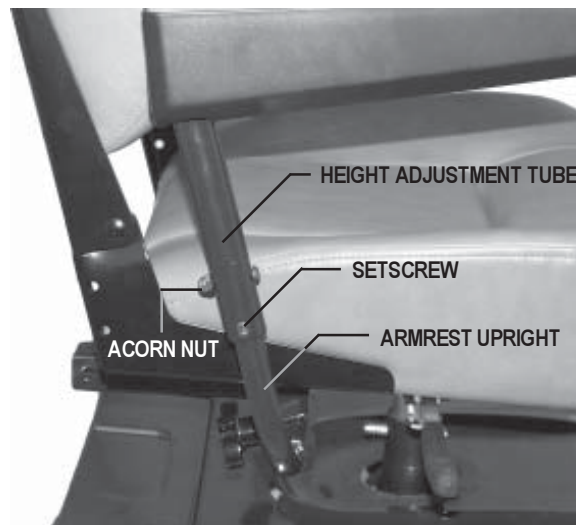


Figure 14. Armrest Height Adjustment

POWER SEAT ACTUATOR (OPTIONAL)

Your Celebrity may be equipped with a power seat actuator. The actuator raises and lowers the seat automatically. See figure 15.



WARNING! The power seat actuator is intended for operation only while the vehicle is stationary and on a level surface. Its purpose is to aid you in reaching objects.

Strict adherence to the following safety rules is vital to your safety:

- Do not attempt to raise or lower the seat while in motion!
- Do not operate your Scooter with the power seat elevated!
- Drive the vehicle only with the seat in the lowest position.

VII. COMFORT ADJUSTMENTS

OPERATING YOUR POWER SEAT

1. Ensure your Scooter is level and stationary.
2. Toggle on the power seat switch.
3. To raise the power seat, place your hands on the handgrips and use your thumb to push the right throttle control lever, located on the Scooter's control console assembly.
4. Release the lever when you have attained your desired height.
5. To lower the power seat, place your hands on the handgrips and use your thumb to push the left throttle control lever, located on the Scooter's control console assembly.
6. Release the lever when you have attained your desired height.
7. Ensure your seat is in the lowest position and toggle off the power seat switch before you attempt to drive your Scooter again.

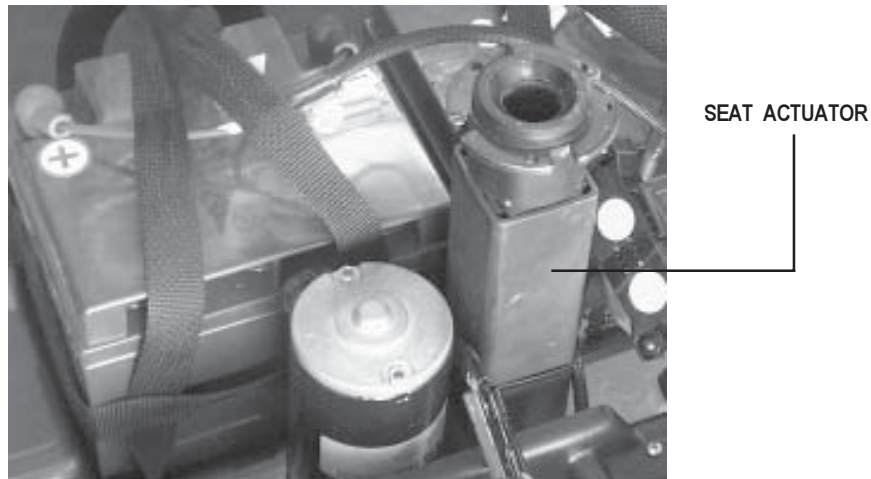


Figure 15. Power Seat Actuator (Optional)

VIII. DISASSEMBLY AND ASSEMBLY

No tools are required to disassemble or assemble your Celebrity. Always disassemble or assemble your Celebrity on a level, dry surface with sufficient room for you to work and move around your Scooter. Keep in mind that the disassembled sections of the Celebrity take up more floor space than the assembled Celebrity.

DISASSEMBLY

You can disassemble the Celebrity into seven or eight pieces: the seat, the front frame, the front basket, the rear frame, the rear shroud, and the two batteries; you can also remove the utility tray from the rear frame, if necessary. Place your Scooter in an area where you have sufficient clearance to move the parts around. You need approximately 1.5 meters in all directions. You may need assistance to lift some of the Scooter components. See III. “Specifications” for individual component weights.

1. Place the freewheel lever in the drive (down) position.
2. Push and hold down the seat lock lever to unlock it and lift the seat up and off of the Celebrity. See figure 16.
3. Gently lift the rear shroud off of the Celebrity. See figure 17. You will not be able to completely remove the rear shroud because of the rear light harness connection.



Figure 16. Removing the Seat



Figure 17. Removing the Shroud

VIII. DISASSEMBLY AND ASSEMBLY

4. Unplug the rear light harness. See figure 18.
5. Unplug the large, 9-pin white front-to-rear connector that attaches the front control console harness to the utility tray. See figure 19.



Figure 18. Unplugging the Rear Light Harness

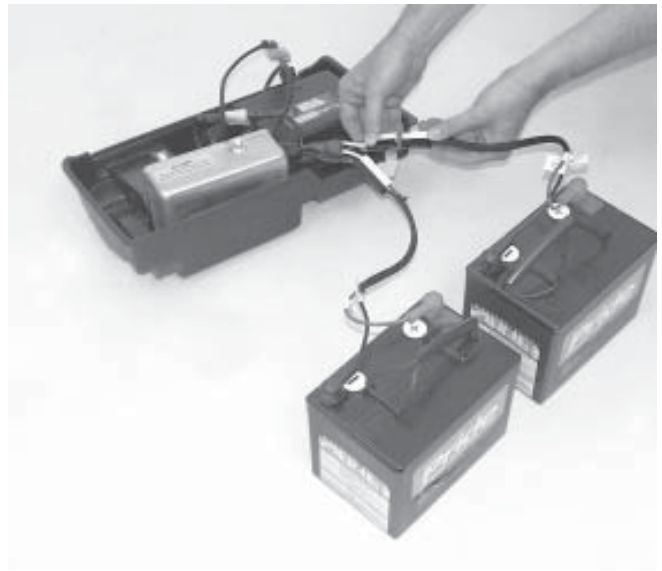


Figure 19. Unplugging the Front-to-Rear Connector

6. Unplug both 2-pin battery harnesses and lift both batteries off of the Celebrity. See figures 20 and 21.



CAUTION! Failing to unplug both battery harnesses and the front-to-rear connector prior to further disassembly could result in permanent damage to your Celebrity.

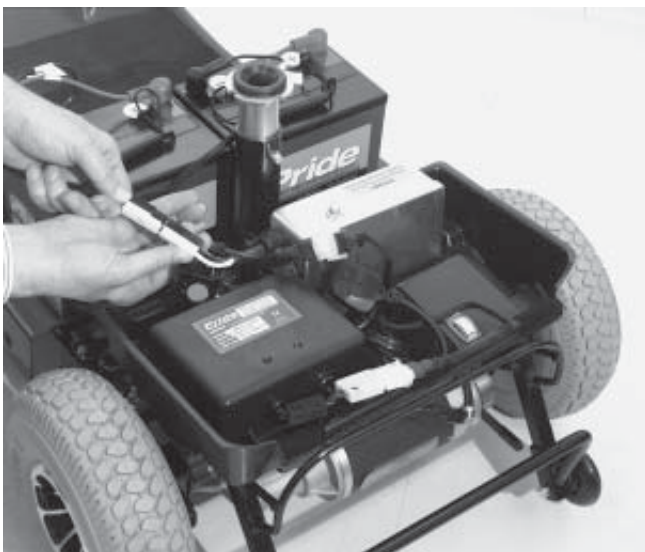


Figure 20. Unplugging the Battery Harnesses



Figure 21. Lifting the Batteries

VIII. DISASSEMBLY AND ASSEMBLY

7. If you plan to remove the utility tray, disconnect the 6-pin motor harness plug. See figure 22. If you do not plan to remove the utility tray, go to step 9.

NOTE: You can decrease the weight of the rear component by removing the utility tray.

8. (Optional) Lift up and remove the utility tray if you want to decrease the weight of the rear component. See figure 23.
9. Pull up on and remove the front basket.



Figure 22. Disconnecting the Motor Harness



Figure 23. Lifting the Utility Tray

10. Grab the handle grip on the tiller, pull upward on the release lever, and gently lower the tiller down to the center of the Celebrity chassis until it is fully lowered.
11. Remove the ball detent pins and lift the locking cam levers. See figures 24 and 25.

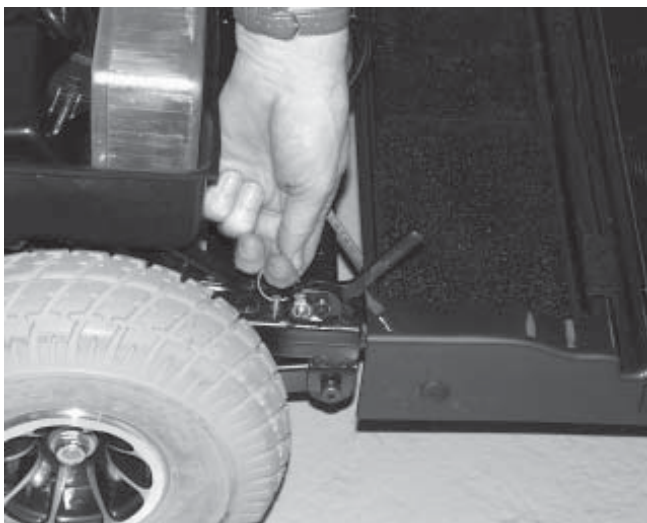


Figure 24. Removing Ball Detent Pins with Rings

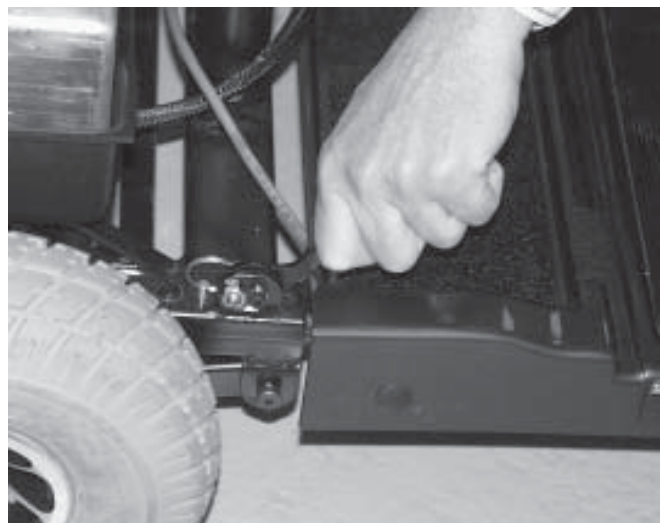


Figure 25. Lifting Up Locking Cam Levers

VIII. DISASSEMBLY AND ASSEMBLY

12. Separate the front section from the rear section. See figure 26.



Figure 26. Separating the Frame Sections

ASSEMBLY

1. Place the freewheel lever in drive (down) position.
2. Position the front and rear sections next to each other.
3. Tilt the rear end to a horizontal position and insert the longer tube of the front end into the rear section first; make sure that the locking cam levers are vertically positioned and the locking pins are removed.
4. Slide the two sections of the unit together until the front half reaches its insertion limit.
5. Secure the front and rear sections with ball detent pins.
6. Ensure the tiller is in an upright position.
7. Push the frame lock levers back to their locked (down) position.
8. Clip the front basket onto the front of the tiller.
9. If you removed the utility tray from the rear component, replace the tray by aligning the reusable fasteners on the utility tray with those on the rear component; gently press down on the utility tray to ensure it is secure.
10. Plug the large 9-pin white plastic connector from the front section of the Celebrity into the mating plug found on the control assembly cover on the utility tray at the rear of your Scooter. The two orange dots present on both plugs should be adjacent to each other and enable quick plug mating.
11. Put the batteries in place and plug the 2-pin battery harnesses into the adjoining harnesses that are also located on the control assembly.
12. If you removed the utility tray from the rear component, connect the 6-pin motor harness plug.
13. Gently place the rear shroud over the seat pedestal.
14. Connect the rear light harness. Make sure that the rear plastic shroud does not make any contact with the rear wheels.
15. Slide the shroud down in place.
16. Carefully lift the seat and slide the small seat post (on the seat bottom) into the seat post tower.
17. Rotate the seat until it locks into place.

IX. TROUBLESHOOTING

Any electromechanical device occasionally requires some troubleshooting. However, most of the problems that may arise can usually be solved with a bit of thought and common sense. Many of these problems occur because the batteries are not fully charged or because the batteries are worn down and can no longer hold a charge.

PROBLEM	POSSIBLE SOLUTIONS
All of my Scooter systems appear to be “dead.”	<p>One of the following actions may eliminate the problem.</p> <ul style="list-style-type: none"> ■ Remove and reinsert the key in the key switch. ■ Ensure the batteries are fully charged. ■ Push in the main circuit breaker reset button. ■ Ensure both battery harnesses are firmly connected to the electronic controller assembly and to the battery terminals. ■ Ensure the front-to-rear harness connector is firmly connected.
My Scooter’s battery condition meter shows a full charge, but my Scooter does not move when I push the throttle.	<p>Ensure your Scooter was not left in freewheel mode. (Push down on the manual freewheel lever to restore normal operation.)</p> <p><i>NOTE: When the manual freewheel lever is pulled up, your Scooter’s brakes are disengaged and all power to the transaxle is cut.</i></p>
My scooter’s main circuit breaker repeatedly trips.	<p>One of the following actions may eliminate the problem.</p> <ul style="list-style-type: none"> ■ Charge your Scooter’s batteries more frequently. ■ Have both of your Scooter’s batteries load tested by your authorized Pride provider. ■ Obtain a battery load tester at most any automotive parts store; follow the directions supplied with the load tester.
My Scooter’s battery condition meter dips way down and the motor surges or hesitates when I press the throttle control lever.	<p>One of the following actions may eliminate the problem.</p> <ul style="list-style-type: none"> ■ Fully charge your Scooter’s batteries. ■ Have your authorized Pride provider load test each battery. ■ Obtain a battery load tester at most any automotive parts store; follow the directions supplied with the load tester.

If you experience any problems with your Celebrity that you are not able to solve, immediately contact your authorized Pride provider for information, maintenance, and service.

X . C A R E A N D M A I N T E N A N C E

Your Celebrity requires a minimal amount of care and maintenance. If you do not feel confident in your ability to perform the maintenance listed below, you may schedule inspection and maintenance at your authorized Pride provider.

The following areas require periodic inspection and/or care and maintenance.

TYRE PRESSURE:

- We recommend you maintain the tyre pressure at 30 psi for optimum Scooter performance; overinflating a tyre can cause it to explode.

TYRE CONDITION AND TREAD WEAR:

- Regularly inspect your Celebrity's tyres for signs of wear.
- Use a rubber conditioner on your Celebrity's tyres to preserve them.
- Do not put rubber conditioner on tread area of tyres; the tyres may become dangerously slippery.

EXTERIOR SURFACES:

- Bumpers and trim benefit from an occasional application of rubber or vinyl conditioner.
- Do not use rubber or vinyl conditioner on your Celebrity's vinyl seat; it may become dangerously slippery.

BATTERY TERMINAL CONNECTIONS:

- Ensure the terminal connections remain tight and uncorroded.
- Ensure the batteries sit flat in the battery wells.
- Ensure the battery terminals face the rear of your Celebrity.

WIRING HARNESES:

- Regularly check all wiring connections.
- Regularly check all wiring insulation, including the charger power cord, for wear or damage.
- Repair or replace any damaged connector, connection, or insulation before you use your Celebrity.

ABS PLASTIC SHROUDS:

- Apply a light coat of car wax to the shrouds to help retain their high gloss; the shrouds are formed from durable ABS plastic and are coated with an advanced formula urethane paint.

AXLE BEARINGS AND THE MOTOR/TRANSAXLE ASSEMBLY:

- You do not need to lubricate these items, as they are all prelubricated and sealed.

CONSOLE, CHARGER, AND ELECTRONIC CONTROLLER MODULE:

- Keep these areas away from moisture.
- Let any of these areas dry thoroughly before operating your Celebrity if they have been exposed to moisture.

STORAGE:

- Refer to "How should I store my Celebrity and its batteries?" in V. "Batteries and Charging."

XI. WARRANTY

TWO-YEAR LIMITED WARRANTY

Structural frame components, including: platform, fork, seat post, and frame welds.
Drive train, including: differential, motor, and brake.

ONE-YEAR LIMITED WARRANTY

Your Pride Scooter is fully guaranteed for twelve (12) months from the date of purchase against faults arising due to defects in manufacture or materials. This warranty does not detract from, but is in addition to your legal rights.

All electronic parts, including controllers and battery chargers, have a one (1) year warranty. Servicing to the controller or battery charger must be carried out by your local Pride provider. Any attempt to open or dismantle these items renders the guarantee void on that item.

NOT COVERED UNDER WARRANTY

This guarantee does not extend to those items which may need replacement due to normal wear and tear (tyres, belts, bulbs, upholstery, plastic shrouds, motor brushes, fuses, and batteries), or damage to the product caused by misuse or accident for which Pride or its agent cannot be held responsible. This warranty does not include labor or service calls.

BATTERIES

Batteries are covered by a twelve (12) month warranty from the original manufacturer.

Gradual deterioration in performance due to being left in a discharged state, left in cold conditions for long periods of time, or worn out through heavy use is not covered.

SERVICE CHECKS AND WARRANTY SERVICE

Warranty service can be performed by an authorized Pride provider. Please contact your local Pride provider for advice on the current cost affecting the service visit.

NOTES