

# *Celebrity XL*

Owner's Manual



*The Ultimate In Style & Performance<sup>®</sup>*

**Pride**  
Mobility Products Ltd.

*Unit 106  
Heyford Park Camp Road  
Upper Heyford Oxfordshire OX25 5HA*

*[www.pridemobility.com](http://www.pridemobility.com)*

# SAFETY GUIDELINES

Please read and follow all instructions in this owner's manual before attempting to operate your Scooter for the first time. If there is anything in this manual you do not understand, or if you require additional assistance for set-up, contact your authorised Pride provider.

Using your Pride product safely depends upon your diligence in following the warnings, cautions, and instructions in this owner's manual. Using your Pride product safely also depends upon your own good judgement and/or common sense, as well as that of your provider, caregiver, and/or healthcare professional. Pride is not responsible for injuries and/or damage resulting from any person's failure to follow the warnings, cautions, and instructions in this owner's manual. Pride is not responsible for injuries and/or damage resulting from any person's failure to exercise good judgement and/or common sense.

The symbols below are used throughout this owner's manual to identify warnings and cautions. It is very important for you to read and understand them completely.



**WARNING!** Failure to heed the warnings in this owner's manual may result in personal injury.



**CAUTION!** Failure to heed the cautions in this owner's manual may result in damage to your Scooter.

# CONTENTS

<b>I. INTRODUCTION</b> .....	4
<b>II. SAFETY</b> .....	6
<b>III. SPECIFICATIONS</b> .....	9
<b>IV. DESCRIPTION</b> .....	11
<b>V. BATTERIES AND CHARGING</b> .....	16
<b>VI. OPERATION</b> .....	20
<b>VII. COMFORT ADJUSTMENTS</b> .....	22
<b>VIII. DISASSEMBLY AND ASSEMBLY</b> .....	25
<b>IX. TROUBLESHOOTING</b> .....	28
<b>X. CARE AND MAINTENANCE</b> .....	29
<b>XI. WARRANTY</b> .....	30

# I . I N T R O D U C T I O N

Welcome to Pride Mobility Products, Ltd. (Pride). Congratulations on the purchase of your new Pride Scooter. Your Scooter design combines the most advanced state-of-the-art components with modern, attractive styling. We are certain that the design features and trouble-free operation will add convenience to your daily living and ensure complete satisfaction.

At Pride, your safety is important to us. **Please read and follow all of the instructions in this manual before you attempt to operate your Scooter for the first time.** These instructions were produced for your benefit. Your understanding of these instructions is essential for the safe operation of your new Pride Scooter.

Pride is not liable for damage to property or personal injury arising out of the unsafe use of a Pride Scooter. Pride is also not liable for any property damage or personal injury arising out of the failure of any person and or/user to following the instructions and recommendations set forth in this manual or any other instructions or recommendations contained in other Scooter related literature issued by Pride or contained on the Pride Scooter itself.

This owner's manual is compiled from the latest specifications and product information available at the time of publication. We reserve the right to make changes as they become necessary. Any changes to our products may cause slight variations between the illustrations and explanations in this manual and the product you have purchased.

If you experience any problems with your Scooter that you are unable to solve, or if you do not feel capable of safely following any of the instructions and/or recommendations contained in this manual, please contact your authorised Pride provider for assistance.

Once you understand how to operate and take care of your Scooter, we are certain that it will give you years of trouble-free service and enjoyment.

## **Information Exchange**

We want to hear your questions, comments, and suggestions regarding this manual. We would also like to hear about the safety and reliability of your new Pride Scooter and the service you received from your authorised Pride provider.

Please notify us of any change of address so we can keep you apprised of important information regarding safety, new products, and new options that can increase your ability to use and enjoy your Pride Scooter. Please feel free to write us at the address below:

Pride Mobility Products, Ltd.  
Unit 106  
Heyford Park Camp Road  
Upper Heyford, Oxfordshire, OX25 5HA

# I. INTRODUCTION

## **Pride Owners Club**

As a Pride product owner, you are invited to register your product's warranty and enroll in the Pride Owners Club. You may do so by filling out and returning your enclosed registration card or by visiting Pride's web site at [www.pridemobility.com](http://www.pridemobility.com). As a registered member, each time you visit our site you will have access to the most interactive and honest educational venue available today for people with mobility needs, their families, and friends.

From our home page, click on the button that reads "Owners Club" to enter a page dedicated to current and potential Pride product owners. You will gain access to interviews, stories, recreation ideas, daily living tips, product and funding information, and interactive message boards. Message boards invite you to speak with other Pride customers as well as Pride representatives who are available to assist you with any questions or concerns you may have. You will receive a free gift simply for registering with the Pride Owners Club.

## **My Authorised Pride Provider Is:**

Name: \_\_\_\_\_

Address: \_\_\_\_\_

## **Quick Reference Information:**

Scooter Model: \_\_\_\_\_

Serial Number: \_\_\_\_\_

Purchase Date: \_\_\_\_\_

*NOTE: If you ever lose or misplace your warranty card or owner's manual, write to us and we will be glad to send you a new one immediately.*

# II. SAFETY

## SAFETY PRECAUTIONS

- Do not leave the key in the switch when your Celebrity XL is unattended.
- Make certain that the seat is locked into place and that the key is removed from the key switch before getting on or off of your Celebrity XL, and make certain that the seat is in a locked position when you are operating your Scooter.
- Reduce your Celebrity XL's speed when you are operating it on uneven terrain, soft surfaces, and around corners.
- Proceed with extreme caution as you approach the downgrade of a ramp or incline and when driving near a raised surface or unprotected ledges and drop offs (kerbs, porches, stairs, etc.).
- Use extreme caution when operating your Celebrity XL on busy streets and in parking lots or shopping malls.
- Keep your hands on the tiller and your feet on the floorboard when you are operating your Celebrity XL.
- Make certain that the tyres are properly inflated (30 psi).
- Make certain that your Celebrity XL's batteries are properly secured when you are transporting your Scooter in another vehicle.
- Disconnect your Celebrity XL's batteries if you will not be using your Scooter for more than 48 hours.
- Battery posts, terminals and related accessories contain lead and lead compounds. Wash hands after handling.

**WARNING! Do not expose the electronics to any type of moisture (rain, snow, mist, or wash) at any time. Such exposure can damage the electronics. Never attempt to ride a Scooter that has been exposed to moisture until it has dried thoroughly.**

**Do not operate or store your Scooter where it may be exposed to inclement weather conditions such as rain, snow, mist, and below-freezing temperatures (such as storage on an outside car/van lift). Attempting to operate your Scooter in such conditions can damage the electronics and potentially result in loss of control.**



**Do not operate your Scooter in icy or slippery conditions or on salted surfaces (i.e., walks or roads). Such use may result in an accident, personal injury, or adversely affect the performance and/or safety of your Scooter.**

**Always protect batteries from freezing temperatures and never charge a frozen battery. This will damage the battery and may cause personal injury. Charging a battery in freezing conditions does not prevent the battery from freezing.**

As you begin to use your Celebrity XL during your daily activities, you will encounter situations that may require some practice. Simply take your time as you operate your Scooter and you will soon be in full and confident control as you maneuver through doorways, on and off of elevators, up and down ramps, and over moderate terrain.

## DOORS

- Determine if the door opens toward or away from you.
- Use your hand to turn the knob or push the handle or push-bar.
- Drive your Celebrity XL slowly forward to push the door open; or drive your Scooter slowly backwards as you pull the door open.

## II. SAFETY

### ELEVATORS

Modern elevators have a door-edge safety mechanism that, when pushed, reopens the elevator door(s).

- If you are in the doorway of an elevator when the door(s) begin to close, push on the rubber door edge or allow the rubber door edge to contact the Scooter to reopen the door.
- Use care that pocketbooks, packages, or Celebrity XL accessories do not become caught in the elevator doors.

### RAMPS AND OTHER INCLINES

More and more buildings have ramps with specified degrees of inclination, designed for easy and safe scooter access. Some ramps may have turning switchbacks that require you to have good cornering skills on your Celebrity XL.

- Take wide swings with your Scooter's front wheel(s) around any tight corners. If you do that, the rear wheels will follow a wide arc and will not cut the corner short, bump into, or get hung up on any railing corners.
- When driving down a ramp, keep your Celebrity XL's speed adjustment dial (see IV. "Description") set to the tortoise (slowest speed setting) to ensure a safely controlled descent.
- Avoid sudden stops and starts.

Other inclines may be natural or, if man-made, not designed specifically for Scooters. Figure 1 illustrates your Celebrity XL's stability and its ability to climb grades under various weight loads and under controlled testing conditions.

Pride conducted controlled incline testing with the Celebrity XL's seat in the highest position, adjusted backward on the seat base to the farthest rearward position. These tests show that your Celebrity XL's ability to travel up inclines is affected by your weight, your Scooter's speed, your angle of approach to the incline, and your Scooter setup.

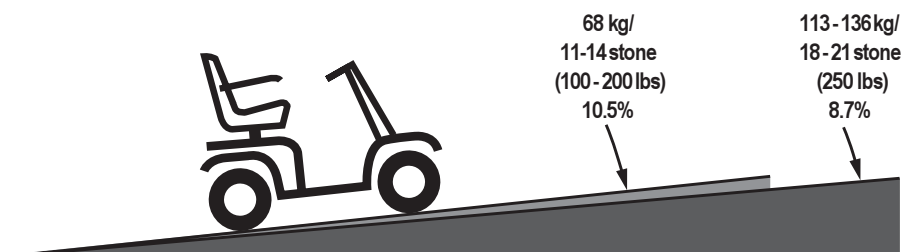


Figure 1. Maximum Recommended Incline Angle

## II. SAFETY

When you approach an incline, it is best to lean forward. See figures 2 and 3. This shifts the center of gravity of you and your Celebrity XL toward the front of the Scooter for improved stability.



**WARNING!** Do not exceed the incline guidelines or any other specifications presented in this manual.



Figure 2. Normal Driving Position

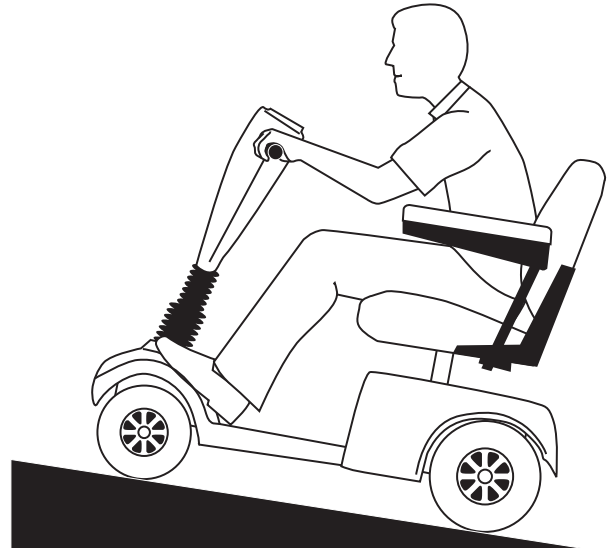


Figure 3. Increased Stability Driving Position

### DRIVING SURFACES

Your Celebrity XL was designed to provide optimum stability under normal driving conditions — dry, level surfaces composed of concrete or asphalt. However, Pride recognizes that there will be times when you will operate your Scooter on surfaces other than concrete or asphalt. For that reason, we also designed your Celebrity XL to perform admirably on packed soil, grass, and gravel.

- Feel free to use your Celebrity XL safely on lawns and in park areas.
- Avoid tall grass that can entangle the running gear.
- Packed soil, gravel, driveways, or roads will not present a problem for your Celebrity XL.
- Avoid loosely packed gravel and sand.
- If you feel unsure about a driving surface, avoid that surface.



# III. SPECIFICATIONS

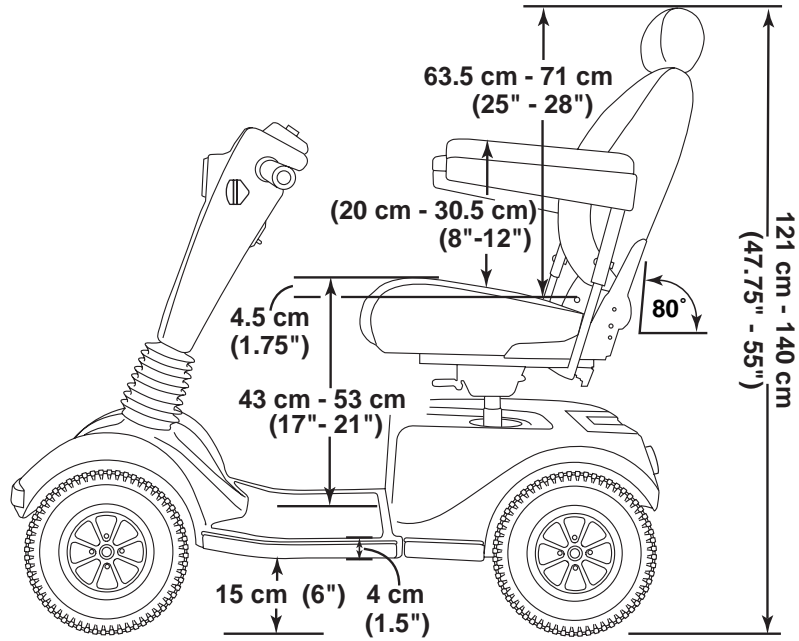
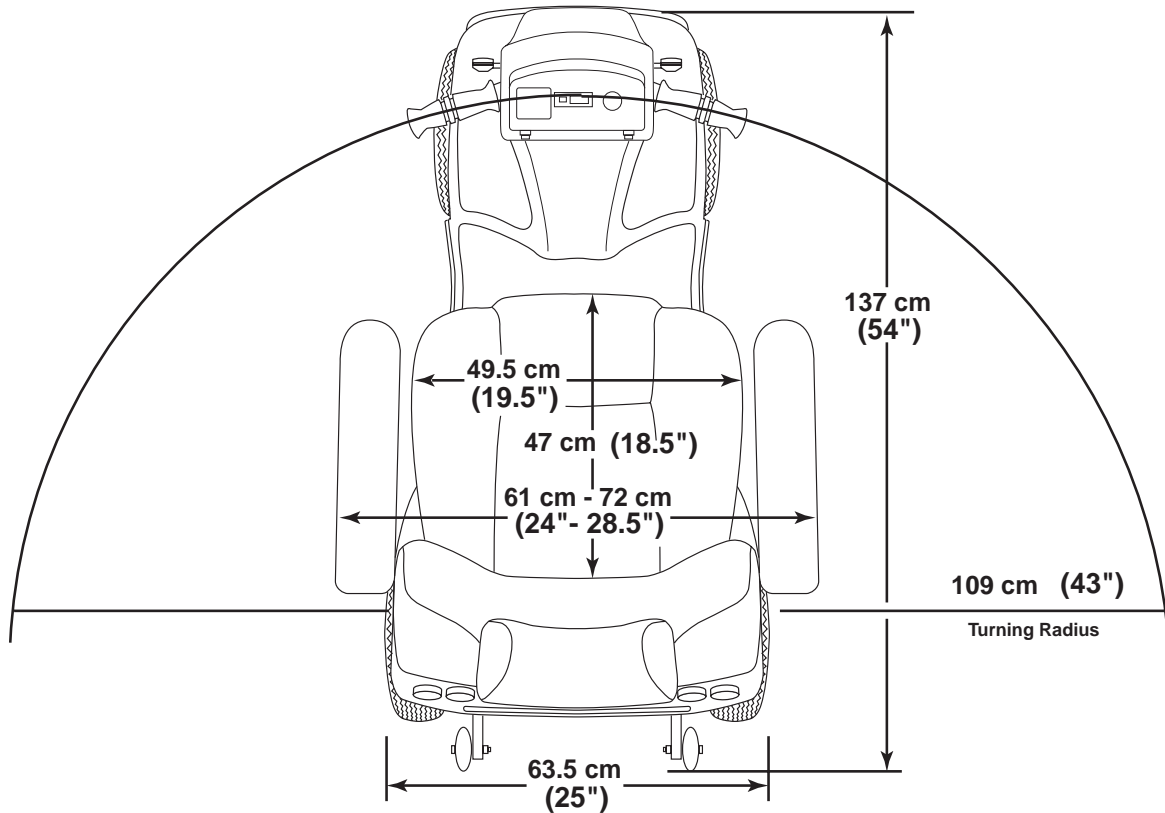


Figure 4. Celebrity XL Specifications



<b>Specifications</b>	
Length:	137 cm (54")
Width:	63.5 cm (25")
Tyres:	Type: Pneumatic Front: 10 cm x 29 cm (4" x 11.5") Rear: 10 cm x 30 cm (4" x 12")
Weight Capacity:	136 kg/21 stone (300 lbs.) maximum
Battery Type (not included):	Two 12V, 32 amp hours (AH), U-1 type sealed lead-acid (SLA) or two 12V, 40 AH, SLA
Horsepower:	1.4 HP (Peak)
Charger:	Onboard 5-amp charger
Speed (Max):	Variable up to 6.4 km/hr (4 mph) (60% reverse)
Maximum Grade:	Please refer to figure 1.
Range:	Up to 32 - 40 km (20 - 25 miles) per charge with 32 AH batteries Up to 40 - 48 km (25 - 30 miles) per charge with 40 AH batteries
Turning Radius:	109 cm (43")
Body Colours:	Candy Apple Red, Forest Green, or Viper Blue
Seating:	Style: High back with headrest and sliders Dimensions: 49.5 cm (19.5") width (usable) x 63.5 cm x 71 cm (25" - 28") height (usable) x 47 cm (18.5") depth (usable) Seat cover material: Gray or beige vinyl Armrests: Match seat cover material User adjustable seat height from ground: 62 cm - 72 cm (24.5" - 28.5") User adjustable seat height from scooter deck: 43 cm - 53 cm (17" - 21")
Included Features:	Sliding seat, energy-saving auto shutoff feature, height adjustable armrests, front and rear suspension, full light package
Brakes:	Electronic regenerative braking and electromechanical disc brake
Rear Wheel Drive:	Sealed transaxle, 24 VDC motor
Wheels:	Pride MicroMag aluminum alloy wheels in black, red, or gold
Tiller Type:	Infinitely adjustable
Freewheel Mechanism:	Freewheel release lever located on transaxle
Scooter Weight:	Total weight with batteries: w/two 12V, 32 AH batteries: 99 kg (219.5 lbs.) w/two 12V, 40 AH batteries: 106 kg (234.5 lbs.) Total weight without batteries: 76 kg (169.5 lbs.) <b>Component Breakdown:</b> Front Section: 25 kg (61.5 lbs.) Rear Section (w/out batteries or rear shroud): 31 kg (68.5 lbs.) Rear Plastic Shroud: 1.5 kg (3.5 lbs.) Seat: 16 kg (36 lbs.) Batteries (2 required): 11 kg (25 lbs.) each (12V, 32 AH); 15 kg (32.5 lbs.) each (12V, 40 AH)
Front-to-rear Lockup:	Lock pin and cam lever system
Ground Clearance:	15 cm (6")
Optional Accessories:	Cane/Crutch holder, walker holder, rearview mirror, cup holder, power seat, oxygen bottle holder, front and rear bumper, rear basket, power seat assembly, front basket

## IV. DESCRIPTION

Your Celebrity XL is an indoor/outdoor motorized electric scooter designed to enhance your personal mobility. It was designed to travel primarily on smooth surfaces such as sidewalks, roads, parking lots, floors, and driveways. For easy transportation or storage, you can disassemble your Celebrity XL into seven components. See figure 5. To decrease the rear section weight or to charge your batteries while your Scooter is disassembled, you can also remove the utility tray and its subcomponents from the rear section. For further information on disassembly, see VIII. “Disassembly and Assembly.” For further information on charging your batteries while your Scooter is disassembled, see V. “Batteries and Charging.”



Figure 5. Celebrity XL Components

### CONTROL CONSOLE ASSEMBLY

The control console assembly located on the front section houses all of the controls you need to operate your Celebrity XL. See figure 6.



**WARNING! Do not expose the control console assembly to moisture. In the event it does become exposed to moisture, do not attempt to operate your Celebrity XL until it has thoroughly dried.**

### Tiller Adjustment Lever

This lever allows you to adjust the tiller between the forward stop and the scooter deck. For tiller adjustment instructions, see VII. “Comfort Adjustments.”

### Power Seat Switch (Optional)

If your Celebrity XL is equipped with a power seat, this switch enables you to raise and lower the seat. For power seat adjustment directions, see VII. “Comfort Adjustments.”



**WARNING! Strict adherence to the following safety rules is vital: Do not attempt to raise or lower the seat while your Celebrity XL is in motion! Adjust the power seat only when your Celebrity XL is level and stationary! Drive your Scooter only with the seat in the lowest position! Do not operate your Scooter with the power seat elevated!**

## IV. DESCRIPTION

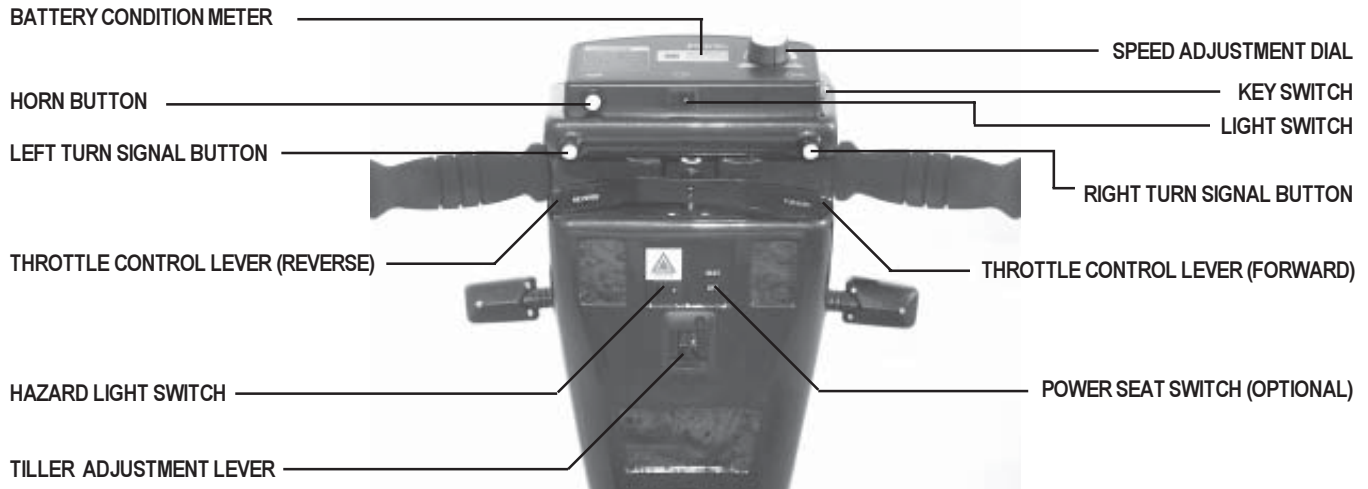


Figure 6. Control Console Assembly

### Speed Adjustment Dial

This dial allows you to preselect and limit your Celebrity XL's top speed.

- Set the speed between the slowest (image of the tortoise) and the fastest (image of the hare) speed settings.

### Key Switch

This switch enables you to power up and power down your Celebrity XL Scooter.

- Fully insert the key into the key switch to power up your Celebrity XL.
- Pull the key out to power down your Celebrity XL.



**WARNING! If you remove the key from the key switch while your Celebrity XL is in motion, the electronic brakes engage and your Celebrity XL comes to an abrupt stop!**

### Left and Right Turn Signal Buttons

Use these buttons to turn on the left and right turn signal (amber) lights.

- Push the appropriate turn signal button once to turn on the signal light before turning your Celebrity XL. Your Celebrity XL's turn signals are timed to shut off automatically.

### Throttle Control Levers

These levers allow you to control your Celebrity XL's forward and reverse speed up to the maximum speed you preset on the speed adjustment dial. For instructions on how to operate your Celebrity XL's throttle control, see VI. "Operation."

### Horn Button

This button activates a warning horn.

- Ensure the key is fully inserted into the key switch and push the horn button to sound the horn.

## IV. DESCRIPTION

### Hazard Light Switch

This switch enables you to control your Celebrity XL's front and rear (amber) hazard lights.

- Toggle this switch to turn the hazard lights on and off.

### Light Switch

This switch enables you to control your Celebrity XL's headlight and running (rear red) lights.

- Toggle this switch to turn your headlight and running lights on and off.

### Battery Condition Meter

When your Celebrity XL's key is fully inserted, this meter indicates the approximate battery voltage strength. For further information on battery charging, see V. "Batteries and Charging."

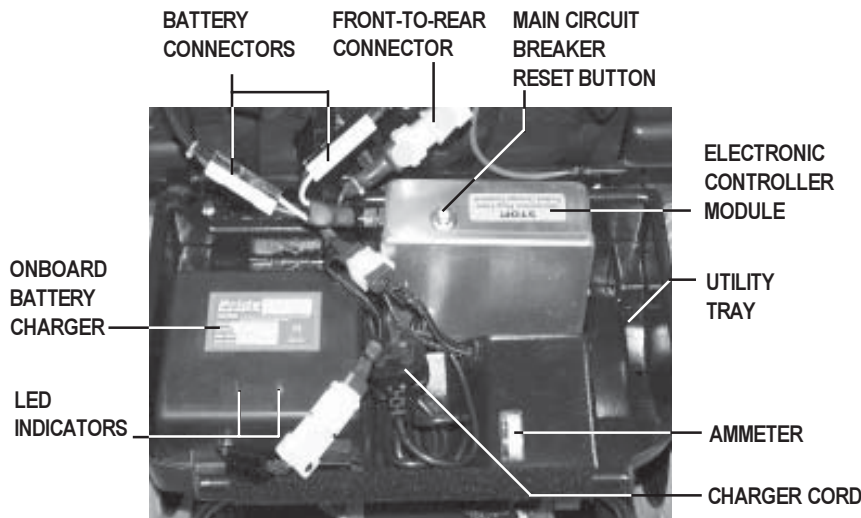


Figure 7. Utility Tray Components

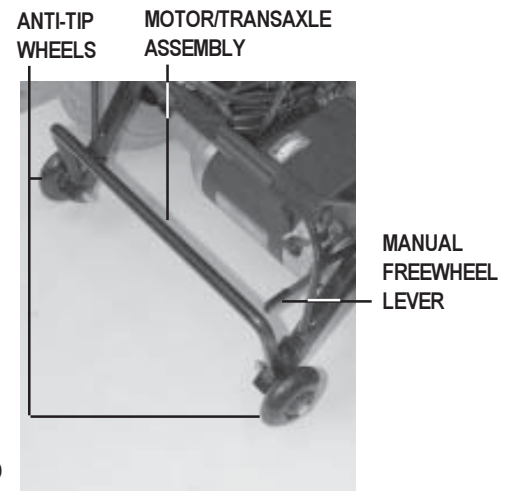


Figure 8. Rear Section

## REAR SECTION

The onboard battery charger, charger cord, electronic controller module, manual freewheel lever, and the motor/transaxle assembly are located on the rear section of your Celebrity XL. See figures 7 and 8. Refer to VIII. "Disassembly and Assembly" for instructions on removing the rear shroud.

### Motor/Transaxle Assembly

The motor/transaxle assembly is the geared transmission and differential. It is a one piece, direct drive, fully sealed assembly which provides quiet operation with maximum power.

### Electronic Controller Module

This module is located behind the batteries and at the forward right corner of your Celebrity XL's rear section. The controller module receives electrical signals from the console controls and sends power to the motor, the brakes, and the lighting system.



**WARNING! Do not expose the electronic controller module to moisture. If it does become exposed to moisture, do not attempt to operate your Celebrity XL until it has thoroughly dried.**

## IV. DESCRIPTION

### Batteries

The batteries store the electrical energy that powers your Celebrity XL. For directions on charging your batteries, see V. “Batteries and Charging.”

*NOTE: For your convenience, you may remove the utility tray and its components and charge the batteries independently from the Scooter. See VIII. “Disassembly and Assembly” for instructions on removing the utility tray.*

### Onboard Battery Charger

The onboard battery charger converts household current (AC) to direct current (DC) and charges your Celebrity XL’s batteries. See V. “Batteries and Charging.”

- The charger is located on the utility tray.
- The charger is a black-colored box with a green and a red LED indicator on the exterior of the case.

*NOTE: For your safety, use only the supplied onboard battery charger.*

### Main Circuit Breaker

When the voltage in your Celebrity XL’s batteries becomes low or your Scooter is heavily strained because of excessive loads, the main circuit breaker may trip to protect your Celebrity XL’s motor and electronics from damage.

- The main circuit breaker reset button is mounted on the electronic controller module cover.
- The main circuit breaker reset button pops out when the breaker trips.
- When the breaker trips, the entire electrical system of your Celebrity XL is shut down.
- Allow a minute or so for your Celebrity XL’s electronics to “rest.”
- Push in the reset button to reset the breaker.
- If the breaker trips frequently, you may need to charge your batteries more often or have your Pride provider perform a 50-amp load test on your Celebrity XL’s batteries.
- If the main circuit breaker trips repeatedly, see your authorized Pride provider for service.

### Manual Freewheel Lever

Whenever you want to push your Celebrity XL for short distances, you can put it in manual freewheel mode.

**WARNING! It is important to remember that when your Celebrity XL is in freewheel mode, the braking system is disengaged.**



**Follow these safety rules when using the freewheel mode:**

- **Do not disengage the drive motors when your Celebrity XL is on an incline; your Scooter could roll down on its own and cause injury!**
- **Before placing your Celebrity XL in or taking it out of freewheel mode, ensure the key is removed from the key switch.**
- **Never sit on your Scooter when it is in freewheel mode.**
- **When you have finished pushing your Scooter, always return it to the drive mode to lock the brakes.**

## IV. DESCRIPTION

- The manual freewheel lever is located on the end of the motor/transaxle assembly at the right rear of the Celebrity XL.
- Pull up on the manual freewheel lever to disable the drive system and the brake system; you will then be able to push your Celebrity XL.
- Push down on the manual freewheel lever to reengage the drive system and the brake system and take your Celebrity XL out of freewheel mode.

### ANTI-TIP WHEELS

The anti-tip wheels are an integral and important safety feature of your Celebrity XL.



**WARNING! Do not remove your Scooter's anti-tip wheels or modify your Scooter in any way that is not authorized by Pride.**

### OPTIONAL ACCESSORIES

For information concerning these optional accessories, see your authorized Pride provider.



Single Crutch Holder



Oxygen Bottle Holder



Rear Basket



Arm Mount Cane/Crutch Holder



Walker Holder

# V. BATTERIES AND CHARGING

Your Celebrity XL requires two long-lasting, 12-volt, deep-cycle batteries that are sealed and maintenance free. Recharge the batteries with the convenient onboard 5-amp charging system.

Two important points to remember are:

- Charge your Celebrity XL's batteries with the supplied onboard battery charger prior to using it for the first time.
- Keep your batteries fully charged to keep your Celebrity XL running smoothly.

*NOTE: Use only the onboard battery charger supplied with your Celebrity.*

## READING YOUR BATTERY VOLTAGE

The battery condition meter on the control console indicates the approximate strength of your batteries. (The meter reads 24 volts when your batteries are fully charged.) To check the charge, you must first unplug the battery charger and insert the key into the key switch.

You can also use the ammeter to check your batteries' charge. The ammeter is located on the utility tray under the rear shroud. See figure 8. (The amperage reading should be at or near zero (0) when the batteries are fully charged.) The battery charger must be plugged into a wall outlet to obtain an ammeter reading.

## CHARGING YOUR BATTERIES

You can charge your Celebrity XL's batteries with your Scooter completely assembled or with your Scooter disassembled, as described in VIII. "Disassembly and Assembly." We strongly recommend you charge your batteries while your Scooter is fully assembled. However, if you are traveling and you disassemble your Scooter to transport it, you may find it necessary to charge your batteries. In such instances, it is easier to take out the utility tray and batteries to perform the charging. See figure 9.

Follow these steps to safely charge your batteries while your Scooter is fully assembled.

1. Position your Scooter close to a standard wall outlet.
2. Remove the key from the control console.
3. Ensure the freewheel lever is in the drive (down) position.
4. Extend the charger power cord and plug it into the wall outlet. We recommend you charge your Celebrity XL's batteries for 8 to 14 hours.
5. When the batteries are fully charged, unplug the charger power cord from the wall outlet, recoil the cord, and place it neatly inside the utility tray.

*NOTE: There is a charger inhibit on your Celebrity XL. Your Scooter will not run and the battery condition meter will not operate while the batteries are charging.*

Follow these steps to safely charge your batteries with the utility tray and batteries removed.

1. Disassemble your Scooter as described in VIII. "Disassembly and Assembly."
2. Place your utility tray and batteries close to a standard wall outlet.
3. Plug both two-pin battery harnesses into the adjoining harnesses extending from the electronic controller module on the utility tray.
4. Extend the charger power cord and plug it into the wall outlet. We recommend you charge the batteries for 8 to 14 hours.



# V. BATTERIES AND CHARGING

5. When the batteries are fully charged, unplug the charger power cord from the wall outlet, recoil the cord, and place it neatly inside the utility tray.
6. Unplug both battery harnesses.
7. Reassemble your Scooter as described in VIII. “Disassembly and Assembly.”

## FREQUENTLY ASKED QUESTIONS (FAQs)

### How does the charger work?

When battery voltage is low, the charger works harder and sends more electrical current to the batteries to bring up their charge. As the voltage of the batteries approaches a full charge, the charger sends less electrical current to the batteries. When the batteries are fully charged, the current sent to them from the charger is at nearly zero amperage. Therefore, when the charger is plugged in, it maintains the charge on the batteries but does not overcharge them. We do not recommend that you charge your Celebrity XL’s batteries for more than 24 consecutive hours.

### What does the LED on the charger indicate?

The red LED indicates that the batteries are being charged. The green LED turns on after the batteries have been fully charged. In some instances, the green LED may stay on after the charger has been unplugged from the wall outlet. Although users may perceive this as a charger malfunction, it is normal. The green LED goes off after a few minutes, when the batteries reach 24 VDC.

### Can I use a different charger?

For the safest, most efficient, and balanced charging of your Celebrity XL’s batteries, you should simultaneously charge both batteries using only the manufacturer supplied onboard battery charger.

### How often must I charge the batteries?

Two major factors must be considered when deciding how often to charge your Celebrity XL’s batteries: all day Scooter use on a daily basis and infrequent Scooter use.

With these considerations in mind, you can determine just how often and for how long you should charge your Celebrity XL’s batteries. We designed the onboard charger so that it does not overcharge your Scooter’s batteries; however, you may encounter some problems if you do not charge your batteries often enough and if you do not charge them on a regular basis. Following the five guidelines below provides safe and reliable battery operation and charging.

1. If you use your Celebrity XL daily, charge its batteries as soon as you finish using it for the day. Your Scooter will be ready each morning to give you a “full day” of service. We recommend you charge your Celebrity XL’s batteries for 8 to 14 hours after daily use.
2. If you use your Celebrity XL once a week or less, charge its batteries at least once a week for 12 to 14 hours at a time.
3. Keep your Celebrity XL’s batteries fully charged.
4. Avoid deeply discharging your Celebrity XL’s batteries.
5. Do not charge your Celebrity XL’s batteries for more than 24 consecutive hours.

ELECTRONIC CONTROLLER MODULE

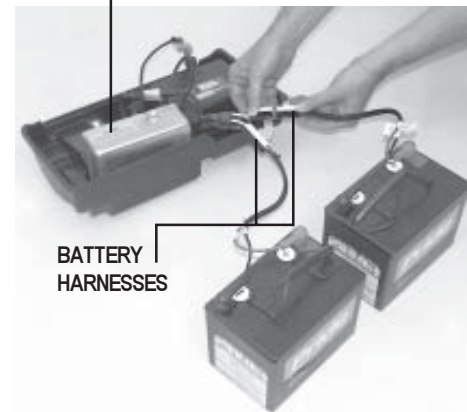


Figure 9. Utility Tray and Batteries

# V. BATTERIES AND CHARGING

## How can I get maximum range or distance per charge?

Rarely will you have ideal driving conditions—smooth, flat, hard driving surfaces with no wind or curves. You will often face hills, sidewalk cracks, uneven and loosely packed surfaces, curves, and wind. All of these driving conditions affect the distance or running time per battery charge. The following are a few suggestions for obtaining the maximum range per battery charge.

- Always fully charge your Celebrity XL's batteries prior to your daily use.
- Maintain 30 psi (pounds per square inch) in all of your Celebrity XL's tyres.
- Plan your route ahead to avoid as many hills, cracked, broken, or soft surfaces as possible.
- Limit your baggage weight to essential items.
- Try to maintain an even speed while your Celebrity XL is in motion.
- Avoid stop-and-go driving.

## What type and size of battery should I use?

We recommend deep-cycle batteries that are sealed and maintenance free. Both sealed lead-acid (SLA) and gel cell are deep-cycle batteries that are similar in performance in your Celebrity XL. Do not use wet-cell batteries, which have removable caps.



**CAUTION! Do not remove the caps from sealed batteries. Water cannot be added to sealed batteries. Cap removal voids the battery warranty and may cause damage to the batteries and to your Celebrity XL.**

Use these specifications to reorder deep-cycle batteries.

Type: Deep-cycle (SLA or gel cell)  
Size: U-1 (32 AH only)  
Voltage: 12V each  
Amperage: 32 AH or 40 AH

To change a battery in your Celebrity XL:

1. Remove the seat and the rear shroud. See VIII. "Disassembly and Assembly."
2. Disconnect the battery cables from the electronic controller module.
3. Disconnect the battery cables from the battery terminals.
4. Remove the old battery.
5. Place a new battery in the battery well.
6. Connect the red battery cable to the positive (+) battery terminal.
7. Connect the black battery cable to the negative (-) battery terminal.
8. Reconnect the battery cables to the electronic controller module.
9. Reinstall the rear shroud and the seat.



**WARNING! Battery posts, terminals and related accessories contain lead and lead compounds. Wash hands after handling.**

## Why do my new batteries seem weak?

Deep-cycle batteries employ a different chemical technology than that used in car batteries, nickel-cadmium batteries (nicads), or in other common battery types. Deep-cycle batteries are specifically designed to provide power, drain down their charge, and then accept a relatively quick recharge.

# V. BATTERIES AND CHARGING

We work closely with our battery manufacturer to provide batteries that best suit your Celebrity XL's specific electrical demands. Fresh batteries arrive daily at Pride and are shipped fully charged to our customers. During shipping, the batteries may encounter temperature extremes that may influence their initial performance. Heat diminishes the charge on the battery; cold slows the available power and extends the time needed to recharge the battery.

It may take a few days for the temperature of your Celebrity XL's batteries to stabilize and adjust to their new room or ambient temperature. More importantly, it takes a few charging cycles (a partial drain followed by a full recharge) to establish the critical chemical balance that is essential to a deep-cycle battery's peak performance and long life.

Please follow these steps to properly break in your Celebrity XL's new batteries for maximum efficiency and service life.

1. Fully recharge any new battery prior to its initial use. This initial charging cycle brings the batteries up to about 88% of their peak performance level.
2. Operate your new Celebrity XL in familiar and safe areas. Drive slowly at first, and do not travel too far from your home or familiar surroundings until you have become accustomed to your Celebrity XL's controls and have properly broken in your Scooter's batteries.
3. Fully recharge the batteries. This recharge should bring the batteries up to about 90% of their peak performance level.
4. Operate your Celebrity XL again.
5. Fully recharge the batteries again.
6. After four or five charging cycles, the batteries are able to receive a charge of 100% of their peak performance level and are able to last for an extended period of time.

## How can I ensure maximum battery life?

Fully charged deep-cycle batteries provide reliable performance and extended battery service life. Keep your Celebrity XL's batteries fully charged whenever possible. Batteries that are deeply discharged, infrequently charged, or stored without a full charge may be permanently damaged and cause unreliable performance and limited service life.

## How should I store my Celebrity and its batteries?

If you plan on not using your Celebrity XL for an extended period of time, it is best to:

- Fully charge its batteries prior to storage.
- Disconnect the battery harnesses from the electronic controller module.
- Store your Celebrity XL in a warm, dry environment.
- Avoid storing your Celebrity XL where it will be exposed to temperature extremes.



**WARNING! If your Celebrity's batteries do become frozen, do not attempt to charge them. Cold or frozen batteries should be allowed to warm up for several days prior to recharging.**

For prolonged storage, you may wish to place several boards under the frame of your Celebrity XL to raise the Scooter off the ground and take the weight off the tyres. This reduces the possibility of flat spots developing on the areas of the tyres contacting the ground.

# VI. OPERATION

Familiarize yourself with the following checklist before you get on your Celebrity XL. Some of the checks must be performed prior to getting on your Scooter.

## PRE-RIDE ADJUSTMENTS AND CHECKS

- Have you fully charged the batteries? See V. “Batteries and Charging.”
- Is the manual freewheel lever in the drive (down) position? See IV. “Description.” Never leave the manual freewheel lever pulled up unless you are manually pushing your Celebrity XL.
- Is your proposed path clear of people, pets, and obstacles?
- Have you planned your route to avoid adverse terrain and as many inclines as possible?
- Are you positioned comfortably in the seat? See “Getting On Your Scooter,” below.
- Is the seat at the proper height? See VII. “Comfort Adjustments.”
- Is the seat locked securely in place? See VII. “Comfort Adjustments.”
- Is the tiller handle at a comfortable setting and locked securely in place? See VII. “Comfort Adjustments.”
- Is the key fully inserted into the key switch? See IV. “Description.”
- Is the speed adjustment dial set to a slow setting? See IV. “Description.”
- Are you grasping the handgrips with a thumb resting on each side of the throttle lever? See IV. “Description.”
- Does your Celebrity XL’s horn work properly?

## GETTING ON YOUR SCOOTER

1. Make certain that the key is removed from the key switch.
2. Stand at the side of your Scooter.
3. Push down on the seat lock lever and rotate the seat until it faces you.
4. Make certain that the seat is locked securely in position.
5. Position yourself comfortably and securely in the seat.
6. Push down on the seat lock lever and rotate the seat until you face forward.
7. Make certain that the seat is locked securely in position.
8. Make certain that your feet are safely on the floorboard.

## OPERATING YOUR SCOOTER

After planning your route:

1. Set the speed adjustment dial to your desired speed.
2. Insert the key into the key switch.
3. With your hands on the handgrips, use your thumb to push the right throttle lever to disengage the brakes and move forward; the electric brake automatically disengages and your Scooter accelerates smoothly to the speed you set with the speed adjustment dial.
4. Pull on the left handgrip to steer your Scooter to the left.
5. Pull on the right handgrip to steer your Scooter to the right.
6. Move the tiller to the center position to drive straight ahead.
7. Release the throttle lever to decelerate and come to a complete stop. The electric brake automatically engages when your Scooter comes to a stop.
8. To move in reverse, use your thumb to push the left throttle lever to disengage the brakes and move rearward.

# VI. OPERATION

## **GETTING OFF OF YOUR SCOOTER**

1. Bring your Scooter to a complete stop.
2. Make certain that the key is removed from the key switch.
3. Push down on the seat lock lever and rotate the seat until you are facing toward the side of your Scooter.
4. Make certain that the seat is locked securely in position.
5. Carefully get out of the seat and stand to the side of your Scooter.
6. You may, if you wish, leave the seat facing to the side to facilitate boarding your Scooter the next time you are going to operate it.

# VII. COMFORT ADJUSTMENTS

## TILLER ANGLE ADJUSTMENT

You can adjust the tiller infinitely between the forward stop and the scooter deck.



**WARNING!** Remove the key before adjusting the tiller. Never attempt to adjust the tiller while your Scooter is in motion.

1. Pull up on the tiller adjustment lever. See figure 10.
2. Move the tiller to a comfortable position.
3. Release the tiller adjustment lever. The tiller will remain in that position.

*NOTE:* In order to lower the tiller to the scooter deck, you must first remove the seat and both batteries. See VIII. “Disassembly and Assembly.”

## SEAT HEIGHT ADJUSTMENT

The seat can be repositioned to one of five different heights. See figure 11.

1. Remove the seat from your Celebrity XL. See VIII. “Disassembly and Assembly.”
2. Use the attached ring to pull and remove the ball detent pin from the seat post tower.
3. Raise or lower the seat post to the desired seat height.
4. Hold the seat post at that height and match up the holes in the seat post with the seat post tower.
5. Fully insert the ball detent pin.
6. Replace the seat.

TILLER ADJUSTMENT LEVER



Figure 10. Tiller Angle Adjustment

SEAT POST TOWER SEAT POST BALL DETENT PIN

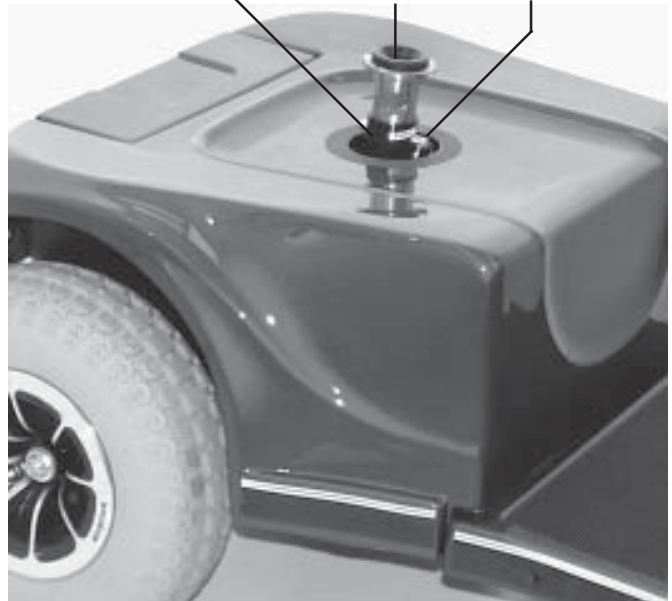


Figure 11. Seat Height Adjustment

# VII. COMFORT ADJUSTMENTS

## POWER SEAT ACTUATOR (OPTIONAL)

Your Celebrity XL may be equipped with a power seat actuator. The actuator raises and lowers the seat automatically. See figure 12.



**WARNING! The power seat actuator is intended for operation only while your Scooter is stationary and on a level surface. Its purpose is to aid you in reaching objects. Strict adherence to the following safety rules is vital to your safety:**

- Do not attempt to raise or lower the seat while in motion!
- Do not operate your Scooter with the power seat elevated!

**We recommend you drive your Scooter only with the seat in the lowest position.**

## OPERATING YOUR POWER SEAT

1. Ensure your Celebrity XL is level and stationary.
2. Toggle on the power seat switch.
3. To raise the power seat, place your hands on the handgrips and use your thumb to push the right side of the lever.
4. Release the lever when you have attained your desired height.
5. To lower the power seat, place your hands on the handgrips and use your thumb to push the left side of the lever.
6. Release the lever when you have attained your desired height.
7. Ensure your seat is in the lowest position and toggle off the power seat switch before you attempt to drive your Celebrity XL again.

## SLIDING SEAT ADJUSTMENT

You can move the sliding seat forward or rearward to suit your needs.

1. Reach under the seat with your left hand and pull the front-to-back seat release lever outward. See figure 13.
2. Slide the seat into a comfortable position.
3. Release the front-to-back seat release lever to lock the seat securely in place.

## SEAT ROTATION

The seat lock lever locks the seat in one of four positions.

1. Push down on the seat lock lever to unlock the seat. See figure 13.
2. Rotate the seat to the desired position.
3. Release the seat lock lever to lock the seat securely in place.

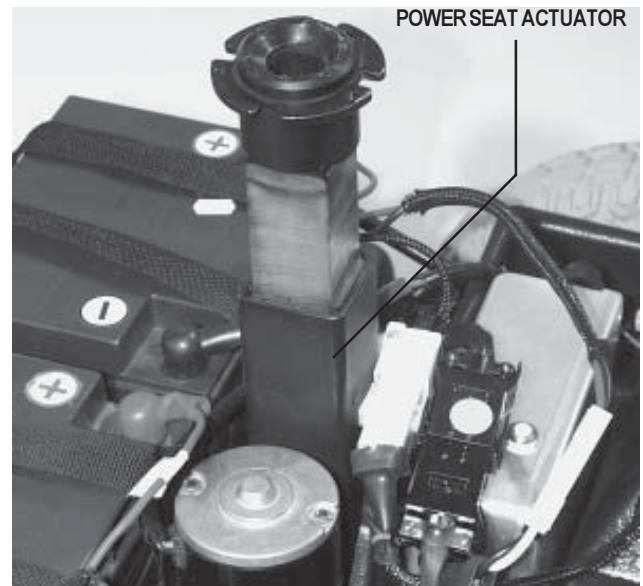


Figure 12. Power Seat Actuator (Optional)

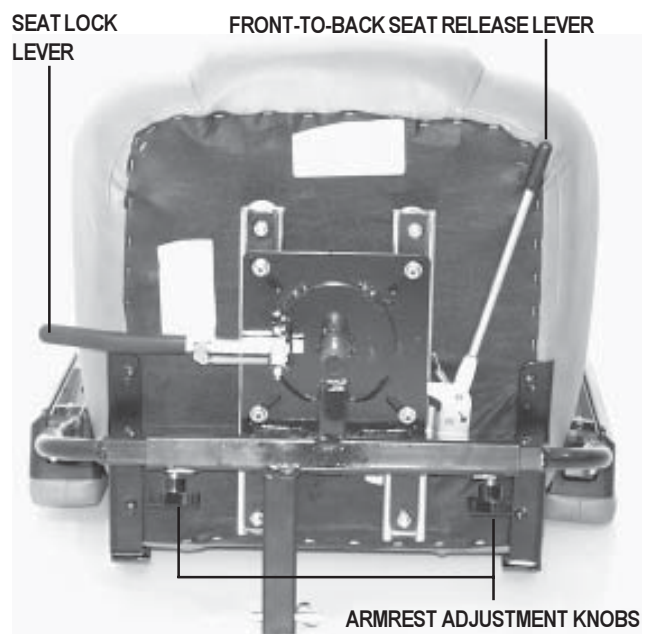


Figure 13. Seat Adjustments

# VII. COMFORT ADJUSTMENTS

## ARMREST WIDTH ADJUSTMENT

The armrest width of your Celebrity XL can be adjusted inward or outward.

1. Turn the armrest adjustment knobs at the back of the seat frame counterclockwise to loosen. See figure 13.
2. Slide the armrests in or out to the desired width.
3. Turn the armrest adjustment knobs clockwise to tighten.

*NOTE: You can also lift up the armrests to allow getting on and off of your Scooter easier.*

## ARMREST HEIGHT ADJUSTMENT

You will need the following tools to adjust the height of the armrests:

- 5/32" hex key
- 1/8" hex key
- 7/16" wrench

1. Loosen the setscrew on the side of the height adjustment tube with the 1/8" hex key. See figure 14.
2. Loosen and remove the acorn nut and screw holding the height adjustment tube in place.
3. Raise or lower the height adjustment tube to the desired height.
4. Align the holes in the adjustment tube with the holes in the armrest upright.
5. Insert the screw through the holes in both the height adjustment tube and the armrest upright.
6. Install and tighten the acorn nut.
7. Tighten the setscrew on the side of the height adjustment tube.
8. Repeat for the other armrest.

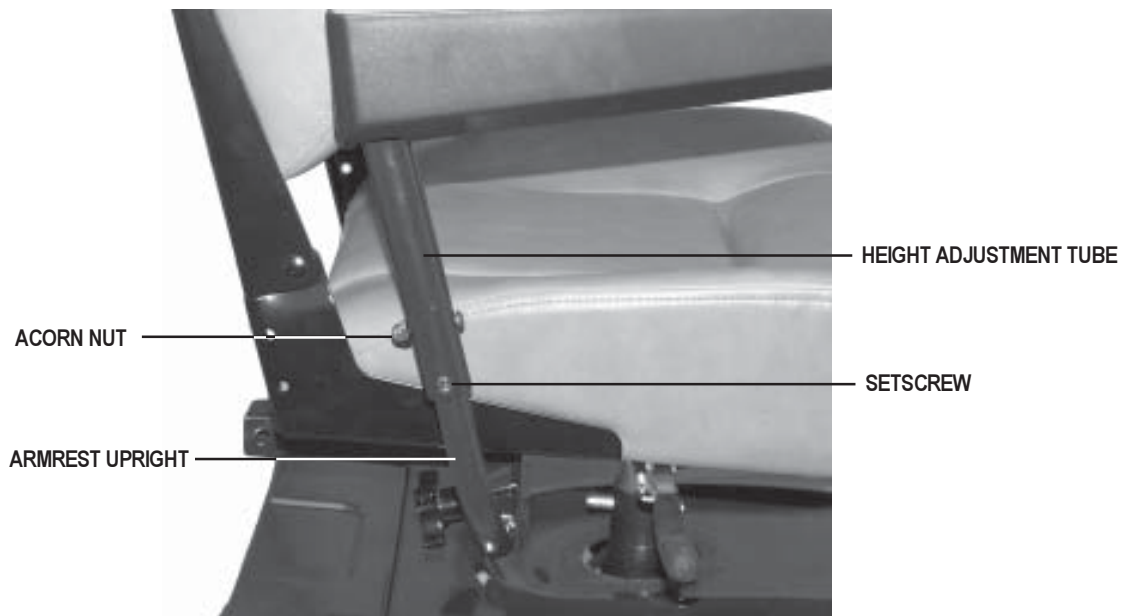


Figure 14. Armrest Height Adjustment



## VIII. DISASSEMBLY AND ASSEMBLY

No tools are required to disassemble or assemble your Celebrity XL. Always disassemble or assemble your Celebrity XL on a level, dry surface with sufficient room for you to work and move around your Scooter. Keep in mind that the disassembled sections of the Celebrity XL take up more floor space than the assembled Scooter.

### DISASSEMBLY

You can disassemble the Celebrity into seven or eight pieces: the seat, the front frame, the front basket, the rear frame, the rear shroud, and the two batteries; you can also remove the utility tray from the rear frame, if necessary. Place the Scooter in an area where you have sufficient clearance to move the parts around. You need approximately 1.5 meters in all directions. You may need assistance to lift some of the Scooter components. See III. “Specifications” for individual component weights.

1. Place the freewheel lever in the drive (down) position.
2. Push and hold down the seat lock handle to unlock it; then rotate the seat a quarter turn and lift the seat up and off of the Celebrity XL. See figure 15.
3. Gently lift the rear shroud off of the Celebrity XL. See figure 16. If your Scooter is equipped with the full lighting package, you will not be able to fully remove the rear shroud until you perform step 4.
4. Unplug the rear light harness, if so equipped. See figure 17.
5. Unplug the large, white front-to-rear connector that attaches the front control console harness to the utility tray. See figure 18.



Figure 17. Disconnecting the Lighting Harness



Figure 15. Seat Removal



Figure 16. Shroud Removal

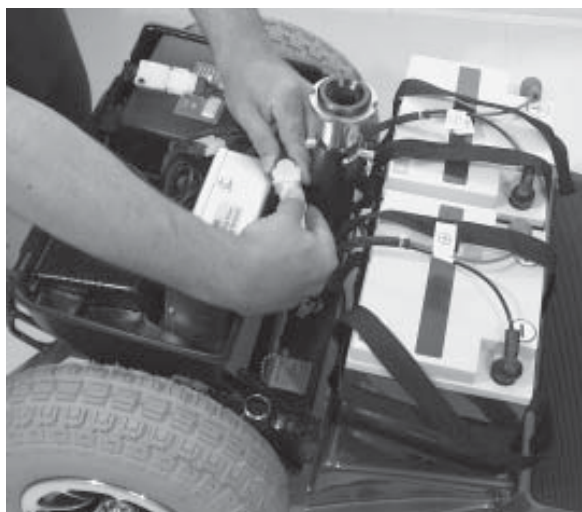


Figure 18. Unplugging the Front-to-Rear Connector

## VIII. DISASSEMBLY AND ASSEMBLY

- Unplug both battery harnesses and lift both batteries off of the Celebrity XL. See figures 19 and 20.



**CAUTION! Failing to unplug both battery harnesses and the front-to-rear connector prior to further disassembly could result in permanent damage to your Celebrity XL.**

- If you plan to remove the utility tray, disconnect the 6-pin motor harness plug. See figure 21. If you do not plan to remove the utility tray, go to step 9.

*NOTE: You can decrease the weight of the rear component by removing the utility tray.*

- Lift up and remove the utility tray (optional) if you want to decrease the weight of the rear component. See figure 22.
- Pull up on and remove the front basket.
- Grab the handle grip on the tiller, pull upward on the release lever, and gently lower the tiller down to the center of the Celebrity XL chassis until it is fully lowered.
- Remove the ball detent pins and lift the locking cam levers. See figures 23 and 24.
- Separate the front section from the rear section. See figure 25.

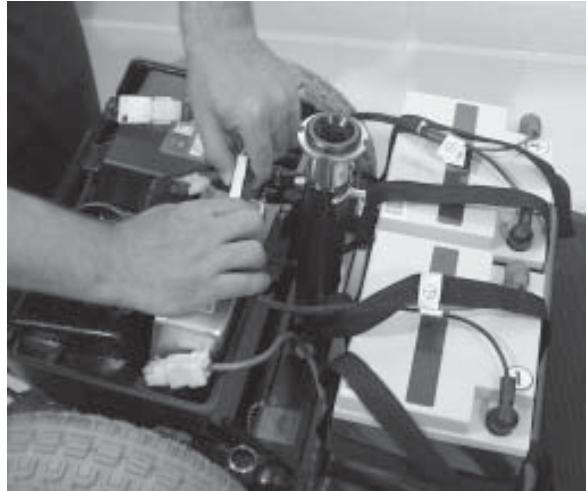


Figure 19. Unplugging the Battery Harnesses



Figure 20. Lifting the Batteries



Figure 21. Disconnecting the Motor Harness



Figure 22. Lifting the Utility Tray

# VIII. DISASSEMBLY AND ASSEMBLY

## ASSEMBLY

1. Place the freewheel lever in drive (down) position.
2. Position the front and rear sections next to each other.
3. Tilt the rear end to a horizontal position and insert the longer tube of the front end into the rear section first; make sure that the locking cam levers are vertically positioned and the locking pins are removed.
4. Slide the two sections of the unit together until the front half reaches its insertion limit.
5. Secure the front and rear sections with ball detent pins.
6. Ensure the tiller is in an upright position.
7. Push the locking cam levers back to their locked (down) position.
8. Clip the front basket onto the front of the tiller.
9. If you removed the utility tray from the rear component, replace the tray by aligning the reusable fasteners on the utility tray with those on the Celebrity XL's rear component; gently press down on the utility tray to ensure it is secure.
10. Plug the large, white front-to-rear connector from the front section of the Celebrity XL into the mating plug found on the control module cover on the utility tray at the rear of the Celebrity XL. The two orange dots present on both plugs should be adjacent to each other and enable quick plug mating.
11. Put the batteries in place and plug the two-pin battery harnesses into the adjoining harnesses that are also located on the control module.
12. If you removed the utility tray from the rear component, connect the 6-pin motor harness plug.
13. Gently place the rear shroud over the seat pedestal.
14. Connect the rear light harness, if so equipped. Make sure that the rear plastic shroud does not make any contact with the rear wheels.
15. Slide the shroud down in place.
16. Carefully lift the seat and slide the small seat post (on the seat bottom) into the seat post tower.
17. Rotate the seat until it locks into place.



Figure 23. Removing Ball Detent Pins with Rings



Figure 24. Lifting Up Locking Cam Levers

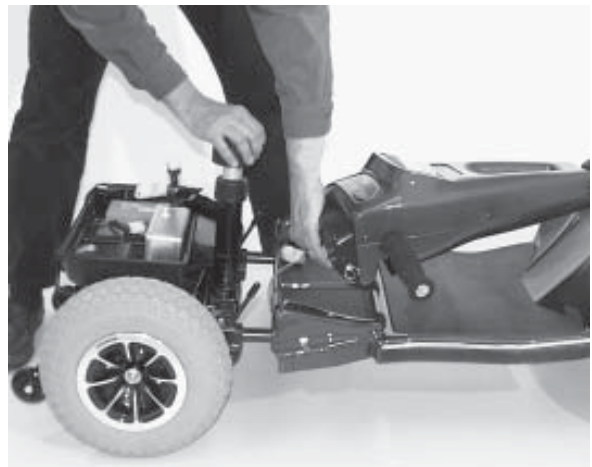


Figure 25. Separating the Frame Sections

# IX. TROUBLESHOOTING

Any electromechanical device occasionally requires some troubleshooting. However, most of the problems that may arise can usually be solved with a bit of thought and common sense. Many of these problems occur because the batteries are not fully charged or because the batteries are worn down and can no longer hold a charge.

Problem	Possible Solution
All of my Scooter systems appear to be “dead.”	<p>One of the following actions may eliminate the problem.</p> <ul style="list-style-type: none"> <li>■ Ensure the key is fully inserted in the key switch.</li> <li>■ Ensure the batteries are fully charged.</li> <li>■ Push in the main circuit breaker reset button.</li> <li>■ Ensure both battery harnesses are firmly connected to the electronic controller module and to the battery terminals.</li> <li>■ Ensure the front-to-rear cable is firmly connected.</li> </ul>
My Scooter’s battery condition meter shows a full charge, but my Scooter does not move when I push the throttle.	<p>Ensure your Celebrity XL was not left in freewheel mode. (Push down on the freewheel lever to restore normal operation.)</p> <p><i>NOTE: When the freewheel lever is pulled up, your Scooter’s brakes are disengaged and all power to the transaxle is cut.</i></p>
My Scooter’s main circuit breaker repeatedly trips.	<p>One of the following actions may eliminate the problem.</p> <ul style="list-style-type: none"> <li>■ Charge your Scooter's batteries more frequently.</li> <li>■ Have both of your Scooter’s batteries load tested by your authorized Pride provider.</li> <li>■ Obtain a battery load tester at most any automotive parts store; follow the directions supplied with the load tester.</li> </ul>
My Scooter's battery condition meter dips way down and the motor surges or hesitates when I press the throttle control lever.	<p>One of the following actions may eliminate the problem.</p> <ul style="list-style-type: none"> <li>■ Fully charge your Scooter's batteries.</li> <li>■ Have your authorized Pride provider load test each battery.</li> <li>■ Obtain a battery load tester at most any automotive parts store; follow the directions supplied with the load tester.</li> </ul>

If you experience any problems with your Celebrity XL that you are not able to solve, immediately contact your authorized Pride provider for information, maintenance, and service.

# X. CARE AND MAINTENANCE

Your Celebrity XL requires a minimal amount of care and maintenance. If you do not feel confident in your ability to perform the maintenance listed below, you may schedule inspection and maintenance at your authorized Pride provider.

The following areas require periodic inspection and/or care and maintenance.

## **TYRE PRESSURE**

- We recommend you maintain the tyre pressure at 30 psi for optimum Scooter performance; overinflating a tyre can cause it to explode.

## **TYRE CONDITION AND TREAD WEAR**

- Regularly inspect your Celebrity XL's tyres for signs of wear.
- Use a rubber conditioner on your Celebrity XL's tyres to preserve them.
- Do not put rubber conditioner on tread area of tyres; the tyres may become dangerously slippery.

## **EXTERIOR SURFACES**

- Bumpers and trim benefit from an occasional application of rubber or vinyl conditioner.
- Do not use rubber or vinyl conditioner on your Celebrity XL's vinyl seat; it may become dangerously slippery.

## **BATTERY TERMINAL CONNECTIONS**

- Ensure the terminal connections remain tight and uncorroded.
- Ensure the batteries sit flat in the battery wells.
- Ensure the battery terminals face the rear of your Celebrity XL.

## **WIRING HARNESES**

- Regularly check all wiring connections.
- Regularly check all wiring insulation, including the charger power cord, for wear or damage.
- Repair or replace any damaged connector, connection, or insulation before you use your Celebrity XL.

## **ABS PLASTIC SHROUDS**

- Apply a light coat of car wax to the shrouds to help retain their high gloss; the shrouds are formed from durable ABS plastic and are coated with an advanced formula urethane paint.

## **AXLE BEARINGS AND THE MOTOR/TRANSAXLE ASSEMBLY**

- You do not need to lubricate these items, as they are all prelubricated and sealed.

## **CONSOLE, CHARGER, AND ELECTRONIC CONTROLLER MODULE**

- Keep these areas away from moisture.
- Let any of these areas dry thoroughly before operating your Celebrity XL if they have been exposed to moisture.

## **STORAGE**

- Refer to "How should I store my Celebrity XL and its batteries?" in V. "Batteries and Charging."

# XI. WARRANTY

## **TWO-YEAR LIMITED WARRANTY**

Structural frame components, including: platform, fork, seat post, and frame welds.  
Drive train, including: differential, motor, and brake.

## **ONE-YEAR LIMITED WARRANTY**

Your Pride Scooter is fully guaranteed for twelve (12) months from the date of purchase against faults arising due to defects in manufacture or materials. This warranty does not detract from, but is in addition to your legal rights.

All electronic parts, including controllers and battery chargers, have a one (1) year warranty. Servicing to the controller or battery charger must be carried out by your local Pride provider. Any attempt to open or dismantle these items renders the guarantee void on that item.

## **NOT COVERED UNDER WARRANTY**

This guarantee does not extend to those items which may need replacement due to normal wear and tear (tyres, belts, bulbs, upholstery, plastic shrouds, motor brushes, fuses, and batteries), or damage to the product caused by misuse or accident for which Pride or its agent cannot be held responsible. This warranty does not include labor or service calls.

## **BATTERIES**

Batteries are covered by a twelve (12) month warranty from the original manufacturer.

Gradual deterioration in performance due to being left in a discharged state, left in cold conditions for long periods of time, or worn out through heavy use is not covered.

## **SERVICE CHECKS AND WARRANTY SERVICE**

Warranty service can be performed by an authorized Pride provider. Please contact your local Pride provider for advice on the current cost affecting the service visit.