

NOTE: The following information is an addition to the information contained in the owner's manual provided with your Q6 Edge power chair. It explains how to install a power lift system onto a Q6 Edge power chair. Please retain this information for your records and contact your Quantum Rehab Provider with any questions.

Power Lift System Option

Your power chair may be equipped with an optional power lift system. While the seat itself may be any one of the styles offered for this model, the way the seat base attaches to the power base is different.

To install the power lift system:



WARNING! Make sure that all attaching hardware is tightened securely to prevent injury and/or equipment damage.

1. Attach the power lift to the four seat towers on the power base.
2. Attach the seat plate interface to the lift interface.
3. Attach the lift interface to the power lift.
4. Attach the seat plate to the bottom of the seat.
5. Attach the seat plate to the seat plate interface.



WARNING! After any adjustments, repairs, or service and before use, make sure that all attaching hardware is tightened securely to prevent injury and/or equipment damage.

NOTE: Refer to the Quantum Optimizing Guide to aid in the installation or adjustment of the power lift system on your Q6 Edge power chair.

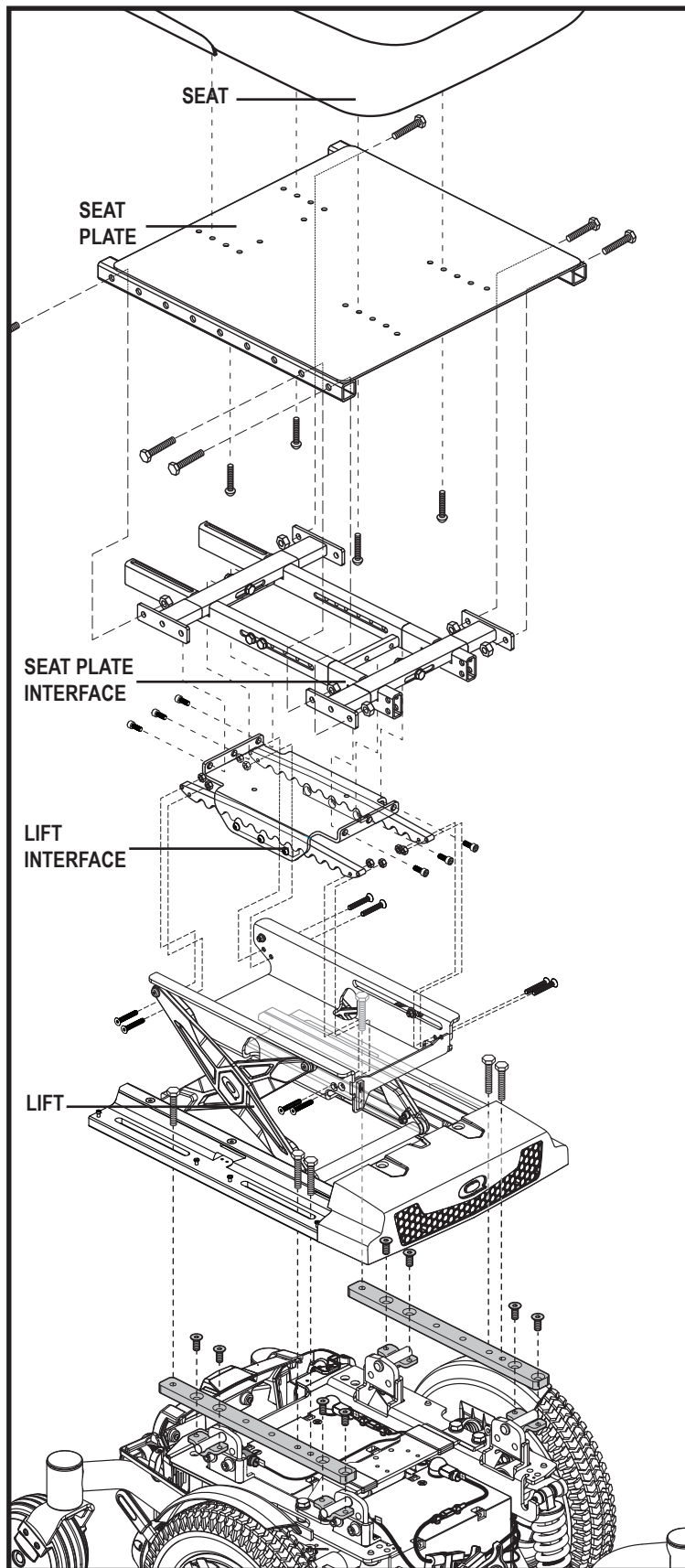


Figure 1. Installation of the Power Lift System

