

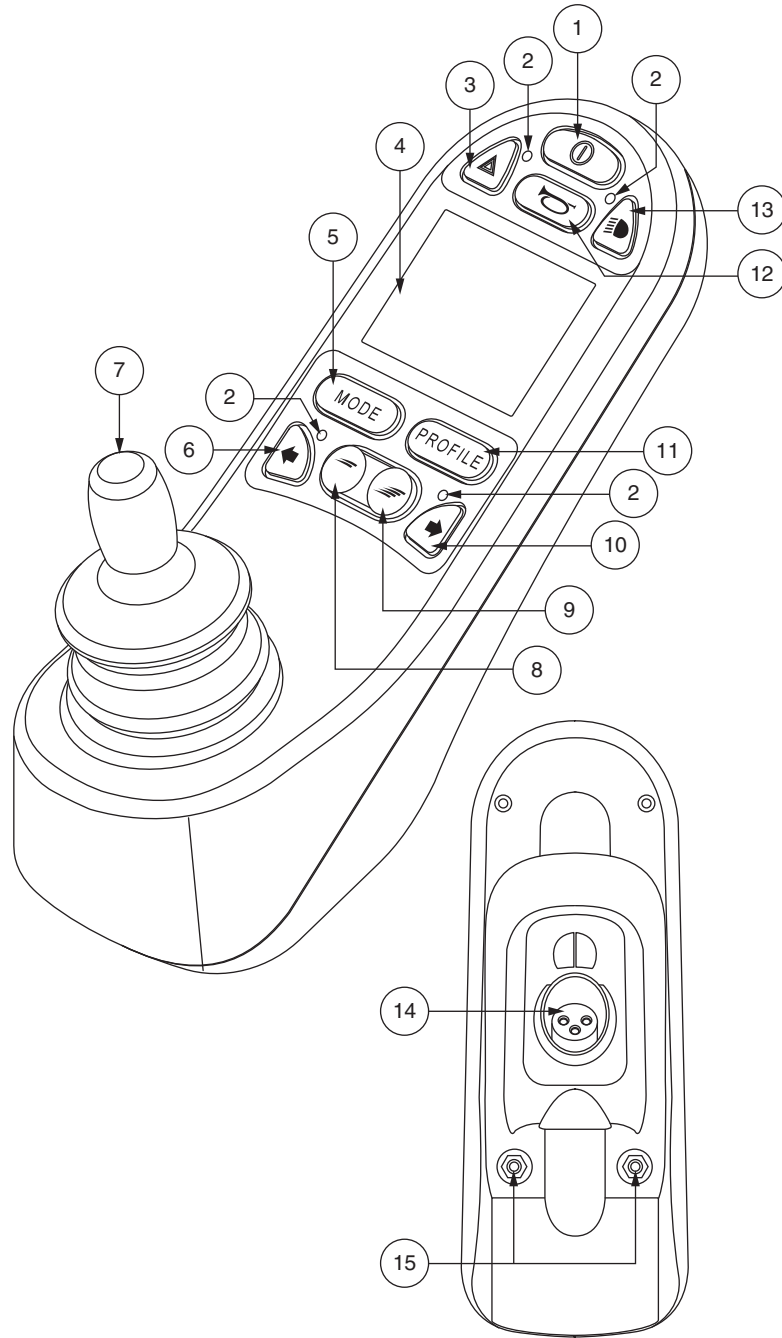


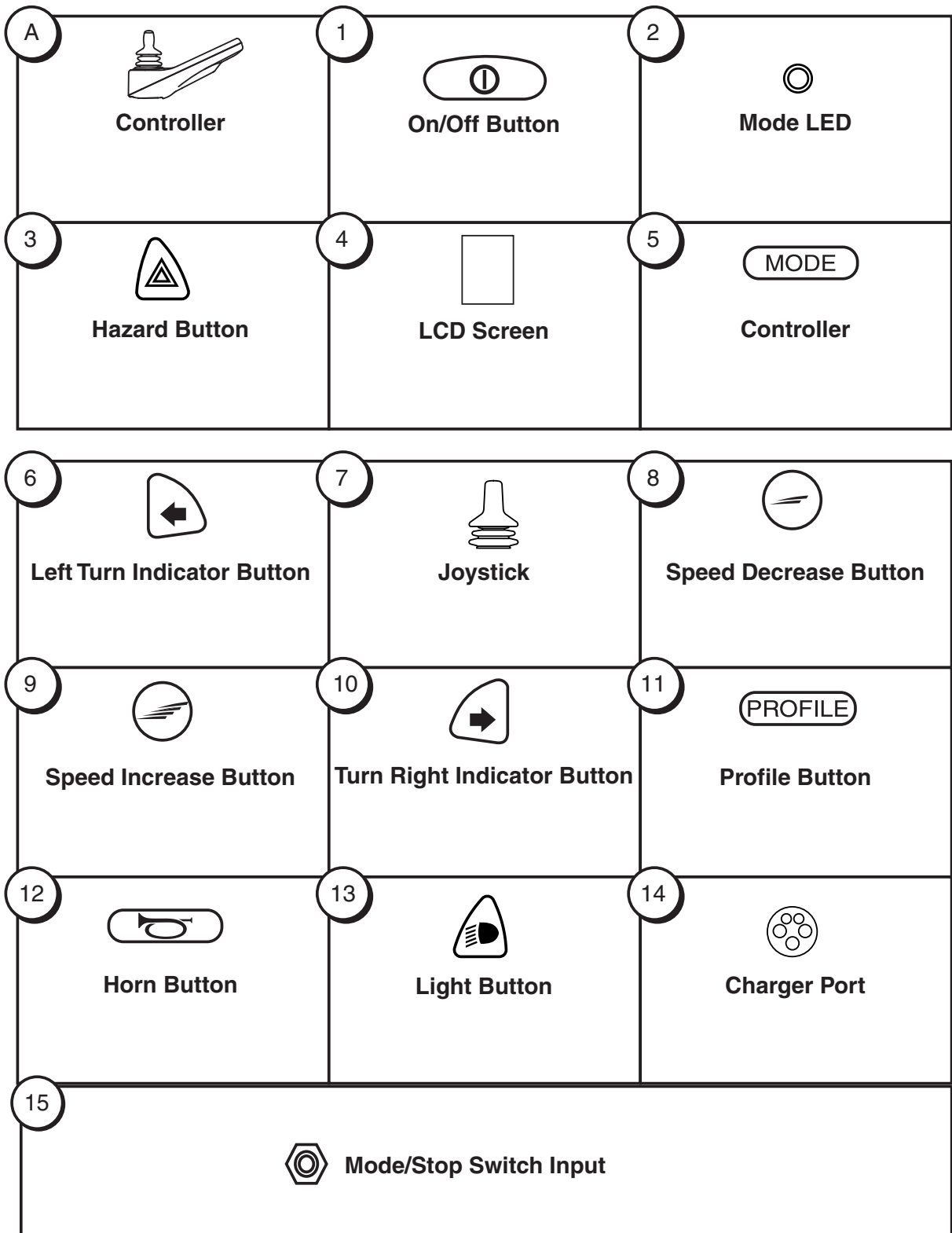
Basic Operation Instructions



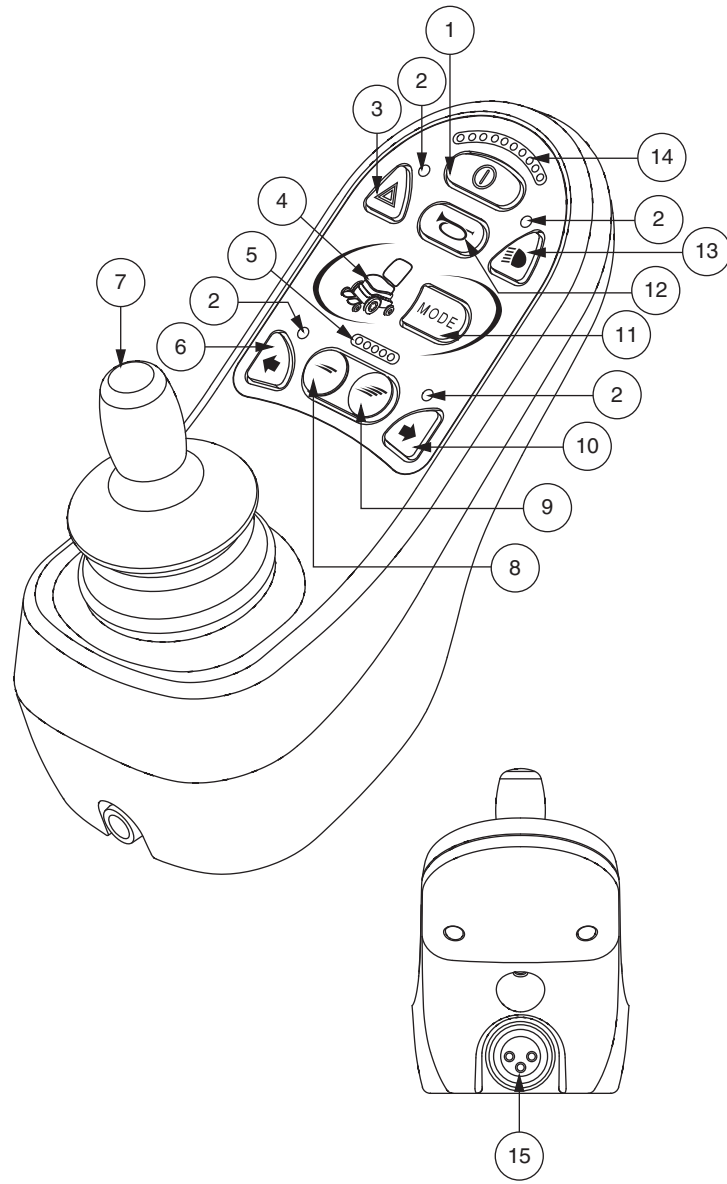
R-net

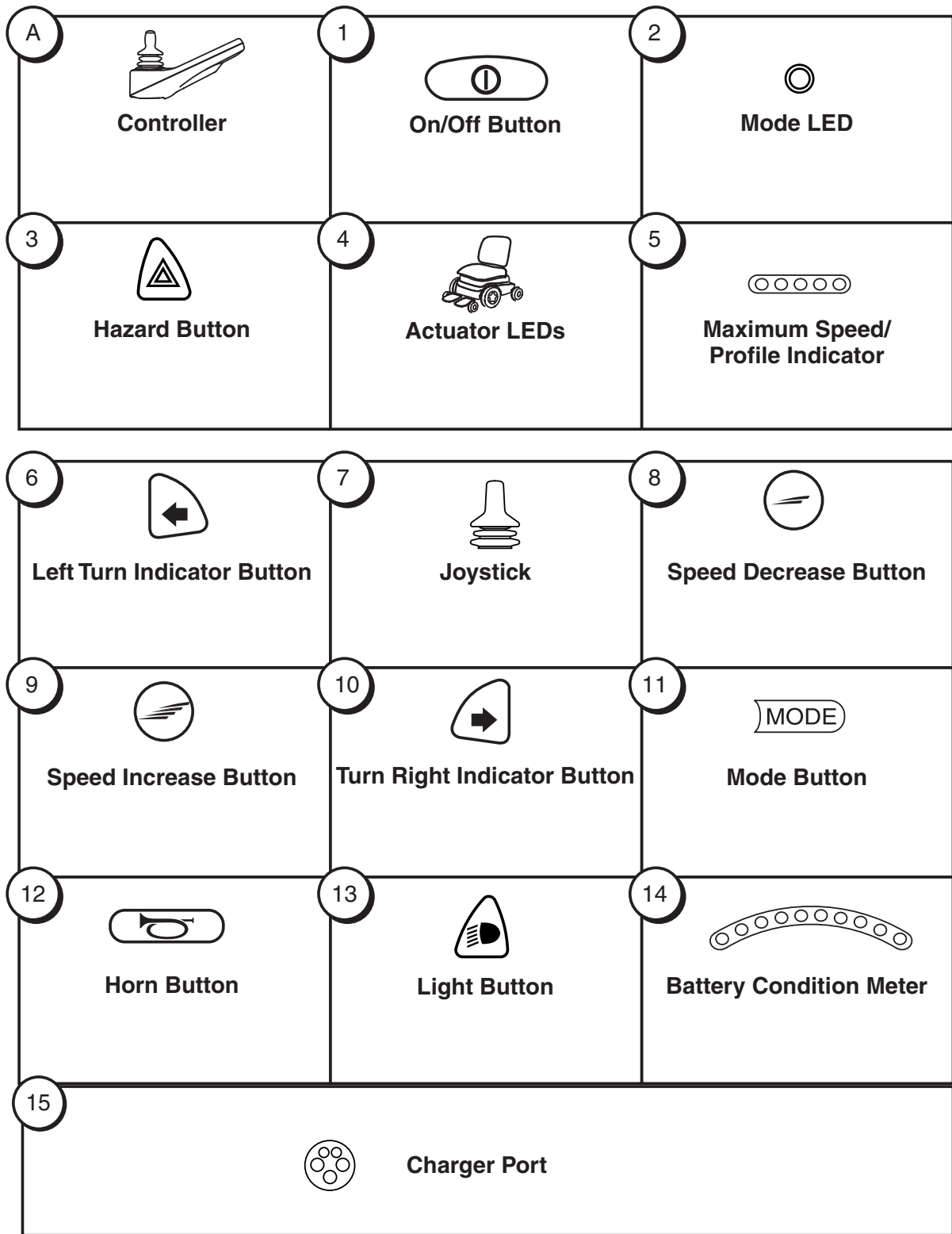
Identification Key





Identification Key







WARNING! A Quantum Rehab Provider or a qualified technician must perform the initial setup of this product and must perform all of the instructions in this manual.

The symbols below are used throughout this owner's manual and on the power chair to identify warnings and important information. It is very important for you to read them and understand them completely.



WARNING! Indicates a potentially hazardous condition/situation. Failure to follow designated procedures can cause either personal injury, component damage, or malfunction. On the product, this icon is represented as a black symbol on a yellow triangle with a black border.



MANDATORY! These actions should be performed as specified. Failure to perform mandatory actions can cause personal injury and/or equipment damage. On the product, this icon is represented as a white symbol on a blue dot with a white border.



PROHIBITED! These actions are prohibited. These actions should not be performed at any time or in any circumstances. Performing a prohibited action can cause personal injury and/or equipment damage. On the product, this icon is represented as a black symbol with a red circle and red slash.

NOTE: *This owner's manual is compiled from the latest specifications and product information available at the time of publication. We reserve the right to make changes as they become necessary. Any changes to our products may cause slight variations between the illustrations and explanations in this manual and the product you have purchased. The latest/current version of this manual is available on our website.*

NOTE: *This product is compliant with WEEE, RoHS, and REACH directives and requirements.*

NOTE: *This product meets IPX4 classification (IEC 60529).*

NOTE: *The R-net and its components are not made with natural rubber latex. Consult with the manufacturer regarding any after-market accessories.*

| | |
|--|----|
| Label Information | 8 |
| R-net Controller | 9 |
| Precautionary Guidelines | 9 |
| Operating the R-net Controller | 9 |
| Joystick | 9 |
| Keypad..... | 9 |
| On/Off Button..... | 9 |
| Horn Button..... | 9 |
| Light Button and Light Mode LED (for Optional Equipment) | 9 |
| Hazard Button and Hazard Mode LED (for Optional Equipment)..... | 9 |
| Mode Button (Actuator Adjustment for Optional Equipment)..... | 10 |
| Profile Button..... | 10 |
| Right/Left Turn Indicator Buttons and LEDs (for Optional Equipment)..... | 10 |
| Speed Increase/Decrease Buttons..... | 10 |
| Battery Condition Meter..... | 11 |
| LCD Screen | 11 |
| Main Menu | 12 |
| 3-pin Off-board Charger/Programming Socket..... | 12 |
| Locking/Unlocking the R-net..... | 12 |
| Actuator Adjustment | 13 |
| Sleep Mode..... | 14 |
| Thermal Rollback..... | 14 |
| Fault Codes | 14 |
| Care and Maintenance | 15 |
| Temperature | 15 |
| Warranty | 15 |

Product Safety Symbols

The symbols below are used on the power chair to identify warnings, mandatory actions, and prohibited actions. It is very important for you to read and understand them completely.



Read and follow the information in the owner's manual.



Avoid exposure to rain, snow, ice, salt, or standing water whenever possible. Maintain and store in a clean and dry condition.



Disposal and recycling—Contact your Pride/Quantum Rehab Provider for information on proper disposal and recycling of your Pride/Quantum product and its packaging.



EMI/RFI—This product has been tested and passed at an immunity level of 20 V/m.

R-net Controller

The R-net Controller is a fully-programmable, modular electronic controller system that allows you to operate your power chair. It is designed to allow the user to have complete control over chair movement and speed.

The controller has been pre-programmed to meet a typical user's needs. The program is set using either a personal computer with software provided by the controller manufacturer or with a hand-held programmer, also provided by the controller manufacturer.



WARNING! The controller program can affect speed, acceleration, deceleration, dynamic stability, and braking. If it is programmed incorrectly or outside of the safe limits as determined by your healthcare professional, it can create a dangerous situation. Only the power chair manufacturer, an authorized representative of the manufacturer, or a trained service technician should program the controller.

Precautionary Guidelines

Before operating the R-net Controller, please read the following. These guidelines are provided for your benefit and will aid you in the safe operation of the controller system.

- Turn off the power to the controller before you are seated in your power chair.
- Follow all of the procedures and heed the warnings as explained in your power chair owner's manual.

Operating the R-net Controller

Joystick

The joystick controls the direction and speed of your power chair. When you move the joystick from the neutral (center) position, the electromagnetic brakes release and allow your power chair to move. The farther you push the joystick from its neutral position, the faster your power chair moves. When you release the joystick and allow it to return to the neutral position, the electromagnetic brakes engage and the power chair comes to a complete stop.

Keypad

The keypad is located directly in front of the joystick. It contains keys that you will use to control your power chair.

On/Off button and Mode Select Lever

The on/off button turns the system on and off.



WARNING! When faced with an emergency stop situation, release the joystick, then press the on/off to stop the power chair. Use caution. Be advised that pressing the on/off button may cause the power chair to stop abruptly.

WARNING! Always turn the power off when you are stationary to prevent unexpected movement.

Horn Button

The horn button activates a warning horn.

Light Button and Light Mode LED (for Optional Equipment)

The light button controls the front headlights and rear running lights. The light indicator will illuminate when the lights are activated. Press once to turn on and press again to turn off.

Hazard Button and Hazard Mode LED (for Optional Equipment)

The hazard button activates both turn indicators at the same time. You can only cancel this by pressing the hazard button again. The hazard LED will illuminate when the hazard button is activated.

Mode Button (Actuator Adjustment for Optional Equipment)

The mode button is used for optional equipment such as a power elevating seat or power elevating leg rests. For specific operation of the actuator buttons, refer to “Actuator Adjustment.”

Profile Button

The profile button is used to change the drive profile. The R-net Controller can be programmed with up to five (5) drive profiles. The current profile is displayed on the LCD screen.

NOTE: The speed/profile increase and speed/profile decrease buttons are used to change the drive profile on controllers equipped with an LED keypad.

To change the drive profile:

1. Push the on/off button to power on the chair and the controller.
2. Press the profile button to select the next available profile.
3. Once the desired profile is displayed, the drive screen will be displayed after a momentary pause.

Right/Left Turn Indicator Buttons and LEDs (for Optional Equipment)

The right/left turn indicator buttons toggle either the right or left turn indicators. The appropriate LED will illuminate when the turn indicator is activated. Press once to turn on and press again to turn off. You can also turn off the selected turn indicator by pressing the opposite indicator button or the hazard button.

Speed Increase/Decrease Buttons

There are two buttons that control the speed of your power chair. Press the speed increase button to increase the speed. Press the speed decrease button to decrease the speed. For controllers equipped with an LCD screen, the maximum speed of the current speed setting is displayed on the maximum speed indicator. The current speed is also displayed on the LCD screen. For controllers equipped with LEDs, the maximum speed of the current speed setting is displayed on the maximum speed/profile indicator.

NOTE: The speed settings are preset at the factory. If your Pride/Quantum Rehab Provider changes the order of these settings, please make note of these changes. Contact your Pride/Quantum Rehab Provider for more information.

NOTE: We recommend that the first few times you operate your power chair, you set the speed to the slowest setting until you become familiar with your new power chair.

Battery Condition Meter

The battery condition meter is located at the top of the LCD screen. This is a 10-segment illuminated display that indicates that the R-net is powered on and also gives the battery status, the R-net status, and the electrical system status.

- **Red, yellow, and green lights lit:** Batteries charged; R-net and electrical system OK.
- **Red, yellow, and green lights flash slowly:** Charge batteries as soon as possible; R-net and electrical system OK.
- **Lights Stepping Up:** The batteries are being charged. Once charging is complete, disconnect the charger and then power the controller off and then on again.
- **Red, yellow, and green lights flash rapidly:** The R-net has detected a problem. Refer to “Fault Codes.”

LCD Screen (for Optional Equipment)

The R-net provides the user with easily intuited feedback information via the LCD screen. The multi-color bar at the top of the screen displays the battery condition meter (see “Battery Condition Meter”). The middle portion of the screen is the drive screen. The bottom portion of the screen displays the drive profile number and any messages. An amber tortoise symbol indicates limited drive operation and a red tortoise symbol indicates that drive operation is prohibited.

In figure 1, the current time is thirty-five minutes past two (in 24-hour clock format). The chair is operating in profile number 1 and profile name “Indoor-Drive” at 1.55 mph. The battery is at approximately 75% state of charge.

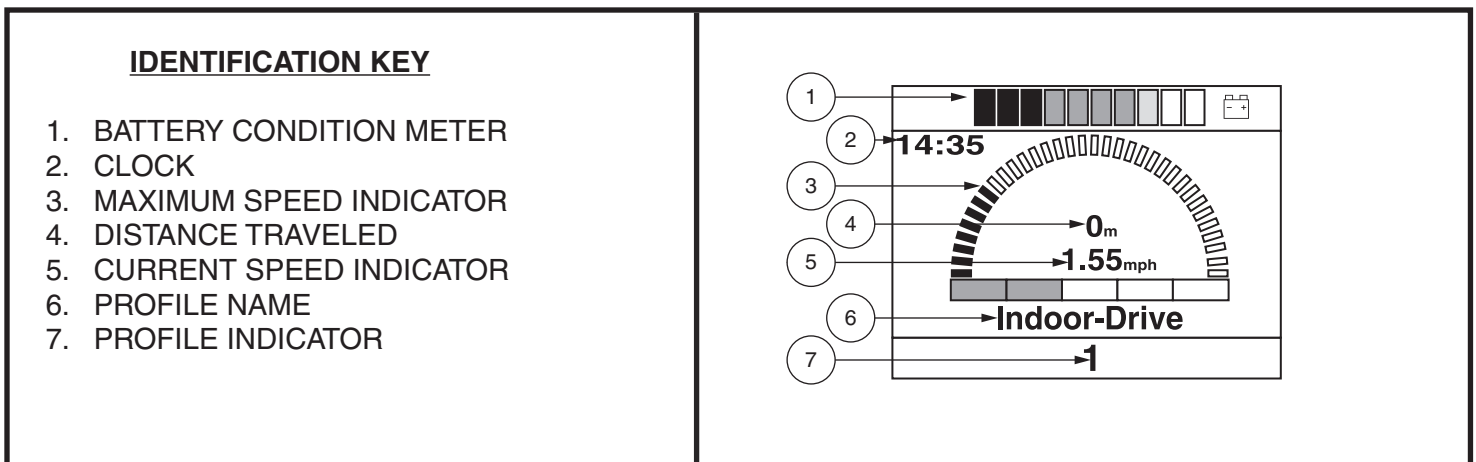


Figure 1. LCD Screen

Main Menu (for Optional Equipment)

The Main Menu screen displays a list of preference settings that are user adjustable: set time, 12-hr./24-hr. clock, odometer, and tripmeter resetting, amount of backlighting, background color, and Infra Red (IR) settings, if equipped.

To make a selection from the Main Menu:

1. Push the on/off button to power on the chair and the controller.
2. Push and hold the speed increase and speed decrease keys simultaneously. The Main Menu screen will be displayed.
3. Push the joystick up or down to select an option. Once the option is selected, push the joystick left or right to either toggle an option on and off or to access option setting screens, depending on the option.
4. When accessing option setting screens, once the desired function is highlighted on the screen, push the joystick to the right to select that function.
5. To return to the previous screen, push the joystick up or down to select Exit and then push the joystick to the left to return to the previous screen.

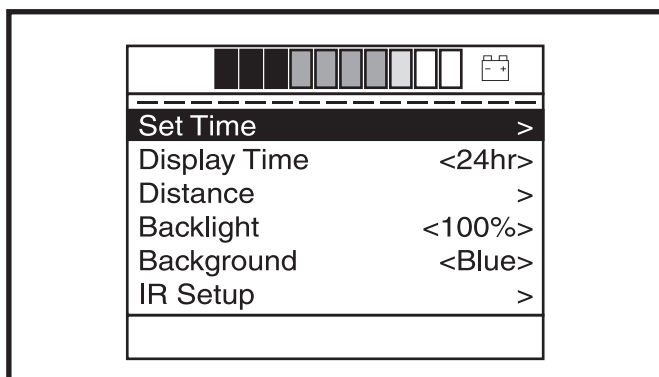


Figure 2. Main Menu Screen

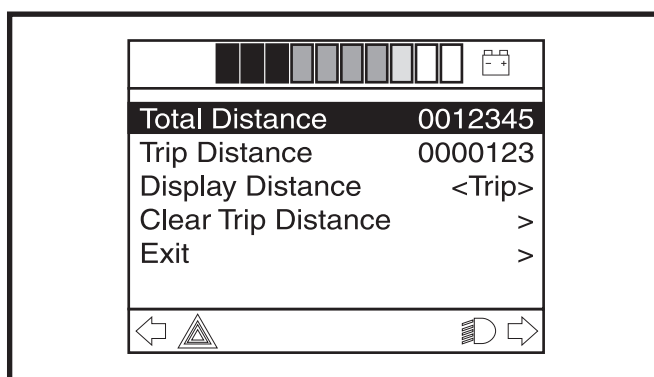


Figure 3. Menu Screens

To set the time:

1. Push the on/off button to power on the chair and the controller.
2. Push and hold the speed increase and speed decrease buttons simultaneously to display the Main Menu Screen. **See figure 2.**
3. Push the joystick up or down to highlight the Set Time option, then push the joystick right or left to select that function.
4. Push the joystick left or right to select the desired option, then push the joystick up or down to make the desired changes.
5. Once all changes have been made, push the joystick left or right to select Exit and then push the joystick up or down to return to the drive screen.

To reset the tripmeter:

1. Push the on/off button to power on the chair and the controller.
2. Push and hold the speed increase and speed decrease buttons simultaneously to display the Main Menu screen. **See figure 2.**
3. Push the joystick up or down to select the Distance option, then push the joystick right or left to display the distance settings. **See figure 3.**
4. Push the joystick up or down to highlight the Clear Trip Distance option, then push the joystick right to select that function.
5. Once all changes have been made, push the joystick up or down to select Exit and then push the joystick right or left to return to the previous screen. Repeat this step to exit screens until you reach the drive screen.

3-pin Off-board Charger/Programming Socket

You may use an off-board charger to charge your power chair batteries through the 3-pin socket located on the front of the R-net. If you use an off-board charger, the charger current should not exceed 8 amps. Contact your Pride/Quantum Rehab Provider for more information.



WARNING! Only chargers with Neutrik NC3MX plugs should be connected to the off-board charger/programming socket. See your Pride/Quantum Rehab Provider for more information.

NOTE: The socket may also be used for reprogramming the R-net. Contact a Pride/Quantum Rehab Provider for more information.

Locking/Unlocking the R-Net

The R-net has a feature that enables you to lock your power chair to prevent unauthorized use.

To lock the R-net:

1. With the R-net powered on, press and hold the on/off button. After one (1) second, the R-net should beep.

2. Release the on/off button.
3. Push the joystick to the full forward position until the R-net beeps.
4. Pull the joystick to the full rearward position until the R-net beeps.
5. Release the joystick. There should be a long beep.
6. The R-net is now locked.

To unlock the R-net:

1. Press the on/off button and power on the R-net.
2. Push the joystick to the full forward position until the R-net beeps.
3. Pull the joystick to the full rearward position until the R-net beeps.
4. Release the joystick. There should be a long beep.
5. The R-net is now unlocked.

NOTE: If the above procedure fails to either lock or unlock the R-net, contact your Pride/Quantum Rehab Provider.

Actuator Adjustment

The R-net can control optional power accessories such as a power elevating seat or power elevating leg rests using the mode button and the joystick.

NOTE: Actuator adjustment may vary depending on the R-net program.

To select and adjust an actuator:

1. Push the on/off button to power on the chair and the controller.
2. Press the mode button to display the actuator screen. **See figure 4.**
3. Push the joystick to the right to cycle through the available actuators. The available actuators will be displayed on the LCD screen or keypad on the controller regardless of whether you are using the controller or attendant control.
4. When the desired actuator is displayed, give a forward or reverse command to the joystick to adjust the actuator.
5. Press the mode button until the drive screen appears to return to drive mode. The drive profile will be displayed momentarily before the drive screen is displayed.

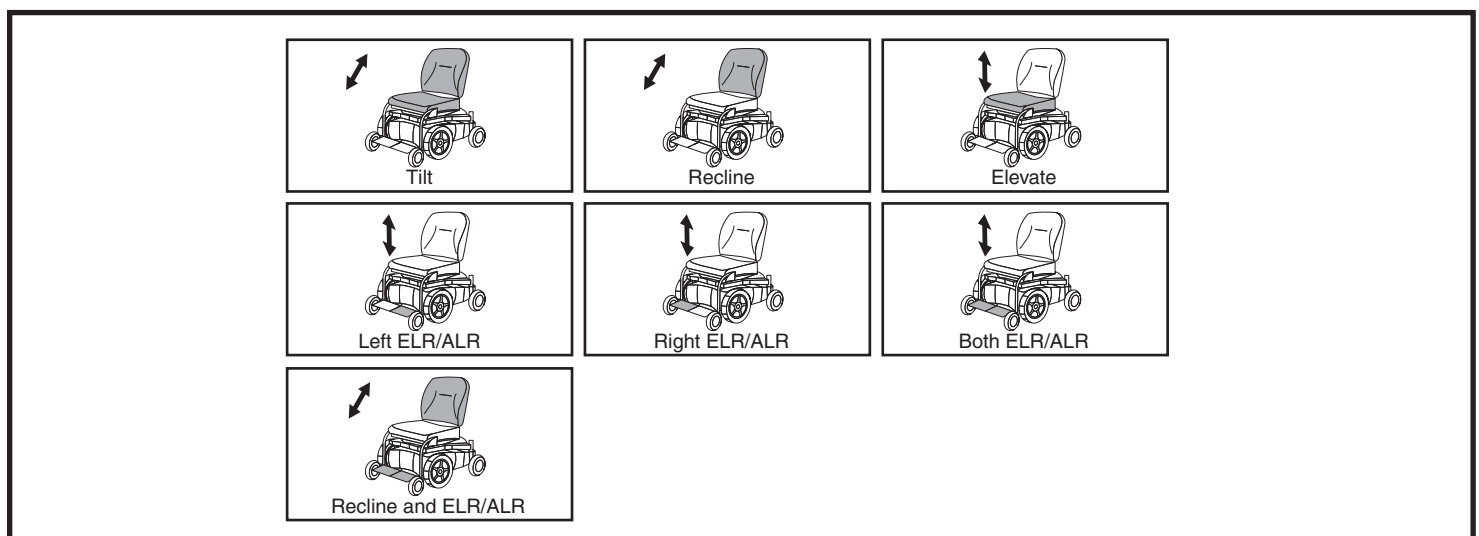


Figure 4. Actuator Screens

Sleep Mode

The R-net Controller has a sleep mode feature. Sleep mode is a built-in circuit that automatically shuts off the main power if the joystick is not moved in any direction for a period of time predetermined by controller program. The battery condition meter lights on the keypad indicate sleep mode by blinking once every five seconds. To restore power and continue, push the on/off button twice.

Thermal Rollback

The R-net Controller is equipped with a thermal rollback circuit. This circuit monitors the temperature of the controller, which roughly translates to motor temperature. In the event that the R-net controller becomes excessively hot, motor current (amperage) is reduced. For every degree above normal temperature, the motor current limit is reduced proportionally. This reduces “power,” which could also reduce power chair speed. Once the R-net Controller reaches its temperature limit, the current output is reduced to zero and your power chair will stop. This allows the electrical components and motors to cool down. When the temperature returns to a safe level, your power chair resumes its normal operation.

Fault Codes

The R-net Controller is designed with the user’s safety as the prime consideration. It incorporates many sophisticated self-test features which search for potential problems at a rate of 100 times per second. If the R-net detects a problem either in its own circuits or in the power chair’s electrical system, it may decide to stop the power chair, depending on the severity of the problem. The R-net is designed to maximize the user’s safety under all normal conditions. The following table identifies the individual fault codes. Fault codes are displayed as a rapid flashing of the lights. If you encounter one of these fault codes or experience any other problems with your power chair, turn your controller off and then on again. If the problem persists, contact a Pride/Quantum Rehab Provider.

| Flashing Lights | Diagnosis and Solution |
|-----------------|---|
| 1 | The batteries need charging or there is a bad connection to the batteries. Check the connections to the batteries. If the connections are good, try charging the batteries. |
| 2 | The left motor has a bad connection. Check the left motor connection. |
| 3 | The left motor has a short circuit to another connection. Contact your Pride/Quantum Rehab Provider. |
| 4 | The right motor has a bad connection. Check right motor connection. |
| 5 | The right motor has a short circuit to another connection. Contact your Pride/Quantum Rehab Provider. |
| 6 | The power chair is being inhibited. Contact your Pride/Quantum Rehab Provider. |
| 7 | A joystick fault is indicated. Make sure that the joystick is in the center |
| 8 | A controller system fault is indicated. Make sure that all connections are secure and the batteries are fully charged. |
| 9 | The parking brakes have a bad connection. Check the parking brake motor connections. Make sure the controller connections are secure. |
| 10 | An excessive voltage has been applied to the controller. This is usually caused by a poor battery connection. Check the battery connections. |

Care and Maintenance

Refer to your power chair owner's manual for proper cleaning and disposal instructions.

Temperature

Some of the parts of your power chair are susceptible to extreme changes in temperature. Always keep your power chair between the temperatures of 18°F (-8°C) and 122°F (50°C)

Warranty

Refer to your power chair owner's manual for specific information on controller warranty.



USA

401 York Avenue
Duryea, PA 18642

Canada

5096 South Service Road
Beamsville, Ontario L0R 1B3

UK

32 Wedgwood Road
Bicester, Oxfordshire OX26 4UL
[*www.quantumrehab.co.uk*](http://www.quantumrehab.co.uk)

Australia

20-24 Apollo Drive
Hallam, Victoria 3803
[*www.quantumrehab.com.au*](http://www.quantumrehab.com.au)

New Zealand

38 Lansford Crescent
Avondale
Auckland, New Zealand 1007
[*www.pridemobility.co.nz*](http://www.pridemobility.co.nz)

Italy

Via del Progresso, ang. Via del Lavoro
Loc. Prato della Corte
00065 Fiano Romano (RM)
[*www.quantumrehab-italia.it*](http://www.quantumrehab-italia.it)

B.V.

Castricummer Werf 26
1901 RW Castricum
The Netherlands
[*www.quantumrehab.eu*](http://www.quantumrehab.eu)

[*www.quantumrehab.com*](http://www.quantumrehab.com)

