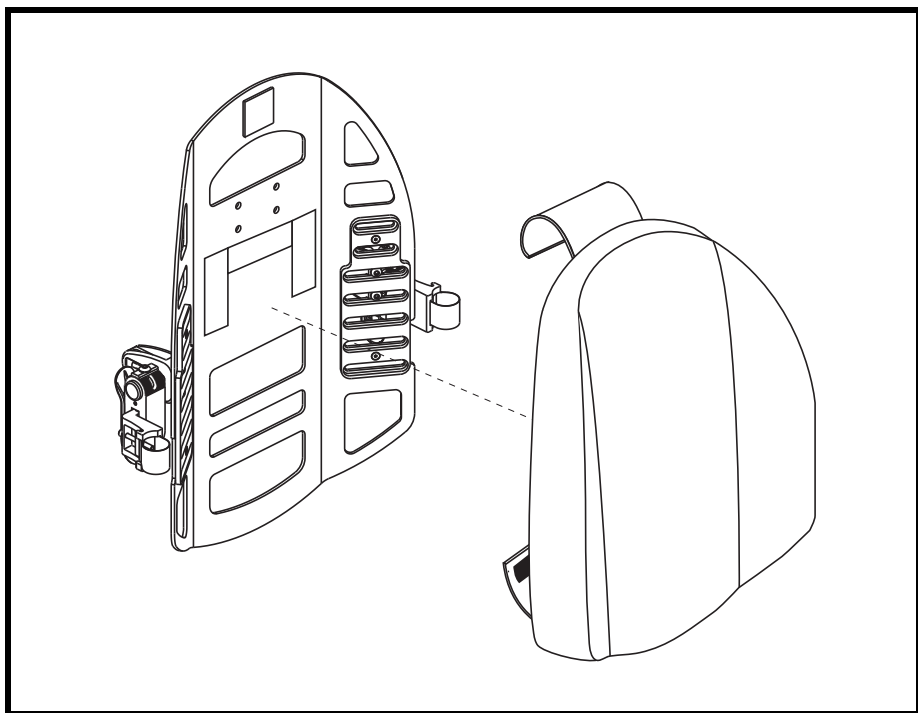


# INSTALLATION AND CARE INSTRUCTIONS

---

## **Synergy<sup>TM</sup>** **Shape Back 2 Point,<sup>®</sup>** **Shape Deep Contour**

ACN# 088 609 661



**QUANTUM<sup>®</sup>**  
**REHAB**

---

A Division of Pride Mobility Products<sup>®</sup> Corp.

# SAFETY GUIDELINES



**WARNING! A Quantum Rehab Provider or a qualified technician must perform the initial setup of this product and must perform all of the instructions in this manual.**

The symbols below are used throughout this owner's manual and on the product to identify warnings and important information. It is very important for you to read them and understand them completely.



**WARNING! Indicates a potentially hazardous condition/situation. Failure to follow designated procedures can cause either personal injury, component damage, or malfunction. On the product, this icon is represented as a black symbol on a yellow triangle with a black border.**



**MANDATORY! These actions should be performed as specified. Failure to perform mandatory actions can cause personal injury and/or equipment damage. On the product, this icon is represented as a white symbol on a blue dot with a white border.**



**PROHIBITED! These actions are prohibited. These actions should not be performed at any time or in any circumstances. Performing a prohibited action can cause personal injury and/or equipment damage. On the product, this icon is represented as a black symbol with a red circle and a red slash.**

***NOTE: These instructions are compiled from the latest specifications and product information available at the time of publication. We reserve the right to make changes as they become necessary. Any changes to our products may cause slight variations between the illustrations and explanations in this manual and the product you have purchased. The latest/current version of this manual is available on our website.***



ACN 088 609 661



Copyright © 2010

Pride Mobility Products Corporation

INFMANU3854/Rev A/March 2010

# TABLE OF CONTENTS

<b>LABEL INFORMATION.....</b>	<b>4</b>
<b>INTRODUCTION.....</b>	<b>5</b>
<b>THE SYNERGY SHAPE BACK 2 POINT.....</b>	<b>7</b>
<b>INSTALLATION AND USE (ADJUSTABLE MOUNTING SYSTEM ONLY).....</b>	<b>9</b>
<b>INSTALLATION AND USE (BOLT-ON MOUNTING SYSTEM ONLY).....</b>	<b>12</b>
<b>COMFORT ADJUSTMENTS (ADJUSTABLE MOUNTING SYSTEM ONLY).....</b>	<b>14</b>
<b>REMOVING THE SYNERGY SHAPE BACK 2 POINT (ADJUSTABLE MOUNTING SYSTEM ONLY) .....</b>	<b>17</b>
<b>CLEANING .....</b>	<b>18</b>
<b>STORAGE .....</b>	<b>19</b>
<b>CARE AND MAINTENANCE.....</b>	<b>19</b>
<b>WARRANTY .....</b>	<b>20</b>

# LABEL INFORMATION

## PRODUCT SAFETY SYMBOLS

The symbols below are used on the product to identify warnings, mandatory actions, and prohibited actions. It is very important for you to read and understand them completely.



**Read and follow the information in the owner's manual.**



**Maximum seating weight.**



**Disposal and recycling — Contact your Quantum Rehab Provider for information on proper disposal and recycling of your Pride product and its packaging.**



## INTRODUCTION

WELCOME to Quantum Rehab, a division of Pride Mobility Products (Pride). The product you have purchased combines state-of-the-art components with **safety**, comfort, and styling in mind. We are confident that the design features will provide you with the conveniences you expect during your daily activities. Understanding how to **safely** use and care for this product should bring you years of trouble free operations and service.

**Read and follow** all instructions, warnings, and notes in this manual before attempting to operate your product for the first time. You must also read all instructions, warnings, and notes contained in any supplemental instructional booklets for the controller, front riggings, and/or seating system that accompanied your power chair before initial operation. Your **safety** depends upon you, as well as your provider, caretaker, or healthcare professional in using good judgement.

This manual is to be used in addition to the owner's manual that came with your chair. If there is any information in this manual which you do not understand, or if you require additional assistance for setup or operation, please contact your Quantum Rehab Provider. **Failure to follow the instructions, warnings, and notes in this manual and those located on your Pride product can result in personal injury and/or product damage and will void Pride's product warranty.**

## PURCHASER'S AGREEMENT

By accepting delivery of this product, you promise that you will not change, alter, or modify this product or remove or render unusable or unsafe any guards, shields, or other safety features of this product; fail, refuse, or neglect to install any retrofit kits from time to time provided by Pride to enhance or preserve the safe use of this product.

## INFORMATION EXCHANGE

We want to hear your questions, comments, and suggestions about this manual. We would also like to hear about the safety and reliability of your new Pride product, and about the service you received from your Quantum Rehab Provider. Please notify us of any change of address, so we can keep you apprised of important information about safety, new products, and new options that can increase your ability to use and enjoy your Pride product.

Please feel free to contact us at the address below:

Pride Mobility Products Corporation  
Attn: Customer Care Department  
182 Susquehanna Avenue  
Exeter, PA 18643-2694

***NOTE: If you ever lose or misplace your product registration card or your copy of this manual, contact us and we will be glad to send you a new one immediately.***

**My Quantum Rehab Provider Is:**

Name: \_\_\_\_\_

Address: \_\_\_\_\_

Phone Number: \_\_\_\_\_

Purchase Date: \_\_\_\_\_

THE SYNERGY SHAPE BACK 2 POINT

The Synergy Shape Back 2 Point is a unique seatback system that is available in standard, tall, low, and deep contour versions. The Shape Back 2 Point is available with a completely adjustable mounting system to accommodate user comfort and positioning needs or a simplified bolt-on system. **Figures 1, 2, and 3** provide information on the Synergy Shape Back 2 Point components and cushions.

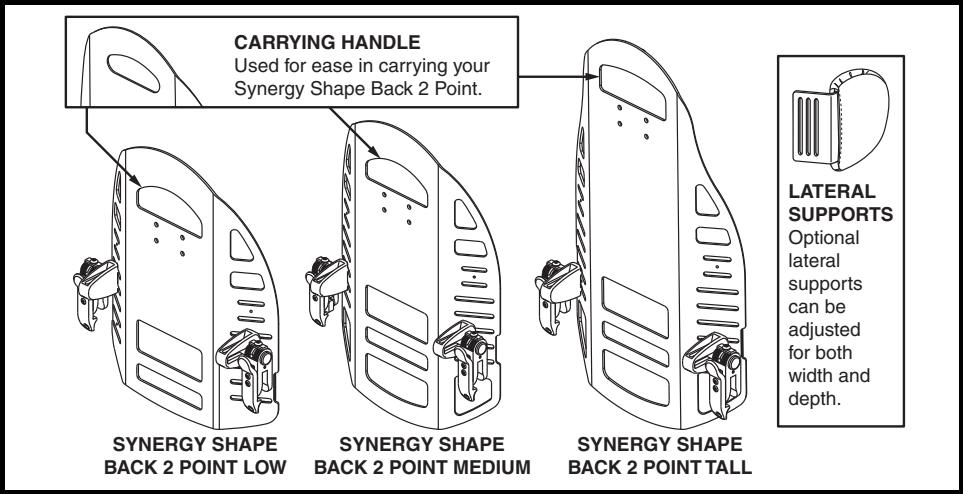


Figure 1. Synergy Shape Back 2 Point – Back and Lateral Components

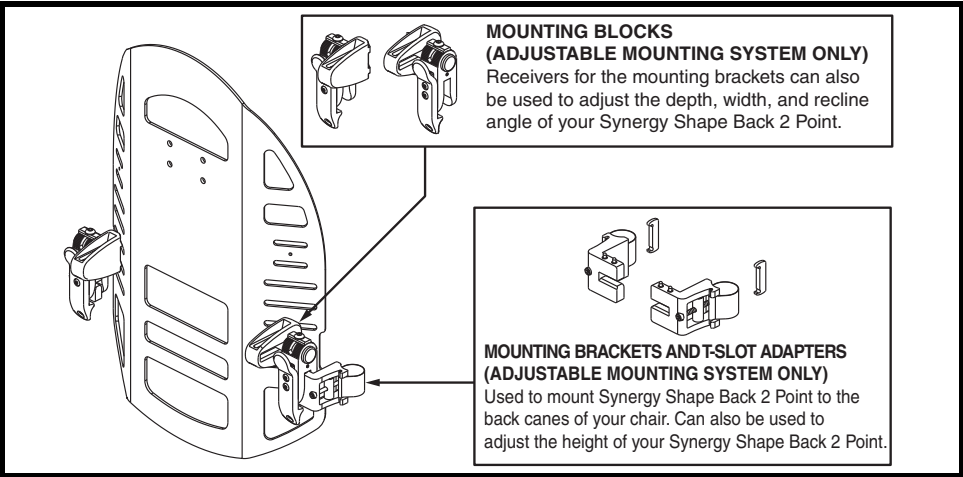
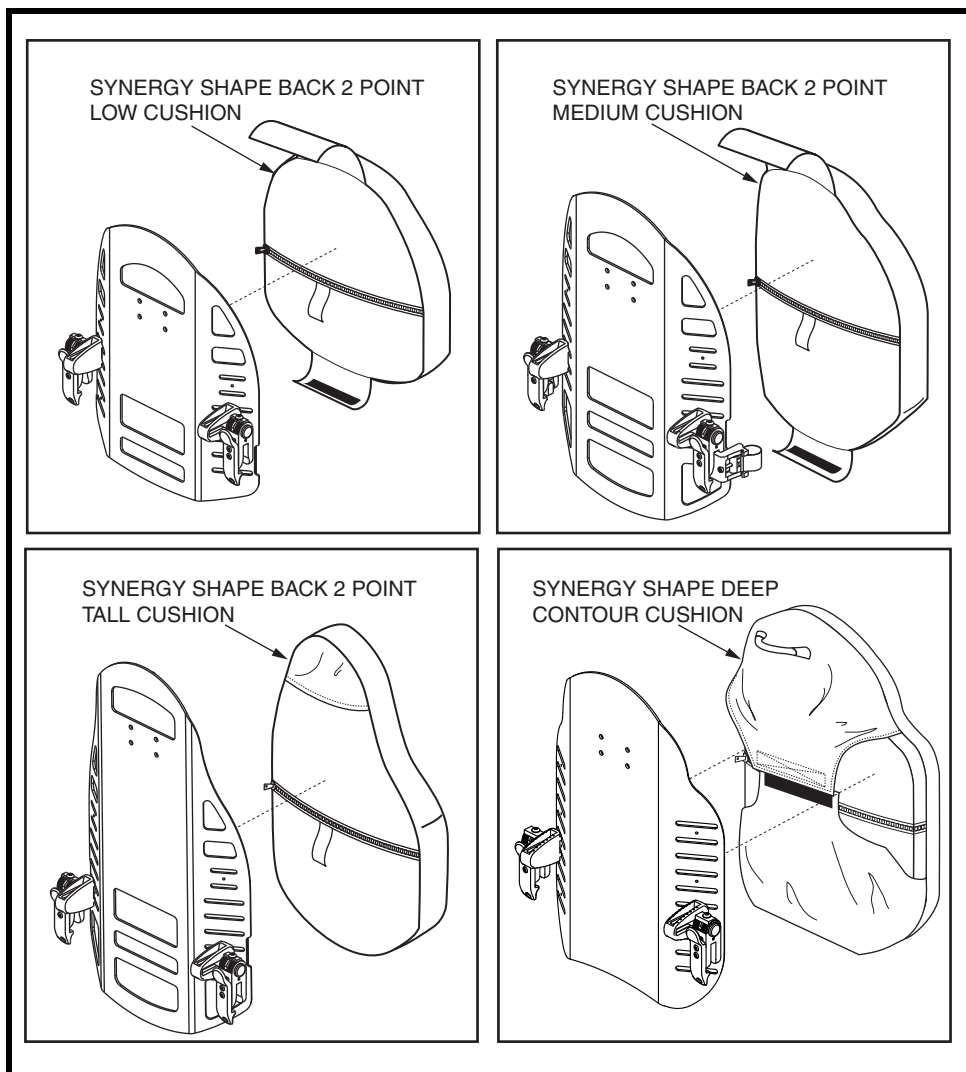


Figure 2. Synergy Shape Back 2 Point – Mounting Bracket Components

Use these diagrams to familiarize yourself with the function and location of each component before using the Synergy Shape Back 2 Point.



**Figure 3. Synergy Shape Back 2 Point Cushions**



## INSTALLATION AND USE (ADJUSTABLE MOUNTING SYSTEM ONLY)

### To install the Synergy Shape Back 2 Point:

1. Hold the Synergy Shape Back 2 Point up to the desired height on the back canes and make note of where the mounting brackets will be located.
2. Install the T-slot adapter if necessary (for slotted canes).
3. Starting on the inside of the back cane that faces the center of the chair, wrap the mounting band around the outside of the back cane. Fasten the mounting pin on the mounting band into the slot on the receiver. **See figure 4.**
4. Tighten the mounting screw.
5. Repeat for the other side.

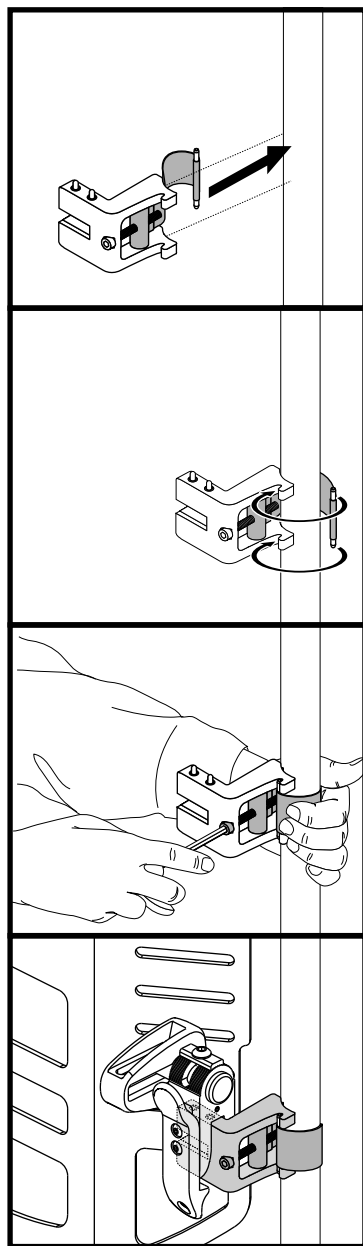


**WARNING! Ensure the hardware is tight.**

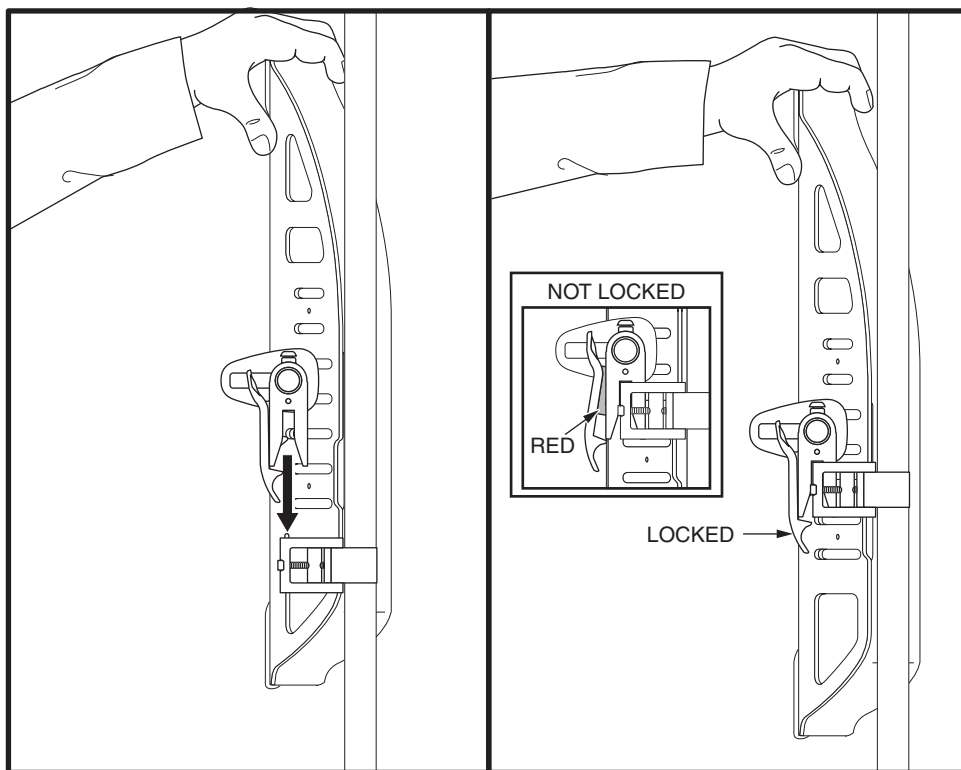
6. Once the mounting brackets are in place, stand behind the chair and align the mounting blocks on the seatback with the mounting brackets making sure that the seatback is positioned just inside the “L” of the mounting block. **See figure 5.** Push the seatback downward until it clicks into place.

**NOTE:** *If any red is visible on the mounting bracket, your seatback is not locked into place. See figure 5.*

7. Install the Synergy Shape Back 2 Point cushion.



**Figure 4. Mounting Bracket Installation on Solid Canes**



**Figure 5. Installing the Synergy Shape Back 2 Point**

## Seatback Width

The seatback width adjustment range is 2 in. (5 cm) to accommodate different chair widths.

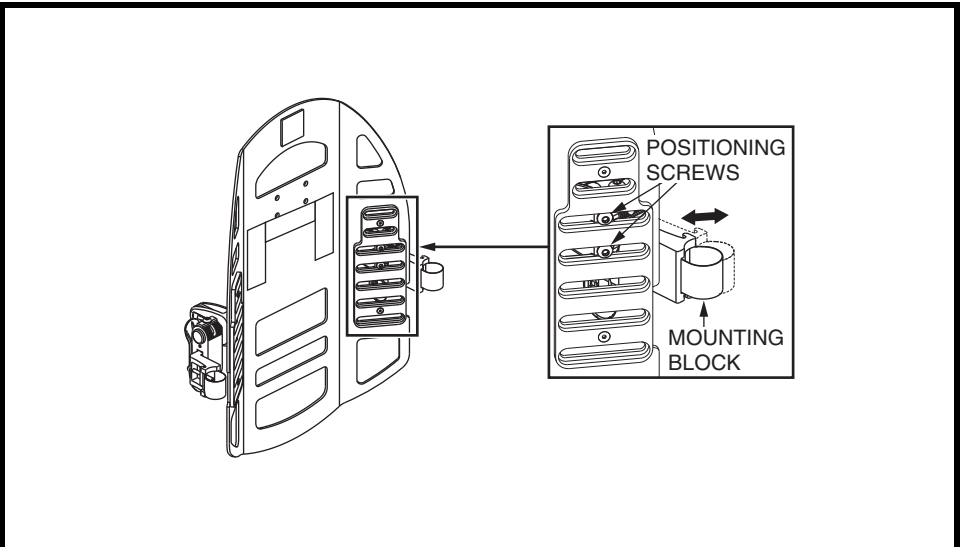
### To adjust for different chair widths:

1. Loosen the positioning screws in the mounting block. **See figures 6 and 7.**
2. Slide the mounting blocks closer to the edge of the seatback for wider chairs and closer to the middle of the seatback for narrower chairs. **See figures 6 and 7.**
3. Tighten the positioning screws in the mounting block.
4. Repeat for the other side.

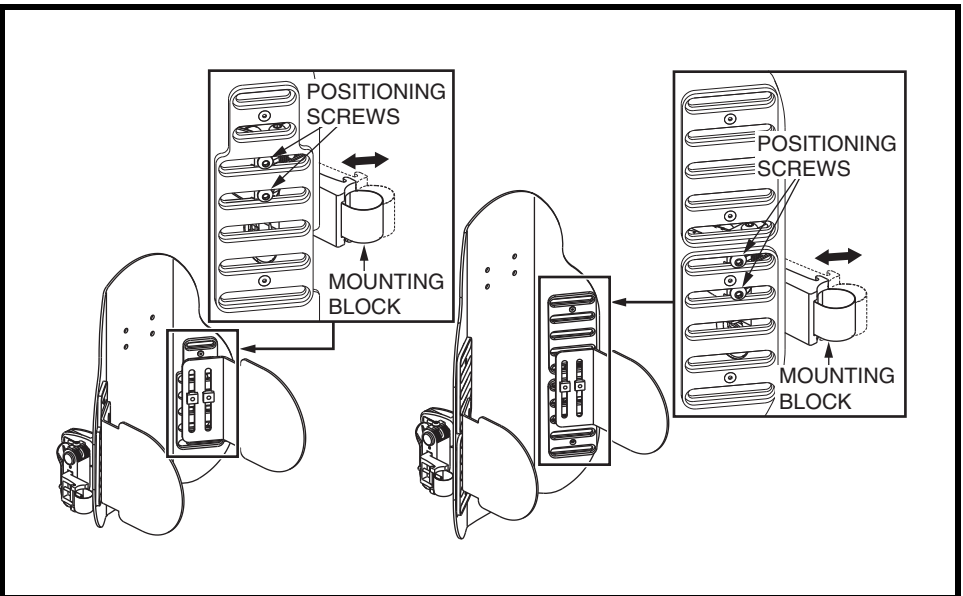
**NOTE:** Both pin springs on each side of the mounting block must be covered. See figure 8.



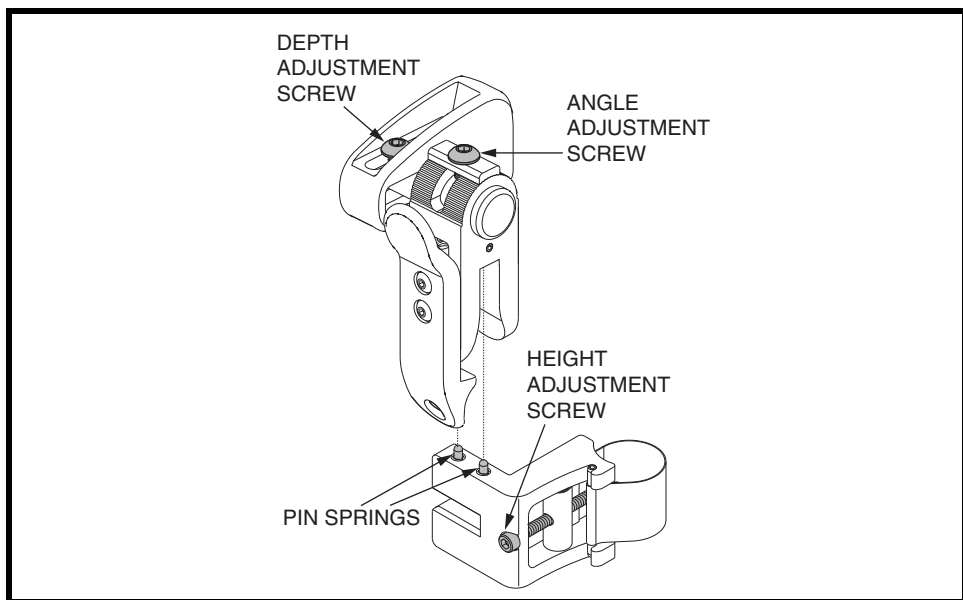
**MANDATORY! Do not exceed the weight capacity listed in your mobility product owner’s manual or 250 lbs. (113 kg), whichever is less, including accessories.**



**Figure 6. Seatback Width Adjustment – Shape Back 2 Point**



**Figure 7. Seatback Width Adjustment – Shape Deep Contour**



**Figure 8. Mounting Components**

## INSTALLATION AND USE (BOLT-ON MOUNTING SYSTEM ONLY)

### To install the Synergy Shape Back 2 Point:

1. Hold the Synergy Shape Back 2 Point up to the desired height on the back canes and make note of the location.
2. Insert the T-nuts into each back cane and attach the securement brackets to the T-nuts. **See figure 9.**
3. Hold the Synergy Shape Back 2 Point up to the desired position and attach it to the securement brackets as shown in **figure 9.**
4. Install the Synergy Shape Back 2 Point cushion.



**WARNING! Ensure the hardware is tight.**

**NOTE:** *The zipper on the cushion will face the rear of the seat.*



**MANDATORY! Do not exceed the weight capacity listed in your mobility product owner's manual or 250 lbs. (113 kg), whichever is less, including accessories.**

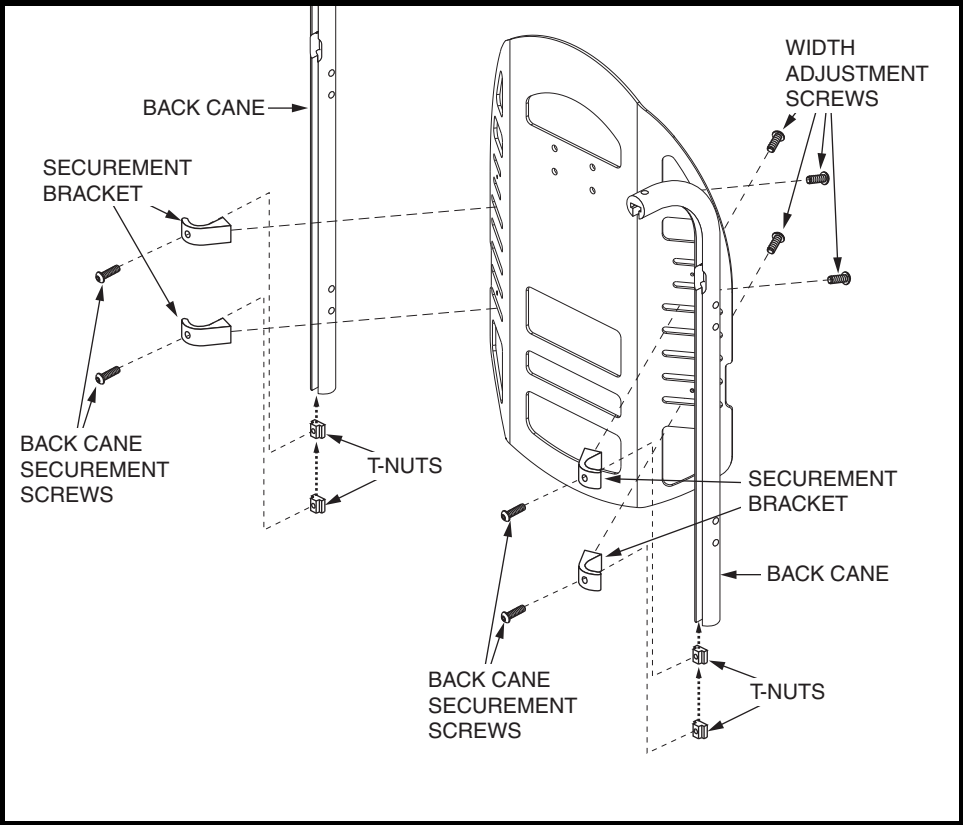


Figure 9. Bolt-On Installation

## COMFORT ADJUSTMENTS (ADJUSTABLE MOUNTING SYSTEM ONLY)

Once you are familiar with the operation of your chair, there are adjustments you can make to your Synergy Shape Back 2 Point to increase your comfort, like seatback depth, recline angle, and seatback height. See figures 10, 11, and 12.

**WARNING! If your Synergy Shape Back 2 Point was configured by your Quantum Rehab Provider, please consult your healthcare professional before changing the position of your Synergy Shape Back 2 Point.**



**WARNING! While Pride recommends that comfort adjustments be made without the occupant in the chair, it is possible to adjust the seatback depth and recline angle with the occupant in the chair so that the required changes can be made for positioning requirements and optimal user comfort. The occupant must be removed before making changes to the seatback height and seatback width.**

### Seatback Depth

The seatback depth adjustment range is 2 in. (5 cm).

#### To change seatback depth:

1. Loosen both depth adjustment screws. See figure 10.
2. Position the seatback to the desired depth.
3. Tighten both depth adjustment screws.



**WARNING! When adjustments are complete, be sure both depth adjustment screws are tight.**

### Recline Angle

The recline angle can be adjusted from -33° to 57°.

#### To increase the recline or precline angle:

1. Loosen the angle adjustment screw on each mounting block and raise the pressure washer. See figure 11.
2. Position the seatback to the desired angle.
3. Tighten the angle adjustment screws and secure the pressure washers.



**WARNING! When adjustments are complete, be sure both angle adjustment screws are tight.**

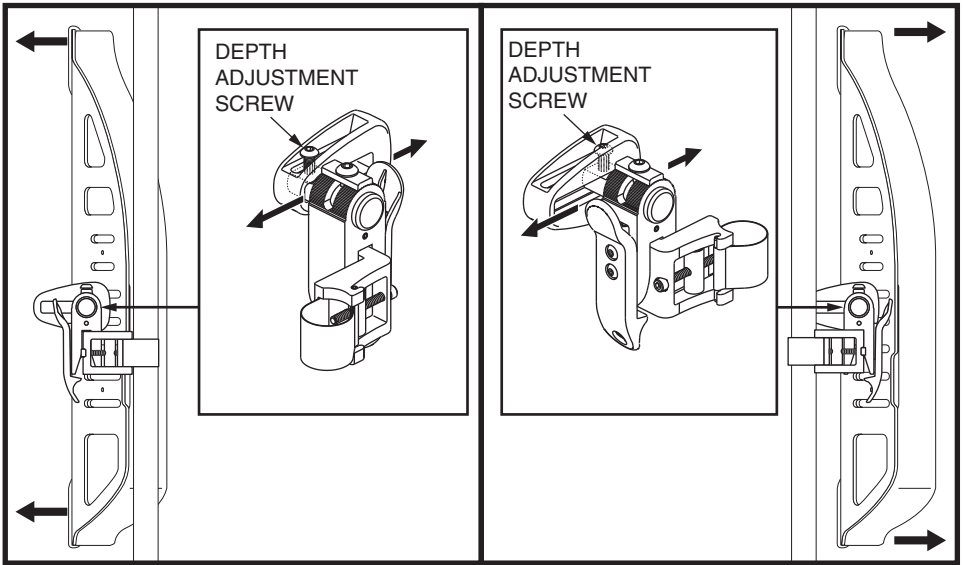


Figure 10. Seatback Depth Adjustment

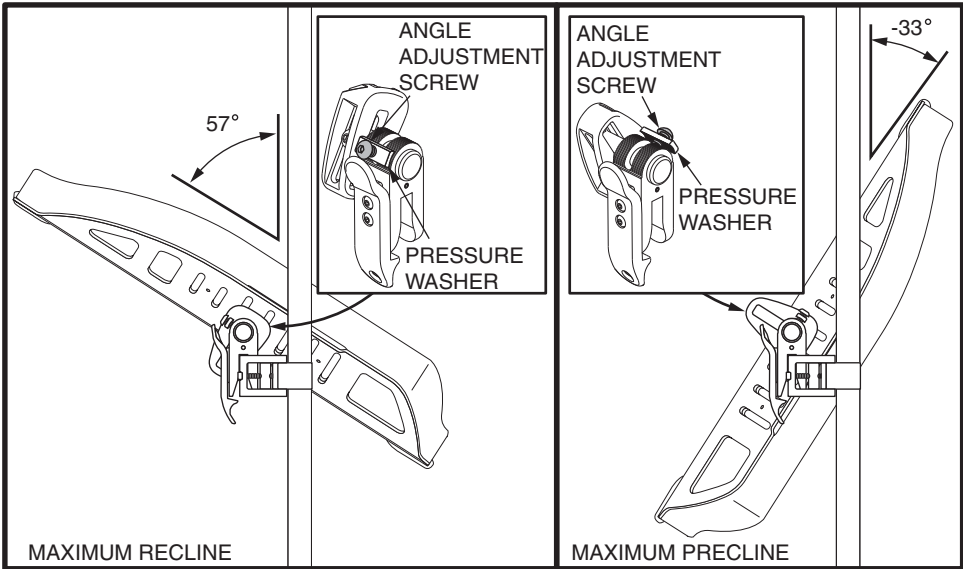


Figure 11. Maximum Recline and Precline Angle Adjustment

## Seatback Height

The seatback height adjustment range depends on the length of your back canes.



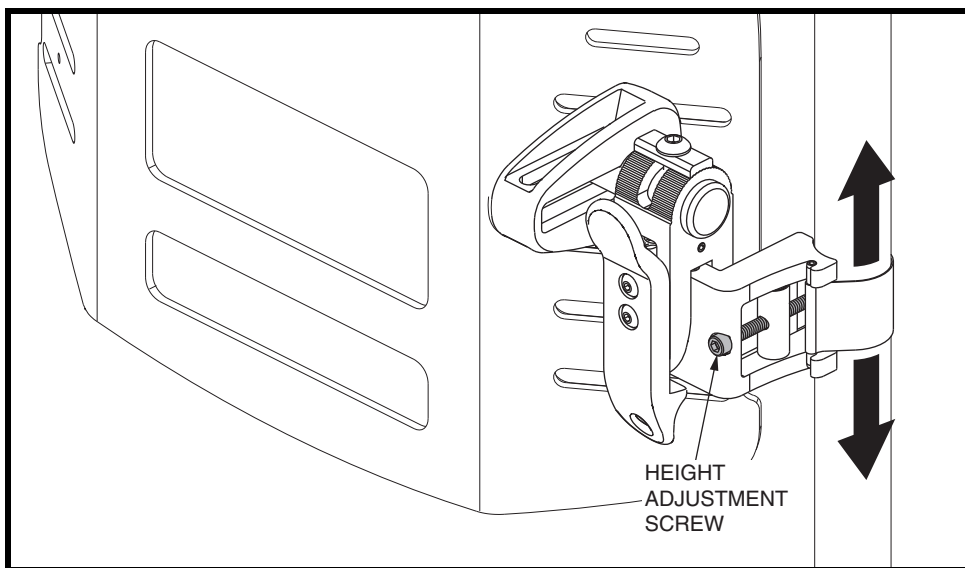
**WARNING! The occupant must be removed from the chair before adjusting the seatback height.**

### To adjust the seatback height:

1. Set the wheel lock or turn the controller off, if equipped.
2. Loosen the height adjustment screw on each mounting bracket.
3. Position the seatback to the desired height. **See figure 12.**
4. Tighten the height adjustment screws.



**WARNING! When adjustments are complete, be sure to tighten both height adjustment screws.**



**Figure 12. Seatback Height Adjustment**



## REMOVING THE SYNERGY SHAPE BACK 2 POINT (ADJUSTABLE MOUNTING SYSTEM ONLY)

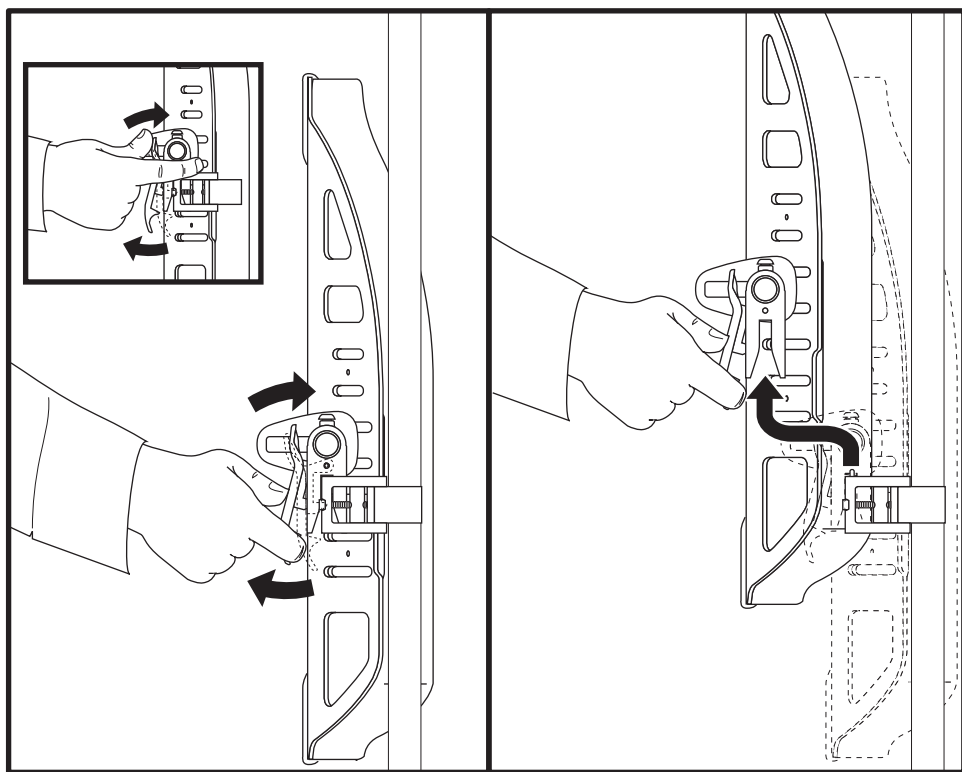
Your Synergy Shape Back 2 Point can easily be removed using the quick-release system.



**WARNING! Do not attempt to remove the Synergy Shape Back 2 Point when the chair is occupied.**

### To remove the Synergy Shape Back 2 Point:

1. Set the wheel lock or turn the controller off, if equipped.
2. Bump either the top or bottom release lever at the rear of the seatback and pull up on the seatback. See **figure 13**.



**Figure 13. Removing the Synergy Shape Back 2 Point**

## CLEANING

The Synergy Shape Back 2 Point can be easily cleaned.

### To clean the Synergy Shape Back 2 Point:

1. Locate the zipper on the back side of the outer cover. See figure 14.
2. Unzip the cover and pull out the inner cushion.
3. Wash the outer cover in a washing machine on the COLD setting.

**WARNING! Do not use bleach when washing the cover.**



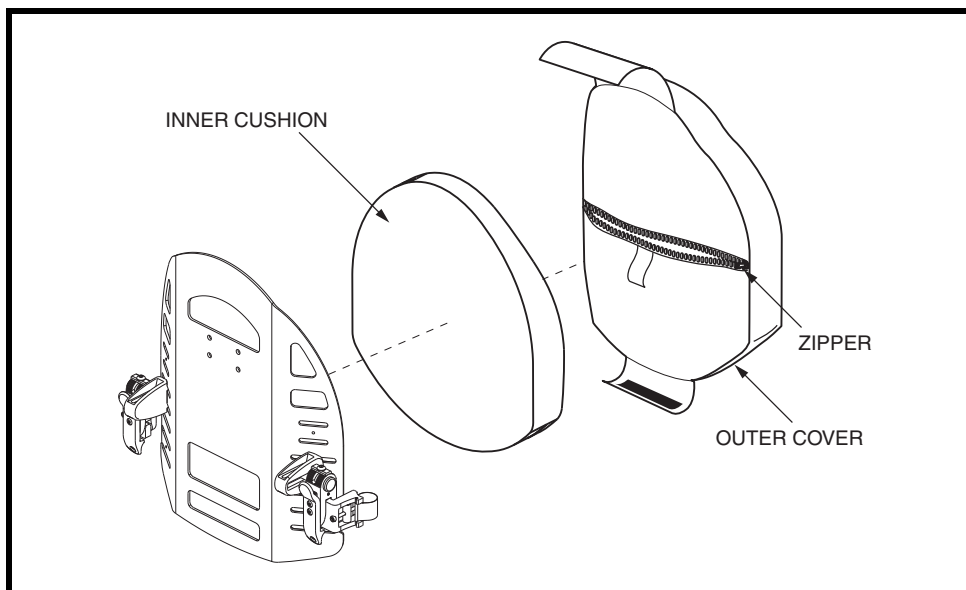
**WARNING! Never submerge the inner cushion of your Synergy Shape Back 2 Point in water. The inner cushion is protected by a fluid-resistant cover, but it is not intended for direct exposure to water.**

4. Allow the outer cover to air dry.



**WARNING! Do not attempt to put the outer cover in a dryer. This may cause shrinking.**

5. Once dry, put the inner cushion back inside the cover. Zip the cover closed, and replace the Synergy Shape Back 2 Point onto the seat of your chair.



**Figure 14. Synergy Shape Back 2 Point Cover Removal (Shape 2 Point Shown)**

## STORAGE

The Synergy Shape Back 2 Point should not be stored in extremely hot or cold temperatures.



**WARNING! Extreme temperatures can affect the temperature of your seating system components and may cause skin irritation. Use caution when your mobility product has been used or stored in an extremely hot or cold environment.**

## CARE AND MAINTENANCE

Your power chair must be disposed of according to applicable local and national statutory regulations. Contact your local waste disposal agency or Quantum Rehab Provider for information on proper disposal of power chair packaging, metal frame components, plastic components, electronics, batteries, neoprene, silicone, and polyurethane materials.

Be aware of safety issues while smoking.



**WARNING! Pride strongly recommends that you do not smoke cigarettes while seated in your seating system although the seating system has passed the necessary testing requirements for cigarette smoking. You must adhere to the following safety guidelines if you decide to smoke cigarettes while seated in your seating system.**

- **Do not leave lit cigarettes unattended.**
- **Keep ashtrays a safe distance from the seating system.**
- **Always make sure cigarettes are completely extinguished before disposal.**

All hardware on the Synergy Shape Back 2 Point should be checked monthly to ensure that it is tight.



**WARNING! Tighten any hardware immediately to prevent damage to your mobility product and personal injury to the rider or others.**

Claims and repairs should be processed through the nearest Quantum Rehab Provider.

Take your power chair to your Quantum Rehab Provider at least once a year to have a complete inspection, safety check, and for any required service. This helps ensure that your power chair is functioning properly and helps prevent future complications.

## **WARRANTY**

The Synergy Shape Back 2 Point system is designed and produced to the highest of standards. Our Synergy Shape Back 2 Point cushion is guaranteed to be free of defects in material and workmanship for a period of 24 months. The outer cover is guaranteed to be free of defects in material and workmanship for a period of 90 days. If any defect in material or workmanship is found, Pride Mobility Products will repair or replace, at our discretion, the Synergy Shape Back 2 Point cushion. This warranty does not apply to cushions abused or misused by the user and deemed such by Pride Mobility Products.

# NOTES

# NOTES

# NOTES

# **QUANTUM<sup>®</sup>** **REHAB**

A Division of Pride Mobility Products<sup>®</sup> Corp.

## **Pride Mobility Products Corporation**

182 Susquehanna Avenue

Exeter, PA 18643-2694

USA

## **Pride Mobility Products Company**

380 Vansickle Road Unit 350

St. Catharines, Ontario L2R 6P7

Canada

## **Pride Mobility Products Ltd.**

32 Wedgwood Road

Bicester, Oxon OX26 4UL

UK

## **Pride Mobility Products Australia Pty. Ltd.**

21 Healey Road

Dandenong, 3175

Victoria, Australia

## **Pride Mobility Products Italia S.r.l.**

Via del Progresso - ang. Via del Lavoro

Loc. Prato della Corte

00065-Fiano Romano (RM)

## **Pride Mobility Products Europe B.V.**

Castricummer Werf 26

1901 RW Castricum

The Netherlands

***Pride<sup>®</sup>***  
*Mobility Products Corp.*



I N F M A N U 3 8 5 4