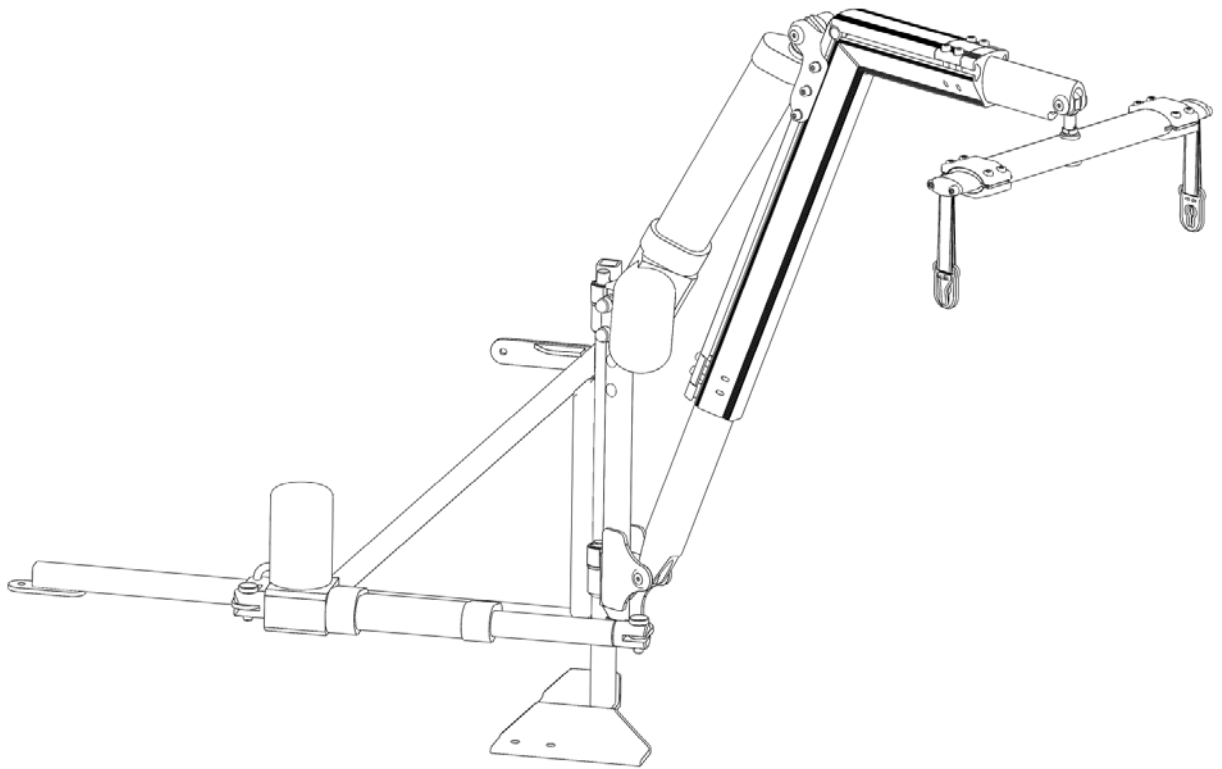


# ZEUS

260/440lb



**FITTING INSTRUCTIONS**

AFFIX BARCODE LABEL  
HERE

# SAFETY GUIDLINES



**WARNING!** An authorized Pride Provider or qualified technician must perform the initial setup of this lift and must follow all of the instructions in this manual.

The symbols below are used throughout this owner's manual and on the product to identify warnings and important information. It is very important for you to read them and understand them completely.



**WARNING!** Indicates a potentially hazardous condition/situation. Failure to follow designated procedures can cause either personal injury, component damage, or malfunction. On the product, this icon is represented as a black symbol on a yellow triangle with a black border.



**MANDATORY!** These actions should be performed as specified. Failure to perform mandatory actions can cause personal injury and/or equipment damage. On the product, this icon is represented as a white symbol on a blue dot with a white border.



**PROHIBITED!** These actions are prohibited. These actions should not be performed at any time or in any circumstances. Performing a prohibited action can cause personal injury and/or equipment damage. On the product, this icon is represented as a black symbol with a red circle and red slash.

Please fill out the following information for quick reference:

**Pride Provider:** \_\_\_\_\_

**Address:** \_\_\_\_\_

**Phone Number:** \_\_\_\_\_

**Purchase Date:** \_\_\_\_\_ **Serial Number:** \_\_\_\_\_

***NOTE:** This owner's manual is compiled from the latest specifications and product information available at the time of publication. We reserve the right to make changes as they become necessary. Any changes to our products may cause slight variations between the illustrations and explanations in this manual and the product you have purchased. The latest/current version of this manual is available on our website.*

***NOTE:** This product is compliant with WEEE, RoHS, and REACH directives and requirements.*



Copyright © 2017  
Autochair Ltd.  
1225265/Rev E/Aug 2017

**Manufactured By:**  
Autochair Ltd  
Wood Street North  
Meadowlane Ind. Est.  
Alfreton  
Derbyshire, DE55 7JR  
UK

**Distributed By:**  
Pride Mobility Product, Corp.  
182 Susquehanna Avenue  
Exeter  
PA 18643-2694  
USA

# CONTENTS

I.	INTRODUCTION .....	4
II.	SAFETY .....	5
III.	TECHNICAL .....	8
IV.	FITTING INSTRUCTIONS .....	9
V.	WIRING .....	13
VI.	INSTALLING & REMOVING .....	15
VII.	TROUBLESHOOTING .....	17
VIII.	WARRANTY .....	18

# I. INTRODUCTION

Welcome to Pride Mobility Products. Congratulations on the purchase of your new lift system. The lift system design combines the most advanced state-of-the-art components with modern, attractive styling.

At Pride, your safety is important to us. Please read and follow all instructions in this manual before operating your lift system for the first time. These instructions were produced for your benefit. Your understanding of these instructions is essential for the safe operation of your new lift system.

Pride is not liable for damage to property or personal injury arising out of the unsafe use of a lift system. Pride is also not liable for any property damage or personal injury arising out of the failure of any person and/or user to follow the instructions and recommendations set forth in this manual or any other instructions or recommendations contained in other lift system related literature issued by Pride or contained on the lift system itself.

## INTERNET AND PRIVATE PURCHASES

If you purchased your product over the Internet or from a previous owner and you have any questions about the safe use and/or maintenance of the product, please visit the Pride web page at [www.pridemobility.com](http://www.pridemobility.com) or contact your authorized Pride Provider.

## PURCHASER'S AGREEMENT

By accepting delivery of this product, you promise that you will not change, alter, or modify this product or remove or render inoperable or unsafe any guards, shields, or other safety features of this product; fail, refuse, or neglect to install any retrofit kits from time to time provided by Pride to enhance or preserve the safe use of this product.

## SHIPPING AND DELIVERY

Before using your lift, make sure your delivery is complete as some components may be individually packaged. If you do not receive a complete delivery, please contact your Pride Provider immediately. Where damage has occurred during transport, either to the packaging or content, please contact the delivery company responsible.

## INFORMATION EXCHANGE

We want to hear your questions, comments, and suggestions about this manual. We would also like to hear about the safety and reliability of your new lift system, and about the service you received from your authorized Pride Provider.

Please notify us of any change of address, so we can keep you apprised of important information about safety, new products, and new options that could improve your ability to use and enjoy your lift system. Please feel free to contact us at the address below:

### **USA:**

Pride Mobility Products Corporation  
182 Susquehanna Ave.  
Exeter, PA 18643-2694

### **Canada:**

Pride Mobility Products Company  
5096 South Service Road  
Beamsville, Ontario L0R 1B3

***NOTE: If you ever lose or misplace your copy of this manual, contact us and we will be glad to send you a new one immediately.***

# II. SAFETY

## PRODUCT SAFETY SYMBOLS

The symbols below are used on the lift system to identify warnings and mandatory or prohibited actions. It is very important for you to read and understand them completely.



Read and follow the information in the owner's manual.

Maximum lifting capacity.

Do not sit on mobility product while operating the lift system or during transport.



Pinch/Crush points created during assembly and/or operation. Keep hands/fingers away from moving components during operation.



Battery posts, terminals and related accessories contain lead and lead compounds. Wear goggles and gloves when handling batteries and wash hands after handling.



Disposal and recycling. Contact your authorized Pride Provider for information on proper disposal of your Pride product and its packaging.



## II. SAFETY

### LIFTING CAPABILITIES

The lift system is designed to lift a maximum weight of 260 lbs. (120 kg) or 440 lbs. (200kg) depending on the model purchased. Check this by referring to labels on the lift arm. Under no circumstances should the lift system be made to exceed this weight limit. Subjecting the lift system to the strain of lifting more than it is designed to may cause it to fail, resulting in damage to the mobility product and/or injury to the lift operator. Refer to the mobility product specifications for information on the overall weight of the mobility product before lifting with the lift system.



**WARNING!** Exceeding the maximum lifting capacity of 260lbs or 440lbs may cause the lift system to fail, resulting in damage to the mobility product and/or injury to the lift operator.



**MANDATORY!** Adding accessories, oversized batteries, or a different seat will increase the weight of your mobility device. Verify with your authorized Pride Provider that the total weight of your mobility device, including additions, DOES NOT exceed 260 lbs or 440 lbs. (120/200 kg).

### INSTALLATION

This hoist is intended for installation in the rear luggage compartment of a vehicle. Read and fully understand the installation instructions provided with the hoist and the related fitting kit instructions before installing the lift system.



**WARNING!** This hoist is only intended to be installed by an authorized Pride installer or qualified technician. Separate installation instructions are provided with the hoist and the installation kit. Read and fully understand both manuals prior to installation.

### LIFTING NON-PRIDE PRODUCTS

The lift system is an extremely versatile device, which users may employ to lift items other than Pride products. Pride has no control over such use, nor can Pride anticipate every possible use to which a lift system may be put. Operating the lift system outside of the safe limits as discussed in this manual or using the lift system to lift any item deemed by Pride to be incompatible with the lift system is done at the operator's own risk, and Pride accepts no liability for damage or injury resulting from such use.

### PRE-LIFT INSPECTION

There should be no sharp edges on the hoist, the fitting kit or the scooter brackets. If you find any sharp edges, please contact your supplier before use. Make sure that you are completely happy with the operation of your hoist before operating it yourself. Misuse of the product could result in injury. Inspect the lifting straps before every use for twisting, fraying or signs of wear. If signs of wear become evident, have the them replaced by your authorized Pride Provider.



**WARNING!** A frayed or worn strap can snap, resulting in damage to the mobility product and/or injury to the lift operator.

### OPERATOR POSITIONING

Keep hands clear of the lift arm while the lift system is lifting/lowering or loading in/out a mobility product. The operator of the lift should stand a safe distance from the unit being lifted/lowered to ensure that his/her feet are never positioned under a raised mobility product.

## II. SAFETY

### TRANSPORT VEHICLE POSITIONING

Be sure your vehicle is parked on flat, level ground and the emergency brake is engaged before attempting to lift a mobility product.



WARNING! Attempting to lift a mobility product when a vehicle is not on level ground will cause the mobility product to swing toward or away from the vehicle, making it difficult to get the mobility product into the vehicle.

### KEY SAFETY POINTS



WARNING! All models of the Zeus are very powerful in both the UP (lifting) and DOWN (lowering) as well as the IN (into vehicle) and OUT (out of vehicle) operation. Care should be taken that the hoist boom and the mobility product that is being lifted are free to move. The Zeus has the power to break trim and cause harm if not operated correctly.



WARNING! The hoist must never be operated by a child or any person not deemed appropriate to operate the equipment by the technician who installed it.



WARNING! The safety Pin must be fitted into the top pin in the A-Frame prior to use.



WARNING! Note the position of all pinch point warning labels stating "Keep Clear". Never place your hands in these locations when the hoist is moving.



WARNING! The hoist must never be used to lift items other than the mobility product it was originally installed and set-up to lift.



WARNING! Never use a system that has signs of damage.



WARNING! Do not exceed maximum lifting capacity.



WARNING! Misuse of the hoist may result in serious injury.

**Before lifting the mobility product for the first time, operate the hoist without a load until the controls are familiar.**

**Any adjustment to the hoist settings must only be carried out by an authorized Pride Provider.**

**Your hoist should be inspected at least every year by a qualified person.**

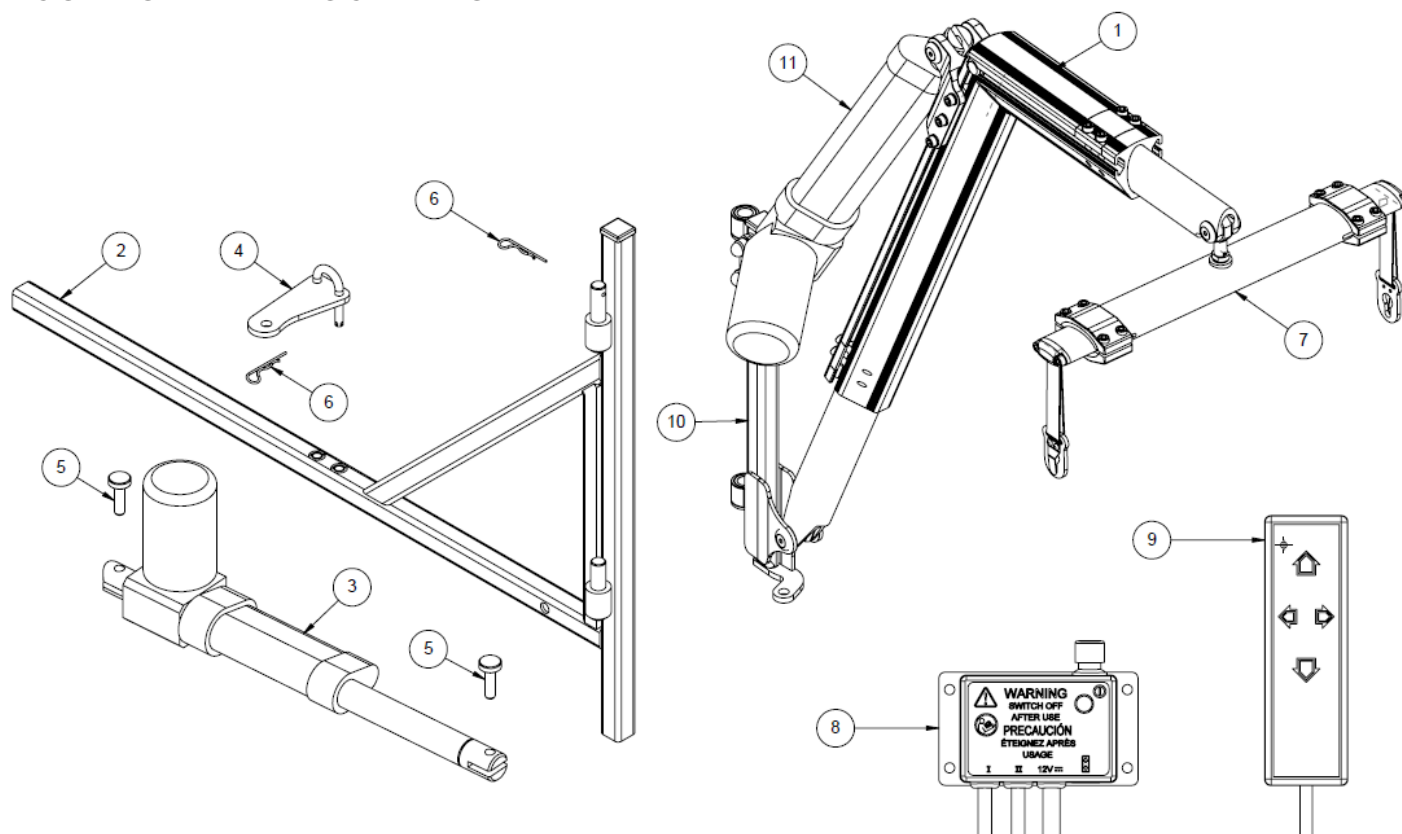
**If in doubt about any aspect of your hoist, contact an authorized Pride Provider.**

# III. TECHNICAL

## PRODUCT SPECIFICATION

Model / SWL	440 lbs (200kg)	260 lbs (120kg)
Weight of the lifting arm:	30.8lbs (14kg)	24.2lbs (11kg)
Maximum lifting capacity, SWL:	440lbs (200kg)	260lbs (120kg)
Power supply:	12V dc	
Maximum current draw:	22 Amps	
Product Materials:	Aluminum and Mild/Stainless Steels	
Material Finish:	Powder Coated Carbon	

## COMPONENT DESCRIPTION



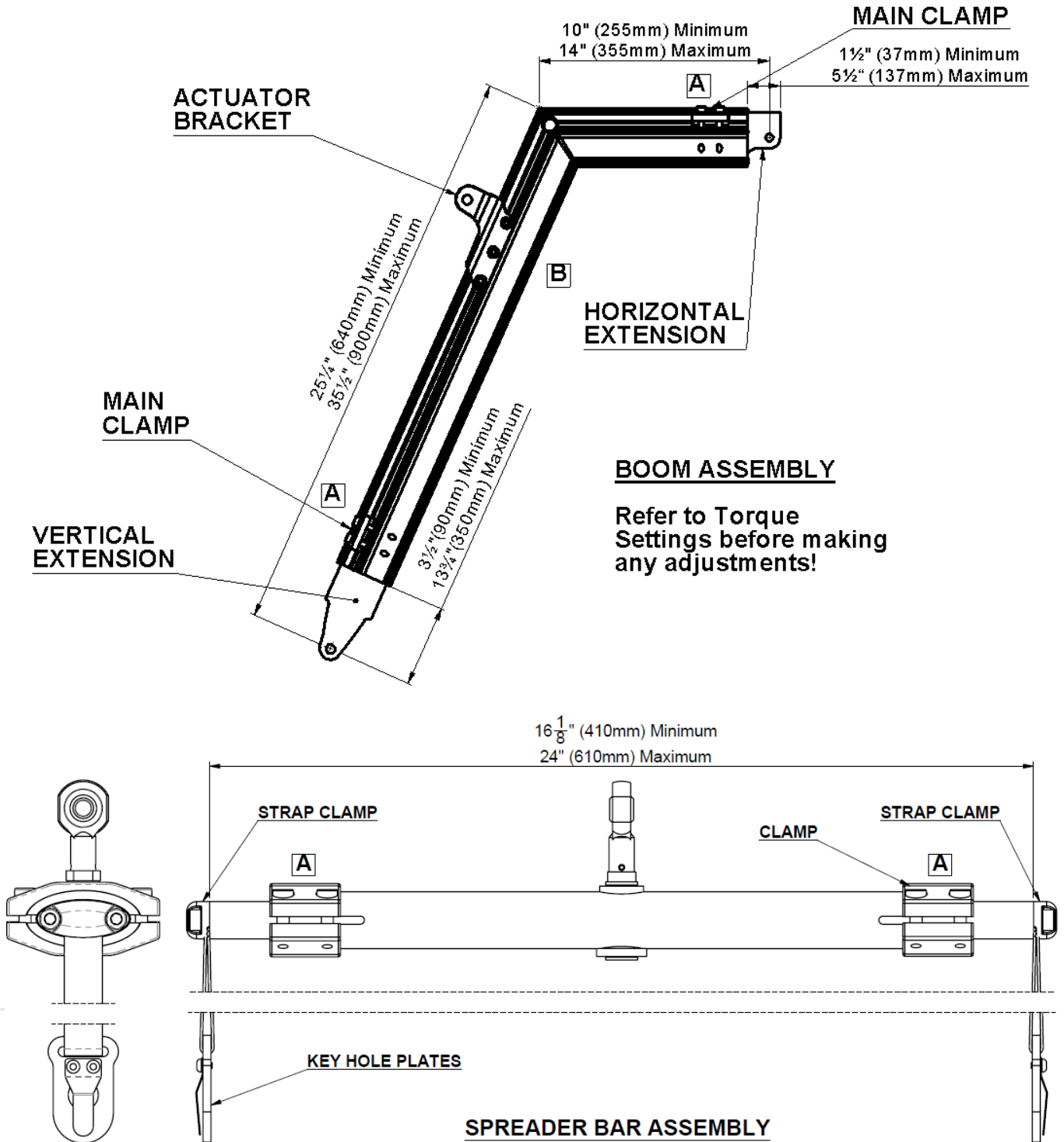
- 1 BOOM
- 2 'A' FRAME - DESIGN VARIES DEPENDING ON VEHICLE
- 3 IN / OUT ACTUATOR
- 4 IN / OUT ACTUATOR FIXING PLATE
- 5 ACTUATOR PIN
- 6 RETAINING PIN
- 7 SPREADER BAR
- 8 CONTROL BOX
- 9 HANDSET
- 10 PIVOT POST
- 11 UP/DOWN ACTUATOR



# IV. FITTING INSTRUCTIONS

The hoist is tested and set to a nominal position for the vehicle it is intended for. Adjustment may then be required to suit the vehicle. The screws are only tightened to stop movement in transport. All fixings are to be fully tightened and checked at installation.

## Description of components and Max./Min. settings;



# IV. FITTING INSTRUCTIONS

## Setting the Boom (Vertical Extension)

1. The hoist will be provided assembled and set to a nominal boom size suitable for the vehicle. If a more optimal boom setting is required the following procedure can be used.
2. The actuator supplied will be labelled with the maximum weight setting. Refer to the charts, provided above, for the allowable settings for the different stroke actuators. No boom length should be set greater than 35 ½" (900mm).
3. Do not set a 440lb (200kg) hoist below 27.95" (710mm) boom length.
4. **Before starting, ensure the actuator is fully retracted.**
5. If the chart shows that a different lower actuator bracket position is required on the pivot post, this should be changed first.
6. Fit the Boom Assembly, with the actuator and pivot post, to the A-Frame fitted in the vehicle.
7. Loosen the vertical extension main clamp and the actuator bracket while supporting the horizontal boom.
8. Extend the boom to the desired length to suit the boot opening. Do not exceed the maximum extension.
9. While holding the horizontal boom **horizontal** (parallel to the vehicle floor), tighten the vertical extension main clamp and actuator bracket, by hand initially, to hold the hoist in position while the settings are checked. (Do not load the hoist at this stage).
10. Once satisfied that the hoist moves through its intended movements without fouling the boot opening, tighten the main clamps and the actuator brackets to the specified torque settings.

## Setting the Horizontal Extension

1. The horizontal extension provides two functions; it is principally adjusted to suit the width of the spreader bar, ensuring the spreader bar can rotate without hitting the boom. It can also be increased to give more drop when the boom is lowered.
2. With the spreader bar set to the desired width check the rotation of the bar.
3. If necessary, loosen the horizontal extension main clamp and adjust the length of the horizontal extension.
4. Do not set beyond the limits shown in the diagrams.
5. Once satisfied that the position is correct, tighten the main clamps to the specified torque settings.

## Setting the Spreader Bar

1. Loosen the clamps on the spreader bar extensions and adjust to the width of the scooter seat or the required width for the power chair.
2. Do not exceed the limits shown in the diagram and also make sure the arms are extended equal lengths to maintain balance of the load across the pivot.
3. Loosen the strap clamps and extend the straps to the desired length.
4. Ensure that the straps are of equal length to keep the spreader bar level during lifting.
5. Once satisfied that the positions are correct, tighten the main clamps and the actuator brackets to the specified torque settings.

# IV. FITTING INSTRUCTIONS

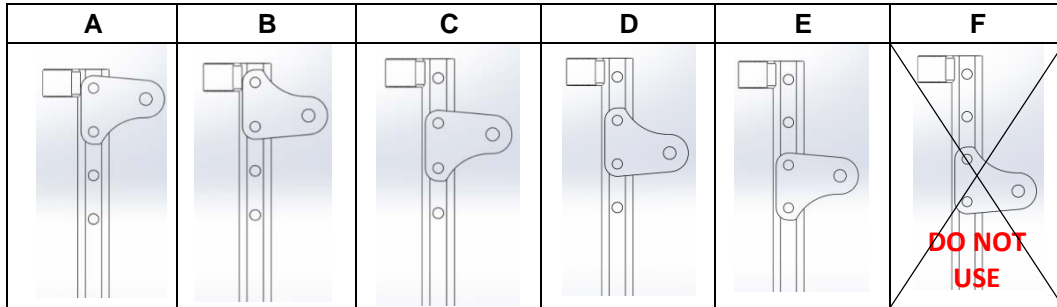
The limits of the adjustments are shown on the previous diagrams.

The maximum settings must not be exceeded.

When correctly set, the top part of the hoist must be parallel with the vehicle floor, when the actuator is fully retracted.

## Pivot Post Bracket Positions

The following table shows the lower actuator bracket positions and the reference used in the actuator setting chart;



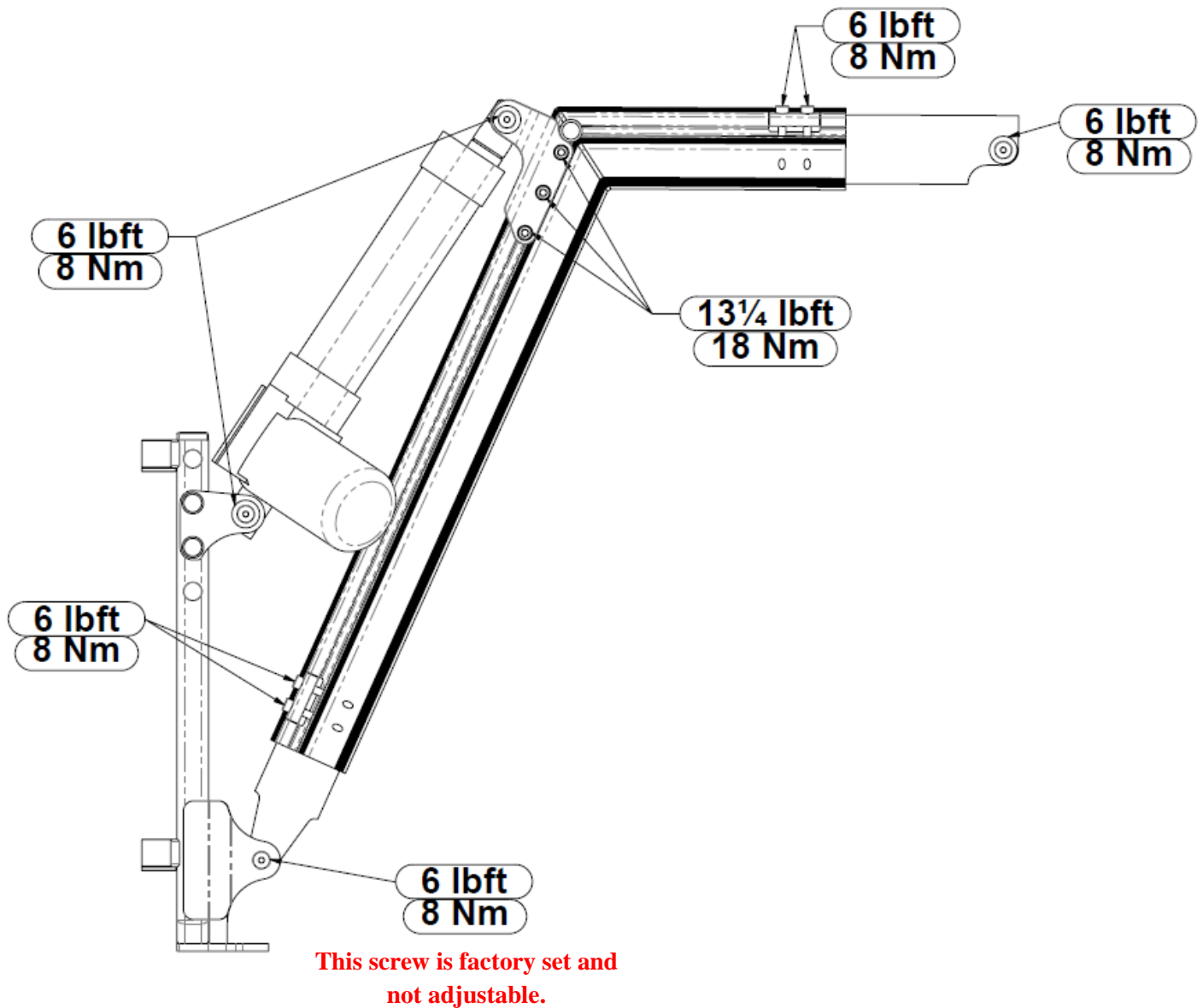
The following table shows the lower actuator bracket positions recommended for various actuators and loads;

	Model		260lb		440lb
	Actuator Stroke		10"	12"	10"
	Inch	mm	250mm	300mm	250mm
BOOM LENGTH	35.43	900	A	A	A
	35.04	890			
	34.65	880	A	B	B
	34.25	870			
	33.86	860	A	C	C
	33.46	850			
	33.07	840	B	D	D
	32.68	830			
	32.28	820	C	E	E
	31.89	810			
	31.50	800	D	DO NOT USE	DO NOT USE
	31.10	790			
	30.71	780	E	DO NOT USE	DO NOT USE
	30.31	770			
	29.92	760	DO NOT USE	DO NOT USE	DO NOT USE
	29.53	750			
	29.13	740	DO NOT USE	DO NOT USE	DO NOT USE
	28.74	730			
	28.35	720	DO NOT USE	DO NOT USE	DO NOT USE
	27.95	710			
27.56	700	DO NOT USE	DO NOT USE	DO NOT USE	
27.17	690				
26.77	680	DO NOT USE	DO NOT USE	DO NOT USE	
26.38	670				
25.98	660	DO NOT USE	DO NOT USE	DO NOT USE	
25.59	650				
25.20	640	DO NOT USE	DO NOT USE	DO NOT USE	

Recommended positions  
 Additional adjustment zones  
 DO NOT USE

# IV. FITTING INSTRUCTIONS

## TORQUE SETTINGS



**NOTE: Only use the screws supplied as these have pre-applied thread locking compound.**

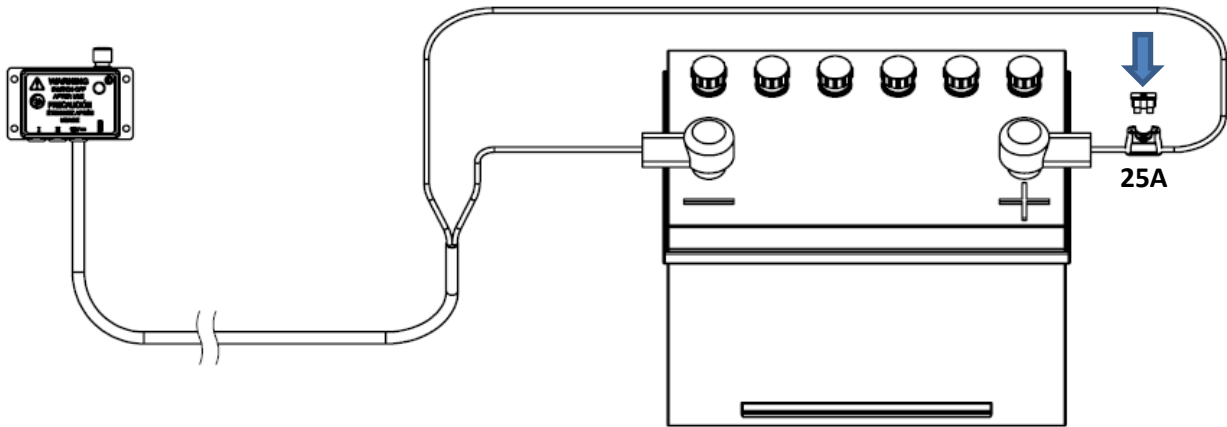
When tightening the screws, the screws should be tightened slowly and evenly until the desired torque setting is reached.

Do not tighten each screw, from loose, to the full torque setting *before* tightening the next, the brackets clamps will be unevenly loaded and may not clamp fully.

After reaching the torque setting, repeat the tightening sequence checking that all screws are at the desired torque setting.

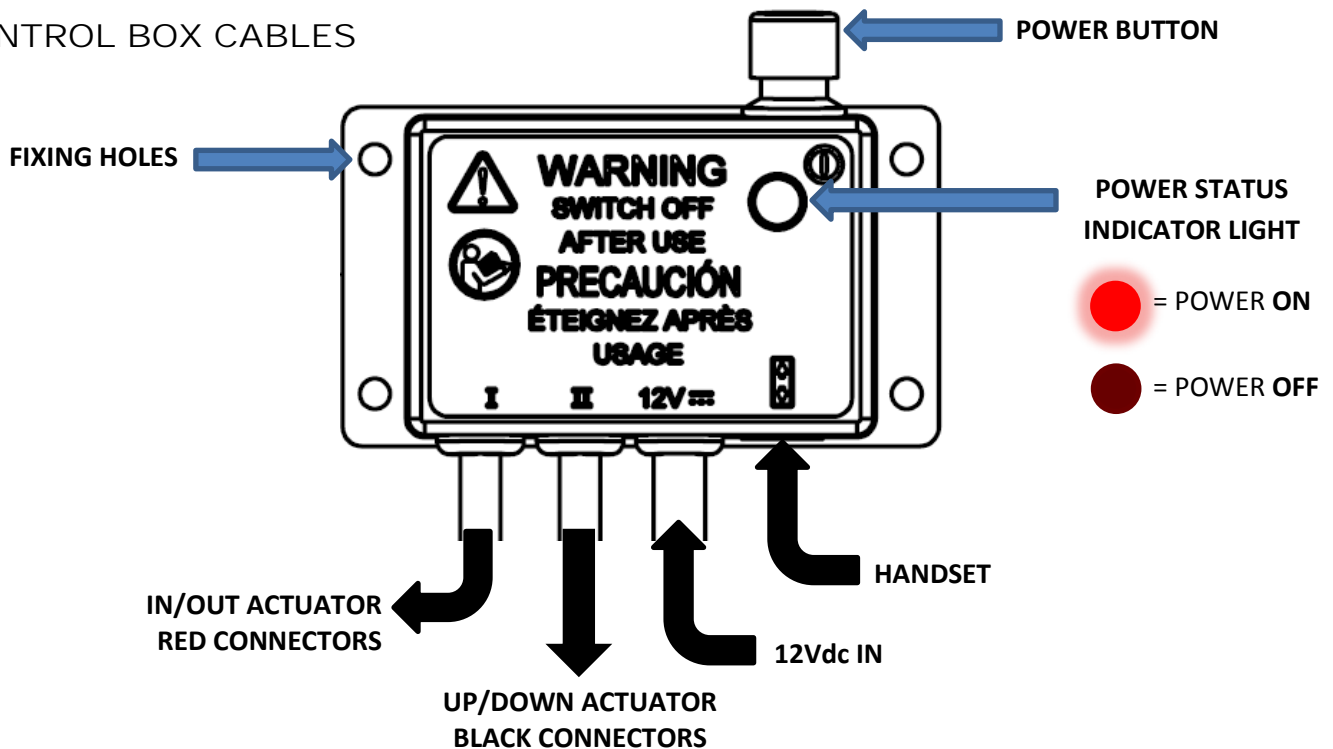
# V. WIRING

## HARD WIRING THE CONTROL BOX



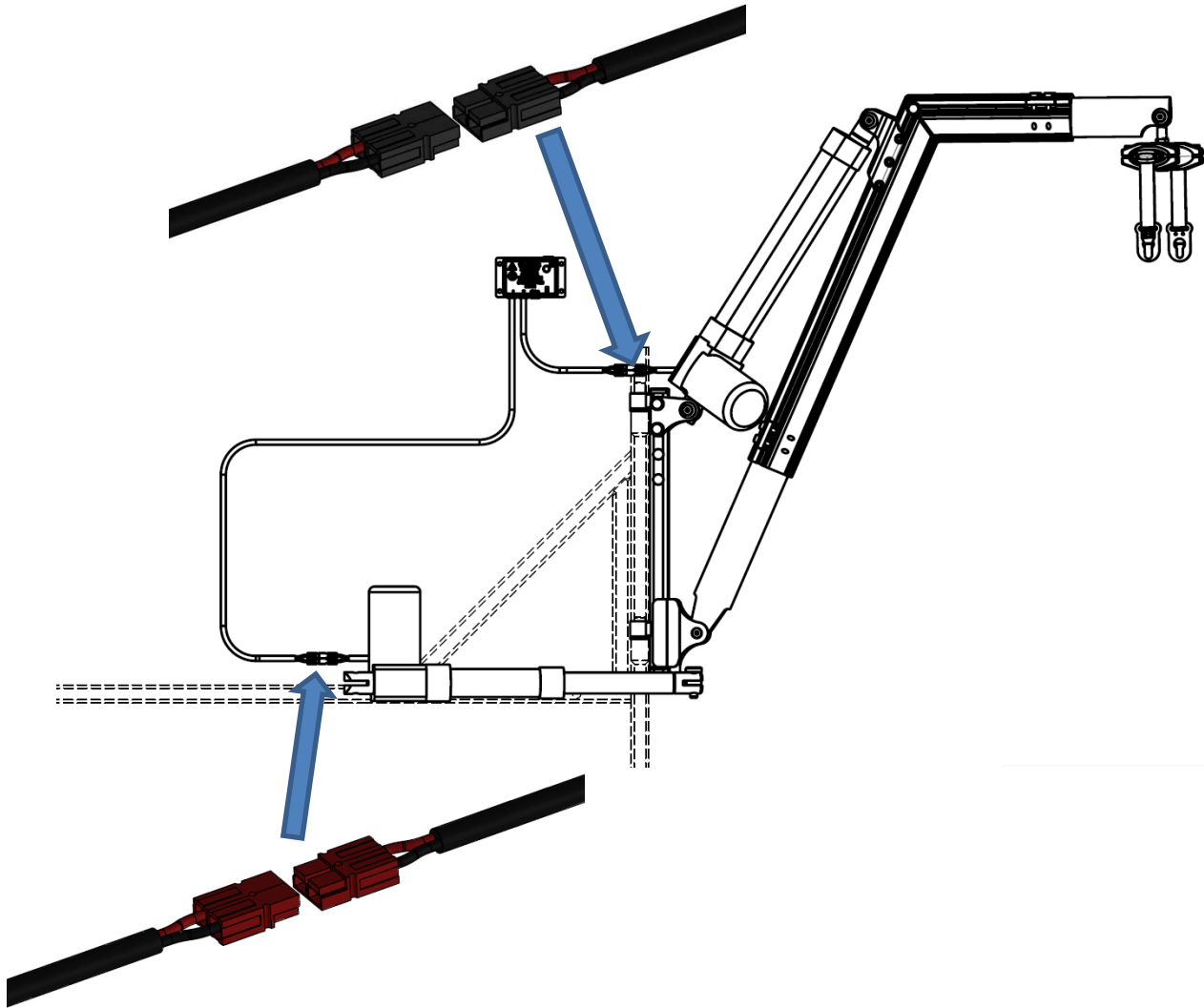
- The wiring supplied for connecting the battery and power socket is twin core with red and black insulation.
- Run the cable down the brace bar and through the bulkhead (use the grommet supplied if required) to the vehicle battery. Secure the cable where required using the cable ties provided.
- Connect **both** wires to the battery. Use the inline fuse holder provided on the positive connection. Wire as follows BLACK = negative / RED = positive. A spare 25 AMP fuse is provided and should be handed to the customer or located in an obvious and appropriate position.
- **DO NOT** use a painted surface to achieve an earth. This could lead to intermittent operation of the hoist.
- Securely fix the control box in a position which is easily accessible when the vehicle is both loaded and unloaded.

## CONTROL BOX CABLES



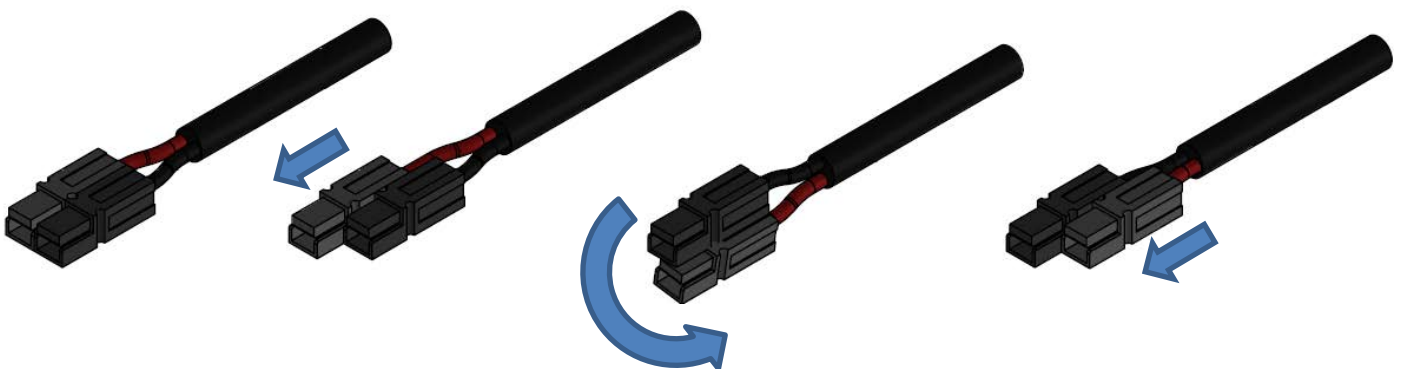
# V. WIRING

## CONNECTING ACTUATORS



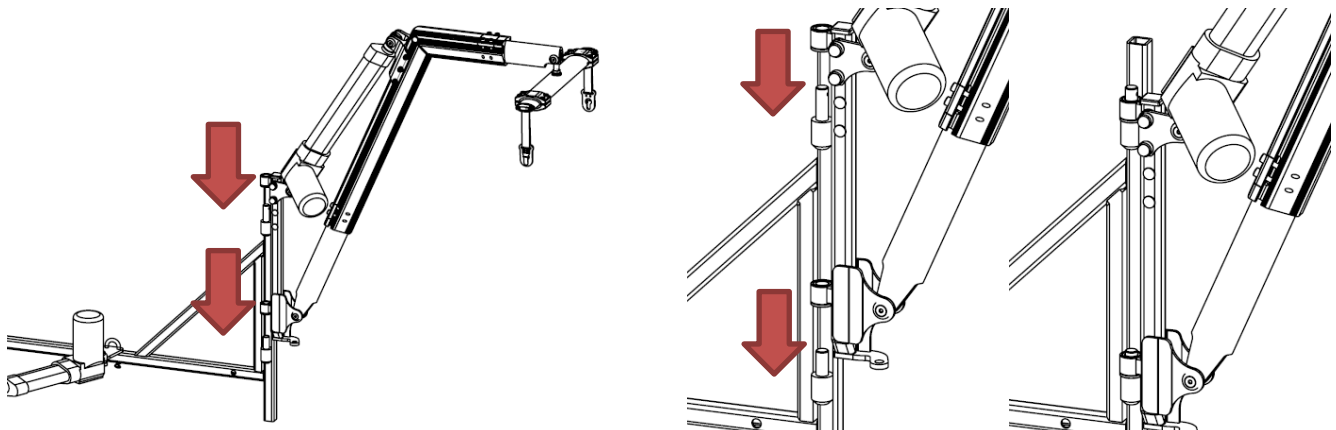
**Test operation with handset. If the movement is opposite to expected then reverse the polarity of the connector/s.**

## REVERSING POLARITY

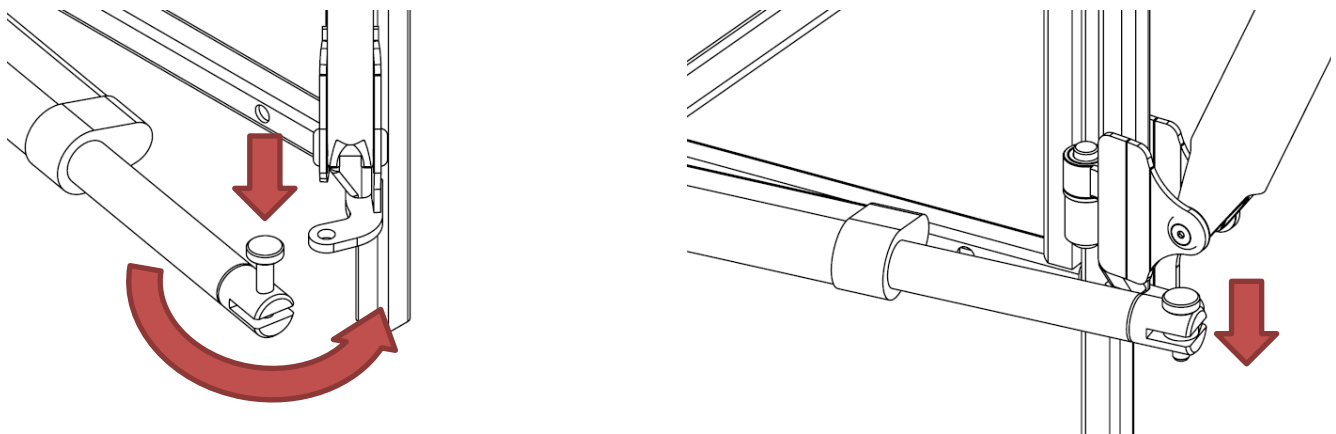


# VI. INSTALLING AND REMOVING

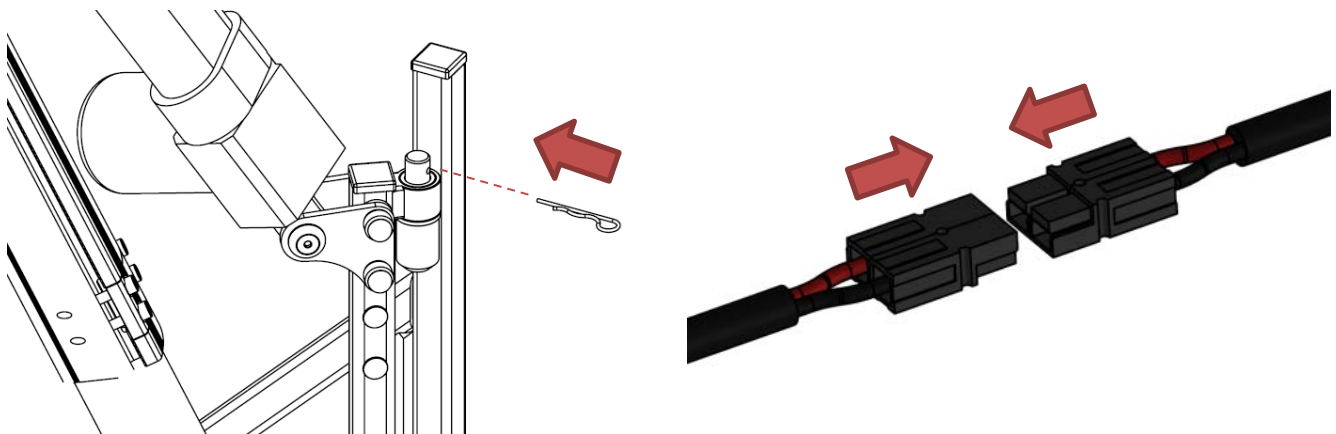
## INSTALLING



1. Rest the upper mounting lug onto the longer upper pin before aligning the lower pin. The hoist should slide smoothly down into place.



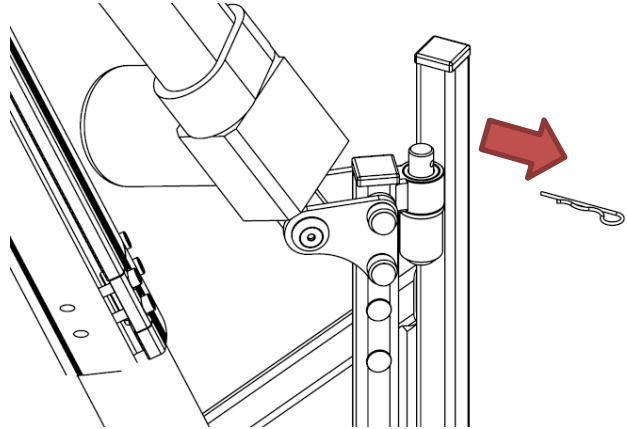
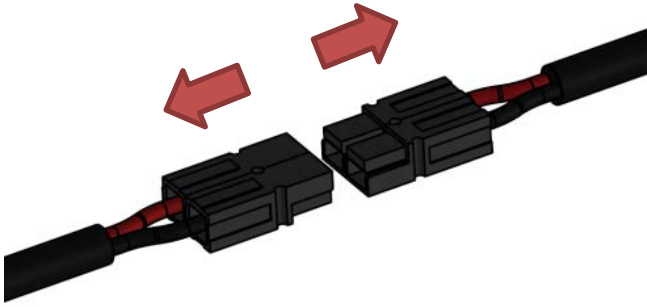
2. Half engage actuator pin
3. Rotate the hoist and align with it actuator
4. Fasten together with the actuator pin – Ensure the pin is fully engaged



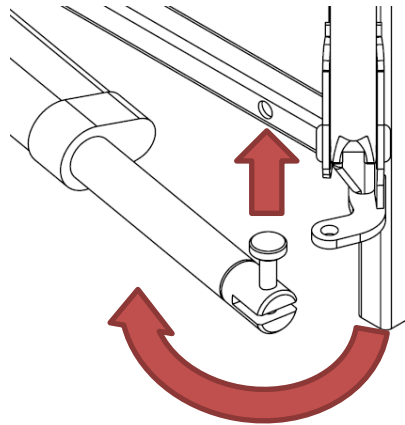
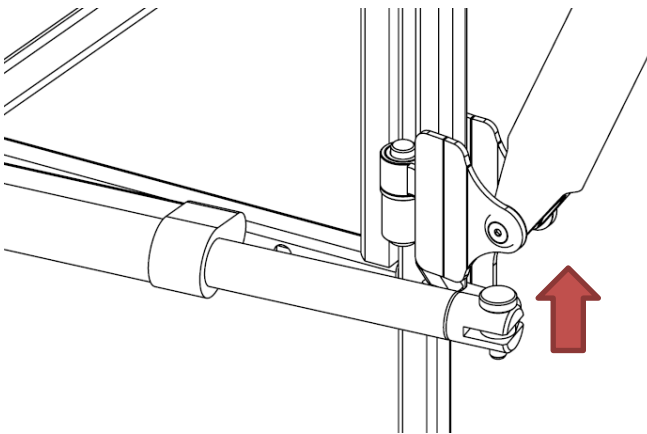
5. Fully insert the Retaining Clip into the top pin
6. Clip the power connectors securely together

# VI. INSTALLING AND REMOVING

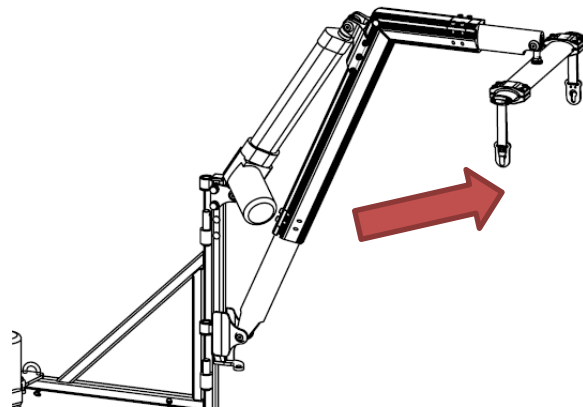
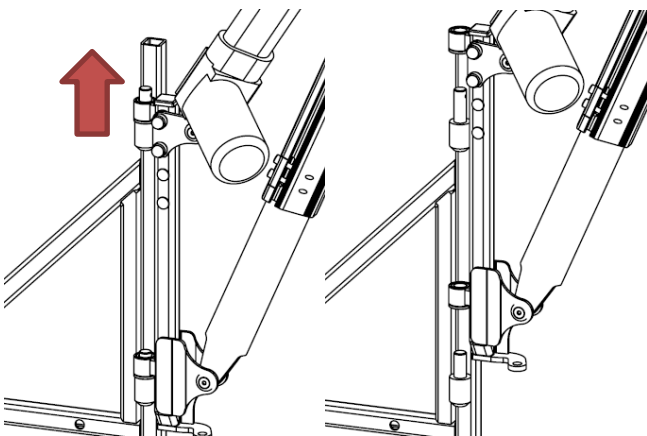
## REMOVING



1. Ensure the system power is OFF
2. Unclip the power connectors
3. Remove retaining clip



4. Partially remove the actuator pin
5. Rotate the actuator away from the hoist
6. Remove actuator pin



7. Slide hoist upwards to remove
8. Store the hoist in a safe location



# VII. TROUBLESHOOTING

## TROUBLESHOOTING & FREQUENTLY ASKED QUESTIONS

PROBLEM	SUGGESTIONS
Nothing works	<ul style="list-style-type: none"> <li>• Make sure that the hoist is switched on.</li> <li>• Turn the hoist off and back on again and retry.</li> <li>• Check the fuse. This is next to the car's battery, a spare fuse is always supplied.</li> <li>• Does the car have a flat battery (try to start it)</li> </ul>
Handset doesn't work	<ul style="list-style-type: none"> <li>• Check cable connection into control box</li> <li>• Check cable connection into handset</li> </ul>
Turns on but won't lift	<ul style="list-style-type: none"> <li>• Has the actuator become disconnected from the power supply?</li> <li>• Check the electrical plugs between 'UP/DOWN' actuator and power supply, reconnect if they have come apart</li> </ul>
Turns on but won't power in	<ul style="list-style-type: none"> <li>• Has the actuator become disconnected from the power supply?</li> <li>• Check the electrical plugs between 'IN/OUT' actuator and power supply, reconnect if they have come apart</li> </ul>
Stops during lifting	<ul style="list-style-type: none"> <li>• Is the scooter/wheelchair caught on the vehicle?</li> <li>• Is the load of more than the hoist's capacity? Please check this weight with your supplier.</li> <li>• Check the fuse. This is next to the car's battery, a spare fuse is always supplied.</li> </ul>
The actuator makes a loud clicking noise	<ul style="list-style-type: none"> <li>• The stronger actuator required for 440lbs lifts uses a clutch for overload protection. If the noise only occurs at the top or bottom of the lift, this is perfectly normal. If it occurs part way through the lift the unit is overloaded. Check the scooter/chair is not caught against anything.</li> </ul>
Hoist is lifting very slowly	<ul style="list-style-type: none"> <li>• Is the scooter too heavy for the lift?</li> <li>• 440lbs (200kg) is the maximum safe working load. (See page 8)</li> <li>• If the hoist is extended refer to the technical section to check the settings do not exceed the recommended limits.</li> <li>• Is the vehicle's battery charged?</li> </ul>
What about servicing?	<ul style="list-style-type: none"> <li>• We recommend yearly service to ensure safety, reliability and performance of your hoist.</li> </ul>
What if we have an accident?	<ul style="list-style-type: none"> <li>• If you think that your hoist has been damaged for any reason, please call your authorized Pride Provider for inspection and testing before use.</li> </ul>

# VIII. WARRANTY

The warranty period for your hoist is 12 months from the date of delivery.

This warranty **will cover** any **defects of workmanship or function**.

The warranty **does not cover** any incorrectly installed hoist's or one with damaged mechanical or electrical components due to **incorrect use or damage**.

The warranty does not cover consequential loss, unless regional law requires it.

The warranty is invalidated if the seal on either the actuator or control box is broken. These contain no user replaceable components. No alteration should be made to the hoist by anyone other than a qualified person, as defined by an authorized Pride Provider.

In the event of damage or defects in the actuator, the hoist should be returned to your authorized Pride Provider for evaluation.

No wires must be cut as they are fitted with connectors that must be correctly removed before repair.

In the event of any malfunction of the electrical circuit box or handset which require replacement, they should be removed and returned as a set.

**Please keep a note of the following:**

Serial Number: \_\_\_\_\_

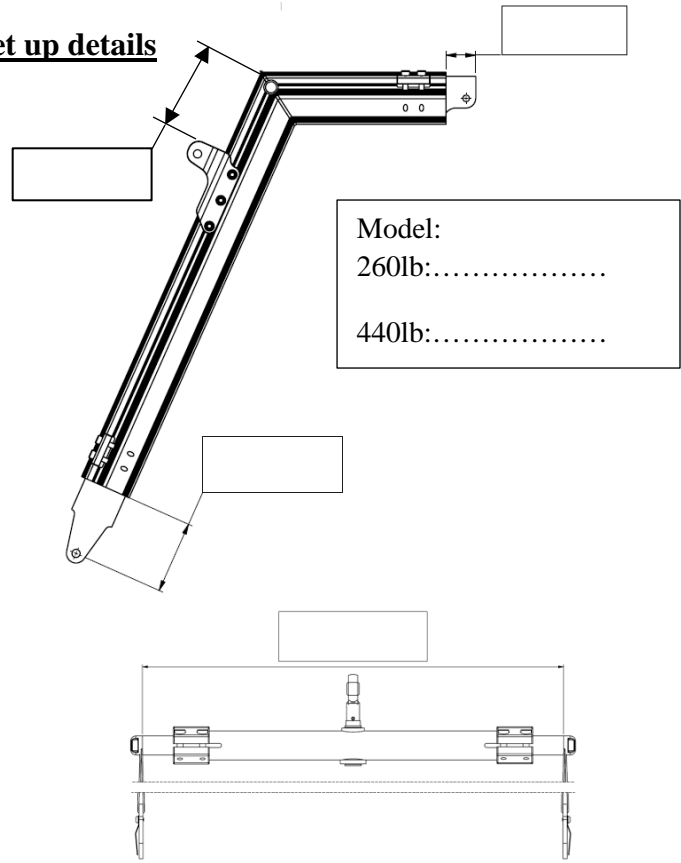
Date Supplied: \_\_\_\_\_

Details of the Supplier (Stamp): \_\_\_\_\_

Zip Code: \_\_\_\_\_

Tel: \_\_\_\_\_

**Set up details**



A	B	C	D	E

Scooter/Chair Weight: \_\_\_\_\_

Signed: \_\_\_\_\_

If this changes, please check with your authorized Pride Provider





***Pride® Lifts & Ramps***