

# Revo Sport

## Owner's Manual

**ATTENTION:**  
Please read the content  
of your owner's manual  
before operating your  
scooter.



*The Ultimate In Style & Performance<sup>®</sup>*

**Pride**  
Mobility Products Corp.

*Exeter, PA  
St. Catharines, ON*

*1-800-800-8586*

*[www.pridemobility.com](http://www.pridemobility.com)*

# SAFETY GUIDELINES

Please read and follow all instructions in this owner's manual before attempting to operate your scooter for the first time. If there is anything in this manual you do not understand, or if you require additional assistance for set-up, contact your authorized Pride provider.

Using your Pride product safely depends upon your diligence in following the warnings, cautions, and instructions in this owner's manual. Using your Pride product safely also depends upon your own good judgement and/or common sense, as well as that of your provider, caregiver, and/or healthcare professional. Pride is not responsible for injuries and/or damage resulting from any person's failure to follow the warnings, cautions, and instructions in this owner's manual. Pride is not responsible for injuries and/or damage resulting from any person's failure to exercise good judgement and/or common sense.

The symbols below are used throughout this owner's manual to identify warnings and cautions. It is very important for you to read and understand them completely.



**WARNING!** Failure to heed the warnings in this owner's manual may result in personal injury.



**CAUTION!** Failure to heed the cautions in this owner's manual may result in damage to your scooter.

# CONTENTS

<b>I. INTRODUCTION</b> .....	4
<b>II. SAFETY</b> .....	6
<b>III. EMI/RFI</b> .....	15
<b>IV. SPECIFICATIONS</b> .....	17
<b>V. YOUR REVO SPORT</b> .....	19
<b>VI. BATTERIES AND CHARGING</b> .....	23
<b>VII. OPERATION</b> .....	27
<b>VIII. COMFORT ADJUSTMENTS</b> .....	29
<b>IX. DISASSEMBLY AND ASSEMBLY</b> .....	31
<b>X. OPTIONAL ACCESSORIES</b> .....	33
<b>XI. BASIC TROUBLESHOOTING</b> .....	34
<b>XII. CARE AND MAINTENANCE</b> .....	35
<b>XIII. WARRANTY</b> .....	37

# I. INTRODUCTION

Welcome to Pride Mobility Products Corporation (Pride). Congratulations on the purchase of your new Pride Scooter. Your scooter design combines the most advanced state-of-the-art components with modern, attractive styling. We are certain that the design features and trouble-free operation will add convenience to your daily living and ensure complete satisfaction.

At Pride, your safety is important to us. **Please read and follow all of the instructions in this manual before you attempt to operate your scooter for the first time.** These instructions were produced for your benefit. Your understanding of these instructions is essential for the safe operation of your new Pride Scooter.

Pride is not liable for damage to property or personal injury arising out of the unsafe use of a Pride Scooter. Pride is also not liable for any property damage or personal injury arising out of the failure of any person and/or user to follow the instructions and recommendations set forth in this manual or any other instructions or recommendations contained in other scooter related literature issued by Pride or contained on the Pride Scooter itself.

This owner's manual is compiled from the latest specifications and product information available at the time of publication. We reserve the right to make changes as they become necessary. Any changes to our products may cause slight variations between the illustrations and explanations in this manual and the product you have purchased.

If you experience any problems with your scooter that you are not able to solve, or if you do not feel capable of safely following any of the instructions and/or recommendations contained in this manual, please contact your authorized Pride provider for assistance.

Once you understand how to operate and take care of your scooter, we are certain that it will give you years of trouble-free service and enjoyment.

## Information Exchange

We want to hear your questions, comments, and suggestions regarding this manual. We would also like to hear about the safety and reliability of your new Pride Scooter, and the service you received from your authorized Pride provider.

Please notify us of any change of address so we can keep you apprised of important information regarding safety, new products, and new options that can increase your ability to use and enjoy your Pride Scooter. Please feel free to write us at the address below:

Pride Mobility Products Corporation  
Attn: Customer Care Department  
182 Susquehanna Avenue  
Exeter, PA 18643-2694

# I. INTRODUCTION

## **Pride Owners Club**

As a Pride product owner, you are invited to register your product's warranty and enroll in the Pride Owners Club. You may do so by filling out and returning your enclosed registration card or by visiting Pride's web site at [www.pridemobility.com](http://www.pridemobility.com). As a registered member, each time you visit our site you will have access to the most interactive and honest educational venue available today for people with mobility needs, their families, and friends.

From our home page, click on the button that reads "Owners Club" to enter a page dedicated to current and potential Pride product owners. You will gain access to interviews, stories, recreation ideas, daily living tips, product and funding information, and interactive message boards. Message boards invite you to speak with other Pride customers as well as Pride representatives who are available to assist you with any questions or concerns you may have. You will receive a free gift simply for registering with the Pride Owners Club.

## **My Authorized Pride Provider Is:**

Name: \_\_\_\_\_

Address: \_\_\_\_\_

Phone Number: \_\_\_\_\_

## **Quick Reference Information:**

Scooter Model: \_\_\_\_\_

Serial Number: \_\_\_\_\_

Purchase Date: \_\_\_\_\_

*NOTE: If you ever lose or misplace your warranty card or this owner's manual, write or e-mail us and we will be glad to send you a new one immediately.*

## II. SAFETY

### GENERAL



**WARNING! Do not operate your new scooter for the first time without completely reading and understanding this owner's manual.**

Your Revo Sport is a state-of-the-art life-enhancement device designed to increase mobility. Pride provides an extensive variety of products to best fit the individual needs of the scooter user. Please be aware that the final selection and purchasing decision regarding the type of scooter to be used is the responsibility of the scooter user who is capable of making such a decision and his/her healthcare professional (i.e., medical doctor, physical therapist, etc.).

The contents of this manual are based on the expectation that a mobility device expert has properly fitted the scooter to the user and has assisted the prescribing healthcare professional and/or the authorized Pride provider in the instruction process for the use of the product.

There are certain situations, including some medical conditions, where the scooter user will need to practice operating the scooter in the presence of a trained attendant. A trained attendant can be defined as a family member or care professional specially trained in assisting a scooter user in various daily living activities.

As you begin using your scooter during daily activities, you will probably encounter situations in which you will need some practice. Simply take your time and you will soon be in full and confident control as you maneuver through doorways, on and off elevators, up and down ramps, and over moderate terrain.

Below are some precautions, tips, and other safety considerations that will help the user become accustomed to operating the Revo Sport safely.

### MODIFICATIONS

Pride has designed and engineered your Revo Sport to provide maximum mobility and utility. A wide range of accessories is available from your Pride provider to further customize your scooter to better suit your needs and/or preferences. However, under no circumstances should you modify, add, remove, or disable any feature, part, or function of your Revo Sport.



**WARNING! Do not modify your Revo Sport in any way not authorized by Pride. Unauthorized modifications may result in personal injury and/or damage to your Revo Sport.**

# II. SAFETY

## PRE-RIDE SAFETY CHECK

Get to know the feel of your Revo Sport and its capabilities. Pride recommends that you perform a safety check before each use to make sure your scooter operates smoothly and safely. For details on how to perform these necessary inspections, see XII. "Care and Maintenance."

Perform the following inspections prior to using your Revo Sport:

- Check all electrical connections. Make sure they are tight and not corroded.
- Check all controller connections to the utility tray. Make sure they are secured properly.
- Check the brakes.
- Check battery charge.



**WARNING! Do not carry passengers on your Revo Sport. Carrying passengers on your Revo Sport may result in personal injury and/or property damage.**

If you discover a problem, contact your authorized Pride provider for assistance.

## WEIGHT LIMITATIONS

Your Revo Sport is rated for a 250-lb. maximum weight limit.



**WARNING! Exceeding the weight limit voids your warranty and may result in personal injury and damage to your Revo Sport. Pride will not be held responsible for injuries and/or property damage resulting from failure to observe weight limitations.**

## INCLINE INFORMATION

More and more buildings have ramps with specified degrees of inclination, designed for easy and safe access. Some ramps may have turning switchbacks (180-degree turns) that require you to have good cornering skills on your Revo Sport.

- Proceed with extreme caution as you approach the downgrade of a ramp or other incline.
- Take wide swings with your Revo Sport's front wheel around any tight corners. If you do that, the Revo Sport's rear wheels will follow a wide arc, not cut the corner short, and not bump into or get hung up on any railing corners.
- When driving down a ramp, keep the Revo Sport's speed adjustment set to the slowest speed setting to ensure a safely controlled descent. See V. "Your Revo Sport."
- Avoid sudden stops and starts.

## II. SAFETY

When climbing an incline, try to keep your scooter moving. If you must stop, start up again slowly, and then accelerate cautiously. When driving down an incline, do so by setting the speed adjustment dial to the slowest setting and driving in the forward direction only. If your scooter starts to move down the incline faster than you anticipated or desired, allow it to come to a complete stop by releasing the throttle control lever. Then push the throttle control lever forward slightly to ensure a safely controlled descent.

**WARNING! When climbing an incline, do not zigzag or drive at an angle up the face of the incline. Drive your scooter straight up the incline. This greatly reduces the possibility of a tip or a fall. Always exercise extreme caution when negotiating an incline.**



**WARNING! You should not travel up or down a potentially hazardous incline (i.e., areas covered with snow, ice, cut grass, or wet leaves).**

**WARNING! When on any sort of an incline or decline, never place the scooter in freewheel mode while seated on it or standing next to it.**

Other inclines may be natural or, if man-made, not designed specifically for scooters. Figures 1 and 1A illustrate your Revo Sport's stability and its ability to climb grades under various weight loads and under controlled testing conditions.

These tests were conducted with the Revo Sport's seat in the highest position and adjusted backward on the seat base to its farthest rearward position. Use this information as a guideline. Your Revo Sport's ability to travel up inclines is affected by your weight, your scooter's speed, your angle of approach to the incline, and your scooter setup.

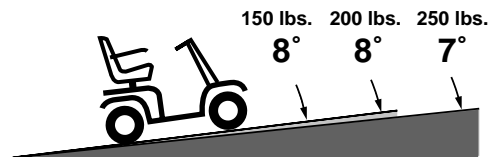


FIGURE 1. MAXIMUM RECOMMENDED INCLINE ANGLE FOR THE REVO SPORT

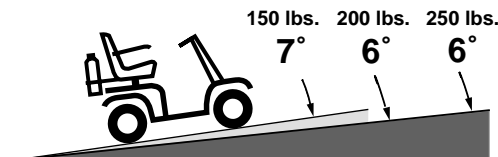


FIGURE 1A. MAXIMUM RECOMMENDED INCLINE ANGLE FOR THE REVO SPORT WITH REAR BASKET OR OXYGEN TANK



**WARNING! Any attempt to climb or descend slopes steeper than those shown in figures 1 and 1A may put your Revo Sport in an unstable position and cause it to tip, resulting in personal injury.**



**WARNING! Never use an oxygen tank weighing more than 13 lbs. Never fill the rear basket with contents exceeding 15 lbs.**



## II. SAFETY

When you approach an incline, it is best to lean forward. See figures 2 and 2A. This shifts the center of gravity of you and your Revo Sport toward the front of the scooter for improved stability.



**WARNING! Do not exceed recommended inclines, weight limits, or any specifications presented in this manual.**



FIGURE 2. NORMAL DRIVING POSITION

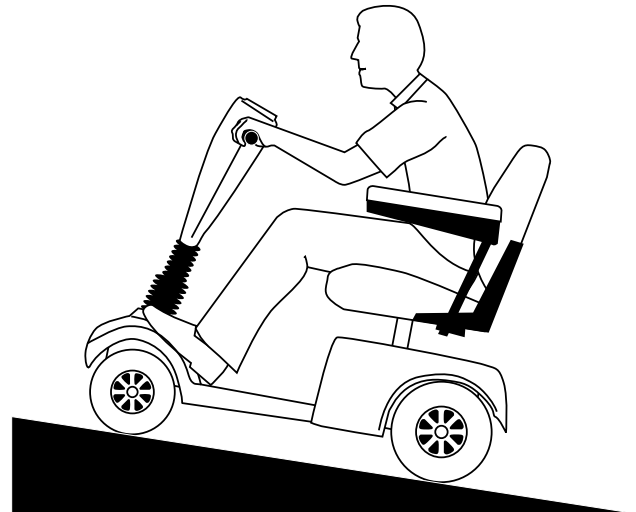


FIGURE 2A. INCREASED STABILITY DRIVING POSITION

### CORNERING INFORMATION

Excessively high cornering speeds can create the possibility of tipping. Factors which affect the possibility of tipping include, but are not limited to, cornering speed, steering angle (how sharply you are turning), uneven road surfaces, inclined road surfaces, riding from an area of low traction to an area of high traction (such as passing from a grassy area to a paved area – especially at high speed while turning), and abrupt directional changes. High cornering speeds are not recommended. If you feel that you may tip over in a corner, reduce your speed and steering angle (i.e., lessen the sharpness of the turn) to prevent your scooter from tipping.



**WARNING! When cornering sharply, reduce your speed. When using your scooter at higher speeds, do not corner sharply. This greatly reduces the possibility of a tip or fall. To avoid personal injury or property damage, always exercise common sense when cornering.**

**WARNING! Reduce speed when operating in close quarters and/or on uneven ground.**

## II. SAFETY

### BRAKING INFORMATION

Your scooter is equipped with two powerful brake systems:

1. Regenerative: Uses electricity to rapidly slow the vehicle when the throttle control lever returns to the center/stop position; and
2. Disc Park Brake: Activates mechanically after regenerative braking slows the vehicle to near stop, or when power is removed from the system for any reason.

### OUTDOOR DRIVING SURFACES

Your scooter is designed to provide optimum stability under normal driving conditions—dry, level surfaces composed of concrete, blacktop, or asphalt. However, Pride recognizes that there will be times when you will encounter other surface types. For this reason, your scooter is designed to perform admirably on packed soil, grass, and gravel. Feel free to use your scooter safely on lawns and in park areas.

- Reduce your scooter's speed when driving on uneven terrain and/or soft surfaces.
- Avoid tall grass that can become tangled in the running gear.
- Avoid loosely packed gravel and sand.
- If you feel unsure about a driving surface, avoid that surface.

### STATIONARY OBSTACLES (STEPS, CURBS, ETC.)

**WARNING! Do not drive near raised surfaces, unprotected ledges, and/or drop-offs (curbs, porches, stairs, etc.).**

**WARNING! Do not attempt to have your scooter climb or descend an obstacle that is inordinately high. Serious personal injury and/or damage may result.**



**WARNING! Do not attempt to have your scooter proceed backward down any step, curb, or other obstacle. This may cause the scooter to tip and cause personal injury.**

**WARNING! Be sure your scooter is traveling perpendicular to any curb you may be required to ascend or descend. See figures 3 and 3A.**

**WARNING! Do not attempt to negotiate a curb that has a height greater than two inches.**

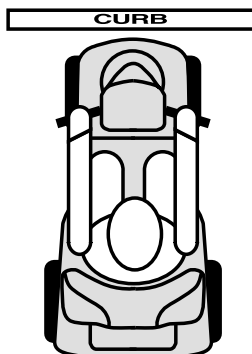


FIGURE 3. CORRECT CURB APPROACH

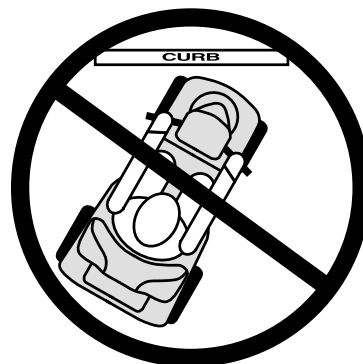


FIGURE 3A. INCORRECT CURB APPROACH

# II. SAFETY

## STREETS AND ROADWAYS



**WARNING! You should not operate your scooter on public streets and roadways. Be aware that it may be difficult for traffic to see you when you are seated on your scooter. Obey all local pedestrian traffic rules. Wait until your path is clear of traffic, and then proceed with extreme caution.**

*NOTE: Safety accessories like reflectors, fluorescent flags, and various lighting packages are available to order from your authorized Pride provider.*

## INCLEMENT WEATHER PRECAUTIONS



**WARNING! Pride recommends that you do not operate your scooter in icy or slippery conditions or on salted surfaces (i.e., walks or roads). Such use may result in an accident, personal injury, or adversely affect the performance and safety of your scooter.**

**WARNING! Pride recommends that you do not expose your scooter to any type of moisture at any time (rain, snow, mist, or wash). Such exposure can damage your scooter. Never operate your scooter if it has been exposed to moisture until it has dried thoroughly.**

## FREEWHEEL MODE

Your scooter is equipped with a manual freewheel lever that when pulled up allows the scooter to be pushed. For more information about how to place your scooter into and out of freewheel mode, see V. “Your Revo Sport.”



**WARNING! Do not use your scooter in freewheel mode without an attendant present. Personal injury may result.**

**WARNING! Do not attempt to personally place your scooter in freewheel mode while seated on it. Personal injury may result. Ask an attendant for assistance if necessary.**

**WARNING! Do not place your scooter in freewheel mode while on an incline. The scooter could roll uncontrollably on its own, causing personal injury.**

An added safeguard built into the Revo Sport is “push-too-fast” protection which safeguards the scooter against gaining excessive speed while in freewheel mode.

“Push-too-fast” operates differently depending on which of two conditions exists.

- If the key is switched “off” while in freewheel mode, the scooter’s controller activates regenerative braking when you push the scooter faster than a maximum threshold which has been preprogrammed. In this case, the controller is acting as a speed governor.
- If the key is switched “on” while in freewheel mode you will encounter considerable resistance at any speed. This prevents the scooter from gaining unwanted momentum should the manual freewheel lever inadvertently be released while driving the scooter.

## II. SAFETY

### TIRE INFLATION

If your scooter is equipped with pneumatic tires, you should check or have the air pressure checked at least once a week. Proper inflation pressures will prolong the life of your tires and help ensure the smooth operation of your scooter. Do not exceed **35 psi** in your Revo Sport tires.



**WARNING! It is critically important that pneumatic tires be inflated to 30-35 psi. Do not underinflate or overinflate your tires. Improper tire pressure may result in catastrophic tire and/or wheel failure. Serious personal injury and/or property damage may result.**

**WARNING! Inflate your scooter drive tires from a regulated air source with an available pressure gauge. Minimum air pressure for scooter drive tires is 30-35 psi. Inflating your tires from an unregulated air source could overinflate them, resulting in a burst tire and/or personal injury.**

### STAIRS AND ESCALATORS

Scooters are not designed to travel up or down stairs or escalators. Always use an elevator.



**WARNING! Do not use your scooter to negotiate steps or escalators. You may cause injury to yourself and to others and damage your scooter.**

### DOORS

- Determine if the door opens toward or away from you.
- Use your hand to turn the knob or push the handle or push-bar.
- Drive your scooter gently and slowly forward to push the door open. Or drive your scooter gently and slowly backward to pull the door open.

### ELEVATORS

Modern elevators have a door edge safety mechanism that, when pushed, reopens the elevator door(s).

- If you are in the doorway of an elevator when the door(s) begin to close, push on the rubber door edge or allow the rubber door edge to contact the scooter and the door will reopen.
- Use care that pocketbooks, packages, or scooter accessories do not become caught in elevator doors.

### LIFT/ELEVATION PRODUCTS

If you will be traveling with your scooter, you may find it necessary to use a lift/elevation product to aid in transportation. Pride recommends that you closely review the instructions, specifications, and safety information set forth by the manufacturer of the lift/elevation product before using that product.

### BATTERIES

In addition to following the warnings below, be sure to comply with all other battery handling information. For more information about your scooter's batteries, see VI. "Batteries and Charging."



**WARNING! Battery posts, terminals, and related accessories contain lead and lead compounds. Wash hands after handling.**

**WARNING! Always protect the batteries from freezing and never charge a frozen battery. Charging a frozen battery may result in personal injury and/or damage to the battery.**

# II. SAFETY

## PREVENTING UNINTENDED MOVEMENT



**WARNING!** If you anticipate being seated in a stationary position for an extended period of time, turn off the power. This will prevent unexpected motion from inadvertent throttle control lever contact. Failure to do so may result in personal injury.

## MOTOR VEHICLE TRANSPORT

Currently, there are no standards approved for tie-down systems in a moving vehicle of any type to transport a person while seated in a scooter.

Although your scooter may be equipped with a positioning belt, this belt is not designed to provide proper restraint during motor vehicle transport. Anyone traveling in a motor vehicle should be properly secured in the motor vehicle seat with safety belts fastened securely.



**WARNING!** Do not sit on your scooter while it is in a moving vehicle. Personal injury and/or property damage may result.

**WARNING!** Always be sure your scooter and its battery/charger pack are properly secured when being transported. Failure to do so may result in personal injury and/or damage to your scooter.

## GETTING ONTO AND OFF OF YOUR SCOOTER

Getting onto and off of your scooter requires a good sense of balance. Please observe the following safety tips when getting onto and off of your scooter:

- Power down your scooter. See VII. “Operation.”
- Ensure that your scooter is not in freewheel mode. See V. “Your Revo Sport.”
- Make certain that the seat is locked into place and the key is removed from the key switch.
- The seat armrests can be flipped up to make getting on and off of the scooter easier.



**WARNING!** Position yourself as far back as possible in the scooter seat to prevent the scooter from tipping and causing injury.

**WARNING!** Avoid using your armrests for weight bearing purposes. Such use may cause the scooter to tip and cause personal injury.

**WARNING!** Avoid putting all of your weight on the floorboard. Such use may cause the scooter to tip and cause personal injury.

## II. SAFETY

### POSITIONING BELTS

Your authorized Pride provider, therapist(s), and other healthcare professionals are responsible for determining your requirement for a positioning belt in order to operate your scooter safely.



**WARNING! If you require a positioning belt to safely operate your scooter, make sure it is fastened securely. Serious personal injury may result if you fall from the scooter.**

### REACHING AND BENDING

Avoid reaching or bending while driving your scooter. When reaching, bending, or leaning while seated on your scooter, it is important to maintain a stable center of gravity and keep the scooter from tipping. Pride recommends that the scooter user determine his/her personal limitations and practice bending and reaching in the presence of a qualified healthcare professional.



**WARNING! Do not bend, lean, or reach for objects if you have to pick them up from the floor by reaching down between your knees. Movements such as these may change your center of gravity and the weight distribution of the scooter and cause your scooter to tip, possibly resulting in personal injury. Keep your hands away from the tires when driving.**

### PRESCRIPTION DRUGS/PHYSICAL LIMITATIONS

The scooter user must exercise care and common sense when operating his/her scooter. This includes awareness of safety issues when taking prescribed or over-the-counter drugs or when the user has specific physical limitations.



**WARNING! Consult your physician if you are taking prescribed or over-the-counter medication or if you have certain physical limitations. Some medications and limitations may impair your ability to operate your scooter in a safe manner.**

### ALCOHOL

The scooter user must exercise care and common sense when operating his/her scooter. This includes awareness of safety issues while under the influence of alcohol.



**WARNING! Do not operate your scooter while you are under the influence of alcohol, as this may impair your ability to drive safely.**

### REMOVABLE PARTS



**WARNING! Do not attempt to lift or move a scooter by any of its removable parts. Personal injury and damage to the scooter may result.**

# III. EMI / RFI

## **EMI/RFI WARNINGS**

Laboratory tests performed by the Food and Drug Administration (FDA) have shown that radio waves can cause unintended motion of electric mobility vehicles. Radio waves are a form of electromagnetic energy (EM). When electromagnetic energy adversely affects the operation of an electrical device, that adverse effect is called *Electromagnetic Interference (EMI)* or *Radio Frequency Interference (RFI)*.

## **EMI/RFI FREQUENTLY ASKED QUESTIONS (FAQS)**

The following FAQs summarize what you should know about EMI/RFI. Use this information to minimize the risk that EMI/RFI will adversely affect your mobility vehicle.

### **Where do radio waves come from?**

Radio waves are emitted from the antennas of cellular phones, mobile two-way radios (such as walkie-talkies and CBs), radio stations, TV stations, amateur radio (HAM) transmitters, wireless computer links, microwave sources, and paging transmitters. Radio waves are a form of electromagnetic energy (EM). EM is more intense closer to transmitting antennas, which are sources of emission. The greater the transmission strength, the greater the concern to electric mobility vehicle users.

### **If EMI/RFI affects my mobility vehicle, what kind of motion should I expect?**

This is difficult to predict. The answer would depend on a number of factors:

- The strength of the radio waves.
- The construction of your particular mobility vehicle.
- The location of your mobility vehicle (whether it is on the level ground or on an incline).
- Whether or not your mobility vehicle is in motion.

The motion of any electric mobility vehicle affected by EMI/RFI can be erratic. The mobility vehicle may come to a sudden stop or move in an uncontrolled manner. Also, it is possible for EMI/RFI to release the brakes of an electric mobility vehicle. Some intense EMI/RFI can even damage the control system components of an electric mobility vehicle.

### **Is there any way to know for certain whether or not radio waves are the cause of any unintended mobility vehicle motion?**

Unfortunately, EMI/RFI may be difficult to recognize, because the signals from radio sources are invisible and may be intermittent. However, the FDA recommends that you report all incidents of unintended motion or unintended brake release of your mobility vehicle to its manufacturer and, if possible, determine whether or not there was a radio wave source nearby at the time of the incident.

One precaution you can take against unintended motion of your mobility vehicle is to make certain that you or someone else is not the cause of the unintended motion.

- Turn off your mobility vehicle by removing the key from the key switch when you are mounting or dismounting your mobility vehicle.
- Never leave the key in the key switch of an unattended mobility vehicle.
- By following these steps, you greatly reduce the risk of you or anyone else inadvertently bumping the throttle control levers and causing the mobility vehicle to move unintentionally.

### **Has anyone been injured by the erratic, unintended motion of an electric mobility vehicle?**

The FDA has reports of injuries that resulted from uncontrolled motion of electric mobility vehicles, but it is not clear just how many of those injuries were actually caused by EMI/RFI.

# III. EMI / RFI

## **Are all electric mobility vehicles susceptible to EMI/RFI?**

Each make and model of electric mobility vehicle differs in its ability to resist EMI/RFI. Every mobility vehicle has a particular level of resistance to EMI/RFI. This resistance is measured in volts per meter (V/m). A higher resistance level offers greater protection against EMI/RFI. In other words, an electric mobility vehicle with a high resistance level is less likely to be affected by a strong radio source than is an electric mobility vehicle with a low resistance level.

## **What is the FDA doing about the problem?**

The FDA has written to electric mobility vehicle manufacturers and requested that those manufacturers test their new mobility vehicle models to be certain that they provide a reasonable degree of resistance against EMI/RFI. The FDA has stated that all newly manufactured electric mobility vehicle models should have a resistance level of at least 20 V/m. This level of resistance provides a reasonable degree of protection against the common sources of EMI/RFI.

The FDA has also requested or recommended that:

- Electric mobility vehicle manufacturers clearly label new products with their resistance level or state that the resistance level is not known.
- The labeling or informational material supplied with new electric mobility vehicles must explain what the resistance level means and warn users about the possibility of EMI/RFI and how to avoid it.
- Electric mobility vehicle manufacturers undertake an educational program to inform electric mobility vehicle users and their caregivers about the problems associated with EMI/RFI and about the actions they can take to minimize the risk of EMI/RFI.
- While there is no exact way to tell if your mobility vehicle is totally safe, an immunity level of 20 V/m is generally achievable and useful. This product has been tested and passed at an immunity level of 20 V/m.

## **What can I do to find out if my mobility vehicle is likely to be affected by EMI/RFI?**

If you have had your mobility vehicle for some time and have not experienced any unintended motion, it is not likely that you will have a problem in the future. However, it is always possible that EMI/RFI problems could arise if you are close to a source of radio waves. Therefore, it is very important for you to be alert to this possibility. The mobility vehicle meets or exceeds a resistance level of at least 20 V/m.

## **What can I do to reduce the risk of my mobility vehicle being affected by EMI/RFI?**

Here are some precautions you can take:

- Do not turn on or use hand-held personal communications devices, such as citizens band (CB) radios and cellular phones, while your mobility vehicle is turned on.
- Be aware of nearby radio wave transmitters, such as radio or TV stations and hand-held or mobile two-way radios. Try not to operate your mobility vehicle too close to those transmitters. For example, if you are on an electric mobility vehicle with a resistance level of at least 20 V/m, you should remain at least three feet from a hand-held two-way radio and at least ten feet from a mobile two-way radio.
- Be aware that adding accessories and/or components, or modifying your mobility vehicle in any way, may change its EMI/RFI resistance level and may make it more susceptible to interference from radio wave sources.

## **What should I do if my mobility vehicle moves unexpectedly?**

If unintended motion or unintended brake release occurs, turn off your mobility vehicle (by removing the key) as soon as it is safe to do so.

## **If my mobility vehicle moves unintentionally, where should I report the incident?**

Call the Pride Technical Service Department at 1-800-800-8586 to report the incident.



# IV. SPECIFICATIONS

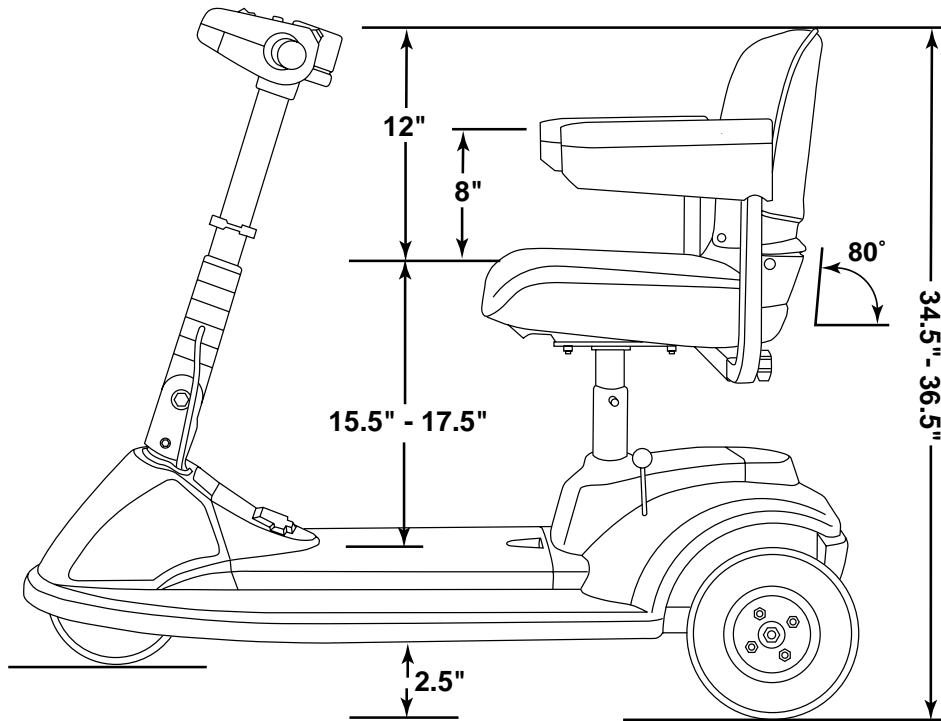
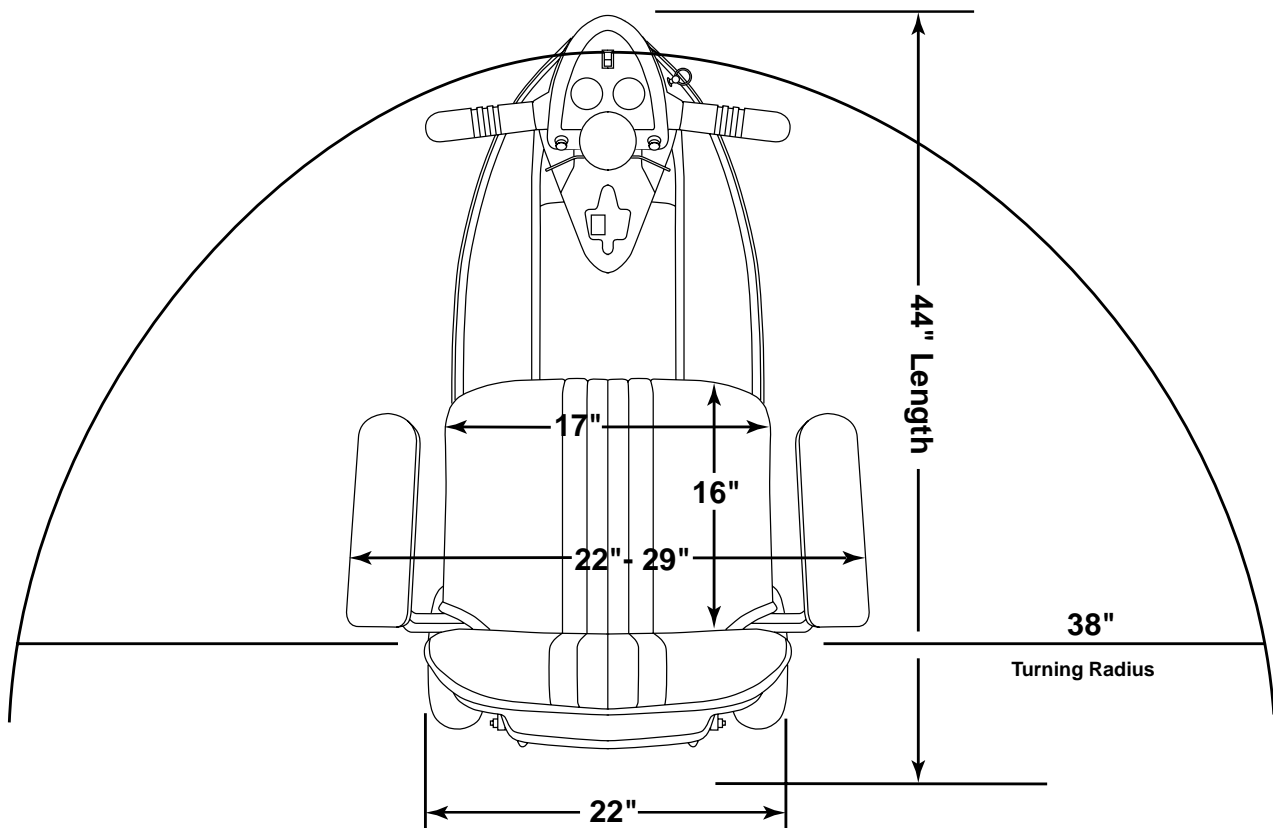


FIGURE 4. REVO SPORT DIMENSIONS



# IV. SPECIFICATIONS

<b>Model Numbers</b>	SPSC60RRED (Revo Red), SPSC60RBLU (Revo Blue), SPSC60RYEL (Revo Yellow)
<b>Available Colors</b>	Revo Red, Revo Blue, Revo Yellow
<b>Overall Length</b>	44 in.
<b>Overall Width</b>	22 in.
<b>Total Weight Without Batteries</b>	85 lbs.
<b>Heaviest Piece When Disassembled</b>	Frame: 62 lbs.
<b>Turning Radius</b>	38 in.
<b>Speed (max)</b>	Variable up to 4.25 mph (6 mph with Turbo button)
<b>Range Per Charge*</b>	(12V 17 AH batteries) Up to 12-15 miles
<b>Ground Clearance</b>	2.5 in.
<b>Weight Capacity</b>	250 lbs.
<b>Standard Seating</b>	Type: Foldable molded plastic Dimensions: 17 in. width x 16 in. depth (usable) x 12 in. height (usable) Material: Charcoal fabric only
<b>Drive System</b>	Rear-wheel drive, 24V sealed transaxle
<b>Dual Braking System</b>	Electronic, regenerative and electromechanical
<b>Wheels</b>	Black molded plastic
<b>Tires</b>	Type: solid; front: 2 in. x 8 in., rear: 3 in. x 9 in.
<b>Battery Requirements</b>	Type: 12-volt Amp Hours: 17 AH, SLA (sealed lead-acid)
<b>Battery Charger</b>	2-amp charger (contained within the battery/charger pack)
<b>Warranty</b>	3-year limited
<b>Accessories</b>	Single cane/crutch holder; double cane/crutch holder; walker holder; forearm crutch holder; oxygen tank holder; rear basket; front basket; cup holder; safety flag; dust cover

\* Varies with user weight, terrain type, battery charge, battery condition, and tire pressure

# V. YOUR REVO SPORT

## TILLER CONSOLE

The tiller console houses all controls needed to drive your Revo Sport, including the speed adjustment dial, throttle control levers, battery condition meter, running lights switch, turbo button, and horn buttons. See figure 5.



**WARNING!** Do not expose the tiller console to moisture. In the event that the tiller console does become exposed to moisture, do not attempt to operate your scooter until the tiller console has dried thoroughly.

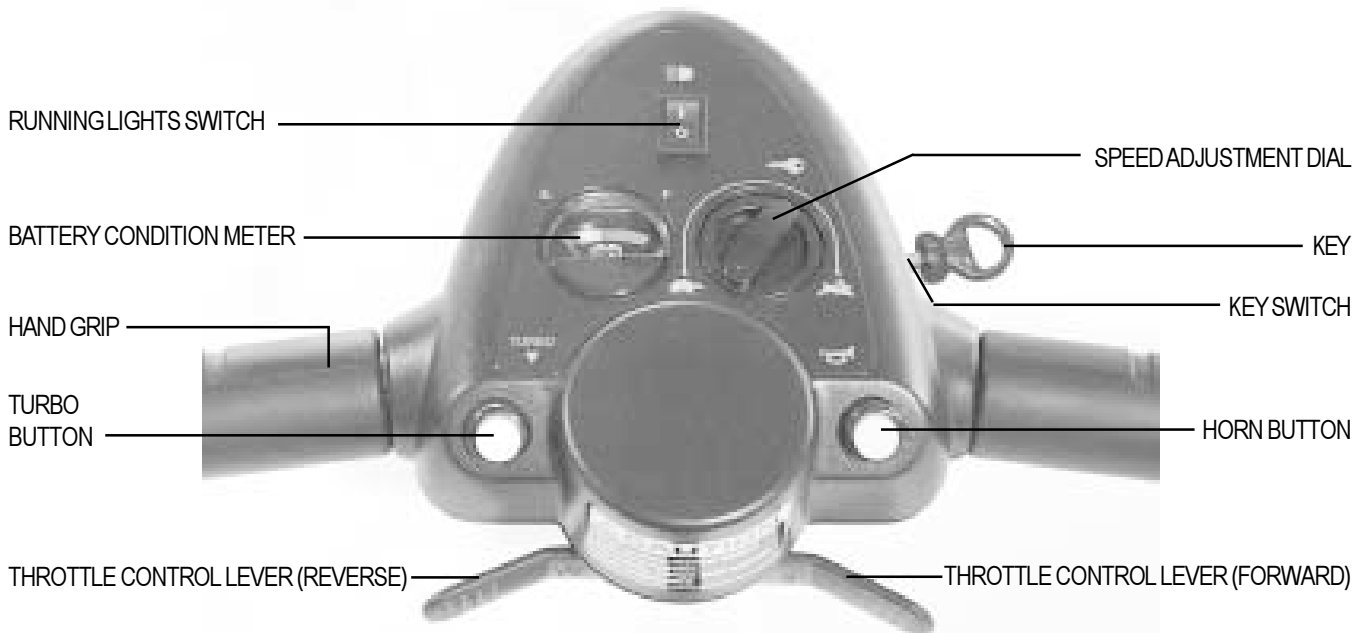


FIGURE 5. TILLER CONSOLE

### Key Switch

- Fully insert the key into the key switch to power up (turn on) your Revo Sport.
- Remove the key from the key switch to power down (turn off) your Revo Sport.

### Throttle Control Levers

These levers allow you to control the forward speed and the reverse speed of your scooter up to the maximum speed you preset with the speed adjustment dial.

- Place your right hand on the right handgrip and your left hand on the left handgrip.
- Use your right thumb to push the right side of the lever to disengage your Revo Sport's brakes and move forward.
- Release the lever and allow your Revo Sport to come to a complete stop before pushing the other side of the lever to move in reverse.
- When the throttle is completely released, it automatically returns to the center "stop" position and engages your Revo Sport's brakes.

### Running Lights Switch

This button controls your Revo Sport's front and rear running lights.

- Toggle the switch forward to turn on your Revo Sport's running lights.
- Toggle the switch back to turn off your Revo Sport's running lights.

### Horn Button

The key must be fully inserted into the key switch for the horn to be operational.

- This button activates a warning horn.
- Do not hesitate to use the warning horn when doing so may prevent accident or injury.

# V. YOUR REVO SPORT

## **Turbo Button**

Pressing the Turbo button will accelerate the scooter to a top speed of 6 mph when the speed adjustment dial is set to more than 3/4 of the scooter's top speed and the throttle control lever is fully depressed.

When the Turbo button is released, the scooter then returns to the normal maximum "scooter mode" speed of approximately 4.25 mph (depending upon where the speed adjustment dial is set).

## **TURBO MODE**

Turbo mode provides the option to increase the scooter speed by pressing and holding in the Turbo button while driving a straight course on flat and smooth terrain. This beneficial feature allows the user to travel greater distances in less time as compared to the "conventional" scooter speed mode.

If cornering while in Turbo mode, the scooter will slow to the speed set on the speed adjustment dial. As an added safeguard, always release the Turbo button whenever turning, driving on inclines or driving on uneven/bumpy terrain. Once the scooter has completed the turn and is on a straight course, the scooter will resume Turbo mode speed.



**WARNING!** In the event the Turbo button sticks or malfunctions when you try to use it, Pride recommends that you release the throttle control lever to stop your scooter. Turn the speed adjustment dial to under 3/4 full speed (below the 2 o'clock position) to disable the Turbo feature and notify your authorized Pride provider immediately.



**WARNING!** Your scooter's Turbo mode has been engineered to safely function while driving a straight course on flat and smooth terrain. To eliminate the possibility of injury, Pride recommends that you adhere to the following rules for engaging and disengaging the Turbo mode.

- Do not press the Turbo button while turning the scooter.
- Do not press the Turbo button while driving on inclines of any type.
- Do not press the Turbo button while driving on uneven, bumpy terrain.
- Release the Turbo button before entering a turn, an incline, or uneven terrain of any type.

# V. YOUR REVO SPORT

## BATTERY/CHARGER PACK

The scooter is equipped with an easy to remove self-contained battery/charger pack. The pack contains everything necessary to charge and monitor the charging of the Revo Sport's batteries, including the charger power cord receptacle, the ammeter, the main circuit breaker (reset button), and the batteries. See figure 6.

Since the scooter has a removable battery/charger pack, you have the option of charging the batteries on or off of the scooter. See IX. "Disassembly and Assembly" for instructions on removing the battery/charger pack.

### Batteries (Inside the Pack)

The batteries store electrical energy that powers your Revo Sport. See VI. "Batteries and Charging."

### Charger Power Cord Receptacle

The charger power cord plugs into your Revo Sport's battery charger by means of the charger power cord receptacle.

### Ammeter

During charging, the ammeter indicates the charging rate, or how hard the charger is working to charge the Revo Sport's batteries. See VI. "Batteries and Charging."

### Main Circuit Breaker (Reset Button)

When the voltage in your Revo Sport's batteries becomes low or the scooter is heavily strained because of excessive loads or steep inclines, the main circuit breaker may trip to protect the motor and electronics from damage. See figure 6.

- The main circuit breaker reset button pops out when the breaker trips.
- When the breaker trips, the entire electrical system of your scooter shuts down.
- Allow a minute or two for your Revo Sport's electronics to "rest."
- Push in the reset button to reset the main circuit breaker.
- If the main circuit breaker trips frequently, you may need to charge your batteries more often. You may also need to have your authorized Pride provider perform a load test on your Revo Sport's batteries.
- If the main circuit breaker trips repeatedly, see your authorized Pride provider for service.

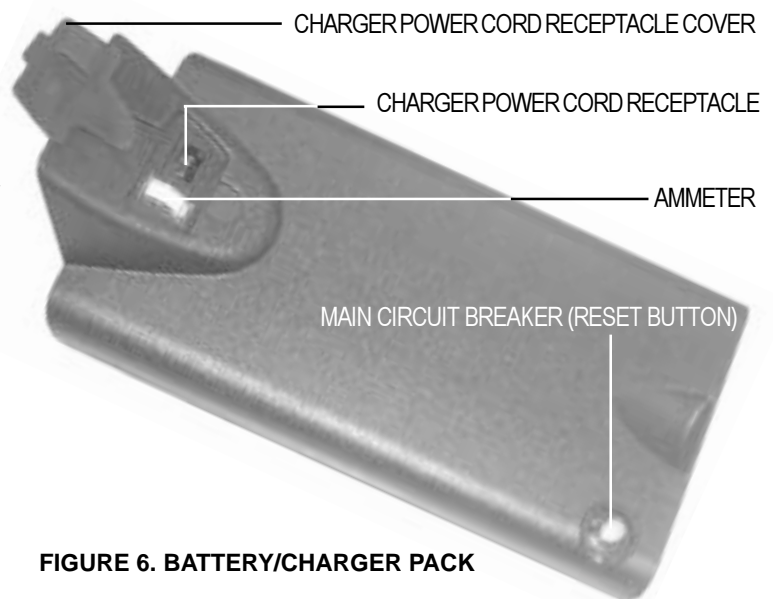


FIGURE 6. BATTERY/CHARGER PACK

# V. YOUR REVO SPORT

## REAR SECTION

The manual freewheel lever, anti-tip wheels, and the motor/transaxle assembly (not shown) are located on the rear section of your scooter. See figures 7 and 8.



**WARNING!** Before placing your Revo Sport into or taking it out of freewheel mode, make certain that the key is removed from the key switch. Never sit on a scooter when it is in freewheel mode. Never put a scooter in freewheel mode on any incline.

### Manual Freewheel Lever

Whenever you need or want to push your Revo Sport for short distances, you can put it in freewheel mode.

- The manual freewheel lever is located on the end of the motor/transaxle assembly at the left rear of the Revo Sport. See figure 7.
- Pull up on the manual freewheel lever to disable the drive system and the brake system.
- You may now push your Revo Sport.
- Push the manual freewheel lever down to reengage the drive and the brake systems, and take your Revo Sport out of freewheel mode.



FIGURE 7. MANUAL FREEWHEEL LEVER

*NOTE: If the scooter is placed in freewheel mode (manual freewheel lever pulled up) while the key is in the key switch, the scooter will not run until the manual freewheel lever is pushed down and the key fully removed from the key switch, then inserted back into the key switch.*



**WARNING!** Never operate the manual freewheel lever while seated on the scooter or when the scooter is on an incline.

#### OPERATING THE MANUAL FREEWHEEL LEVER

- Only put the scooter in freewheel mode when on a flat surface with the key removed.
- Always pull UP FIRMLY on the manual freewheel lever to put the scooter into freewheel mode.
- Always push DOWN FIRMLY to engage drive mode.

### Anti-Tip Wheels

The anti-tip wheels are an integral and important safety feature of your Revo Sport. Do not, under any circumstances, remove the anti-tip wheels from your Revo Sport. See figure 8. Your scooter is also equipped with front anti-tip wheels.

### Motor/Transaxle Assembly (Not Shown)

The motor/transaxle assembly is an electromechanical unit that converts electrical energy from your Revo Sport's batteries into the controlled mechanical energy that drives the Revo Sport's wheels.

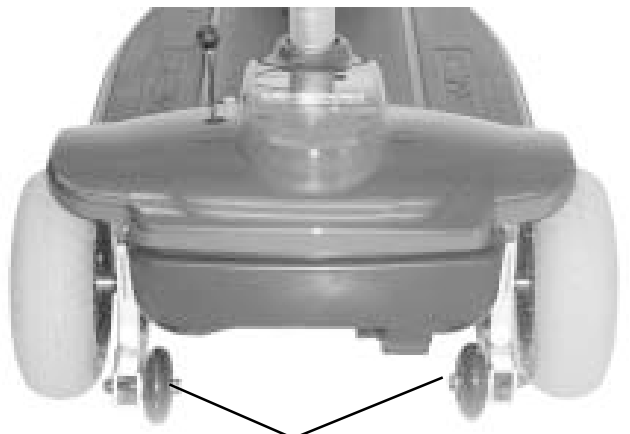


FIGURE 8. ANTI-TIP WHEELS

# VI. BATTERIES AND CHARGING

Your Revo Sport is equipped with a battery/charger pack which includes two sealed, maintenance free 17 AH batteries.

- Charge the batteries prior to using your Revo Sport for the first time.
- Keeping the batteries fully charged will keep your scooter running smoothly.

## READING YOUR BATTERY VOLTAGE

The battery condition meter on the tiller console indicates the approximate strength of your batteries using a color code. See figure 9. Green indicates fully charged batteries, yellow a draining charge, and red indicates that an immediate recharge is necessary. To check the charge, you must first unplug the charger power cord and power up your scooter.

You can also check the charge using the ammeter, which is located on the battery/charger pack. The charger power cord must be plugged into a standard wall outlet in order to obtain a reading. When the amperage reading is at or near zero amps, the battery charging is complete. See figure 10.

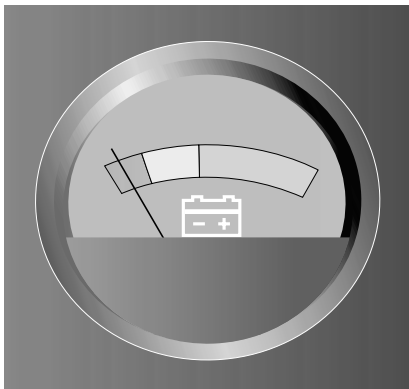


FIGURE 9. BATTERY CONDITION METER

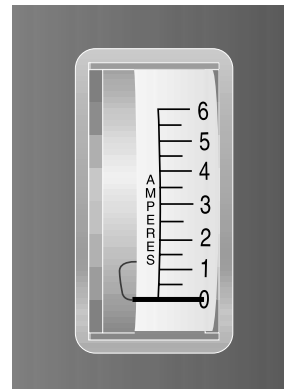


FIGURE 10. AMMETER INDICATES BATTERIES ARE FULLY CHARGED

## CHARGING YOUR BATTERIES

Follow these easy steps to charge your batteries safely:

1. Position your scooter close to a standard wall outlet.
2. Remove the key from the key switch.
3. Make certain that the manual freewheel lever is in the drive (down) position.
4. Remove the charger power cord receptacle cover and plug the charger power cord into the charger power cord receptacle on the battery/charger pack.
5. Extend the charger power cord and plug it into the wall outlet. It is recommended that you charge your batteries for 8 to 14 hours.



**WARNING! Never use an extension cord to plug in your battery charger. Plug the charger directly into a properly wired standard wall outlet.**

6. When the batteries are fully charged, unplug the charger power cord from the wall outlet and then from the charger power cord receptacle.
7. Replace the charger power cord receptacle cover. See figure 6.

*NOTE: There is a charger inhibit function on your scooter. The scooter will not run and the battery condition meter will not operate while the batteries are charging.*

# VI. BATTERIES AND CHARGING

## BATTERIES AND CHARGING-FREQUENTLY ASKED QUESTIONS (FAQS)

### How does the charger work?

When your Revo Sport's battery voltage is low the charger works harder, sending more electrical current to the batteries to bring up their charge. As the voltage approaches full charge, the charger sends less and less electrical current to the batteries. When the batteries are fully charged, the current sent by the charger is at nearly zero amperage. Therefore, when the charger is plugged in, it maintains the charge on your Revo Sport's batteries, but does not overcharge them. We do not recommend that you charge your Revo Sport's batteries for more than 24 consecutive hours.

### What if my Revo Sport's batteries won't charge?

- Ensure that both ends of the charger power cord are inserted fully.

### How often must I charge the batteries?

Two major factors must be considered when deciding how often to charge your Revo Sport's batteries:

- All day scooter use on a daily basis.
- Infrequent or sporadic scooter use.

With these considerations in mind, you can determine how often and for how long you should charge your Revo Sport's batteries. We designed the onboard charger so that it will not overcharge your scooter's batteries. However, you may encounter some problems if you do not charge your batteries often enough and if you do not charge them on a regular basis. Following the five guidelines below will provide safe and reliable battery operation and charging.

- If you use your scooter daily, charge its batteries as soon as you finish using it for the day. Your scooter will be ready each morning to give you a full day of service. We recommend that you charge your Revo Sport's batteries for 8 to 14 hours after daily use.
- If you use your scooter once a week or less, charge its batteries at least once a week for 12 to 14 hours at a time.
- Keep your Revo Sport's batteries fully charged.
- Avoid deeply discharging your Revo Sport's batteries.
- Do not charge your Revo Sport's batteries for more than 24 consecutive hours.

### How can I get maximum range or distance per charge?

Rarely will you have ideal driving conditions—smooth, flat, hard driving surfaces with no wind or curves. Often you will face hills, sidewalk cracks, uneven and loosely packed surfaces, curves, and wind, all of which affect the distance or running time per battery charge. Below are a few suggestions for obtaining the maximum range per battery charge.

- Fully charge your Revo Sport's batteries prior to use.
- Plan your route to avoid as many hills, cracked, broken, or soft surfaces as possible.
- Limit your baggage weight to essential items.
- Try to maintain an even speed while your scooter is in motion.
- Avoid stop-and-go driving.

### What about public transportation?

If you intend to use public transportation with your scooter, you must contact the transportation provider in advance to determine their specific requirements.



## VI. BATTERIES AND CHARGING

### What type and size battery should I use?

Your scooter comes equipped with two deep-cycle batteries that are sealed and maintenance free. Both sealed lead-acid and gel cell are deep-cycle batteries are similar in performance. Do not use wet-cell batteries, which have removable caps.

Battery specifications:

Type:	Deep-cycle (sealed lead-acid or gel cell)
Size:	17 AH (amp hours)
Voltage:	12 volts each
Amperage:	17 AH

### Why do my new batteries seem weak?

Deep-cycle batteries employ a different chemical technology than that used in car batteries, nickel-cadmium batteries (nicads), or in other common battery types. Deep-cycle batteries are specifically designed to provide power, drain down their charge, and then accept a relatively quick recharge.

We work closely with our battery manufacturer to provide batteries that best suit your Revo Sport's specific electrical demands. Fresh batteries arrive daily at Pride and are shipped fully charged to our customers. During shipping, the batteries may encounter temperature extremes that may influence their initial performance. Heat diminishes the charge on the battery; cold slows the available power and extends the time needed to recharge the battery.

It may take a few days for the temperature of your Revo Sport's batteries to stabilize and adjust to their new room or ambient temperature.



**WARNING! If your Revo Sport's battery/charger pack does become frozen, do not attempt to charge it. Cold or frozen batteries should be allowed to warm up for several days prior to recharging.**

It takes a few charging cycles (partial drains followed by full recharging) to establish the critical chemical balance that is essential to a deep-cycle battery's peak performance and long life.

Follow these steps to properly break-in your Revo Sport's new batteries for maximum efficiency and service life.

1. Fully recharge any new battery prior to its initial use. This charging cycle brings the battery up to about 88% of its peak performance level.
2. Operate your new scooter in familiar and safe areas. Drive slowly at first, and do not travel too far from your home or familiar surroundings until you have become accustomed to your scooter's controls.
3. Fully recharge the batteries. They should be at over 90% of their peak performance level.
4. Operate your scooter again.
5. Fully recharge the batteries again.
6. After four or five charging cycles, the batteries are able to receive a charge of 100% of their peak performance level and are able to last for an extended period of time.

### How can I ensure maximum battery life?

Fully charged deep-cycle batteries provide reliable performance and extended battery life. Keep your Revo Sport's batteries fully charged whenever possible. Batteries that are regularly and deeply discharged, infrequently charged, or stored without a full charge may be permanently damaged, causing unreliable performance and limited service life.

# VI. BATTERIES AND CHARGING

## REPLACING YOUR REVO SPORT'S BATTERIES

### Battery Removal

Remove the battery/charger pack from the scooter. See the disassembly portion of IX. "Disassembly and Assembly" for removing the pack.

1. Remove the ten (10) screws holding the battery/charger pack together.
2. Remove the charger from within the pack. Stand the batteries upright and next to each other. See figure 11.
3. Disconnect the wires leading to the four battery terminals by removing the nut and bolt from each. See figure 12.
4. Remove batteries from the battery/charger pack.

### Battery Replacement

1. Place battery 1 inside the pack in the upright position.
2. Connect the red wire labeled (B1+) to the positive (+) battery terminal and the black wire labeled (B1-) to the negative (-) battery terminal using the nut and bolt. See figure 12.
3. After making the connections to battery 1, lay the battery on its side and position it at the end of the battery/charger pack so the battery terminals face you. See figure 13.
4. Place battery 2 inside the battery/charger pack in the upright position. See figure 13.
5. Connect the red wire labeled (B2+) to the positive (+) battery terminal and black wire labeled (B2-) to the negative (-) battery terminal using the nut and bolt.



**WARNING!** When connecting the battery wires, ensure they are each connected to their proper battery terminal.

6. Position battery 2 on its side and place it in front of battery 1. See figure 13.
7. Put the charger back into position. See figure 14.
8. Place the battery/charger pack lid over the batteries.



**CAUTION!** Be sure all wires are secured inside the battery/charger pack and are not being pinched between the two halves of the pack.

9. Replace the ten (10) screws that secure the battery/charger pack lid to the base.

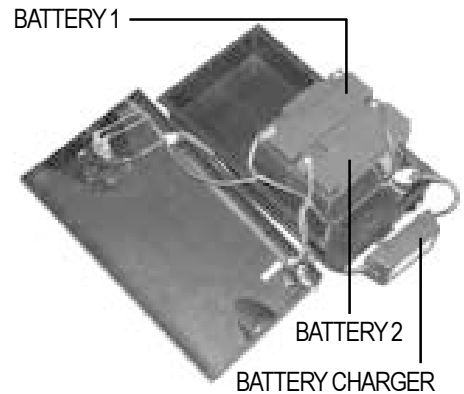


FIGURE 11. LID AND BATTERY CHARGER REMOVAL



FIGURE 12. BATTERY CABLE REMOVAL

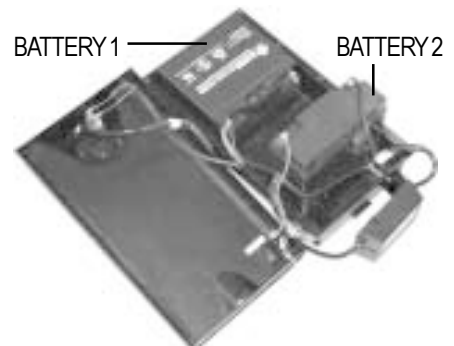


FIGURE 13. BATTERY PLACEMENT

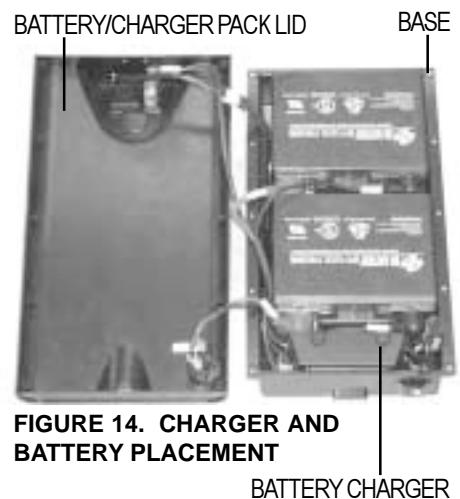


FIGURE 14. CHARGER AND BATTERY PLACEMENT

# VII. OPERATION

## BEFORE GETTING ON YOUR REVO SPORT

- Have you fully charged the batteries? See VI. “Batteries and Charging.”
- Is the manual freewheel lever in the drive (down) position? Never leave the manual freewheel lever pulled up unless you are manually pushing your Revo Sport.

## GETTING ON YOUR REVO SPORT

1. Make certain that the key is removed from the key switch.
2. Stand at the side of your Revo Sport.
3. Pull up on the seat lock lever and rotate the seat until it is facing you.
4. Make certain that the seat is locked securely in position.
5. Position yourself comfortably and securely in the seat.
6. Pull up on the seat lock lever and rotate the seat until you are facing forward.
7. Make certain that the seat is locked securely in position.
8. Make certain that your feet are safely on the floorboard.



**WARNING! Never attempt to board or exit your scooter without first removing the key from the key switch. This will prevent the scooter from moving if accidental contact is made with the throttle control levers.**

## PRE-RIDE ADJUSTMENTS AND CHECKS

- Are you positioned comfortably in the seat? See “Getting On Your Revo Sport,” above.
- Is the seat at the proper height? See VIII. “Comfort Adjustments.”
- Is the seat locked securely in place? See VIII. “Comfort Adjustments.”
- Is the tiller handle at a comfortable setting and locked securely in place? See VIII. “Comfort Adjustments.”
- Is the key fully inserted into the key switch? See V. “Your Revo Sport.”
- Is the speed adjustment dial set to a slow setting? See V. “Your Revo Sport.”
- Are you grasping the handgrips with a thumb resting on each side of the throttle control lever? See V. “Your Revo Sport.”
- Does the Revo Sport’s horn work properly?
- Is your proposed path clear of people, pets, and obstacles?
- Have you planned your route to avoid adverse terrain and as many inclines as possible?

## OPERATING YOUR REVO SPORT

After planning your route:

- Set the speed adjustment dial to your desired speed.
- Press your thumb against the appropriate throttle control lever.
- The electromechanical disc park brake automatically disengages and the scooter accelerates smoothly to the speed you preselected with the speed adjustment dial.

## WHETHER YOU ARE DRIVING FORWARD OR IN REVERSE

- Pull on the left handgrip to steer your scooter to the left.
- Pull on the right handgrip to steer your scooter to the right.
- Move the tiller to the center position to drive straight ahead.
- Release the throttle control lever to decelerate and come to a complete stop.
- The electromechanical disc park brake automatically engages when your scooter comes to a stop.

## VII. OPERATION

### GETTING OFF OF YOUR REVO SPORT

1. Bring your scooter to a complete stop.
2. *Make certain that the key is removed from the key switch.*
3. Pull up on the seat lock lever and rotate the seat until you are facing toward the side of your Revo Sport.
4. Make certain that the seat is locked securely in position.
5. Carefully and safely get out of the seat and stand to the side of your Revo Sport.
6. You can leave the seat facing to the side to facilitate boarding your scooter the next time you wish to operate it.

# VIII. COMFORT ADJUSTMENTS

## TILLER ANGLE ADJUSTMENT



**WARNING!** Remove the key from the key switch before adjusting the tiller. Never attempt to adjust the tiller while the scooter is in motion.

Your Revo Sport is equipped with a pivoting tiller that allows adjustment to several positions from the scooter deck to the farthest forward stop.

1. Turn the tiller adjustment knob counterclockwise to loosen the tiller. See figure 15.
2. Move the tiller to a comfortable position.
3. Turn the tiller adjustment knob clockwise to secure the tiller in position.

*NOTE: In order to lower the tiller to the scooter deck, you must first remove the seat. See IX. “Disassembly and Assembly.”*



FIGURE 15. TILLER ADJUSTMENT

## SEAT ROTATION

The seat lock lever locks the seat in one of four positions.

1. Pull up on the seat lock lever to unlock the seat. See figure 16.
2. Rotate the seat to the desired position.
3. Release the seat lock lever to lock the seat securely in place.

## ARMREST WIDTH ADJUSTMENT

The Revo Sport armrest width can be adjusted inward or outward.

1. Loosen the armrest adjustment knobs at the back of the seat frame. See figure 16.
2. Slide the armrests in or out to the desired width.
3. Tighten the armrest adjustment knobs as required.

The armrests can also be lifted upward to aid in mounting and dismounting your Revo Sport.



FIGURE 16. SEAT ADJUSTMENTS

## FRONT-TO-BACK SEAT ADJUSTMENT

You can reposition the Revo Sport’s seat forward or rearward to one of three settings, thereby adjusting the distance between the seat and the tiller. See figure 16.

1. Remove the seat from your Revo Sport. Refer to IX. “Disassembly and Assembly.”
2. Remove the four bolts that fasten the seat to the seat platform. See figure 16.
3. Align the seat platform with the desired set of holes on the seat.
4. Replace and tighten the four bolts securely.

## VIII. COMFORT ADJUSTMENTS

### SEAT HEIGHT ADJUSTMENT

The seat can be repositioned to one of three different heights. See figure 17.

1. Remove the seat from your Revo Sport. See IX. “Disassembly and Assembly.”
2. Use the attached ring to pull and remove the detent pin from the lower seat post.
3. Raise or lower the upper seat post to the desired seat height.
4. While holding the upper seat post at that height, match up the adjustment holes in the upper and lower seat post.
5. Fully insert the detent pin.
6. Replace the seat.

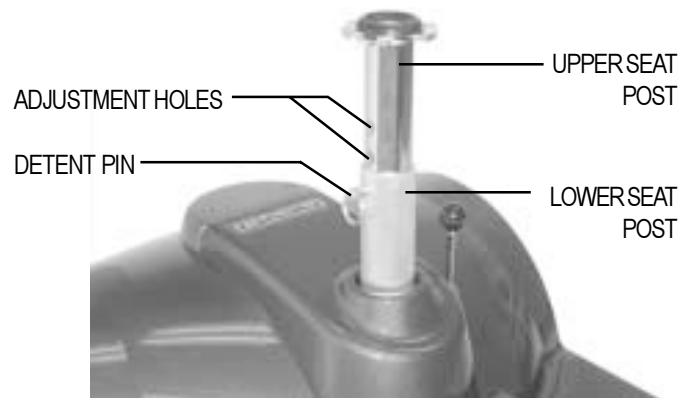


FIGURE 17. SEAT HEIGHT ADJUSTMENT

# IX. DISASSEMBLY AND ASSEMBLY

## DISASSEMBLY

No tools are required to disassemble or assemble your Revo Sport. Always disassemble or assemble your scooter on a level, dry surface with sufficient room for you to work. Keep in mind that the disassembled sections of the Revo Sport take up more floor space than the assembled Revo Sport.

You can disassemble the Revo Sport into three pieces: the seat, weighing 23 lbs., the frame, weighing 62 lbs., and the battery/charger pack, weighing 32 lbs. Place the scooter in an area where you have sufficient clearance to move the parts around.



**WARNING!** If you believe that lifting any component of the Revo Sport is beyond your physical capability, have someone with ample strength lift it for you.

Before beginning disassembly, remove the key, place the manual free-wheel lever in the drive (down) position.

1. Pull up on the seat lock lever to unlock the seat. Rotate the seat one-eighth of a turn, and lift the seat up and off the Revo Sport. See figure 18.
2. Lift the battery/charger pack up and off the frame and rest it on the left side of the scooter as shown in figures 19 and 20.
3. Unplug the wiring harness from the rear of the battery/charger pack. See figure 21.
4. Grab the hand grip on the tiller, loosen the tiller adjustment knob, and gently lower the tiller down to the center of the Revo Sport chassis until it is fully lowered. See figure 22.
5. Fully tighten the tiller adjustment knob.



FIGURE 18. SEAT REMOVAL



**CAUTION!** When removing the battery/charger pack and disconnecting the wiring harness, do not extend the wiring harness farther than what is shown in figure 20. Overextension could cause damage to the scooter.



FIGURE 19. LIFTING THE BATTERY/CHARGER PACK

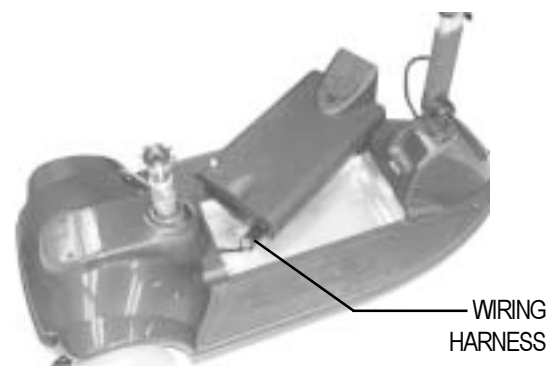


FIGURE 20. BATTERY/CHARGER PACK ORIENTATION PRIOR TO DISCONNECTING THE WIRING HARNESS

# IX. DISASSEMBLY AND ASSEMBLY

## ASSEMBLY

*NOTE: Raise the tiller before starting to assemble the Revo Sport.*

1. Place the manual freewheel lever in the drive (down) position.
2. Raise the tiller and tighten the tiller adjustment knob.
3. Place the battery/charger pack on the frame. See figure 20.
4. Reconnect the wiring harness to the rear of the battery/charger pack. See figure 21.
5. Secure the battery/charger pack into position.
6. Replace the seat.
7. Rotate the seat until it locks into place.



**FIGURE 21. WIRING HARNESS REMOVAL/RECONNECT**



**FIGURE 22. LOWEST TILLER POSITION**

## LIFTING THE REVO SPORT

The Revo Sport is small and lightweight for optimal transportability. To lift the Revo Sport and place it into a transport vehicle, use the rear bumper and the tiller grip as hand holds. See figure 22.

- If one person is lifting the Revo Sport (see figure 23) it is advisable to remove the battery/charger pack.
- When it is necessary for two people to lift the Revo Sport, refer to figure 24 for the proper lifting positions.



**WARNING! Before lifting the Revo Sport, make certain the tiller adjustment knob is fully tightened.**



**FIGURE 23. SINGLE PERSON LIFT (BATTERY/CHARGER PACK REMOVED)**



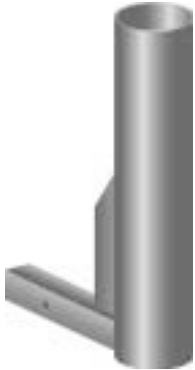
**FIGURE 24. TWO PERSON LIFT**



# X. OPTIONAL ACCESSORIES

## OPTIONAL ACCESSORIES

For information concerning these optional accessories, see your authorized Pride provider.



• SINGLE CANE/CRUTCH HOLDER



• DOUBLE CANE/CRUTCH HOLDER



• WALKER HOLDER



• FOREARM CRUTCH HOLDER



• OXYGEN TANK HOLDER



• REAR BASKET



• FRONT BASKET



• SAFETY FLAG



• CUP HOLDER



• DUST COVER

# XI. BASIC TROUBLESHOOTING

Any electromechanical device requires occasional troubleshooting. However, most problems that arise can usually be solved with a bit of thought and common sense. Many of these problems occur because the batteries are not fully charged or because the batteries are worn down and can no longer hold a charge.

## **What if all the systems on my Revo Sport seem to be “dead”?**

- Make certain that the key is fully inserted into the key switch.
- Check that the batteries are fully charged. See VI. “Batteries and Charging.”
- Push in the main circuit breaker’s reset button. See V. “Your Revo Sport.”
- Make certain that the wiring harness is firmly connected to the back of the battery/charger pack.
- Be sure the auto shutoff feature hasn’t been activated. See Below.

## **AUTO SHUTOFF FEATURE**

The scooter is equipped with an energy saving auto shutoff feature.

- If the scooter key switch is left in the on position and the scooter remains inactive for approximately 20 minutes, the motor controller will automatically shut down. This feature is designed to preserve battery life.

*NOTE: Although the motor controller will be shut down by the auto shutoff feature, all activated lights will remain on. For maximum battery life it is recommended that you turn off your lights or turn the key to the off position.*

To restore power back to the scooter:

- Remove the key from the key switch.
- Insert the key back into the key switch.

Your scooter will now resume normal operation.

## **What if the motor runs but my Revo Sport does not move?**

- Your Revo Sport was probably left in manual freewheel mode.
- When the manual freewheel lever is pulled up, the brakes are disengaged and all power to the motor/transaxle is cut.
- Push the manual freewheel lever down to restore normal operation to your Revo Sport.

## **What if the main circuit breaker trips repeatedly? See V. “Your Revo Sport.”**

- Charge the Revo Sport’s batteries more frequently. See VI. “Batteries and Charging.”
- If the problem persists, have both of your Revo Sport’s batteries load tested by your authorized Pride provider.
- See VI. “Batteries and Charging” or IV. “Specifications” for information about your Revo Sport’s battery type.

## **What if the battery condition meter dips way down and the motor surges or hesitates when I press my Revo Sport’s throttle control lever? See V. “Your Revo Sport.”**

- Fully charge your Revo Sport’s batteries. See VI. “Batteries and Charging.”
- Have your authorized Pride provider load test each battery.

If you experience any problems with your Revo Sport that you are not able to solve, contact your authorized Pride provider for information, maintenance, and service.

## XII. CARE AND MAINTENANCE

Your Revo Sport requires a minimal amount of care and maintenance. If you do not feel confident in your ability to perform the maintenance listed below, you may schedule inspection and maintenance with your authorized Pride provider. The following areas require periodic inspection and/or care and maintenance.

### TIRE CONDITION AND TREAD WEAR

- Regularly inspect your Revo Sport's tires for signs of wear.
- Use a rubber conditioner on your Revo Sport's tire side walls to help to preserve them.



**WARNING! Do not apply rubber conditioner on tire tread; this may cause the tires to become dangerously slippery.**

### EXTERIOR SURFACES

- Bumpers and trim also benefit from an occasional application of rubber or vinyl conditioner.



**WARNING! Do not apply a rubber or vinyl conditioner on a scooter's vinyl seat; it will become dangerously slippery.**

### FLOORBOARD MATS

The Revo Sport's floorboard mats can be removed should they become damaged or worn to the point of replacement. The floorboard mats are held in place with clips that must be removed from the underside of the scooter's floorboards. Replacement mats can be purchased from your authorized Pride provider.

To remove the floorboard mats:

- Position the scooter so the clips are accessible.
- Place a drop of dish soap over the clips. Dish soap acts as a lubricant and aids in the removal of the clips.
- Pull the clips from their positions with a pair of pliers.



**WARNING! Do not apply a rubber conditioner to the floorboard mats; they will become dangerously slippery.**

### WIRING HARNESS

If you remove the battery/charger pack often, it is advised to:

- Regularly check the wiring harness insulation for wear or damage.
- Have your authorized Pride provider repair or replace any damaged connector, connection, or insulation that you find before using your scooter again.

### ABS PLASTIC SHROUD

- The Revo Sport shroud is made from durable ABS plastic and coated with an advanced formula urethane paint.
- A light application of car wax will help the shroud retain its high gloss.

## XII. CARE AND MAINTENANCE

### AXLE BEARINGS AND THE MOTOR/TRANSAXLE ASSEMBLY

- These items are all prelubricated, sealed, and require no subsequent lubrication.

### CONSOLE, CHARGER, AND ELECTRONICS

- Keep these areas free of moisture.
- If any of these items do become exposed to moisture, let them dry thoroughly before operating your scooter again.

### STORAGE

If you plan on not using your scooter for an extended period of time, it is best to:

- Fully charge its batteries prior to storage.
- Disconnect the wiring harness from the back of the battery/charger pack.
- Store your scooter in a warm, dry environment.
- Avoid storing your scooter where it will be exposed to temperature extremes.

For prolonged storage, you may wish to place several boards under the frame of your scooter to raise the scooter off of the ground. This takes the weight off the tires and reduces the possibility of flat spots developing on the areas of the tires contacting the ground.

### REAR LIGHTS

The light bulbs for the rear running lights are easily replaceable.

To replace a bulb:

- Remove the light cover which is held in place with Phillips head screws.
- Gently remove the bulb by pulling it straight up.
- Insert a new 24V, 5-watt bulb.
- Replace the light cover.

*NOTE: Replacement light bulbs can be purchased from your authorized Pride provider.*



**CAUTION! Do not use regular automotive-type 12-volt light bulbs; your scooter is equipped with a 24-volt electrical system.**

# XIII. WARRANTY

## THREE-YEAR LIMITED WARRANTY

Three years on all structural frame components; including platform, fork, seat post, and frame.

Three-year prorata drive train warranty; including transaxle, motor, and brake.

- First year: 100% replacement of parts cost
- Second year: 67% replacement of parts cost
- Third year: 50% replacement of parts cost

## THREE-YEAR WARRANTY EXCEPTIONS

**Transaxle:** In cases where there is an increase in the operational noise level, the warranty does not apply. (The increase in operational noise level usually occurs due to abusive and excessive strain on the Revo Sport.)

**Motor brake:** Three-year warranty for the electrical function of the motor brake. Brake pads are a wear item and are not warranted.

## ONE-YEAR LIMITED WARRANTY

For one (1) year from the date of purchase, Pride will repair or replace, at our option, to the original purchaser, free of charge, any part or electronic component found upon examination by an authorized representative of Pride to be defective in material and/or workmanship.

The battery is warranted by the battery manufacturer. The battery is not warranted by Pride.

Warranty service can be performed by a provider authorized by Pride or by Pride. Do not return faulty parts to Pride without prior consent. All transportation costs and shipping damage incurred while submitting parts for repair or replacement are the responsibility of the original purchaser.

## WARRANTY EXCLUSIONS

- ABS plastic shrouds and footrest covers (wear items and not warranted)
- Batteries (the battery manufacturer provides a six-month limited warranty)
- Tires and tire tubes (wear items and not warranted)
- Upholstery and seating (wear items and not warranted)
- Repairs and/or modifications made to any part of the Revo Sport without specific and prior consent from Pride
- Circumstances beyond the control of Pride
- Damage caused by:
  - Battery fluid spillage or leakage
  - Abuse, misuse, accident, or negligence
  - Improper operation, maintenance, or storage
  - Commercial use or use other than normal
- Labor, service calls, shipping, and other charges incurred for repair of the product

## **XIII. WARRANTY**

There is no other express warranty.

Implied warranties, including those of merchantability and fitness for a particular purpose, are limited to one (1) year from the date of original purchase and to the extent permitted by law. Any and all implied warranties are excluded. This is the exclusive remedy. Liabilities for consequential damages under any and all warranties are excluded.

Some states do not allow limitations on how long an implied warranty lasts or do not allow the exclusion of limitation of incidental or consequential damages. So, the above limitation or exclusion may not apply to you.