

# Dynamic DX SKYRIS

## Basic Operation Instructions

*Pride Mobility Products*

ACN# 088 609 661



# **QUANTUM**

---

# **REHAB**

LEAPING AHEAD WITH MORE ADVANCED REHAB PRODUCTS AND SERVICES

# PRODUCTS SAFETY LABELS

The symbols below are used throughout this manual and on the product to identify warnings, cautions, and notes. It is very important for you to read and understand the information that follows these symbols completely.



**NOTE:** Indicates important things to remember when using this product.

Using this product safely depends upon your diligence in following the warnings, cautions, notes, and instructions in this owner's manual. Safe operation also depends upon your own good judgement and/or common sense, as well as that of your provider, caregiver, and/or healthcare professional.



**NOTE:** Please read and follow all instructions in this manual before attempting to operate this product for the first time. If there is anything in this manual you do not understand, or if you require additional assistance for setup, contact your authorized Pride provider.



**NOTE:** Pride is not liable for damage to property or personal injury arising out of unsafe use of this product. Pride is also not liable for any property damage or personal injury arising out of the failure of any person and/or user to following the instructions and recommendations set forth in this manual or any other instructions or recommendations contained in other Pride related literature issued by Pride or contained on the product itself.



**NOTE:** We have compiled this manual from the latest specifications and product information available at the time of publication. We reserve the right to make changes, as they become necessary. Any changes to our products may cause slight variations between the illustrations and explanations in this manual and the product you have purchased.

# TABLE OF CONTENTS

<b>INTRODUCTION</b> .....	4
Dynamic DX Specialty Controls Infrared System (SKYRIS) .....	4
<b>SKYRIS CONTROLS</b> .....	6
<b>STANDARD MODE CONFIGURATION</b> .....	6
Driving in Standard Mode Configuration .....	6
<b>TIMEOUT FUNCTION</b> .....	7
<b>SEAT CONTROL</b> .....	8
Tilt Submode .....	8
Recline Submode .....	9
Left Leg Rest Submode .....	10
Right Leg Rest Submode .....	10
<b>INFRARED TRANSMITTER</b> .....	11

## INTRODUCTION

Welcome to Quantum Rehab, a Division of Pride Mobility Products Corporation. Quantum Rehab is dedicated to the customization of power chairs for users with advanced rehabilitation and mobility issues. Quantum Rehab also expands possibilities for enhanced healthcare attendant control over power chair functions to provide a secondary level of support for our customers where necessary.

This manual describes basic operation for the Dynamic DX Specialty Controls Infrared System (SKYRIS) only and must be read in conjunction with the owner's manual supplied with your power chair. Please read both manuals in their entirety before operating the SKYRIS or your power chair.

This manual is intended as a supplement to the in-service training provided by your authorized provider. If you have any questions or problems regarding the SKYRIS, please contact your authorized Pride provider.

### **Dynamic DX Specialty Controls infrared system (SKYRIS)**

The SKYRIS allows users to control a wide range of on-chair and off-chair functions. The SKYRIS is used in conjunction with input devices such as joysticks, touch pads, lap trays, head arrays, Buddy Buttons, Sip-N-Puff systems, etc. The purpose of the SKYRIS is to enhance and expand input device function, so that the user can do more with his/her power chair.

SKYRIS units come pre-programmed in the Standard Mode Configuration explained in this manual, which receive commands from a 4-quadrant input device, such as a joystick. The SKYRIS can be customized for other input devices. Please contact your authorized provider for more information on programming alternatives.

The following functions are available:

#### ■ SKYRIS Controls

Utilizes the On/Off Switch and the Mode Switch to power the SKYRIS and choose pre-programmed functions.

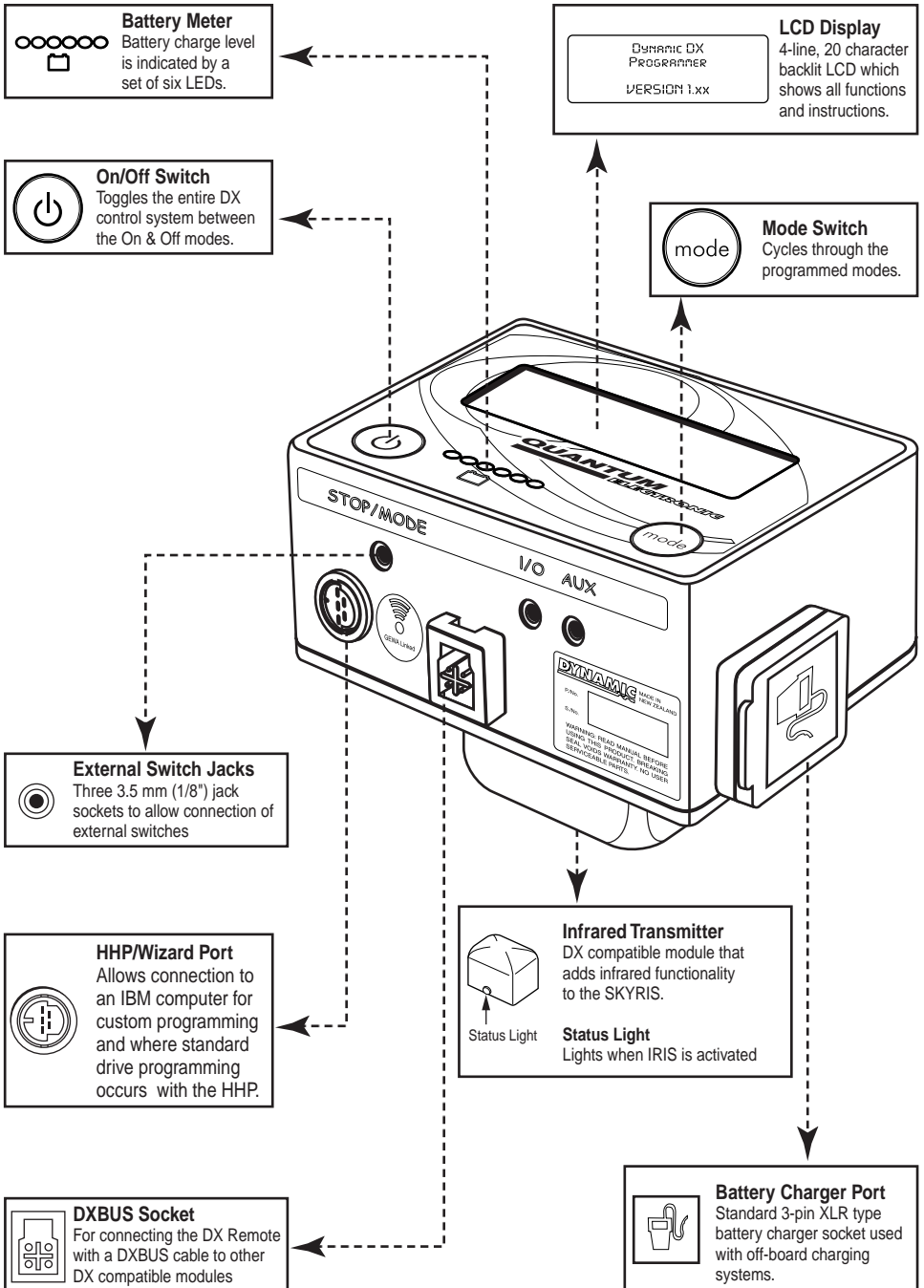


Figure 1. SKYRIS Components and Connections

■ Standard Mode Configuration

Allows the user to choose and control the driving speed of his/her power chair using one of five modes.

■ Timeout Function

This is a safety feature built in to the programming of the SKYRIS.

■ Seat Control

Allows the user to control seat actuator adjustment.

■ Infrared Transmitter

Allows the user to control infrared devices with the SKYRIS.

## SKYRIS CONTROLS

The SKYRIS has two built-in controls: the On/Off Switch and the Mode Switch (see figure 1). The On/Off Switch simply controls power to the SKYRIS. The Mode Switch cycles the SKYRIS through eight possible program modes. The input device is also used to cycle through the program modes, and only the input device can activate a function on the SKYRIS.

Only five of the eight possible program modes are used in the Standard Mode Configuration. All five program modes are Drive Modes (see *Standard Mode Configuration*).

## STANDARD MODE CONFIGURATION

Quantum Rehab's Standard Mode Configuration for the SKYRIS encompasses five drive programs, all of which control driving speed as a percentage of maximum speed. The slowest is Drive Mode 1; the fastest is Drive Mode 5. Actual maximum speed varies according to the power chair model.

## Driving in Standard Mode Configuration

Power up the SKYRIS using the On/Off Switch (either onboard or plugged into the external On/Off Switch jack).

The LCD Display will show Drive Mode 1 and prompt the user to select one of three functions (see figure 2):

1. Previous (down arrow)— Returns the SKYRIS to the previous state (in this case, powered down)
2. Yes (right arrow) — Selects Drive Program 1. The SKYRIS will stay in Drive Mode until the Timeout Function (see *Timeout Function*) activates.
3. Next (up arrow) — Selects the next mode (in this case, Drive Program 2). Pressing the Mode Switch accomplishes the same action.

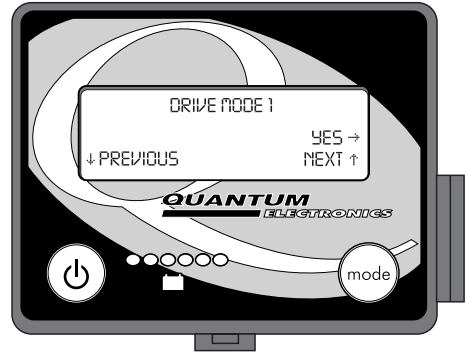


Figure 2. Drive Program Selection



**NOTE:** The arrows on the LCD screen indicate the direction command on your input device. The “up arrow” is the same as a forward command. The “down arrow” is the same as a reverse command. The “right arrow” is the same as a right turn command. The “left arrow” is the same as a left turn command.

Using the input device, select the drive program most appropriate to the current environment, e.g., indoor setting versus outdoor setting.

Choosing the “Next” command will cycle the SKYRIS through the drive programs. The LCD display will change with each option selection.

## TIMEOUT FUNCTION

The timeout function is a safety feature in the nature of an “automatic sleep” mode. After ten seconds of inactivity in Drive Mode, the SKYRIS automatically exits Drive Mode, returning to the mode selection screen.

## SEAT CONTROL MODE

Executing a “Next” command with the input device when in Drive Mode 5 moves the SKYRIS to the Seat Control Menu. See figure 3.

To enter the Seat Control Mode, select the “Yes” option. The SKYRIS will then display the first of a series of submodes designed to control the actuators available on the power chair. These actuator sub-modes can include: Tilt, Recline, Left Leg Rest, and Right Leg Rest.

### Tilt Submode

The Tilt Submode controls the actuator that adjusts the tilt angle of the seat. See figure 4.

The user is prompted to select one of four functions:

1. Down (up arrow) — Retracts the tilt actuator, which decreases the tilt angle.
2. Up (down arrow) — Extends the tilt actuator, which increases the tilt angle.
3. Exit (left arrow) — Returns the SKYRIS to the Seat Control Menu
4. Next (right arrow) — Moves the SKYRIS to the next actuator submode.

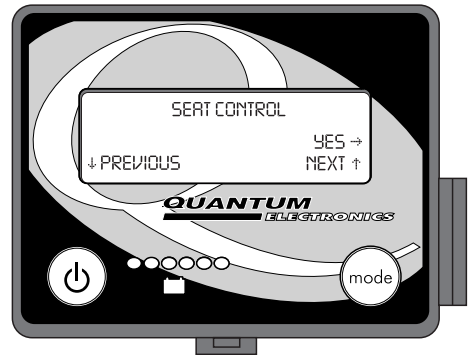


Figure 3. Seat Control Selection

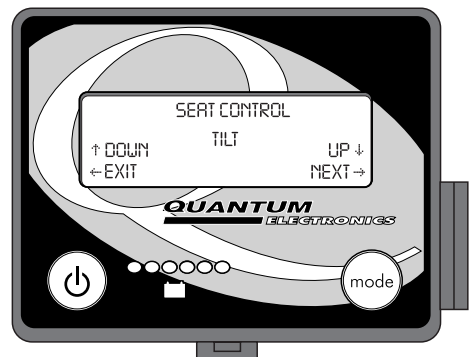


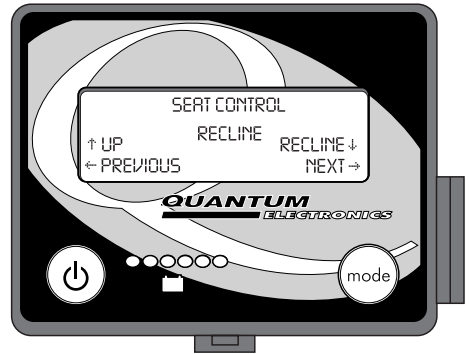
Figure 4. Tilt Submode Selection

## Recline Submode

The Recline Submode controls the actuator that adjusts the recline angle of the seat back. See figure 5.

The user is prompted to select one of four functions:

1. Up (up arrow) — Retracts the tilt actuator, which decreases the recline angle.
2. Recline (down arrow) — Extends the tilt actuator, which increases the recline angle.
3. Previous (left arrow) — Returns the SKYRIS to the previous actuator submode.
4. Next (right arrow) — Moves the SKYRIS to the next actuator submode.



**Figure 5. Recline Submode Selection**

## Left Leg Rest Submode

The Left Leg Rest Submode controls the actuator that raises or lowers the left leg rest. See figure 6.

The user is prompted to select one of four functions:

1. Down (up arrow) — Retracts the left leg rest actuator, which lowers the leg rest.
2. Up (down arrow) — Extends the left leg rest actuator, which raises the leg rest.
3. Previous (left arrow) — Returns the SKYRIS to the previous actuator option.
4. Next (right arrow) — Moves the SKYRIS to the next actuator submode.

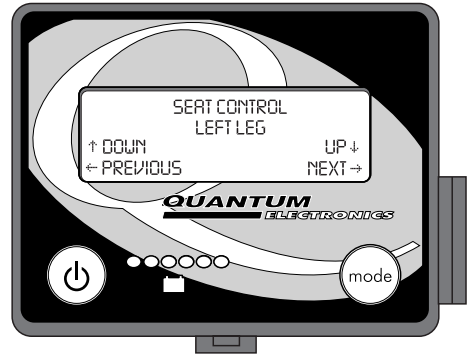


Figure 6. Left Leg Rest Mode Selection

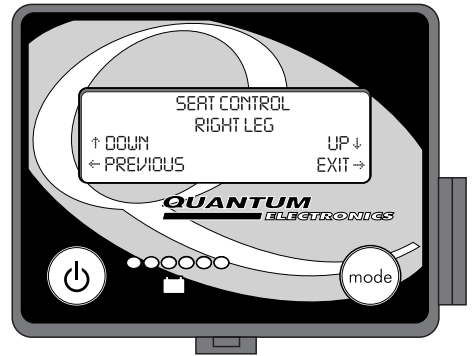


Figure 7. Right Leg Rest Mode Selection

## Right Leg Rest Submode

The Left Leg Rest Submode controls the actuator that raises or lowers the right leg rest. See figure 7.

The user is prompted to select one of four functions:

1. Down (up arrow) — Retracts the right leg rest actuator, which lowers the leg rest.
2. Up (down arrow) — Extends the right leg rest actuator, which raises the leg rest.

3. Previous (left arrow)— Returns the SKYRIS to the previous actuator option.
4. Exit (right arrow)— Returns the SKYRIS to the Seat Control Menu

## **INFRARED TRANSMITTER**

Connected to the SKYRIS is an infrared transmitter that makes it possible for the SKYRIS to control infrared devices.

The infrared transmitter can control a wide range of off-chair devices, including:

- Most household appliances normally controlled with hand-held infrared remote control (such as televisions, VCRs, DVD players, etc.).
- Most personal computers (via an infrared mouse controller).
- Most home automation devices that accept infrared commands.
- Various infrared devices manufactured by GEWA.

The infrared transmitter is controlled from the same input device that is used to drive your power chair. Programming the SKYRIS to take advantage of these functions can only be done by your authorized provider.

# **QUANTUM REHAB**

LEAPING AHEAD WITH MORE ADVANCED REHAB PRODUCTS AND SERVICES

[www.quantumrehab.com](http://www.quantumrehab.com)  
[www.pridemobility.com](http://www.pridemobility.com)

## **Pride Mobility Products Corporation**

182 Susquehanna Avenue  
Exeter, PA 18643  
USA

## **Pride Mobility Products Company**

380 Vansickle Road, Unit 350  
St. Catharines, Ontario L2R 6P7  
Canada

## **Pride Mobility Products Ltd.**

Unit 106, Heyford Park Camp Road  
Upper Heyford, Oxfordshire OX25 5HA

## **Pride Mobility Products Australia Pty. Ltd.**

21 Healey Road  
Dandenong, 3175  
Victoria, Australia

## **Pride Mobility Products Italia s.r.l.**

Via della Tecnica, 14  
Prato della Corte  
00065 Fiano Romano  
Roma - Italia

## **Pride Mobility Products Europe B.V.**

Tijmuiden 28  
1046 AL Amsterdam  
The Netherlands

# **Pride**